



MID-ATLANTIC CATTLE SALES

*A family owned and operated livestock video auction
with 30+ years of livestock marketing experience.*

MAY 19, 2026
TUESDAY AT 1:00 PM EST

WWW.MACSVIDEO.COM



Mid-Atlantic Cattle Sales, LLC
28978 Misenheimer Rd. Richfield, NC 28137
704-322-0840 • 704-322-9770
info@macsvideo.com

DVAuction
Broadcasting Real-Time Auctions

Video Sale INFORMATION

The cattle offered for sale are indicated on the following sale sheets and the online sale description as described to the MACS representatives by the owner. They are described by lot numbers, seller, location of cattle, numbers of head, estimated weight, management practices, delivery date, conditions of sale and delivery, and verified programs. Representatives for each load are listed under each respective lot. Every effort has been made to assure the correctness of this information but all announcements from the auctioneer or official auction staff prior to or during the sale shall take precedence over printed matter herein.

SALE DATE & TIME:

Tuesday - May 19, 2026

1:00 pm est. | 12:00 pm cst.

CONTACT:

Marcus Harward704-322-0840

Brooke Harward704-322-9770

www.MACSvideo.com

View catalog, videos, and additional updates online.

www.vimeo.com/macsvideo

All videos of sale cattle are posted directly on our video page listed above and on DV Auction

***MACS Sale Terms and Conditions are listed in this catalog and online. All loads will sell under these terms and conditions.**

Bidding Options

We want to offer you the best opportunities we can to participate in our sales each month.
Below are three options for bidding on the sale.

1. CONFERENCE CALL

After 12:45 eastern on sale day, you can call the auction number to listen and bid on the sale. To bid during the sale, you will use your buyer number to bid on the lot. Contact Marcus or Brooke prior to the sale to receive a buyer's number. *Please keep background noise to a minimum as we will have multiple people on the line. To mute your phone, press *1. To un-mute, press *1 again.*

CALL-IN NUMBER: 1-866-906-9888

PASSCODE: 9461720 #



2. DV AUCTION - INTERNET VIEWING AND BIDDING

To view the sale or bid online, visit www.DVAuction.com. Find the "Mid-Atlantic Cattle Sales (Richfield, NC)" sale and click on "Details." From this page you can view the catalog, videos, or log in to watch the sale. If you have an account, log in and view the sale. If you do not, you must create an account under the "Create New Account" tab in the upper left hand corner of the screen. You will need to confirm this account through your e-mail. *It is best to do this at least a day before the sale.*

You DO NOT have to be approved just to watch the sale but you will still need to create an account with DVAuction. To register for a buyer's number, call Brooke at 704-322-9770 prior to the sale to be approved to bid online.

3. ABSENTEE BIDDING

For people who can not view or bid on the sale at sale time, we have can handle closed bids in house and assist you with absentee bidding. Contact Marcus at 704-322-0840 for more information.

"For God so loved the world, that he gave his only Son, that whoever believes in him should not perish but have eternal life. For God did not send his Son into the world to condemn the world, but in order that the world might be saved through him."

JOHN 3:16-17



LOT SUMMARY

TUESDAY, MAY 19, 2026

Video Sale Information	Pg 2
Table of Contents / Lot Summary	Pg 3

LOT NUMBER	LOAD NUMBER	TYPE	BASE WT.	PRODUCER	STATE	DELIVERY	PAGE NUMBER
Lot 6165	1 Load	Steers	650 lbs.	Hannah Cattle Company	NC	June 1-5	Pg 4
Lot 6166	1 Load	Steers	660 lbs.	Johnson & Owens Farm	NC	May 25-29	Pg 4
Lot 6167	1 Load	Steers	745 lbs.	Johnson & Owens Farm	NC	May 25-29	Pg 5
Lot 6168	2 Loads	Steers	840 lbs.	Donald Chriscoe Farm *	NC	May 22-29	Pg 5
Lot 6169	2 Loads	Steers	850 lbs.	Talley Farms Inc * ^{GAP}	NC	May 20-29	Pg 6
Lot 6170	1 Load	Heifers	685 lbs.	Johnson & Owens Farm	NC	May 25-29	Pg 6
Lot 6171	1 Load	Heifers	690 lbs.	Holt Farms	NC	May 25-29	Pg 7
Lot 6172	2 Loads	Heifers	770 lbs.	Donald Chriscoe Farm *	NC	May 22-29	Pg 7
Lot 6173	1 Load	Heifers	775 lbs.	Johnson & Owens Farm	NC	May 25-29	Pg 8
Lot 6174	.75 Load	21 Strs 35 Hfrs	660 lbs. 625 lbs.	Johnny Slade *	NC	May 21-28	Pg 8
Lot 6175	1 Load	51 Strs 31 Hfrs	705 lbs. 700 lbs.	Solid Ground Farm *	GA	June 4-5	Pg 9

May Cow Sale - May 30, 2026 - Norwood, NC	Pg 10
Upcoming Video Sale Dates	Pg 11
DV Auction Information	Pg 12
MACS Sale Terms & Conditions	Pgs 13-14

* = Affidavit Natural ^{GAP} = GAP Certified ^{VNB} = Verified Natural
^{NHTC} = Non-Hormone Treated ^{CARE} = BeefCARE Certified ^{ANGUS} = AngusVerified Sires



Lot 6165 1 Load of STEERS

Price: \$ _____ Buyer # _____

Hannah Cattle Company (Matt Hannah)
N Wilkesboro, NC - 25 miles northwest of Statesville, NC

Backgrounded, Weaned, BQA Certified



Base Wt: 650 lbs. Wt Stop: 675 lbs. (25#) Variance: 150 lbs.

Pickup Date: June 1-5 **Estimated Head Count** 75

Slide/Shrink: 2% shrink and slide \$17/cwt topside only

Weigh: Hauled 10 miles, weighed on certified truck scales

Notice to load: 48 hours **Weaned:** 90+ days

Colors: 74 hd blk/bwf, 2 hd ch-x, 1 hd red

Flesh: Medium

Muscling: 95% #1, 5% #1.5

Frame: Medium

Nutrition: Bunk fed 6# of commodity pellets with free choice mineral, pasture, and hay.

Vaccinations: Vista Once (1x), Vista 5 (1x), Nasalgen 3 (1x), Cavalry 9 (2x)

Dewormer: Safeguard (1x), Cydectin (1x) **Implants:** Revalor (1x)

Genetics: Commercial Angus-based.

Programs: No

Comments: Broke to bunks and waters. A very good set of steers that were put together from local producers and sale barns, triple vaccinated, and backgrounded on pasture being fed commodity pellets as well. A very good set of reputational steers ready to go to grass or feed.

MACS Rep: Jimmy Dagenhart, 704-425-3587

Programs:



Lot 6166 1 Load of STEERS

Price: \$ _____ Buyer # _____

Johnson & Owens Farm
Snow Camp, NC - 20 miles southeast of Greensboro, NC

Backgrounded, Weaned



Base Wt: 660 lbs. Wt Stop: 695 lbs. (35#) Variance: 90 lbs.

Pickup Date: May 25-29 **Estimated Head Count** 73

Slide/Shrink: 2% shrink and slide \$17/cwt topside only

Weigh: Hauled 5 miles, 2 loads sorted, & weighed on certified MACS ground scales

Notice to load: 48 hours **Weaned:** 90+ days

Colors: 92% blk/bwf, 1 hd ch-x, 5 hd red

Flesh: Medium

Muscling: 95% #1, 5% #1.5

Frame: Medium

Nutrition: Bunk fed 2% of body weight per day of corn and commodity blend feed with free choice mineral, pasture, and hay.

Vaccinations: Vista Once (3x), NasalGen 3 PMH (1x), Ultrabac 7 (2x), Pinkeye (2x)

Dewormer: Safeguard, Ivomec Pour-On & Inject. **Implants:** Revalor (1x)

Genetics: Commercial Angus-based/crossbred.

Programs: No

Comments: Broke to bunks and waters. A very good group of background steers that were purchased as 3 & 4 weights from local sale barns, triple vaccinated, and backgrounded on pasture. There are 2+ loads that have been running together and were individually weighed to sort two good loads. Need to load BOTH steer loads the same day, will be brought in on load out day, sorted, then weighed. 3 head with a white spot in their eye.

MACS Rep: Marcus Harward, 704-322-0840

Programs:



Lot 6167 1 Load of STEERS

Price: \$ _____ Buyer # _____

Johnson & Owens Farm
Snow Camp, NC - 20 miles southeast of Greensboro, NC

Backgrounded, Weaned



Base Wt: 745 lbs. Wt Stop: 780 lbs. (35#) Variance: 150 lbs.

Pickup Date: May 25-29 **Estimated Head Count** 65

Slide/Shrink: 2% shrink and slide \$15/cwt topside only

Weigh: Hauled 5 miles, 2 loads sorted, & weighed on certified MACS ground scales

Notice to load: 48 hours **Weaned:** 90+ days

Colors: 86% blk/bwf, 1 hd ch-x, 8 hd red

Flesh: Medium

Muscling: 95% #1, 5% #1.5

Frame: Medium

Nutrition: Bunk fed 2% of body weight per day of corn and commodity blend feed with free choice mineral, pasture, and hay.

Vaccinations: Vista Once (3x), NasalGen 3 PMH (1x), Ultrabac 7 (2x), Pinkeye (2x)

Dewormer: Safeguard, Ivomec Pour-On & Inject. **Implants:** Revalor (1x)

Genetics: Commercial Angus-based/crossbred.

Programs: No

Comments: Broke to bunks and waters. A very good group of background steers that were purchased as 3 & 4 weights from local sale barns, triple vaccinated, and backgrounded on pasture. There are 2+ loads that have been running together and were individually weighed to sort two good loads. Need to load BOTH steer loads the same day, will be brought in on load out day, sorted, then weighed. 2 head with a white spot in their eye.

MACS Rep: Marcus Harward, 704-322-0840

Programs:



Lot 6168 2 Loads of STEERS

Price: \$ _____ Buyer # _____

Donald Chriscoe Farm
Asheboro, NC - 40 miles south of Greensboro, NC

Affidavit Natural, Backgrounded, Weaned



Base Wt: 840 lbs. Wt Stop: 865 lbs. (25#) Variance: 175 lbs.

Pickup Date: May 22-29 **Estimated Head Count** 115

Slide/Shrink: 2% shrink and slide \$15/cwt topside only

Weigh: Certified ground scales at farm

Notice to load: 48 hours **Weaned:** 120+ days

Colors: 109 hd (95%) blk/bwf, 3 hd ch-x, 3 hd red/rwf

Flesh: Medium

Muscling: 95% #1, 5% #1.5

Frame: Medium

Nutrition: Bunk fed haylage and TMR (wet corn gluten, cotton) with access to mineral and hay.

Vaccinations: Vista 5 (2x), Nuplura (1x), Vision 7 20/20 (1x), Ocuguard Pinkeye (1x)

Dewormer: Ivomec Inject. (2x) **Implants:** None

Genetics: Commercial Angus-based. Mainly sired by Angus and SimAngus bulls.

Programs: Seller Affidavit Natural

Comments: Broke to bunks and waters. Reputational calves purchased from local producers and backgrounded at Chriscoe's for well over 100 days. Owner affidavit natural - signed natural affidavits from original producers that will transfer with the cattle. Selling two loads as one lot.

MACS Rep: Marcus Harward, 704-322-0840

Programs:



Lot 6169 2 Loads of STEERS

Price: \$ _____ Buyer # _____

Talley Farms Inc
Stanfield, NC - 15 miles east of Charlotte, NC

Home-Raised, GAP-4, Natural, Backgrounded, Weaned, BQA Certified



Base Wt: 850 lbs. Wt Stop: 875 lbs. (25#) Variance: 200 lbs.

Pickup Date: May 20-29 **Estimated Head Count** 112

Slide/Shrink: 2% shrink and slide \$15/cwt topside only

Weigh: Certified ground scales at farm

Notice to load: 48 hours **Weaned:** 100+ days

Colors: 106 hd blk/bwf, 6 hd red/rwf, (1 w/ 6" horns)

Flesh: Medium

Muscling: 95% #1, 5% #1.5

Frame: Medium

Nutrition: Bunk fed a silage-based high roughage TMR with free choice mineral.

Vaccinations: Vista Once (1x), Vista 5 (1x), Vision 7 Somnus (2x)

Dewormer: Safeguard (1x), Ivermec (1x) **Implants:** None

Genetics: 50% or more Angus. Sired by Stabilizer Angus & SimAngus bulls and out of Angus & Stabilizer cows.

Programs: GAP-4; Seller Affidavit Natural

Comments: Broke to bunks and waters. A very good set of high-quality, high-performing genetics from a reputational program with black Angus and Stabilizer genetics from Leachman Cattle. Might be a couple with blue eyes and there is 1 red baldy with 6" horns. GAP certificate can transfer at no cost to buyer (GAP#27451, Exp 3/1/27). Also willing to sign natural affidavits if needed.

MACS Rep: Bruce Shankle, 704-694-8686

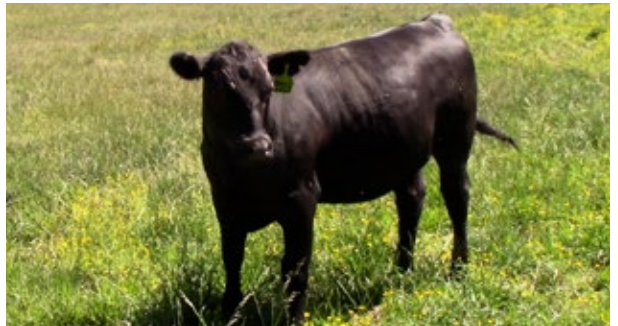
Programs:     

Lot 6170 1 Load of HEIFERS

Price: \$ _____ Buyer # _____

Johnson & Owens Farm
Snow Camp, NC - 20 miles southeast of Greensboro, NC

Backgrounded, Weaned



Base Wt: 685 lbs. Wt Stop: 720 lbs. (35#) Variance: 70 lbs.

Pickup Date: May 25-29 **Estimated Head Count** 71

Slide/Shrink: 2% shrink and slide \$17/cwt topside only

Weigh: Hauled 5 miles, 2 loads sorted, & weighed on certified MACS ground scales

Notice to load: 48 hours **Weaned:** 90+ days

Colors: 76% blk/bwf, 7 hd ch-x, 10 hd red

Flesh: Medium

Muscling: 95% #1, 5% #1.5

Frame: Medium

Nutrition: Bunk fed 2% of body weight per day of corn and commodity blend feed with free choice mineral, pasture, and hay.

Vaccinations: Vista Once (3x), NasalGen 3 PMH (1x), Ultrabac 7 (2x), Pinkeye (2x), Estrumate (2x)

Dewormer: Safeguard, Ivomec Pour-On & Inject. **Implants:** Revalor (1x)

Genetics: Commercial Angus-based/crossbred.

Programs: No

Heifers: Open, not palpated, given 2 rounds of Estrumate.

Comments: Broke to bunks and waters. A very good group of background heifers that were purchased as 4 weights from local sale barns, triple vaccinated, and backgrounded on pasture. 2+ loads of heifers have all been comingled and running together. Heifers were individually weighed and should be very close on weights. 2 head with a white spot in their eye. **Can not load on same day as 2 steer loads selling earlier in the sale. Must load on same day as other heifer load.

MACS Rep: Marcus Harward, 704-322-0840

Programs:   

Lot 6171 1 Load of HEIFERS

Price: \$ _____ Buyer # _____

Holt Farms
Snow Camp, NC - 20 miles southeast of Greensboro, NC

Backgrounded, Weaned



Base Wt: 690 lbs. Wt Stop: 715 lbs. (25#) Variance: 200 lbs.

Pickup Date: May 25-29 **Estimated Head Count** 70
Slide/Shrink: 2% shrink and slide \$15/cwt topside only
Weigh: Hauled 5 miles, weighed on certified ground scales
Notice to load: 48 hours **Weaned:** 90+ days
Colors: 96% blk/bwf, 2 hd ch-x, 1 hd red
Muscling: 90% #1, 10% #1.5
Nutrition: Bunk fed a little grain in bunks with free choice mineral, pasture, and hay.
Vaccinations: Bovi-Shield Gold One Shot (1x), Bovi-Shield Gold 5 (1x), Ultrabac 7 (2x), Pinkeye (1x)
Dewormer: Ivomec Inject. **Implants:** None
Genetics: Commercial Angus-based.
Programs: No
Heifers: Open, not palpated.
Comments: Broke to bunks and waters. Purchased as 4 weights from local sale barns and backgrounded on pasture. 2-3 may have a spot in their eye. A fancy set of heifers that are ready to go to grass or feed.
MACS Rep: Marcus Harward, 704-322-0840

Flesh: Medium & Med/Light
Frame: Medium

Programs:



Lot 6172 2 Loads of HEIFERS

Price: \$ _____ Buyer # _____

Donald Chriscoe Farm
Asheboro, NC - 40 miles south of Greensboro, NC

Affidavit Natural, Backgrounded, Weaned



Base Wt: 770 lbs. Wt Stop: 795 lbs. (25#) Variance: 175 lbs.

Pickup Date: May 22-29 **Estimated Head Count** 126
Slide/Shrink: 2% shrink and slide \$15/cwt topside only
Weigh: Certified ground scales at farm
Notice to load: 48 hours **Weaned:** 120+ days
Colors: 123 hd (98%) blk/bwf, 1 hd ch-x, 2 hd red
Muscling: 95% #1, 5% #1.5
Nutrition: Bunk fed haylage and TMR (wet corn gluten, cotton) with access to mineral and hay.
Vaccinations: Vista 5 (2x), Nuplura (1x), Vision 7 20/20 (1x), Ocuguard Pinkeye (1x)
Dewormer: Ivomec Inject. (2x) **Implants:** None
Genetics: Commercial Angus-based. Mainly sired by Angus and SimAngus bulls.
Programs: Seller Affidavit Natural
Heifers: Palpated, guaranteed open
Comments: Broke to bunks and waters. Reputational calves purchased from local producers and backgrounded at Chriscoe's for well over 100 days. Owner affidavit natural - signed natural affidavits from original producers that will transfer with the cattle. Selling two loads as one lot.
MACS Rep: Marcus Harward, 704-322-0840

Flesh: Medium
Frame: Medium

Programs:



Lot 6173 1 Load of HEIFERS

Price: \$ _____ Buyer # _____

Johnson & Owens Farm
Snow Camp, NC - 20 miles southeast of Greensboro, NC

Backgrounded, Weaned



Base Wt: 775 lbs. Wt Stop: 810 lbs. (35#) Variance: 150 lbs.

Pickup Date: May 25-29 **Estimated Head Count** 63

Slide/Shrink: 2% shrink and slide \$15/cwt topside only

Weigh: Hauled 5 miles, 2 loads sorted, & weighed on certified MACS ground scales

Notice to load: 48 hours **Weaned:** 90+ days

Colors: 78% blk/bwf, 2 hd ch-x, 13 hd red

Flesh: Medium

Muscling: 95% #1, 5% #1.5

Frame: Medium

Nutrition: Bunk fed 2% of body weight per day of corn and commodity blend feed with free choice mineral, pasture, and hay.

Vaccinations: Vista Once (3x), NasalGen 3 PMH (1x), Ultrabac 7 (2x), Pinkeye (2x), Estrumate (2x)

Dewormer: Safeguard, Ivomec Pour-On & Inject. **Implants:** Revalor (1x)

Genetics: Commercial Angus-based/crossbred.

Programs: No

Heifers: Open, not palpated, given 2 rounds of Estrumate.

Comments: Broke to bunks and waters. A very good group of background heifers that were purchased as 4 weights from local sale barns, triple vaccinated, and backgrounded on pasture. 2+ loads of heifers have all been comingled and running together. Heifers were individually weighed and should be very close on weights. 2 head with a white spot in their eye. **Can not load on same day as 2 steer loads selling earlier in the sale. Must load on same day as other heifer load.

MACS Rep: Marcus Harward, 704-322-0840

Programs:



Lot 6174 0.75 Load of STRS/HFRS

Price: \$ _____ Buyer # _____

Johnny Slade (formerly Jane Iseley Farms)
Burlington, NC - 20 miles east of Greensboro, NC

Home-Raised, Affidavit Natural, Backgrounded, Weaned



~21 Steers Wt: 660 lbs. Wt. Stop: 685 lbs. (25#) Variance: 300 lbs.

~35 Hfrs Wt: 625 lbs. Wt. Stop: 650 lbs. (25#) Variance: 300 lbs.
Heifers sell \$20/cwt back

Pickup Date: May 21-28

Slide/Shrink: 2% shrink and slide \$18/cwt topside only

Weigh: Hauled 20 miles to sorting barn, unloaded, sorted, weighed on certified ground scales

Notice: 48-72 hours **Weaned:** 45+ days

Colors: 55 hd blk/bwf, 1 hd ch-x

Flesh: Medium

Muscling: 95% #1, 5% #1.5

Frame: Medium

Nutrition: 14% feed in self feeders (limit fed) with free choice mineral, pasture, and hay

Vaccinations: Bovi-Shield Gold One Shot (1x), Bovi-Shield Gold 5 (1x), Cavalry 9 (1x), Ultrabac 7 Somubac (1x)

Dewormer: Dectomax Inject (1x) **Implants:** None

Genetics: 50-75% Angus, 25-50% Simmental. Sired by Angus and SimAngus bulls out of Angus-based or SimAngus cows. Average Yearling Weight in the top 5%, average marbling in the top 20%, average \$Beef in the top 15%. Angus sires from Smith Angus Farm and SimAngus sires from Cow Camp Ranch, SimAngus Solution, and Fred Smith Company Ranch.

Programs: Seller Affidavit Natural

Preg-checked: Open, not palpated.

Comments: Broke to bunks and waters. All calves born last fall and weaned for 45+ days. Will grow and make a good, big set of finished steers and heifers. These are the former Jane Iseley Farms good reputation cattle that Johnny Slade took over after her passing. Producer will sign buyer's natural affidavit if needed.

MACS Rep: Marcus Harward, 704-322-0840

Programs:



Lot 6175 1 Load of STRS/HFRS

Price: \$ _____ Buyer # _____

Solid Ground Farm (Kirk Little)
Lyons, GA - 45 miles southwest of Statesboro, GA

Home-Raised, Affidavit Natural, Backgrounded, Weaned

~51 Steers Wt: 705 lbs. Wt. Stop: 740 lbs. (35#) Variance: 175 lbs.
~31 Hfrs Wt: 700 lbs. Wt. Stop: 735 lbs. (35#) Variance: 175 lbs.
Heifers sell \$15/cwt back



Pickup Date: June 4-5
Slide/Shrink: 2% shrink and slide \$15/cwt topside only
Weigh: Hauled 5 miles, weighed on certified truck scales
Notice: 72 hours **Weaned:** 45+ days
Colors: 100% blk/bwf (1-2 hd with 2-3" horns)
Muscling: 90% #1, 10% #1.5
Nutrition: Bunk fed 12# of 13.5% Godfrey feed with free choice Godfrey mineral, pasture, and hay.
Vaccinations: Pyramid 5 Presponse (2x), Cavalry 9 (2x), Autogenous pinkeye (1x) (Jan 10 & April 18)
Dewormer: LongRange, Ivermectin **Implants:** None
Genetics: 80% or more Angus. Sired by Gardiner Angus bulls and similar genetics and out of Angus based cows.
Programs: Seller Affidavit Natural
Preg-checked: Open, not palpated.
Comments: Broke to bunks and waters. A very good set of calves, double vaccinated in January and April, and weaned April 15th. Calves are out of Gardiner genetics and are over 75% Angus. Calves meet natural certifications and will sign buyer natural affidavits.
MACS Rep: Romaine Cartee, 912-531-0580

Flesh: Medium-Light
Frame: Medium

Programs:    





NEW DATE!

**MAY
FEMALE
SALE**

**SATURDAY, MAY 30TH
12:00 NOON**

SELLING 200+ FEMALES

- 100 FALL BRED HEIFERS
- 85 FALL BRED COWS
- 25 HEAVY BRED COWS & PAIRS

**STANLY COUNTY LIVESTOCK MARKET
NORWOOD, NC**

MID-ATLANTIC CATTLE SALES

WWW.MACSVIDEO.COM



UPCOMING SALES

June 2

June 16

July 7

July 21

August 4

August 18

September 1

September 15

Our motto - Working hard for you today and every day!



To view the sale or bid online, visit www.DVAuction.com. Find the "Mid-Atlantic Cattle Sales (Richfield, NC)" sale and click on "Details." From this page you can view the catalog, videos, or log in to watch the sale. If you have an account, log in and view the sale. If you do not, you must create an account under the "Create New Account" tab in the upper left hand corner of the screen. You will need to confirm this account through your e-mail.

You DO NOT have to be approved for a buyer's number just to watch the sale but you will still need to create an account with DVAuction.



Mid-Atlantic Cattle Sales, LLC
28978 Misenheimer Rd. Richfield, NC 28137
info@macsvideo.com • www.MACSVideo.com

**Bonded through USDA Packers & Stockyards*

SALE TERMS AND CONDITIONS - PAGE 1 OF 2

MID-ATLANTIC CATTLE SALES, LLC

1. Each bidder must be pre-registered and have a Buyer Number to participate in the auction. To register for the auction call 704-322-9770, 704-322-0840, or register through DV Auction. By participating in the auction, the Buyer expressly agrees to adhere to these Terms and Conditions and to the provisions set forth in the Livestock Purchase Agreement sent after the auction. All cattle being offered for sale are under standard Contracts for Sale. All cattle are purchased under standard Contracts for Purchase by the Buyers.
2. The cattle offered for sale are indicated on the sale sheets or online sale description as described to the MACS representatives by the owner. They are described by lot numbers, seller, location of the cattle, numbers of head, estimated weight, management practices, delivery date, conditions of sale and delivery, and verified programs. Representatives for each load are listed under each respective lot. Every effort has been made to assure the correctness of this information but all announcements from the auctioneer or official auction staff prior to or during the sale shall take precedence over printed matter herein.
3. Auction bids will be taken as voice bids by telephone and in person or online bids through DV Auction. Bids are asked with each lot of cattle and will be sold to the highest bidder on the basis of estimated weight. Seller reserves the right to "no sale" the load lot(s) of their cattle at the time the highest bid is made as long as the "no sale" announcement is made prior to the next lot being sold. Any departure from this procedure will be announced and all announcements made from the auctioneer or official auction staff will take precedence over printed matter herein.
4. The Auctioneer reserves the right to reject any and all bids. Auctioneer will settle all disputed bids. If a dispute arises between two or more bidders, the Auctioneer may immediately put the lot up for sale again and resell to the highest bidder. The decision of the Auctioneer shall be final and absolute.
5. One full load of stocker or feeder cattle will be contracted for approximately 48,000 lbs. and the respective head count at the base weight at the full truckload weight. No freight adjustment will be given if the average weight at delivery is under the base weight and the head count delivered is within 95% of the contracted head count. Mid-Atlantic Cattle Sales and its representatives will act as agents only in the sale of lots of cattle. As the marketing agency we cannot guarantee a minimum or maximum amount of shrink on any load. Any weight guarantees in regard to shrink must be given by Seller. Mid-Atlantic Cattle Sales cannot guarantee off truck weights.
6. Cattle that are picked up after the stated delivery dates will be subject to a 2# per head per day increase on the base weight and any weight stops for each day late after the last stated delivery date. Any deviation from this 2# per head per day will be posted in the catalog and announced on sale day.
7. Most loads have weight stops at 25-50 lbs. over the base weight. The individual weight stops are posted on each lot. If a weight stop is listed, cattle will slide after shrink up to the posted weight stop and be sold on a total net weight at the posted weight stop. Any pounds after shrink over the weight stop will not be billed to the buyer or paid to the seller unless other arrangements have been made in writing.
8. All cattle will be sold on a sliding scale as listed on each load. The "price slide" will go into effect when the average net weight of the live cattle is over the base weight the cattle are sold at. This will go into effect starting at 1 pound over the base weight.
Slide Example: The cattle were sold at a base weight of 700 lbs with a \$5/cwt topside slide for \$150/cwt and at delivery weighed 725 lbs after shrink. The cattle would slide \$1.25 for a new price of \$148.75 at 725 lbs.
[Slide (\$5/cwt) X Pounds Over (25) = \$1.25/cwt] Also can be shown as [$\$5 / 100 \times 25 = \1.25]
9. On split loads the heifer price will be \$___/cwt (as stated in the lot information) back of the original price of the steers. The steers will be based at their purchase price and base weight and the heifers will be based at their purchase price and base weight. At delivery, slides and weight stops will be calculated separately on each group.

SALE TERMS AND CONDITIONS - PAGE 2 OF 2

MID-ATLANTIC CATTLE SALES, LLC

- 10.** The Buyer is responsible for all arrangements and regulatory requirements with respect to the transportation of the livestock and the Buyer is responsible for sending trucks to adequately load the number of head and/or the total weight contracted in order to legally transport them to their final destination. Cattle sold will be sorted and delivered to the stated weigh point by the Seller and weighed on a certified scale. Buyer will receive the cattle at point of weighing under conditions as stated with respect to each lot. Buyer will take ownership of the cattle at the point of loading.
- 11.** Health entry requirements for the state of entry are the responsibility of the Buyer. The Seller will furnish any health certificates required for the state of origin and Federal Law at the request of the buyer. If additional health certificates, documentation or tests are required for shipment to the Buyer's destination, it shall be at the Buyer's request and expense.
- 12.** Any heifer that is sold as guaranteed open and is determined to be bred by the buyer will receive a \$200 per bred heifer refund given appropriate documentation is provided within 90 days (updated) of the cattle being delivered. Documentation must include lot information, heifer identification, and veterinarian documentation. **UPDATE: Effective July 1, 2024 all heifer loads, unless explicitly stated in the catalog, are sold with a 90-day bred heifer refund guarantee. The catalog will explicitly state if heifers have been checked for pregnancy prior to delivery so that the buyer can plan accordingly.**
- 13.** Payment by Buyer is due and payable in accordance with USDA P&S prompt pay policy upon delivery of the cattle and at such times as the value of the cattle is determined based on weight (subject to condition), price (subject to condition), and any other conditions stated at time of sale. Payment must be sent to Mid-Atlantic Cattle Sales within 1 day after the cattle are received by the Buyer. We request that all payments be sent by Wire Transfer, ACH, or overnight delivery of a check via FedEx or UPS. Payment sent via the U.S. Postal Service (1st Class or Priority Mail) are expected to be received within 7 business days of delivery. Any fees incurred for sending payment will be at the Buyer's expense.
- 14.** Mid-Atlantic Cattle Sales does not warrant the harvest date on source and age verified cattle and cannot guarantee back verification on any program requiring signed affidavits or 3rd party verification. Mid-Atlantic Cattle Sales will make all efforts to ensure verifications are met, but it is the Buyer's responsibility to verify all claims of the Seller to fit specific programs prior to purchase.
- 15.** There are no implied warranties of merchantability or fitness for a particular purpose on any livestock sold. Seller does not warrant that the livestock are free from any latent defect, condition, sickness, or disease. Seller does not assume responsibility for any loss after the livestock are delivered, which results from any latent defect, condition, sickness, or disease.



Marcus Harward: 704-322-0840
Brooke Harward: 704-322-9770

info@macsvideo.com
www.MACsvideo.com

28978 Misenheimer Rd • Richfield, NC 28137