

MID-ATLANTIC CATTLE SALES

*A family owned and operated livestock video auction
with 30+ years of livestock marketing experience.*

DECEMBER 6, 2022

TUESDAY AT 1:00 PM EST

WWW.MACSVIDEO.COM



Mid-Atlantic Cattle Sales, LLC
28978 Misenheimer Rd. Richfield, NC 28137
704-322-0840 • 704-322-9770
info@macsvideo.com

DVAuction
Broadcasting Real-Time Auctions

Video Sale INFORMATION

The cattle offered for sale are indicated on the following sale sheets and the online sale description as described to the MACS representatives by the owner. They are described by lot numbers, seller, location of cattle, numbers of head, estimated weight, management practices, delivery date, conditions of sale and delivery, and verified programs. Representatives for each load are listed under each respective lot. Every effort has been made to assure the correctness of this information but all announcements from the auctioneer or official auction staff prior to or during the sale shall take precedence over printed matter herein.

SALE DATE & TIME:

Tuesday - December 6, 2022

1:00 pm est. | 12:00 pm cst.

CONTACT:

Marcus Harward704-322-0840

Brooke Harward704-322-9770

Jeff Martin910-379-9173

www.MACSvideo.com

View catalog, videos, and additional updates online.

www.vimeo.com/macsvideo

All videos of sale cattle are posted directly on our video page listed above and on DV Auction

***MACS Sale Terms and Conditions are listed in this catalog and online. All loads will sell under these terms and conditions.**

Bidding Options

*We want to offer you the best opportunities we can to participate in our sales each month.
Below are three options for bidding on the sale.*

1. CONFERENCE CALL

After 12:45 eastern on sale day, you can call the auction number to listen and bid on the sale. To bid during the sale, you will use your buyer number to bid on the lot. Contact Marcus or Brooke prior to the sale to receive a buyer's number. *Please keep background noise to a minimum as we will have multiple people on the line. To mute your phone, press *6. To un-mute, press *6 again.*

CALL-IN NUMBER: 1-866-906-9888

PASSCODE: 9461720 #

2. DV AUCTION - INTERNET VIEWING AND BIDDING



To view the sale or bid online, visit www.DVAuction.com. Find the "Mid-Atlantic Cattle Sales (Richfield, NC)" sale and click on "Details." From this page you can view the catalog, videos, or log in to watch the sale. If you have an account, log in and view the sale. If you do not, you must create an account under the "Create New Account" tab in the upper left hand corner of the screen. You will need to confirm this account through your e-mail. *It is best to do this at least a day before the sale.*

You DO NOT have to be approved just to watch the sale but you will still need to create an account with DVAuction. To register for a buyer's number, call Brooke at 704-322-9770 prior to the sale to be approved to bid online.

3. ABSENTEE BIDDING

For people who can not view or bid on the sale at sale time, we have can handle closed bids in house and assist you with absentee bidding. Contact Marcus at 704-322-0840 for more information.

*"Now, our God, we give you thanks,
and praise your glorious name."*

1 CHRONICLES 29:13



TABLE OF CONTENTS

TUESDAY - DECEMBER 6, 2022 - 1:00 PM EST

PAGE ONE

Video Sale Information

Pg 2

Table of Contents

Pgs 3-4

LOT NUMBER	LOAD NUMBER	TYPE	BASE WT.	PRODUCER	STATE	DELIVERY	PAGE NUMBER
Lot 2483	1 Load	Steers	575 lbs.	B & F Farms * GAP VNB NHTC	NC	Dec 12-20	Pg 5
Lot 2484	1 Load	Steers	585 lbs.	Matt Hannah Cattle Co	NC	Dec 19-23	Pg 5
Lot 2485	0.65 Load	Steers	650 lbs.	Dent Farms *	GA	Dec 12-16	Pg 6
Lot 2486	1 Load	Steers	675 lbs.	Rocking H Cattle Co * GAP VNB NHTC CARE	NC	Dec 16-22	Pg 6
Lot 2487	2 Loads	Steers	750 lbs.	Donald Chriscoe Farm *	NC	Dec 8-16	Pg 7
Lot 2488	0.5 Load	Steers	750 lbs.	Bar O Cattle Co GAP	NC	Dec 12-16	Pg 7
Lot 2489	2 Loads	Steers	775 lbs.	Rocking H Cattle Co * GAP VNB NHTC CARE	NC	Dec 8-16	Pg 8
Lot 2490	2 Loads	Steers	780 lbs.	HRW Farms * GAP VNB NHTC	NC	Dec 12-16	Pg 8
Lot 2491	1 Load	Steers	800 lbs.	Second Chance Farms Inc * GAP VNB NHTC	NC	Dec 27-31	Pg 9
Lot 2492	1 Load	Steers	825 lbs.	Satterwhite Farms LLC * GAP VNB NHTC	SC	Dec 12-16	Pg 9
Lot 2493	1 Load	Steers	825 lbs.	McDannald Cattle Co * GAP VNB NHTC	SC	Dec 8-16	Pg 10
Lot 2494	1 Load	Steers	850 lbs.	Porter Farms * GAP VNB NHTC	NC	Dec 8-16	Pg 10
Lot 2495	1 Load	Steers	850 lbs.	HRW Farms * GAP VNB NHTC	NC	Dec 12-16	Pg 11
Lot 2496	1 Load	Steers	900 lbs.	Windell Talley *	NC	Dec 7-14	Pg 11
Lot 2497	1 Load	Steers	925 lbs.	HRW Farms * GAP VNB NHTC	NC	Dec 12-16	Pg 12
Lot 2498	1 Load	Heifers	500 lbs.	B & F Farms * GAP VNB NHTC	NC	Dec 12-20	Pg 12
Lot 2499	1 Load	Heifers	625 lbs.	Dent Farms *	GA	Dec 19-23	Pg 13
Lot 2500	0.45 Load	Heifers	625 lbs.	A & G Farms *	NC	Dec 12-16	Pg 13
Lot 2501	1 Load	Heifers	680 lbs.	Harrison Cattle *	SC	Dec 12-16	Pg 14
Lot 2502	1 Load	Heifers	700 lbs.	Rocking H Cattle Co * GAP VNB NHTC CARE	NC	Dec 8-16	Pg 14
Lot 2503	1 Load	Heifers	700 lbs.	Wester Farms	NC	Dec 7-12	Pg 15
Lot 2504	1 Load	Heifers	700 lbs.	Dagenhart Cattle	NC	Dec 12-16	Pg 15
Lot 2505	1 Load	Heifers	725 lbs.	Herman Farms *	NC	Dec 12-16	Pg 16
Lot 2506	2 Loads	Heifers	750 lbs.	HRW Farms * GAP VNB NHTC	NC	Dec 12-16	Pg 16

TABLE OF CONTENTS CONTINUED ON NEXT PAGE...

* = All-Natural
 GAP = GAP Certified
 VNB = Verified Natural
 NE3 = NeverEver 3
NHTC = Non-Hormone Treated
CARE = BeefCARE Certified

Most loads have weight stops at 25-50 lbs. over the base weight.

UPDATE: The individual weight stops are posted on each lot. Cattle that are picked up after the stated delivery dates will be subject to a **2# PER DAY** increase on the base weight and any weight stops for each day late after the last stated delivery date.



TABLE OF CONTENTS

TUESDAY - DECEMBER 6, 2022 - 1:00 PM EST

PAGE TWO

LOT NUMBER	LOAD NUMBER	TYPE	BASE WT.	PRODUCER	STATE	DELIVERY	PAGE NUMBER
Lot 2507	1 Load	Heifers	765 lbs.	Ridgecrest Farms	NC	Dec 8-16	Pg 17
Lot 2508	1 Load	Heifers	800 lbs.	Second Chance Farms Inc *GAP VNB NHTC	NC	Jan 9-13	Pg 17
Lot 2509	1 Load	Heifers	850 lbs.	Porter Farms *GAP VNB NHTC	NC	Dec 8-16	Pg 18
Lot 2510	1 Load	Heifers	900 lbs.	HRW Farms *GAP VNB NHTC	NC	Dec 12-16	Pg 18
Lot 2511	0.8 Load	Steers Heifers	475 lbs. 425 lbs.	B & F Farms *GAP VNB NHTC	NC	Dec 12-20	Pg 19
Lot 2512	0.9 Load	Steers Heifers	625 lbs. 560 lbs.	Justin Collins Cattle *	GA	Dec 12-20	Pg 19
Lot 2513	1 Load	Steers Heifers	625 lbs. 600 lbs.	Herman Farms *	NC	Dec 12-16	Pg 20
Lot 2514	1 Load	Steers Heifers	675 lbs. 650 lbs.	Rylee Farms & Cattle Co *	GA	Dec 12-16	Pg 20
Lot 2515	1 Load	Steers Heifers	750 lbs. 725 lbs.	K & A Farm *VNB NHTC	SC	Dec 12-20	Pg 21
Lot 2516	1 Load	Steers Heifers	775 lbs. 750 lbs.	Lazy L Land & Cattle Co *GAP VNB NHTC	GA	Dec 12-16	Pg 21
Lot 2517	1 Load	Steers Heifers	785 lbs. 750 lbs.	Meadow Lane Beef LLC *GAP NE3 NHTC	NC	Dec 9-13	Pg 22
Lot 2518	0.4 Load	Heifers	730 lbs.	Meadow Lane Beef LLC *GAP NE3 NHTC	NC	Dec 9-13	Pg 22
Lot 2519	1 Load	Steers Heifers	800 lbs. 790 lbs.	Falling Creek Cattle Co	NC	Dec 17-20	Pg 23
EBS Farms Bull Sale							Pg 24
DV Auction Online Bidding							Pg 25
Upcoming Sale Dates							Pg 26
MACS Sale Terms & Conditions							Pg 27

* = All-Natural GAP = GAP Certified VNB = Verified Natural NE3 = NeverEver 3
NHTC = Non-Hormone Treated CARE = BeefCARE Certified

Most loads have weight stops at 25-50 lbs. over the base weight.

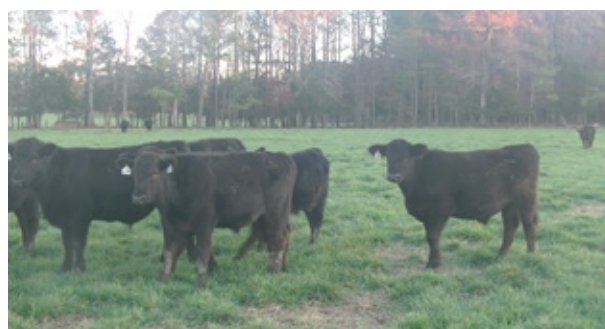
UPDATE: The individual weight stops are posted on each lot. Cattle that are picked up after the stated delivery dates will be subject to a **2# PER DAY** increase on the base weight and any weight stops for each day late after the last stated delivery date.

Lot 2483 1 Load of STEERS

Price: \$ _____ Buyer # _____

B & F Farms

Goldston, NC - 20 miles south of Siler City, NC

Home-Raised, GAP-4, Verified Natural, Backgrounded, Weaned**Base Weight: 575 lbs. Wt. Stop: 615 lbs. Variance: 150 lbs.****Pickup Date:** December 12-20 **Estimated Head Count** 84**Slide/Shrink:** 2% shrink and slide \$10/cwt topside only**Weigh:** Certified ground scales at farm**Notice to load:** 72 hours **Weaned:** 60+ days**Colors:** 95% blk/bwf, 5% ch-x or red**Muscling:** 90% #1, 10% #1.5**Nutrition:** Bunk fed 3# per head of 14% grower feed on fescue grass with hay and Purina mineral.**Vaccinations:** Pyramid 5 + Presponse (1x), Pyramid 5 (1x), Covexin 8 (2x)**Dewormer:** Dectomax (2x) **Implants:** None**Genetics:** 70% Angus or more. Sired by Angus bulls out of Angus-X cows.**Natural Status:** GAP-4; BeefTraxx Verified Natural; NHTC; Source & Age; Seller Affidavit**Comments:** Broke to bunks and waters. Home-raised and all-natural. Calves have mainly just been running on grass with only a little feed and will be carrying just a grass flesh. GAP certificate will transfer at no cost to buyer (GAP#17641, Exp. 12/21/22). Over 100 head to sort a load out of.**MACS Rep:** Marcus Harward, 704-322-0840**Programs:****Flesh:** Medium**Frame:** Medium**Lot 2484 1 Load of STEERS**

Price: \$ _____ Buyer # _____

Hannah Cattle Company (Matt Hannah)

Advance, NC - 25 miles northeast of Statesville, NC

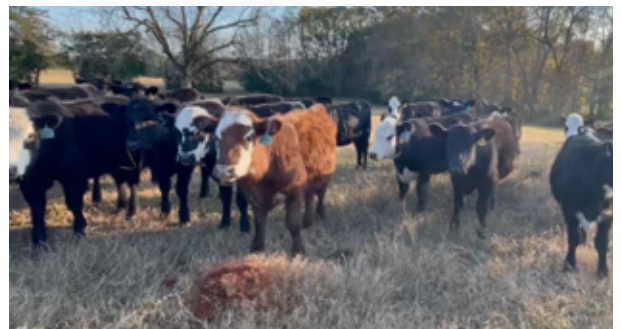
Backgrounded, Weaned, BQA Certified**Base Weight: 585 lbs. Wt. Stop: 620 lbs. Variance: 150 lbs.****Pickup Date:** December 12-16 **Estimated Head Count** 83**Slide/Shrink:** 2% shrink and slide \$10/cwt topside only**Weigh:** Hauled 20 miles, weighed on truck (TA exit 170, Mocksville)**Notice to load:** 48 hours **Weaned:** 60+ days**Colors:** 94% blk/bwf, 3 hd ch-x, 2 hd red/rwf**Muscling:** 90% #1, 10% #1.5**Nutrition:** Bunk fed 7-8 lbs. of 13% CPC commodity feed with free choice mineral, pasture, and hay.**Vaccinations:** PrimeVAC - Vista Once (1x), Vista 5 (1x), Nasalgen IP (1x), Cavalry 9 (2x)**Dewormer:** Safeguard (1x), Dectomax Inj (1x) **Implants:** Ralgro**Genetics:** Commercial Angus-based.**Natural Status:** No**Comments:** Broke to bunks and waters. Put together from local producers, triple vaccinated, and backgrounded on pasture being fed just a little bit to keep them coming up. There are over 100 head to sort the load out of.**MACS Rep:** Jimmy Dagenhart, 704-425-3587**Programs:****Flesh:** Medium**Frame:** Medium

Lot 2485 0.65 Load of STEERS

Price: \$ _____ Buyer # _____

Dent Farms (Tommy Dent)

Thomson, GA - 25 miles west of Augusta, GA

Home-Raised, Affidavit Natural, Backgrounded, Weaned**Base Weight:** 650 lbs. **Wt. Stop:** 685 lbs. **Variance:** 150 lbs.**Pickup Date:** December 19-23 **Estimated Head Count** 47**Slide/Shrink:** 2% shrink and slide \$7/cwt topside only**Weigh:** Certified MACS ground scales at farm**Notice to load:** 48 hours **Weaned:** 60+ days**Colors:** 42 hd blk/bwf, 2 hd ch-x, 3 hd red/rwf**Muscling:** 95% #1, 5% #1.5**Nutrition:** Bunk fed 8-10# ph/pd of 14% Oglethorpe Grower feed with free choice Purina mineral, pasture, and hay.**Vaccinations:** Pyramid 5 + Presponse (2x), Vision 7 w/somnus (2x)**Dewormer:** Eprinex (1x)**Implants:** None**Genetics:** 50%+ Angus. Sired by Angus, Red Angus, or SimAngus bulls out of Angus-X, Red Angus-X, and Char-X cows.**Natural Status:** Seller Affidavit**Comments:** Broke to bunks and waters. A very nice set of calves from a very good program that have done a great job on their vaccination and management programs. Calves qualify as all-natural and will sign natural affidavits for the buyer. Approximately a 30,000# load.**MACS Rep:** David Landreth, 864-444-8214**Programs:****Natural
AFFIDAVIT**Boehringer
IngelheimNEW QUALITY ASSURANCE
GEORGIA**Flesh:** Medium**Frame:** Medium**Lot 2486 1 Load of STEERS**

Price: \$ _____ Buyer # _____

Rocking H Cattle Company

Norwood, NC - 40 miles east of Charlotte, NC

Home-Raised, GAP-4, Verified Natural, NHTC, Backgrounded, Weaned**Base Weight:** 675 lbs. **Wt. Stop:** 715 lbs. **Variance:** 150 lbs.**Pickup Date:** December 16-22 **Estimated Head Count** 72**Slide/Shrink:** No shrink and slide \$7/cwt topside only**Weigh:** Hauled 10 miles to SCLM, weighed on certified ground scales**Notice to load:** 48 hours **Weaned:** 90+ days**Colors:** 85% blk/bwf, 15% ch-x or red**Muscling:** 90% #1, 10% #1.5**Nutrition:** Bunk fed 25# TMR (silage, wet corn gluten, cotton, soyhulls) with free choice mineral and hay.**Vaccinations:** Vista Once (1x), Inforce 3 (1x), Vision 7 (1x)**Dewormer:** Safeguard**Implants:** None**Genetics:** 50-75% Angus. Sired by Angus and SimAngus bulls out of Angus-based cows.**Natural Status:** GAP-4; IMI Verified Natural; BeefCare; NHTC; SAV; Seller Affidavit**Comments:** Broke to bunks and waters. BQA Certified. A very good set of calves with natural certifications complete and will transfer at no cost to the buyer.**MACS Rep:** Marcus Harward, 704-322-0840**Programs:****Natural
AFFIDAVIT**global animal
PARTNERSHIPNEW QUALITY ASSURANCE
GEORGIAimiNHTCUSDA
MEAT & POULTRY
INSPECTIONPrimeVAC
BY MERCK ANIMAL HEALTHSafety That Counts**Flesh:** Medium**Frame:** Medium

Lot 2487 2 Loads of STEERS

Price: \$ _____ Buyer # _____

Donald Chriscoe Farm

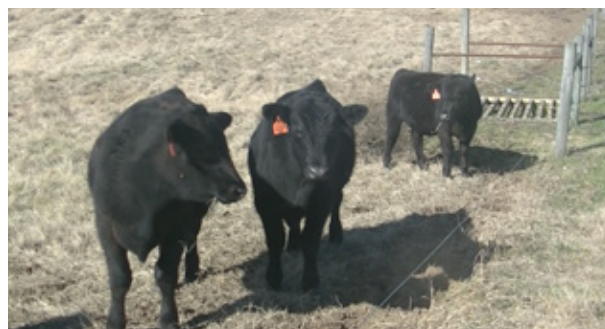
Asheboro, NC - 40 miles south of Greensboro, NC

Affidavit Natural, Backgrounded, Weaned**Base Weight:** 750 lbs. **Wt. Stop:** 785 lbs. **Variance:** 150 lbs.**Pickup Date:** December 8-16 **Estimated Head Count** 129**Slide/Shrink:** 2% shrink and slide \$6/cwt topside only**Weigh:** Certified ground scales at farm**Notice to load:** 24-48 hours **Weaned:** 120+ days**Colors:** 92% blk/bwf, 8% ch-x or red**Flesh:** Medium**Muscling:** 95% #1, 5% #1.5**Frame:** Medium**Nutrition:** Bunk fed haylage and TMR (wet corn gluten, cotton) with access to mineral, hay, and rye grass**Vaccinations:** Vista 5 (2x), Nuplura (1x), Vision 7 20/20 (1x), Ocuguard Pinkeye (1x)**Dewormer:** Ivomec Inject. (2x)**Implants:** None**Genetics:** Commercial Angus-based. Mainly sired by Angus and SimAngus bulls.**Natural Status:** Seller Affidavit**Comments:** Broke to bunks and waters. Reputational calves purchased from local producers and backgrounded at Chriscoe's for 100+ days. Owner affidavit natural - signed Meyer's affidavits from original producers.**MACS Rep:** Marcus Harward, 704-322-0840**Programs:***Natural*
AFFIDAVIT**Lot 2488 0.5 Load of STEERS**

Price: \$ _____ Buyer # _____

Bar O Cattle Co

Eden, NC - 35 miles north of Greensboro, NC

Home-Raised, GAP-4, Affidavit Natural, Backgrounded, Weaned**Base Weight:** 750 lbs. **Wt. Stop:** 785 lbs. **Variance:** 150 lbs.**Pickup Date:** December 12-16 **Estimated Head Count** 32**Slide/Shrink:** 2% shrink and slide \$6/cwt topside only**Weigh:** Certified truck scales**Notice to load:** 48 hours **Weaned:** 100+ days**Colors:** 100% blk/bwf**Flesh:** Medium**Muscling:** 95% #1, 5% #1.5**Frame:** Medium**Nutrition:** Bunk fed 2# ph pd to keep them coming up with free choice fescue pasture, mineral, and hay.**Vaccinations:** Bovi-Shield Gold One Shot (1x), Vision 7 20/20 (2x)**Dewormer:** Ivermectin, Safeguard**Implants:** None**Genetics:** 75%+ Angus. Sired by Angus bulls out of Angus-based cows.**Natural Status:** GAP-4; Seller Affidavit**Comments:** Broke to bunks and waters. A very good set of steers that are all-natural and GAP certified. They have been weaned for over 100 days and mainly running on pasture getting just a little feed.**MACS Rep:** Marcus Harward, 704-322-0840**Programs:***Natural*
AFFIDAVIT

Lot 2489 2 Loads of STEERS

Price: \$ _____ Buyer # _____

Rocking H Cattle Company

Turnersburg, NC - 10 miles north of Statesville, NC

Home-Raised, GAP-4, Verified Natural, NHTC, Backgrounded, Weaned**Base Weight: 775 lbs. Wt. Stop: 815 lbs. Variance: 150 lbs.****Pickup Date:** December 8-16 **Estimated Head Count** 125**Slide/Shrink:** 1% shrink and slide \$5/cwt topside only**Weigh:** Certified ground scales at HBLM**Notice to load:** 48 hours **Weaned:** 90+ days**Colors:** 90% blk/bwf, 10% ch-x or red**Muscling:** 95% #1, 5% #1.5**Nutrition:** Bunk fed 25# TMR (silage, wet corn gluten, cotton, soyhulls) with free choice mineral and hay.**Vaccinations:** Vista Once (1x), Vista 5 (1x), Vision 7 (2x)**Dewormer:** Safeguard, LongRange**Implants:** None**Genetics:** 50-75% Angus. Sired by Angus and SimAngus bulls out of Angus-based cows.**Natural Status:** GAP-4; IMI Verified Natural; BeefCare; NHTC; SAV; Seller Affidavit**Comments:** Broke to bunks and waters. BQA Certified. A very good set of calves with natural certifications complete and will transfer at no cost to the buyer.**MACS Rep:** Marcus Harward, 704-322-0840**Programs:****Flesh:** Medium**Frame:** Medium**Lot 2490 2 Loads of STEERS**

Price: \$ _____ Buyer # _____

HRW Farms #1

Thurmond, NC - 10 miles north of Elkin, NC

Home-Raised, GAP-4, Verified Natural, NHTC, Backgrounded, Weaned**Base Weight: 780 lbs. Wt. Stop: 820 lbs. Variance: 150 lbs.****Pickup Date:** December 12-16 **Estimated Head Count** 124**Slide/Shrink:** 2% shrink and slide \$5/cwt topside only**Weigh:** Certified ground scales at farm**Notice to load:** 48 hours **Weaned:** 60+ days**Colors:** 50% blk/bwf, 50% char-x or red**Muscling:** 95% #1, 5% #1.5**Nutrition:** Bunk fed 15# ph/pd of 14% feed and silage with free choice mineral and hay and on a 10 acre pasture.**Vaccinations:** Bovi-Shield Gold One Shot (1x), Bovi-Shield Gold 5 (1x), Alpha 7 (1x), Vision 7 20/20 (1x)**Dewormer:** Dectomax**Implants:** None**Genetics:** Sired by Charolais, Angus, and SimAngus bulls out of crossbred cows. All chars are crossbred with a black nose or gray/yellow, no purebred pink-noses.**Natural Status:** GAP-4; Pending Verified Natural; NHTC; Source & Age; Seller Affidavit**Comments:** Broke to bunks and waters. Home-raised, high-growth steers with Charolais and Angus genetics. Reputational calves from a very good program. GAP-4 certificate can transfer at no cost to buyer. Will be EID tagged prior to shipment if needed. (GAP#17770, Exp 3/23/23)**MACS Rep:** Marcus Harward, 704-322-0840**Programs:****Flesh:** Medium**Frame:** 90% Med, 10% Large

Lot 2491 1 Load of STEERS

Price: \$ _____ Buyer # _____

Second Chance Farms Inc

Pink Hill, NC - 30 miles southeast of Goldsboro, NC

Home-Raised, GAP-4, Verified Natural, Backgrounded, Weaned**Base Weight: 800 lbs. Wt. Stop: 845 lbs. Variance: 150 lbs.****Pickup Date:** December 27-31 **Estimated Head Count** 60**Slide/Shrink:** 1% shrink and slide \$5/cwt topside only**Weigh:** Hauled 15 miles, weighed on certified truck scales**Notice to load:** 48 hours **Weaned:** 90+ days**Colors:** 95% blk/bwf, 1-2 hd ch-x**Muscling:** 95% #1, 5% #1.5**Nutrition:** Bunk fed TMR (baleage, soyhulls, wet corn gluten) with calcium and minerals and on grass lots.**Vaccinations:** Vista Once (2x), Vision 7 (2x), Multimin (1x)**Dewormer:** Synanthic (1x), Dectomax Inject (1x) **Implants:** None**Genetics:** 50-60% Angus, 40-50% Sim. Sired by SimAngus bulls from Gibbs Farms & Fred Smith out of Angus-based and SimAngus cows. Sires average in the top 15% for the Simmental Terminal Index (all top 30% or better) and average top 15% for Marbling and Yearling Weight. Genetics include Triple Crown, Mountaineer, Premier, Statement, Nighthawk, and more as well as some AI sires.**Natural Status:** GAP-4; BeefTraxx Verified Natural; NHTC; Source & Age; Seller Affidavit**Comments:** Broke to bunks and waters. An excellent, fancy set of calves from the top end of the calf crop. Calves are EID tagged and natural certifications are complete and will transfer at no cost. Last 2 years calves have averaged 95% Prime & Choice. An excellent set of feeding genetics.**MACS Rep:** Jeff Martin, 910-379-9173**Programs:****Flesh:** Medium**Frame:** Medium**Lot 2492 1 Load of STEERS**

Price: \$ _____ Buyer # _____

Satterwhite Farms LLC

Newberry, SC - 40 miles northwest of Columbia, SC

Home-Raised, GAP-4, Verified Natural, NHTC, Backgrounded, Weaned**Base Weight: 825 lbs. Wt. Stop: 860 lbs. Variance: 150 lbs.****Pickup Date:** December 12-16 **Estimated Head Count** 59**Slide/Shrink:** 2% shrink and slide \$5/cwt topside only**Weigh:** Certified MACS ground scales at farm**Notice to load:** 48 hours **Weaned:** 75+ days**Colors:** 100% blk/bwf**Muscling:** 95% #1, 5% #1.5**Nutrition:** Bunk fed 25-30# TMR silage, gluten, soyhulls, soybean meal, and Multikare mineral with free choice pasture, and hay.**Vaccinations:** Vista Once (1x), Vista 5 (1x), Vision 7 w/somnus (2x)**Dewormer:** LongRange (1x), Safeguard (1x) **Implants:** None**Genetics:** 60-75% Angus. Sired by Yon Angus & SimAngus bulls out of Angus, Red Angus, and SimAngus-X cows.**Natural Status:** GAP-4; IMI Verified Natural; NHTC; Source & Age; Seller Affidavit**Comments:** Broke to bunks and waters. Docile. Calves born last fall from an excellent program. Reputational calves that meet natural certifications; GAP certificate will transfer at no cost to buyer.**MACS Rep:** David Landreth, 864-444-8214**Programs:****Flesh:** Medium**Frame:** Medium

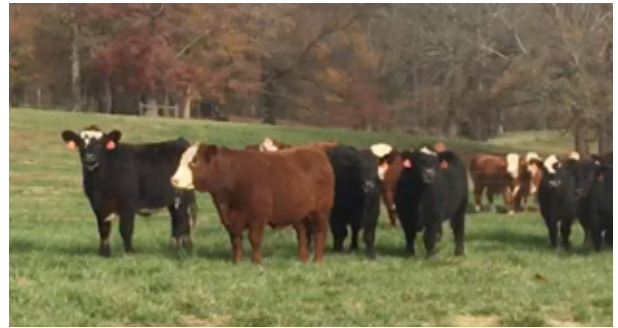
Lot 2493 1 Load of STEERS

Price: \$ _____ Buyer # _____

McDannald Cattle Company

Fountain Inn, SC - 20 miles southeast of Greenville, SC

Home-Raised, GAP-4, Verified Natural, NHTC, Backgrounded, Weaned

Base Weight: 825 lbs. **Wt. Stop:** 860 lbs. **Variance:** 150 lbs.**Pickup Date:** December 8-16 **Estimated Head Count** 59**Slide/Shrink:** 2% shrink and slide \$5/cwt topside only**Weigh:** Certified ground scales at farm**Notice to load:** 24-48 hours **Weaned:** 120+ days**Colors:** 46 hd blk/bwf, 7 hd ch-x, 5 hd red/rwf**Muscling:** 100% #1**Nutrition:** Bunk fed 14-16# ph/pd of TMR (silage, corn gluten, soyhulls) with free choice VitaFerm GainSmart mineral, pasture, and hay.**Vaccinations:** Vista Once (1x), Vista 5 (1x), Nasalgen 3 PMH (1x), Vision 7 w/somnus (2x), Pinkeye (1x)**Dewormer:** LongRange (1x), Safeguard (1x) **Implants:** None**Genetics:** 50-75% Angus, 25-50% Continental. Sired by Angus bulls out of Angus-X cows.**Natural Status:** GAP-4; BeefTraxx Verified Natural; NHTC; Source & Age; Seller Affidavit**Comments:** Broke to bunks and waters. A very good set of docile steers mainly grazing pasture and getting a TMR. 1 head with 2-3 in horn regrowth. BQA Certified. Will be EID tagged for Verified Natural if needed. GAP-4 certificate transfers at no cost to buyer. (GAP#18795; Exp. 1/16/24)**MACS Rep:** David McDannald, 864-360-0481**Programs:****Flesh:** Medium**Frame:** Medium**Lot 2494 1 Load of STEERS**

Price: \$ _____ Buyer # _____

Porter Farms

Mt Pleasant, NC - 25 miles northwest of Charlotte, NC

Home-Raised, GAP-4, Verified Natural, Backgrounded, Weaned

Base Weight: 850 lbs. **Wt. Stop:** 885 lbs. **Variance:** 200 lbs.**Pickup Date:** December 8-16 **Estimated Head Count** 57**Slide/Shrink:** 2% shrink and slide \$5/cwt topside only**Weigh:** Certified MACS ground scales at farm**Notice to load:** 48 hours **Weaned:** 60+ days**Colors:** 51 hd blk/bwf, 7 hd Hereford**Muscling:** 95% #1, 5% #1.5**Nutrition:** Bunk fed silage and commodity feed with free choice mineral, pasture, and hay.**Vaccinations:** CattleMaster One Shot (1x), Inforce 3 (1x), Vision 7 (2x)**Dewormer:** Eprinex (2x) **Implants:** None**Genetics:** Sired by Angus bulls out of Angus or AngusXHereford cows. Hereford sired by Hereford bulls out of Hereford-X cows.**Natural Status:** GAP-4; IMI Verified Natural; NHTC; Source & Age; Seller Affidavit**Comments:** Broke to bunks and waters. Docile, fancy calves that should finish as a big set of feeders. A very good reputational load of cattle coming from a good program. GAP certification can transfer at no cost to buyer.**MACS Rep:** Marcus Harward, 704-322-0840**Programs:****Flesh:** Medium**Frame:** Medium

Lot 2495 1 Load of STEERS

Price: \$ _____ Buyer # _____

HRW Farms #2

Thurmond, NC - 10 miles north of Elkin, NC

Home-Raised, GAP-4, Verified Natural, NHTC, Backgrounded, Weaned**Base Weight:** 850 lbs. **Wt. Stop:** 890 lbs. **Variance:** 150 lbs.**Pickup Date:** December 12-16 **Estimated Head Count** 57**Slide/Shrink:** 2% shrink and slide \$5/cwt topside only**Weigh:** Certified ground scales at farm**Notice to load:** 48 hours **Weaned:** 60+ days**Colors:** 25% blk/bwf, 75% char-x or red**Muscling:** 95% #1, 5% #1.5**Nutrition:** Bunk fed 15# ph/pd of 14% feed and silage with free choice mineral and hay and on a 10 acre pasture.**Vaccinations:** Bovi-Shield Gold One Shot (1x), Bovi-Shield Gold 5 (1x), Alpha 7 (1x), Vision 7 20/20 (1x)**Dewormer:** Dectomax**Implants:** None**Genetics:** Sired by Charolais, Angus, and SimAngus bulls out of crossbred cows. All chars are crossbred with a black nose or gray/yellow, no purebred pink-noses.**Natural Status:** GAP-4; Pending Verified Natural; NHTC; Source & Age; Seller Affidavit**Comments:** Broke to bunks and waters. Home-raised, high-growth steers with Charolais and Angus genetics. Reputational calves from a very good program. GAP-4 certificate can transfer at no cost to buyer. Will be EID tagged prior to shipment if needed. (GAP#17770, Exp 3/23/23)**MACS Rep:** Marcus Harward, 704-322-0840**Programs:****Flesh:** Medium**Frame:** 90% Med, 10% Large**Lot 2496 1 Load of STEERS**

Price: \$ _____ Buyer # _____

Windell Talley

Stanfield, NC - 15 miles east of Charlotte, NC

Home-Raised, Affidavit Natural, Backgrounded, Weaned**Base Weight:** 900 lbs. **Wt. Stop:** 935 lbs. **Variance:** 150 lbs.**Pickup Date:** December 7-14 **Estimated Head Count** 54**Slide/Shrink:** 2% shrink and slide \$5/cwt topside only**Weigh:** On the truck at Talley Feed Mill**Notice to load:** 48 hours **Weaned:** 90+ days**Colors:** 63 hd blk/bwf, 4 hd red**Muscling:** 100% #1**Nutrition:** Bunk fed TMR (silage, wheat midds, soyhulls) with free choice mineral**Vaccinations:** Vista Once (1x), Vista 5 (1x), Vision 7 w/somnus (2x)**Dewormer:** Safeguard (1x), LongRange (1x)**Implants:** None**Genetics:** 50%+ Angus. Sired by Leachman genetics (Angus & black Stabilizer) out of Leachman influenced Angus & Stabilizer cows**Natural Status:** Seller Affidavit**Comments:** Broke to bunks and waters. BQA Certified. Reputational steers. Qualify as all-natural and will sign affidavits. Will be a couple with a blue eye. Steers were castrated at weaning ~90 days ago.**MACS Rep:** Bruce Shankle, 704-694-8686**Programs:****Flesh:** Medium**Frame:** Medium

Lot 2497 1 Load of STEERS

Price: \$ _____ Buyer # _____

HRW Farms #2

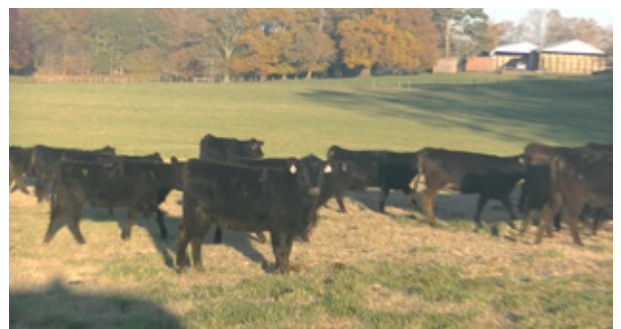
Thurmond, NC - 10 miles north of Elkin, NC

Home-Raised, GAP-4, Verified Natural, NHTC, Backgrounded, Weaned**Base Weight: 925 lbs. Wt. Stop: 965 lbs. Variance: 150 lbs.****Pickup Date:** December 12-16 **Estimated Head Count** 52**Slide/Shrink:** 2% shrink and slide \$5/cwt topside only**Weigh:** Certified ground scales at farm**Notice to load:** 48 hours **Weaned:** 60+ days**Colors:** 25% blk/bwf, 75% char-x or red**Muscling:** 95% #1, 5% #1.5**Nutrition:** Bunk fed 15# ph/pd of 14% feed and silage with free choice mineral and hay and on a 10 acre pasture.**Vaccinations:** Bovi-Shield Gold One Shot (1x), Bovi-Shield Gold 5 (1x), Alpha 7 (1x), Vision 7 20/20 (1x)**Dewormer:** Dectomax**Implants:** None**Genetics:** Sired by Charolais, Angus, and SimAngus bulls out of crossbred cows. All chars are crossbred with a black nose or gray/yellow, no purebred pink-noses.**Natural Status:** GAP-4; Pending Verified Natural; NHTC; Source & Age; Seller Affidavit**Comments:** Broke to bunks and waters. Home-raised, high-growth steers with Charolais and Angus genetics. Reputational calves from a very good program. GAP-4 certificate can transfer at no cost to buyer. Will be EID tagged prior to shipment if needed. (GAP#17770, Exp 3/23/23)**MACS Rep:** Marcus Harward, 704-322-0840**Programs:****Flesh:** Medium**Frame:** 90% Med, 10% Large**Lot 2498 1 Load of HEIFERS**

Price: \$ _____ Buyer # _____

B & F Farms

Goldston, NC - 20 miles south of Siler City, NC

Home-Raised, GAP-4, Verified Natural, Backgrounded, Weaned**Base Weight: 500 lbs. Wt. Stop: 540 lbs. Variance: 150 lbs.****Pickup Date:** December 12-20 **Estimated Head Count** 97**Slide/Shrink:** 2% shrink and slide \$10/cwt topside only**Weigh:** Certified ground scales at farm**Notice to load:** 72 hours **Weaned:** 60+ days**Colors:** 95% blk/bwf, 5% ch-x or red**Muscling:** 90% #1, 10% #1.5**Nutrition:** Bunk fed 3# per head of 14% grower feed on fescue grass with hay and Purina mineral.**Vaccinations:** Pyramid 5 + Presponse (1x), Pyramid 5 (1x), Covexin 8 (2x)**Dewormer:** Dectomax (2x)**Implants:** None**Genetics:** 70% Angus or more. Sired by Angus bulls out of Angus-X cows.**Natural Status:** GAP-4; BeefTraxx Verified Natural; NHTC; SAV; Affidavit**Heifers Open:** Guaranteed open, not palpated.**Comments:** Broke to bunks and waters. Home-raised and all-natural. Calves have mainly just been running on grass with only a little feed and will be carrying just a grass flesh. GAP certificate will transfer at no cost to buyer (GAP#17641, Exp. 12/21/22) 150 head to sort a load out of.**MACS Rep:** Marcus Harward, 704-322-0840**Programs:****Flesh:** Medium**Frame:** Medium

Lot 2499 1 Load of HEIFERS

Price: \$ _____ Buyer # _____

Dent Farms (Tommy Dent)

Thomson, GA - 25 miles west of Augusta, GA

Home-Raised, Affidavit Natural, Backgrounded, Weaned**Base Weight:** 625 lbs. **Wt. Stop:** 660 lbs. **Variance:** 150 lbs.**Pickup Date:** December 19-23 **Estimated Head Count** 78**Slide/Shrink:** 2% shrink and slide \$7/cwt topside only**Weigh:** Certified MACS ground scales at farm**Notice to load:** 48 hours **Weaned:** 60+ days**Colors:** 73 hd blk/bwf, 1 hd ch-x, 2 hd red/rwf**Muscling:** 95% #1, 5% #1.5**Nutrition:** Bunk fed 8-10# ph/pd of 14% Oglethorpe Grower feed with free choice Purina mineral, pasture, and hay.**Vaccinations:** Pyramid 5 + Presponse (2x), Vision 7 w/somnus (2x)**Dewormer:** Eprinex (1x)**Implants:** None**Genetics:** 50%+ Angus. Sired by Angus, Red Angus, or SimAngus bulls out of Angus-X, Red Angus-X, and Char-X cows.**Natural Status:** Seller Affidavit**Heifers Open:** Guaranteed open, not palpated.**Comments:** Broke to bunks and waters. A very nice set of calves from a very good program that have done a great job on their vaccination and management programs. Calves qualify as all-natural and will sign natural affidavits for the buyer.**MACS Rep:** David Landreth, 864-444-8214**Programs:****Natural**
AFFIDAVITBoehringer
IngelheimNEW QUALITY ASSURANCE
GEORGIA**Flesh:** Medium**Frame:** Medium**Lot 2500 0.45 Load of HEIFERS**

Price: \$ _____ Buyer # _____

A & G Farms

Siler City, NC - 30 miles southeast of Greensboro, NC

Home-Raised, Affidavit Natural, Backgrounded, Weaned**Base Weight:** 625 lbs. **Wt. Stop:** 660 lbs. **Variance:** 175 lbs.**Pickup Date:** December 12-16 **Estimated Head Count** 35**Slide/Shrink:** 2% shrink and slide \$7/cwt topside only**Weigh:** Certified MACS ground scales at farm**Notice to load:** 48 hours **Weaned:** 60+ days**Colors:** 100% blk/bwf**Muscling:** 95% #1, 5% #1.5**Nutrition:** Bunk fed a few lbs per day of commodity pellets with free choice mineral, pasture, and hay**Vaccinations:** CattleMaster (1x), Vision 7 20/20 (1x)**Dewormer:** Dectomax**Implants:** None**Genetics:** 50%+ Angus. Sired by Angus bulls out of Angus-based cows.**Natural Status:** Seller Affidavit**Heifers Open:** Guaranteed open, not palpated.**Comments:** Broke to bunks and waters. A very good partial load of heifers. Weaned, vaccinated, all blk or bwf. 35 head ready to go to grass or feed.**MACS Rep:** Marcus Harward, 704-322-0840**Programs:****Natural**
AFFIDAVITzoetisNEW QUALITY ASSURANCE
GEORGIA**Flesh:** Medium**Frame:** Medium

Lot 2501 1 Load of HEIFERS**

Price: \$ _____ Buyer # _____

Harrison Cattle

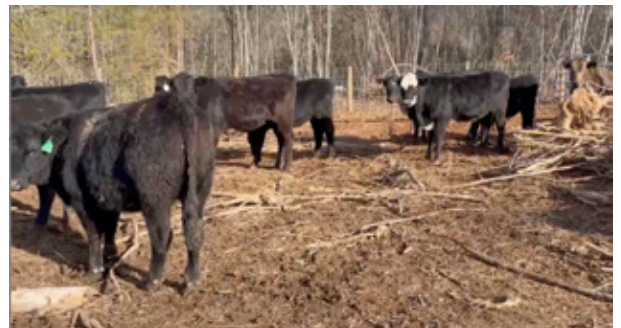
Batesburg, SC - 30 miles west of Columbia, SC

Home-Raised, Affidavit Natural, Backgrounded, Weaned**Base Weight:** 680 lbs. **Wt. Stop:** 715 lbs. **Variance:** 175 lbs.**Pickup Date:** December 12-16 **Estimated Head Count** 58**Slide/Shrink:** 2% shrink and slide \$6/cwt topside only**Weigh:** Certified MACS ground scales at farm**Notice to load:** 48 hours **Weaned:** 60+ days**Colors:** 55 hd blk/bwf, 3 hd red/rwf**Muscling:** 95% #1, 5% #1.5**Nutrition:** Bunk fed 8-10# ph/pd of 14% Performance feed with free choice Purina mineral, pasture, and hay.**Vaccinations:** Vista Once (1x), Vista 5 (1x), Vision 7 w/somnus (2x)**Dewormer:** Ivermec (1x)**Implants:** None**Genetics:** 50%+ Angus. Sired by Yon Angus, SimAngus, and Ultrablack bulls out of Angus-X, SimAngus-X, or UltraBlack-X cows.**Natural Status:** Seller Affidavit.**Heifers Open:** Guaranteed open, not palpated.**Comments:** Broke to bunks and waters. A very good load of backgrounded, all natural heifers. Calves meet all-natural qualifications and will sign buyer's affidavits as needed. Seller is also willing to go through a Verified Natural audit at buyer's cost.
Approximately 40,000# of heifers at 680# - can finish the load with 800# heifers at \$8/cwt back if buyer wants a full load.MACS Rep:** David Landreth, 864-444-8214**Programs:****Natural
AFFIDAVIT****PrimeVAC**
BY MERCK ANIMAL HEALTH**Flesh:** Medium**Frame:** Medium**Lot 2502 1 Load of HEIFERS**

Price: \$ _____ Buyer # _____

Rocking H Cattle Company

Turnersburg, NC - 10 miles north of Statesville, NC

Home-Raised, GAP-4, Verified Natural, NHTC, Backgrounded, Weaned**Base Weight:** 700 lbs. **Wt. Stop:** 740 lbs. **Variance:** 150 lbs.**Pickup Date:** December 8-16 **Estimated Head Count** 69**Slide/Shrink:** 1% shrink and slide \$6/cwt topside only**Weigh:** Certified ground scales at HBLM**Notice to load:** 48 hours **Weaned:** 90+ days**Colors:** 90% blk/bwf, 10% ch-x or red**Muscling:** 95% #1, 5% #1.5**Nutrition:** Bunk fed 25# TMR (silage, wet corn gluten, cotton, soyhulls) with free choice mineral and hay.**Vaccinations:** Vista Once (1x), Vista 5 (1x), Vision 7 (2x)**Dewormer:** Safeguard, LongRange**Implants:** None**Genetics:** 50-75% Angus. Sired by Angus and SimAngus bulls out of Angus-based cows.**Natural Status:** GAP-4; IMI Verified Natural; BeefCare; NHTC; SAV; Affidavit. **Heifers Open:** Palpated, guaranteed open**Comments:** Broke to bunks and waters. BQA Certified. A very good set of calves with natural certifications complete and will transfer at no cost to the buyer.**MACS Rep:** Marcus Harward, 704-322-0840**Programs:****Natural
AFFIDAVIT****global animal
PARTNERSHIP****NHTC****PrimeVAC**
BY MERCK ANIMAL HEALTH**Flesh:** Medium**Frame:** Medium

Lot 2503 1 Load of HEIFERS

Price: \$ _____ Buyer # _____

Wester Farms

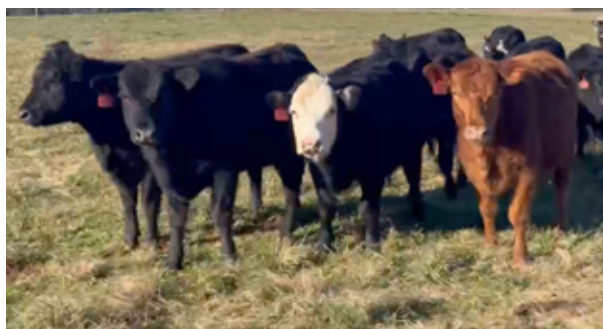
Louisburg, NC - 30 miles northeast of Raleigh, NC

Home-Raised, Backgrounded, Weaned, Guaranteed Open, BQA Certified**Base Weight: 700 lbs. Wt. Stop: 735 lbs. Variance: 200 lbs.****Pickup Date:** December 7-12 **Estimated Head Count** 69**Slide/Shrink:** 2% shrink and slide \$6/cwt topside only**Weigh:** Hauled 10 miles, weighed on the truck**Notice to load:** 48 hours **Weaned:** 75+ days**Colors:** 90% blk/bwf, 10% ch-x or red/rwf**Muscling:** 95% #1, 5% #1.5**Nutrition:** Bunk fed TMR of corn silage, corn gluten, cotton by product, veg scraps, rumensin with free choice mineral, pasture, and hay.**Vaccinations:** KCH Market Ready Program - Pyramid 5 + Presponse (1x), Pyramid 5 (1x), Caliber 7 (2x), Inforce 3 (1x), Multimin (1x)**Dewormer:** Dectomax, Safeguard**Implants:** None**Genetics:** 50-75% Angus - Sired by Angus, SimAngus, or Balancer bulls out of Angus, SimAngus, or Balancer based cows.**Natural Status:** No**Heifers Open:** Palpated, guaranteed open.**Comments:** Broke to bunks and waters. Born last fall with complete records. A very good set of high-performing heifers coming from the Wester Farms program. An excellent set of high growth heifers that will feed and finish well. **Not implanted.****MACS Rep:** Catherine Edwards, 704-550-7920**Programs:****Flesh:** Medium, Med+**Frame:** Medium**Lot 2504 1 Load of HEIFERS**

Price: \$ _____ Buyer # _____

Dagenhart Cattle (Jacob Dagenhart)

Harmony, NC - 10 miles northeast of Statesville, NC

Backgrounded, Weaned, Guaranteed Open**Base Weight: 700 lbs. Wt. Stop: 745 lbs. Variance: 125 lbs.****Pickup Date:** December 12-16 **Estimated Head Count** 69**Slide/Shrink:** 1% shrink and slide \$6/cwt topside only**Weigh:** Hauled 10 miles to HBLM, weighed on certified ground scales**Notice to load:** 48 hours **Weaned:** 60+ days**Colors:** 68 hd blk/bwf, 1 hd ch-x, 3 hd yellow, 5 hd red/rwf**Muscling:** 95% #1, 5% #1.5**Nutrition:** Bunk fed 10# of 14% of commodity feed with free choice mineral, pasture, and hay.**Vaccinations:** Vista 5 (2x), Nasalgen 3 PMH (1x), Vision 7 (2x)**Dewormer:** Safeguard (1x), Dectomax Inj (1x)**Implants:** None**Genetics:** Crossbred Angus-based.**Natural Status:** No**Heifers Open:** Guaranteed open, given lutalyse.**Comments:** Broke to bunks and waters. Purchased locally, triple vaccinated, and backgrounded on pasture. Under an excellent vaccination program. Will be hauled in and weighed on the ground. May be a couple with a small spot in their eye.**MACS Rep:** Jimmy Dagenhart, 704-425-3587**Programs:****Flesh:** Medium**Frame:** Medium

Lot 2505 1 Load of HEIFERS

Price: \$ _____ Buyer # _____

Herman Farms (Kent Herman)

Taylorsville, NC - 30 miles west of Statesville, NC

Home-Raised, Affidavit Natural, Backgrounded, Weaned**Base Weight:** 725 lbs. **Wt. Stop:** 760 lbs. **Variance:** 125 lbs.**Pickup Date:** December 12-16 **Estimated Head Count** 67**Slide/Shrink:** None shrink and slide \$6/cwt topside only**Weigh:** Hauled 35 miles to HBLM, weighed on certified ground scales**Notice to load:** 48-72 hours **Weaned:** 120+ days**Colors:** 63 hd blk/bwf, 2 hd red/rwf, 2 hd ch-x**Muscling:** 95% #1, 5% #1.5**Nutrition:** Bunk fed a few lbs per day of commodity pellets with free choice mineral, pasture, and hay**Vaccinations:** Vista Once (2x), Ultrabac 7 (2x)**Dewormer:** Dectomax Inj (2x)**Implants:** None**Genetics:** 50%+ Angus. Sired by Angus bulls out of Angus-X cows.**Natural Status:** Seller Affidavit.**Heifers Open:** Guaranteed open, not palpated.**Comments:** Broke to bunks and waters. A fancy load of heifers that had planned to keep for replacements. Mainly running on pasture and getting fed just a little bit to keep them coming up. The 2 RWF calves are not full Hereford.**MACS Rep:** Jimmy Dagenhart, 704-425-3587**Programs:****Natural**
AFFIDAVIT**MERCK**
Animal Health**Flesh:** Medium**Frame:** Medium**Lot 2506 2 Loads of HEIFERS**

Price: \$ _____ Buyer # _____

HRW Farms #1

Thurmond, NC - 10 miles north of Elkin, NC

Home-Raised, GAP-4, Verified Natural, NHTC, Backgrounded, Weaned**Base Weight:** 750 lbs. **Wt. Stop:** 790 lbs. **Variance:** 150 lbs.**Pickup Date:** December 12-16 **Estimated Head Count** 129**Slide/Shrink:** 2% shrink and slide \$5/cwt topside only**Weigh:** Certified ground scales at farm**Notice to load:** 48 hours **Weaned:** 60+ days**Colors:** 50% blk/bwf, 50% char-x or red**Muscling:** 95% #1, 5% #1.5**Nutrition:** Bunk fed 15# ph/pd of 14% feed and silage with free choice mineral and hay and on a 10 acre pasture.**Vaccinations:** Bovi-Shield Gold One Shot (1x), Bovi-Shield Gold 5 (1x), Alpha 7 (1x), Vision 7 20/20 (1x)**Dewormer:** Dectomax**Implants:** None**Genetics:** Sired by Charolais, Angus, and SimAngus bulls out of crossbred cows. All chars are crossbred with a black nose or gray/yellow, no purebred pink-noses.**Natural Status:** GAP-4; Pending Verified Natural; NHTC; SAV; Affidavit.**Heifers Open:** Guaranteed open, will be palpated.**Comments:** Broke to bunks and waters. Home-raised, high-growth heifers with Charolais and Angus genetics. Reputational calves from a very good program. GAP-4 certificate can transfer at no cost to buyer. Will be EID tagged prior to shipment if needed. (GAP#17770, Exp 3/23/23)**MACS Rep:** Marcus Harward, 704-322-0840**Programs:****Natural**
AFFIDAVIT**global animal**
PARTNERSHIP**NHTC****USDA**
AMERICAN
VERIFIED**SelectVAC****Flesh:** Medium**Frame:** 90% Med, 10% Large

Lot 2507 1 Load of HEIFERS

Price: \$ _____ Buyer # _____

Ridgecrest Farms

Lawsonville, NC - 35 miles north of Winston-Salem, NC

Backgrounded, Weaned, Guaranteed Open**Base Weight:** 765 lbs. **Wt. Stop:** 800 lbs. **Variance:** 150 lbs.**Pickup Date:** December 8-16 **Estimated Head Count** 63**Slide/Shrink:** 2% shrink and slide \$5/cwt topside only**Weigh:** Certified ground scales at farm**Notice to load:** 48 hours **Weaned:** 90+ days**Colors:** 56 hd blk/bwf, 3-4 hd ch-x, 3-4 hd red**Flesh:** Medium**Muscling:** 95% #1, 5% #1.5**Frame:** Medium**Nutrition:** Bunk fed TMR (chopped hay, soyhulls, and corn gluten) with free choice mineral, pasture, and hay.**Vaccinations:** Bovi-Shield Gold One Shot (1x), Vista Once SQ (1x), Inforce 3 (1x), Vision 7 (2x)**Dewormer:** Ivermectin, Safeguard**Implants:** None**Genetics:** Commercial Angus-based.**Natural Status:** No**Heifers Open:** Vet palpated, guaranteed open.**Comments:** Broke to bunks and waters. Purchased, double vaccinated, and running together for 60-90+ days. 3-5 may have a blue eye. Running out on a 30 acre pasture.**MACS Rep:** Mark Bray, 276-952-5630**Programs:****Lot 2508 1 Load of HEIFERS**

Price: \$ _____ Buyer # _____

Second Chance Farms Inc

Pink Hill, NC - 30 miles southeast of Goldsboro, NC

Home-Raised, GAP-4, Verified Natural, Backgrounded, Weaned**Base Weight:** 800 lbs. **Wt. Stop:** 845 lbs. **Variance:** 150 lbs.**Pickup Date:** January 9-13 **Estimated Head Count** 60**Slide/Shrink:** 1% shrink and slide \$5/cwt topside only**Weigh:** Hauled 15 miles, weighed on certified truck scales**Notice to load:** 48 hours **Weaned:** 90+ days**Colors:** 95% blk/bwf, 1-2 hd ch-x**Flesh:** Medium**Muscling:** 95% #1, 5% #1.5**Frame:** Medium**Nutrition:** Bunk fed TMR (baleage, soyhulls, wet corn gluten) with calcium and minerals and on grass lots.**Vaccinations:** Vista Once (2x), Vision 7 (2x), Multimin (1x)**Dewormer:** Synanthic (1x), Dectomax Inject (1x)**Implants:** None**Genetics:** 50-60% Angus, 40-50% Sim. Sired by SimAngus bulls from Gibbs Farms & Fred Smith out of Angus-based and SimAngus cows. Sires average in the top 15% for the Simmental Terminal Index (all top 30% or better) and average top 15% for Marbling and Yearling Weight. Genetics include Triple Crown, Mountaineer, Premier, Statement, Nighthawk, and more as well as some AI sires.**Natural Status:** GAP-4; BeefTraxx Verified Natural; NHTC; SAV; Affidavit **Heifers Open:** Guaranteed open, not palpated.**Comments:** Broke to bunks and waters. An excellent, fancy set of calves that will be ready to go in January. Calves are EID tagged and natural certifications are complete and will transfer at no cost. Last 2 years calves have averaged 95% Prime & Choice. An excellent set of feeding genetics.**MACS Rep:** Jeff Martin, 910-379-9173**Programs:**

Lot 2509 1 Load of HEIFERS

Price: \$ _____ Buyer # _____

Porter Farms

Mt Pleasant, NC - 25 miles northwest of Charlotte, NC

Home-Raised, GAP-4, Verified Natural, Backgrounded, Weaned**Base Weight:** 850 lbs. **Wt. Stop:** 885 lbs. **Variance:** 225 lbs.**Pickup Date:** December 8-16 **Estimated Head Count** 57**Slide/Shrink:** 2% shrink and slide \$5/cwt topside only**Weigh:** Certified MACS ground scales at farm**Notice to load:** 48 hours **Weaned:** 60+ days**Colors:** 45 hd blk/bwf, 15 hd Hereford**Flesh:** Medium**Muscling:** 95% #1, 5% #1.5**Frame:** Medium**Nutrition:** Bunk fed silage and commodity feed with free choice mineral, pasture, and hay.**Vaccinations:** CattleMaster One Shot (1x), Inforce 3 (1x), Vision 7 (2x)**Dewormer:** Eprinex (2x)**Implants:** None**Genetics:** Sired by Angus bulls out of Angus or AngusXHereford cows. Hereford sired by Hereford bulls out of Hereford-X cows.**Natural Status:** GAP-4; IMI Verified Natural; NHTC; SAV; Affidavit**Heifers Open:** Guaranteed open, not palpated.**Comments:** Broke to bunks and waters. Docile, fancy calves that should finish as a big set of feeders or would make a good set of replacement heifers. A very good reputational load of cattle coming from a good program. GAP certification can transfer at no cost to buyer.**MACS Rep:** Marcus Harward, 704-322-0840**Programs:****Lot 2510 1 Load of HEIFERS**

Price: \$ _____ Buyer # _____

HRW Farms #2

Thurmond, NC - 10 miles north of Elkin, NC

Home-Raised, GAP-4, Verified Natural, NHTC, Backgrounded, Weaned**Base Weight:** 900 lbs. **Wt. Stop:** 940 lbs. **Variance:** 150 lbs.**Pickup Date:** December 12-16 **Estimated Head Count** 54**Slide/Shrink:** 2% shrink and slide \$5/cwt topside only**Weigh:** Certified ground scales at farm**Notice to load:** 48 hours **Weaned:** 60+ days**Colors:** 25% blk/bwf, 75% char-x or red**Flesh:** Medium**Muscling:** 95% #1, 5% #1.5**Frame:** 90% Med, 10% Large**Nutrition:** Bunk fed 15# ph/pd of 14% feed and silage with free choice mineral and hay and on a 10 acre pasture.**Vaccinations:** Bovi-Shield Gold One Shot (1x), Bovi-Shield Gold 5 (1x), Alpha 7 (1x), Vision 7 20/20 (1x)**Dewormer:** Dectomax**Implants:** None**Genetics:** Sired by Charolais, Angus, and SimAngus bulls out of crossbred cows. All chars are crossbred with a black nose or gray/yellow, no purebred pink-noses.**Natural Status:** GAP-4; Pending Verified Natural; NHTC; SAV; Affidavit.**Heifers Open:** Guaranteed open, will be palpated.**Comments:** Broke to bunks and waters. Home-raised, high-growth heifers with Charolais and Angus genetics. Reputational calves from a very good program. GAP-4 certificate can transfer at no cost to buyer. Will be EID tagged prior to shipment if needed. (GAP#17770, Exp 3/23/23)**MACS Rep:** Marcus Harward, 704-322-0840**Programs:**

Lot 2511 0.8 Load of STRS/HFRS

Price: \$ _____ Buyer # _____

B & F Farms

Goldston, NC - 20 miles south of Siler City, NC

Home-Raised, GAP-4, Verified Natural, Backgrounded, Weaned

~39 Steers Wt: 475 lbs. Wt. Stop: 510 lbs. Variance: 150 lbs.

~47 Hfrs Wt: 425 lbs. Wt. Stop: 460 lbs. Variance: 150 lbs.

Heifers sell \$15/cwt back**Pickup Date:** December 12-20**Slide/Shrink:** 2% shrink and slide \$12/cwt topside only**Weigh:** Certified ground scales at farm**Notice:** 72 hours**Weaned:** 60+ days**Colors:** 95% blk/bwf, 5% ch-x or red**Muscling:** 90% #1, 10% #1.5**Nutrition:** Bunk fed 3# per head of 14% grower feed on fescue grass with hay and Purina mineral.**Vaccinations:** Pyramid 5 + Presponse (1x), Pyramid 5 (1x), Covexin 8 (2x)**Dewormer:** Dectomax (2x)**Implants:** None**Genetics:** 70% Angus or more. Sired by Angus bulls out of Angus-X cows.**Natural Status:** GAP-4; BeefTraxx Verified Natural; NHTC; SAV; Affidavit **Heifers Open:** Guaranteed open, not palpated.**Comments:** Broke to bunks and waters. Home-raised and all-natural. Calves have mainly just been running on grass with only a little feed and will be carrying just a grass flesh. GAP certificate will transfer at no cost to buyer (GAP#17641, Exp. 12/21/22). Will need to load two full loads first.**MACS Rep:** Marcus Harward, 704-322-0840**Flesh:** Medium**Frame:** Medium**Programs:****Lot 2512 0.9 Load of STRS/HFRS**

Price: \$ _____ Buyer # _____

Justin Collins Cattle

Woodbury, GA - 50 miles southwest of Atlanta, GA

Home-Raised, Affidavit Natural, Backgrounded, Weaned

~25 Steers Wt: 625 lbs. Wt. Stop: 665 lbs. Variance: 150 lbs.

~50 Hfrs Wt: 560 lbs. Wt. Stop: 600 lbs. Variance: 150 lbs.

Heifers sell \$10/cwt back**Pickup Date:** December 12-20**Slide/Shrink:** 2% shrink and slide \$8/cwt topside only**Weigh:** Hauled 15 miles, weighed on certified truck scales**Notice:** 72 hours**Weaned:** 75+ days**Colors:** 85% blk/bwf, 15% ch-x or red**Muscling:** 80% #1, 20% #1.5**Nutrition:** Bunk fed 5# TMR with free choice mineral, pasture, and hay**Vaccinations:** Bovi-Shield Gold 5 (2x), Ultrabac 7 (2x)**Dewormer:** Safeguard**Implants:** None**Genetics:** Sired by Charolais, Angus, & Brangus/Ultrablack bulls. Brangus cows bred to Charolais & Angus bulls; Angus & Char-X cows bred to Brangus & Ultrablack bulls. Calves carry a flick to 1/4+ ear.**Natural Status:** Seller Affidavit**Heifers Open:** Guaranteed open, not palpated.**Comments:** Broke to bunks and waters. Calves mainly on pasture and just being fed a small amount of TMR the last 60 days, carrying a medium grass flesh. Calves are all-natural and seller will sign natural affidavits.**MACS Rep:** Marcus Harward, 704-322-0840**Flesh:** Medium**Frame:** Medium**Programs:**

Lot 2513 1 Load of STRS/HFRS

Price: \$ _____ Buyer # _____

Herman Farms (Kent Herman)

Taylorsville, NC - 30 miles west of Statesville, NC

Home-Raised, Affidavit Natural, Backgrounded, Weaned**~37 Steers Wt: 625 lbs. Wt. Stop: 660 lbs. Variance: 125 lbs.****~48 Hfrs Wt: 600 lbs. Wt. Stop: 635 lbs. Variance: 125 lbs.****Heifers sell \$10/cwt back****Pickup Date:** December 12-16**Slide/Shrink:** None shrink and slide \$8/cwt topside only**Weigh:** Hauled 35 miles to HBLM, weighed on certified ground scales**Notice:** 48-72 hours **Weaned:** 90+ days**Colors:** 79 hd blk/bwf, 3 hd red/rwf, 3 hd ch-x**Muscling:** 90% #1, 10% #1.5**Nutrition:** Bunk fed a 10-15# corn silage TMR with free choice mineral, pasture, and hay**Vaccinations:** Vista Once (2x), Ultrabac 7 (2x)**Dewormer:** Dectomax Inj (2x)**Implants:** None**Genetics:** 50%+ Angus. Sired by Angus bulls out of Angus-X cows.**Natural Status:** Seller Affidavit**Heifers Open:** Guaranteed open, not palpated.**Comments:** Broke to bunks and waters. A very good split load of 6 weight calves that have been weaned for 90+ days. Seller will sign natural affidavits for the buyer if needed.**MACS Rep:** Jimmy Dagenhart, 704-425-3587**Programs:***Natural*
AFFIDAVIT**Flesh:** Medium**Frame:** Medium**Lot 2514 1 Load of STRS/HFRS**

Price: \$ _____ Buyer # _____

Rylee Farms & Cattle Co

Gillsville, GA - 20 miles north of Gainesville, GA

Home-Raised, Affidavit Natural, Backgrounded, Weaned**~41 Steers Wt: 675 lbs. Wt. Stop: 710 lbs. Variance: 175 lbs.****~31 Hfrs Wt: 650 lbs. Wt. Stop: 685 lbs. Variance: 175 lbs.****Heifers sell \$10/cwt back****Pickup Date:** December 12-16**Slide/Shrink:** 2% shrink and slide \$6/cwt topside only**Weigh:** Certified MACS ground scales at farm**Notice:** 48 hours **Weaned:** 60+ days**Colors:** 67 hd blk/bwf, 6 hd ch-x**Muscling:** 95% #1, 5% #1.5**Nutrition:** Bunk fed 8-10# of 14% Oglethorpe Grower feed with free choice Vigortone High Mag mineral, pasture, and hay**Vaccinations:** Pyramid 5 + Presponse (2x), Ultrabac 7 (1x), Bar vac 7 (1x)**Dewormer:** Cydectin, Synanthic, Cydectin**Implants:** None**Genetics:** 50%+ Angus. Sired by Angus & SimAngus bulls out of Angus-X and Char-X cows.**Natural Status:** Seller Affidavit**Heifers Open:** Guaranteed open, not palpated.**Comments:** Broke to bunks and waters. A very good split load of all-natural, backgrounded calves. Seller will sign natural affidavits for the buyer if needed and can complete GAP and Verified Natural (call rep for more details).**MACS Rep:** David Landreth, 864-444-8214**Programs:***Natural*
AFFIDAVIT**Flesh:** Medium**Frame:** Medium

Lot 2515 1 Load of STRS/HFRS

Price: \$ _____ Buyer # _____

K & A Farm (Phillip Arnold)

Union, SC - 25 miles southeast of Spartanburg, SC

Home-Raised, Verified Natural, Backgrounded, Weaned

~33 Steers Wt: 750 lbs. Wt. Stop: 790 lbs. Variance: 150 lbs.

~33 Hfrs Wt: 725 lbs. Wt. Stop: 765 lbs. Variance: 150 lbs.

Heifers sell \$8/cwt back**Pickup Date:** December 12-20**Slide/Shrink:** 2% shrink and slide \$5/cwt topside only**Weigh:** Certified MACS ground scales at farm**Notice:** 48 hours **Weaned:** 60+ days**Colors:** 97% blk/bwf, 1 hd ch-x, 1 hd red**Muscling:** 95% #1, 5% #1.5**Nutrition:** Bunk fed 33 of 13% CPC feed with free choice mineral, pasture, and hay.**Vaccinations:** Vista Once (1x), Vista 5 (1x), Vision 7 w/somnus (2x)**Dewormer:** Ivermectin **Implants:** None**Genetics:** 65%+ Angus. Sired by Angus bulls out of Angus-based cows. Yon Family Farms genetics.**Natural Status:** BeefTraxx Verified Natural; NHTC; SAV; Affidavit **Heifers Open:** Guaranteed open, not palpated.**Comments:** Broke to bunks and waters. A fancy set of verified natural calves that have been double vaccinated and weaned for 60+ days. Calves are out of very good genetics and ready to go to feed. EID tagged for verified natural and NHTC.**MACS Rep:** Marcus Harward, 704-322-0840**Programs:****Flesh:** Medium**Frame:** Medium**Lot 2516 1 Load of STRS/HFRS**

Price: \$ _____ Buyer # _____

Lazy L Land & Cattle (Mark Linkesh)

Gillsville, GA - 20 miles north of Gainesville, GA

Home-Raised, GAP-4, Verified Natural, Backgrounded, Weaned

~40 Steers Wt: 775 lbs. Wt. Stop: 810 lbs. Variance: 150 lbs.

~23 Hfrs Wt: 750 lbs. Wt. Stop: 785 lbs. Variance: 150 lbs.

Heifers sell \$8/cwt back**Pickup Date:** December 12-16**Slide/Shrink:** 2% shrink and slide \$5/cwt topside only**Weigh:** Certified MACS ground scales at farm**Notice:** 48 hours **Weaned:** 60+ days**Colors:** 61 hd blk/bwf, 2 hd red/rwf**Muscling:** 95% #1, 5% #1.5**Nutrition:** Bunk fed 12# of 14% Oglethorpe Grower 3 feed with free choice VitaFerm Gain Smart mineral, pasture, and hay**Vaccinations:** Pyramid 5 + Presponse (2x), Vision 7 w/somnus (2x)**Dewormer:** Eprinex (1x) **Implants:** None**Genetics:** 50-75%+ Angus. Sired by Angus bulls and out of Angus and SimAngus cows.**Natural Status:** GAP-4; BeefTraxx Verified Natural; NHTC; SAV; Affidavit **Heifers Open:** Guaranteed open, not palpated.**Comments:** Broke to bunks and waters. A excellent set of reputational calves that have a lot of growth in them and qualify as all-natural with certifications. GAP certificate transfers at no cost to buyer. (GAP#17314; Exp. 3/25/23)**MACS Rep:** David Landreth, 864-444-8214**Programs:****Flesh:** Medium**Frame:** Medium

Lot 2517 1 Load of STRS/HFRS

Price: \$ _____ Buyer # _____

Meadow Lane Beef LLC

Louisburg, NC - 30 miles northeast of Raleigh, NC

Home-Raised, GAP-4, Verified Natural, Backgrounded, Weaned, AngusLink

~50 Steers Wt: 785 lbs. Wt. Stop: 825 lbs. Variance: 200 lbs.

~15 Hfrs Wt: 750 lbs. Wt. Stop: 790 lbs. Variance: 150 lbs.

Heifers sell \$6/cwt back

Pickup Date: ASAP - December 9-13

Slide/Shrink: 2% shrink and slide \$5/cwt topside only

Weigh: Hauled 5 miles, weighed on certified truck scales

Notice: 48 hours Weaned: 60+ days

Colors: 85% blk/bwf, 15% ch-x or red

Muscling: 95% #1, 5% #1.5

Nutrition: Bunk fed TMR (ground oat hay, cottonseed, brewers grain, soybean meal, mineral) with free choice pasture and hay

Vaccinations: Inforce 3 (1x), ViraShield 6+L5 HB (1x), Ultrabac 7 (2x)

Dewormer: Cydectin Inject.

Implants: None

Genetics: 65%+ Angus. Sired by Yon Family Farms Angus bulls out of Angus-based or SimAngus-X cows.

Natural Status: GAP-4, AngusLink NeverEver 3; NHTC; SAV; Affidavit Heifers Open: Guaranteed open, not palpated.

Comments: Broke to bunks and waters. An excellent, fancy set of calves ready to go to feed. All steers were knife cut. BQA Certified, instructor since 1990. GAP certificate can transfer at no cost to buyer. AngusLink certified and EID tagged. Calves have a Genetic Merit Beef Score of 125 indicating majority of cattle should grade as High Choice or Prime. An excellent load of reputational cattle.

MACS Rep: Jeff Martin, 910-379-9173

Programs:

Natural
AFFIDAVITglobal animal
PARTNERSHIPANGUSLINK
VALUE ADDED PROGRAMS

NHTC

USDA
NATURAL
VERIFIED

zoetis

YON
FAMILY FARMS

Quality That Counts



Flesh: Medium

Frame: Medium

BEEF SCORE	
125	
FEEDLOT PERFORMANCE SCORE	GRID SCORE
119	125

Lot 2518 0.4 Load of HEIFERS

Price: \$ _____ Buyer # _____

Meadow Lane Beef LLC

Louisburg, NC - 30 miles northeast of Raleigh, NC

Home-Raised, GAP-4, Verified Natural, Backgrounded, Weaned, AngusLink

Base Weight: 730 lbs. Wt. Stop: 770 lbs. Variance: 150 lbs.

Pickup Date: ASAP - December 9-13 Estimated Head Count 25

Slide/Shrink: 2% shrink and slide \$5/cwt topside only

Weigh: Hauled 5 miles, weighed on certified truck scales

Notice to load: 48 hours Weaned: 60+ days

Colors: 85% blk/bwf, 15% ch-x or red

Muscling: 95% #1, 5% #1.5

Nutrition: Bunk fed TMR (ground oat hay, cottonseed, brewers grain, soybean meal, mineral) with free choice pasture and hay

Vaccinations: Inforce 3 (1x), ViraShield 6+L5 HB (1x), Ultrabac 7 (2x)

Dewormer: Cydectin Inject.

Implants: None

Genetics: 65%+ Angus. Sired by Yon Family Farms Angus bulls out of Angus-based or SimAngus-X cows.

Natural Status: GAP-4, AngusLink NeverEver 3; NHTC; SAV; Affidavit Heifers Open: Guaranteed open, not palpated.

Comments: Broke to bunks and waters. An excellent, fancy set of calves ready to go to feed. BQA Certified, instructor since 1990. GAP certificate can transfer at no cost to buyer. AngusLink certified and EID tagged. Calves have a Genetic Merit Beef Score of 125 indicating majority of cattle should grade as High Choice or Prime. An excellent group of reputational cattle. Approximately 18,000#.

MACS Rep: Jeff Martin, 910-379-9173

Programs:

Natural
AFFIDAVITglobal animal
PARTNERSHIPANGUSLINK
VALUE ADDED PROGRAMS

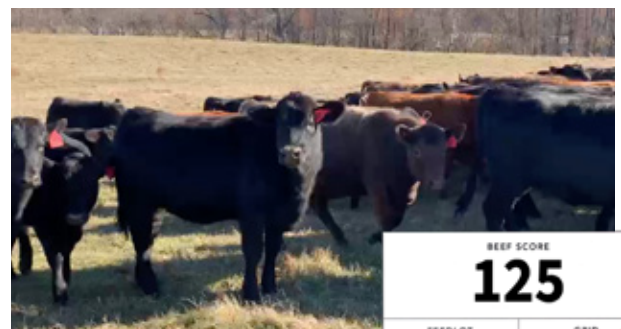
NHTC

USDA
NATURAL
VERIFIED

zoetis

YON
FAMILY FARMS

Quality That Counts



Flesh: Medium

Frame: Medium

BEEF SCORE	
125	
FEEDLOT PERFORMANCE SCORE	GRID SCORE
119	125

Lot 2519 1 Load of STRS/HFRS

Price: \$ _____ Buyer # _____

Falling Creek Cattle Co (Manfred & Braxton Hood)

Grantham, NC - 14 miles SW of Goldsboro, NC; 50 miles SE of Raleigh, NC

Purchased Locally, Backgrounded, Weaned**~31 Steers Wt: 800 lbs. Wt. Stop: 825 lbs. Variance: 150 lbs.****~31 Hfrs Wt: 790 lbs. Wt. Stop: 815 lbs. Variance: 150 lbs.****Heifers sell \$8/cwt back****Pickup Date:** December 17-20**Slide/Shrink:** 2% shrink and slide \$5/cwt topside only**Weigh:** Hauled 10 miles, weighed on the truck on certified scales**Notice:** 48 hours **Weaned:** 150+ days**Colors:** 60 hd blk/bwf, 1 hd ch-x, 1 hd red**Muscling:** 95% #1, 5% #1.5**Nutrition:** Bunk fed TMR (corn silage, cotton seed, chopped hay) with mineral.**Vaccinations:** Bovi-Shield Gold One Shot (1x), Inforce 3 (1x), One Shot BVD (1x)**Dewormer:** Ivermec (1x), Safeguard (1x), Cydectin (1x) **Implants:** None**Genetics:** Commercial Angus-based.**Natural Status:** No**Heifers Open:** Guaranteed open, not palpated.**Comments:** Broke to bunks and waters. Docile. Purchased from local producers as 4-weights and weaned and backgrounded for over 150 days. Fancy steers and heifers ready to go on feed.**MACS Rep:** Jeff Martin, 910-379-9173**Programs:****zoetis****Flesh:** Medium**Frame:** Medium

Cattle that are picked up after the stated delivery dates will be subject to a 2# per day increase on the base weight and any weight stops for each day late after the last stated delivery date.

14TH ANNUAL SELECT BULL & FEMALE SALE

HOSTED BY EBS FARMS

JANUARY 7, 2023

NORWOOD, NC • 12:00 PM EST

Stanly County Livestock Market • Complimentary Angus Chili lunch served at 11:00 am



SELLING
50 BULLS

70+ FEMALES
Registered Angus
& Commercial
females will sell!



Top 1% Claw & Hair Shed EPDs!

EBS STELLAR 213

20338634

SIRE: SITZ STELLAR 726D

MGS: KCF BENNETT SOUTHSIDE

CED	+7
BW	+0.4 35%
WW	+88 2%
YW	+158 2%
CW	+74 4%
MRB	+91 20%
\$W	+86 1%
\$B	+179 10%
\$C	+309 3%



Loaded with growth & power!

EBS POWER 260

20338720

SIRE: VAR POWER FORWARD 9111

MGS: WR JOURNEY-1X74

CED	+2
BW	+3.2
WW	+87 3%
YW	+167 7%
CW	+82 2%
MRB	+53
\$W	+71 15%
\$B	+189 3%
\$C	+312 3%



Calving-ease, high marbling, and top 5% \$C!

EBS QUANTUM 220

20338669

GAR QUANTUM X SYDGEN ENHANCE

CED +8 | BW +2 | MARB +1.18 | \$B +179 | \$C +300



Top 10% \$W, \$B, and \$C!

EBS QUANTUM 253

20338710

GAR QUANTUM X SYDGEN CC&7

WW +83 | YW +145 | \$W +77 | \$B +179 | \$C +300



Top 3% \$B and top 2% \$C!

EBS CC&7 876-271

20337898

EBS CC&7 074-876 X JINDRA ACCLAIM

YW +136 | CW +73 | MARB +.85 | \$B +192 | \$C +323

PERFORMANCE TESTED BULLS

Complete AHIR Performance Records • DNA Genomic Tested with Genomic-Enhanced EPDs • Ultrasound Data Provided
Breeding Soundness Guaranteed • BVD-PI Tested Negative • Complete Herd Health Vaccination Program

WE STAND BEHIND OUR BULLS 100%!

VIEW SALE BOOK ONLINE OR CONTACT BRUCE TO RECEIVE A COPY



EBS FARMS • BRUCE & CARLA SHANKLE
704-694-8686 • 704-826-8848
EBSFARMS@WINDSTREAM.NET

Bulls are available to view prior to the sale at 3655 Plank Rd. Wadesboro, NC

DVAuction
Broadcasting Real-Time Auctions

Online bidding, sale book,
& videos available at
WWW.DVAUCTION.COM



To view the sale or bid online, visit www.DVAuction.com. Find the "Mid-Atlantic Cattle Sales (Richfield, NC)" sale and click on "Details." From this page you can view the catalog, videos, or log in to watch the sale. If you have an account, log in and view the sale. If you do not, you must create an account under the "Create New Account" tab in the upper left hand corner of the screen. You will need to confirm this account through your e-mail.

You DO NOT have to be approved for a buyer's number just to watch the sale but you will still need to create an account with DVAuction.



Mid-Atlantic Cattle Sales, LLC
28978 Misenheimer Rd. Richfield, NC 28137
info@macsvideo.com • www.MACSvideo.com

**Bonded through USDA Packers & Stockyards*

MID-ATLANTIC CATTLE SALES

WWW.MACSVIDEO.COM



UPCOMING SALES

January 3, 2023

January 17, 2023

February 7, 2023

February 21, 2023

March 7, 2023

March 21, 2023

Our motto - Working hard for you today and every day!

MACS Sale Terms and Conditions

1. Each bidder must be pre-registered and have a Buyer Number to participate in the auction. To register for the auction call 704-322-9770 or register through DV Auction. By participating in the auction the Buyer expressly agrees to adhere to these Terms and Conditions and to the provisions set forth in the Livestock Purchase Agreement sent after the auction. All cattle being offered for sale are under standard Contracts for Sale. All cattle are purchased under standard Contracts for Purchase by the Buyers.
2. The cattle offered for sale are indicated on the sale sheets or online sale description as described to the MACS representatives by the owner. They are described by lot numbers, seller, location of cattle, numbers of head, estimated weight, management practices, delivery date, conditions of sale and delivery, and verified programs. Representatives for each load are listed under each respective lot. Every effort has been made to assure the correctness of this information but all announcements from the auctioneer or official auction staff prior to or during the sale shall take precedence over printed matter herein.
3. Auction bids will be taken as voice bids by telephone and in person or online bids through DV Auction. Bids are asked with each lot of cattle and will be sold to the highest bidder on the basis of estimated weight. Seller reserves the right to "no sale" the load lot(s) of his cattle at the time the highest bid is made as long as the "no sale" announcement is made prior to the next lot being sold. Any departure from this procedure will be announced and all announcements made from the auctioneer or official auction staff will take precedence over printed matter herein.
4. The Auctioneer reserves the right to reject any and all bids. Auctioneer will settle all disputed bids. If a dispute arises between two or more bidders, the Auctioneer may immediately put the lot up for sale again and resell to the highest bidder. The decision of the Auctioneer shall be final and absolute.
5. One full load of stocker or feeder cattle will be contracted for approximately 48,000 lbs. and the respective head count at the base weight at the full truckload weight. No freight adjustment will be given if the average weight at delivery is under the base weight and the head count delivered is within 95% of the contracted head count. Mid-Atlantic Cattle Sales and its representatives will act as agents only in the sale of lots of cattle. As the marketing agency we cannot guarantee a minimum or maximum amount of shrink on any load. Any weight guarantees in regards to shrink must be given by Seller. Mid-Atlantic Cattle Sales cannot guarantee off truck weights.
6. Cattle that are picked up after the stated delivery dates will be subject to a 2# per head per day increase on the base weight and any weight stops for each day late after the last stated delivery date.
7. Most loads have weight stops at 25-50 lbs. over the base weight. The individual weight stops are posted on each lot. All cattle will be sold on a sliding scale as listed on each load.
8. On split loads the heifer price will be \$___/cwt (as stated in the lot information) back of the original price of the steers.
9. The Buyer is responsible for all arrangements and regulatory requirements with respect to the transportation of the livestock and the Buyer is responsible for sending trucks to adequately load the number of head and/or the total weight contracted in order to legally transport them to their final destination. Cattle sold will be sorted and delivered to the stated weigh point by the Seller and weighed on a certified scale. Buyer will receive the cattle at point of weighing under conditions as stated with respect to each lot. Buyer will take ownership of the cattle at the point of loading.
10. Health entry requirements for the state of entry are the responsibility of the Buyer. The Seller will furnish any health certificates required for the state of origin and Federal Law at the request of the buyer. If additional health certificates, documentation or tests are required for shipment to the Buyer's destination, it shall be at the Buyer's request and expense.
11. Any heifer that is sold as guaranteed open and is determined to be bred by the buyer will receive a \$200 per bred heifer refund given appropriate documentation is provided within 60 days of the cattle being delivered. Documentation must include lot information, heifer identification, and veterinarian documentation.
12. Payment by Buyer is due and payable in accordance with USDA P&S prompt pay policy upon delivery of the cattle and at such times as the value of the cattle is determined based on weight (subject to condition), price (subject to condition), and any other conditions stated at time of sale. Payment must be sent to Mid-Atlantic Cattle Sales within 1 day after the cattle are received by the Buyer. We request that all payments be sent by Wire Transfer, ACH, or overnight delivery of a check via FedEx or UPS. Payment sent via the U.S. Postal Service (1st Class or Priority Mail) are expected to be received within 7 business days of delivery. Any fees incurred for sending payment will be at the Buyer's expense.
13. Mid-Atlantic Cattle Sales does not warrant the harvest date on source and age verified cattle and cannot guarantee back verification on any program requiring signed affidavits or 3rd party verification. Mid-Atlantic Cattle Sales will make all efforts to ensure verifications are met, but it is the Buyer's responsibility to verify all claims of the Seller to fit specific programs prior to purchase.
14. There are no implied warranties of merchantability or fitness for a particular purpose on any livestock sold. Seller does not warrant that the livestock are free from any latent defect, condition, sickness, or disease. Seller does not assume responsibility for any loss after the livestock are delivered, which results from any latent defect, condition, sickness, or disease.



Marcus Harward: 704-322-0840

Brooke Harward: 704-322-9770

Jeff Martin: 910-379-9173

info@macsvideo.com

www.MACSVideo.com

28978 Misenheimer Rd • Richfield, NC 28137