



MID-ATLANTIC CATTLE SALES

*A family owned and operated livestock video auction
with 30+ years of livestock marketing experience.*

MAY 6, 2025

TUESDAY AT 1:00 PM EST

WWW.MACSVIDEO.COM



Mid-Atlantic Cattle Sales, LLC
28978 Misenheimer Rd. Richfield, NC 28137
704-322-0840 • 704-322-9770
info@macsvideo.com

DVAuction
Broadcasting Real-Time Auctions

Video Sale INFORMATION

The cattle offered for sale are indicated on the following sale sheets and the online sale description as described to the MACS representatives by the owner. They are described by lot numbers, seller, location of cattle, numbers of head, estimated weight, management practices, delivery date, conditions of sale and delivery, and verified programs. Representatives for each load are listed under each respective lot. Every effort has been made to assure the correctness of this information but all announcements from the auctioneer or official auction staff prior to or during the sale shall take precedence over printed matter herein.

SALE DATE & TIME:

Tuesday - May 6, 2025

1:00 pm est. | 12:00 pm cst.

CONTACT:

Marcus Harward704-322-0840

Brooke Harward704-322-9770

www.MACSvideo.com

View catalog, videos, and additional updates online.

www.vimeo.com/macsvideo

All videos of sale cattle are posted directly on our video page listed above and on DV Auction

***MACS Sale Terms and Conditions are listed in this catalog and online. All loads will sell under these terms and conditions.**

Bidding Options

We want to offer you the best opportunities we can to participate in our sales each month.
Below are three options for bidding on the sale.

1. CONFERENCE CALL

After 12:45 eastern on sale day, you can call the auction number to listen and bid on the sale. To bid during the sale, you will use your buyer number to bid on the lot. Contact Marcus or Brooke prior to the sale to receive a buyer's number. *Please keep background noise to a minimum as we will have multiple people on the line. To mute your phone, press *1. To un-mute, press *1 again.*

CALL-IN NUMBER: 1-866-906-9888

PASSCODE: 9461720 #



2. DV AUCTION - INTERNET VIEWING AND BIDDING

To view the sale or bid online, visit www.DVAuction.com. Find the "Mid-Atlantic Cattle Sales (Richfield, NC)" sale and click on "Details." From this page you can view the catalog, videos, or log in to watch the sale. If you have an account, log in and view the sale. If you do not, you must create an account under the "Create New Account" tab in the upper left hand corner of the screen. You will need to confirm this account through your e-mail. *It is best to do this at least a day before the sale.*

You DO NOT have to be approved just to watch the sale but you will still need to create an account with DVAuction. To register for a buyer's number, call Brooke at 704-322-9770 prior to the sale to be approved to bid online.

3. ABSENTEE BIDDING

For people who can not view or bid on the sale at sale time, we have can handle closed bids in house and assist you with absentee bidding. Contact Marcus at 704-322-0840 for more information.

"Jesus says, "I am the resurrection and the life. Whoever believes in me, though they die, yet they shall live, and everyone who lives and believes in me will never die"

JOHN 11:25-26



LOT SUMMARY

TUESDAY, MAY 6, 2025

Video Sale Information	Pg 2
Table of Contents / Lot Summary	Pg 3

LOT NUMBER	LOAD NUMBER	TYPE	BASE WT.	PRODUCER	STATE	DELIVERY	PAGE NUMBER
Lot 5138	1 Load	Steers	750 lbs.	Lyavans Lowry	NC	May 12-16	Pg 4
Lot 5139	1 Load	Steers	775 lbs.	Howey Ranch *GAP VNB NHTC	SC	May 12-16	Pg 4
Lot 5140	2 Loads	Steers	800 lbs.	Donald Chriscoe Farm *	NC	May 12-16	Pg 5
Lot 5141	1 Load	Steers	815 lbs.	Hemric Farms *GAP VNB NHTC	NC	May 12-16	Pg 5
Lot 5142	0.5 Load	Steers	825 lbs.	2C Cattle	NC	May 12-16	Pg 6
Lot 5143	0.5 Load	Steers	825 lbs.	Randy Ratliff	NC	May 12-16	Pg 6
Lot 5144	1 Load	Steers	855 lbs.	Rocking H Cattle Co *GAP CARE VNB NHTC	NC	May 7-16	Pg 7
Lot 5145	1 Load	Steers	850 lbs.	Falling Creek Cattle Company	NC	May 12-16	Pg 7
Lot 5146	1 Load	Steers	990 lbs	Stephenson Farm *	SC	May 12-16	Pg 8
Lot 5147	1 Load	Steers	925 lbs.	Timberland Farms *VNB NHTC	GA	May 19-23	Pg 8
Lot 5148	1 Load	Steers	1010 lbs.	Timberland Farms *VNB NHTC	GA	May 12-16	Pg 9
Lot 5149	1 Load	Steers	1100 lbs.	Timberland Farms *VNB NHTC	GA	May 12-16	Pg 9
Lot 5150	1 Load	Holsteins	1000 lbs.	Stephenson Farm	SC	May 12-16	Pg 10
Lot 5151	1 Load	Heifers	700 lbs.	Howey Ranch *GAP VNB NHTC	SC	May 12-16	Pg 10
Lot 5152	1 Load	Heifers	765 lbs.	Rocky River Ranch *	NC	May 12-16	Pg 11
Lot 5153	1 Load	Heifers	815 lbs.	Hemric Farms *GAP VNB NHTC	NC	May 12-16	Pg 11
Lot 5154	1 Load	Heifers	830 lbs.	Donald Chriscoe Farm *	NC	May 12-16	Pg 12
Lot 5155	1 Load	Heifers	825 lbs.	Randy Ratliff	NC	May 12-16	Pg 12
Lot 5156	1 Load	Heifers	875 lbs.	Randy Ratliff	NC	May 12-16	Pg 13
Lot 5157	1 Load	Heifers	875 lbs.	B & D Farms *GAP VNB NHTC	SC	May 12-16	Pg 13
Lot 5158	1 Load	Heifers	890 lbs.	Rocking H Cattle Co *GAP CARE VNB NHTC	NC	May 7-16	Pg 14
Lot 5159	1.9 Load	Heifers	985 lbs.	Timberland Farms *VNB NHTC	GA	May 12-16	Pg 14
Lot 5160	0.9 Load	Steers Heifers	775 lbs. 775 lbs.	H & B Cattle Company *	SC	May 12-16	Pg 15
Lot 5161	1.1 Load	Steers Heifers	1100 lbs. 935 lbs.	Timberland Farms *VNB NHTC <i>Sired by Wagyu Bulls - Oversized load</i>	GA	May 19-23	Pg 15

Upcoming Video Sale Dates	Pg 16
DV Auction Information	Pg 17
MACS Sale Terms & Conditions	Pg 18-19

* = Affidavit Natural GAP= GAP Certified VNB= Verified Natural
 NHTC= Non-Hormone Treated CARE= BeefCARE Certified

Lot 5138 1 Load of STEERS

Price: \$ _____ Buyer # _____

Lyavans Lowry
Pembroke, NC - 40 miles southwest of Fayetteville, NC

Backgrounded, Weaned

Base Weight: 750 lbs. Wt. Stop: 790 lbs. Variance: 150 lbs.

Pickup Date: May 12-16 **Estimated Head Count** 65

Slide/Shrink: 2% shrink and slide \$14/cwt topside only

Weigh: Hauled 10 miles, weighed on the truck on certified scales

Notice to load: 72 hours **Weaned:** 120+ days

Colors: 63 hd blk/bwf, 2 hd ch-x

Muscling: 90% #1, 10% #1.5

Nutrition: Bunk fed rolled oats by hand daily with rye pasture and triticale and Purina lick tubs with mineral.

Vaccinations: Vista Once (1x), Vision 7 somnus (1x)

Dewormer: Dectomax, Safeguard **Implants:** None

Genetics: Commercial Angus-based. 20 head of home-raised cattle sired by URF Angus bull.

Programs: No

Comments: Broke to bunks and waters. A very good set of growthy steers that have not been pushed hard. 50 head were purchased as Mac-Vac vaccinated cattle last fall and 20 head are off of Lyavans cow herd that were weaned in January and all have been running together since January. They were vaccinated early April with Vista Once and Vision 7 and have not been pushed hard, mainly on pasture. 70 head to sort, will pull a couple of the small and bigger ones off from the video.

MACS Rep: Mark Wilburn, 336-465-2417

Programs:



Flesh: Medium

Frame: Medium

Lot 5139 1 Load of STEERS

Price: \$ _____ Buyer # _____

Howey Ranch (Frank Howey)
Mount Croghan, SC - 40 miles southeast of Charlotte, NC

Home-Raised, GAP-4, Verified Natural, NHTC, Backgrounded, Weaned

Base Weight: 775 lbs. Wt. Stop: 825 lbs. Variance: 175 lbs.

Pickup Date: May 12-16 **Estimated Head Count** 61

Slide/Shrink: No shrink and slide \$12/cwt topside only

Weigh: Hauled 30 miles to Norwood, weighed on certified ground scales

Notice to load: 72 hours **Weaned:** 75+ days

Colors: 60% blk/bwf, 20% red/rwf, 20% ch-x

Muscling: 95% #1, 5% #1.5

Nutrition: 10-12# ph/pd of 12% pellet feed with free choice pasture, hay, and VitaFerm GainSmart minerals and stress tubs.

Vaccinations: Vista Once (1x), Vista 5 (1x), Vision 7 20/20 spur (2x), VitaCharge Drench

Dewormer: Cydectin, Safeguard **Implants:** None

Genetics: 50% or more Angus. Primarily sired by Red Angus and Angus bulls with a few SimAngus bulls. Bulls from Bieber, Pieper, EBS, and Black Grove. Out of Angus-based and crossbred cows. ~5-10% will show 1/16 to 1/4 of Brahman influence.

Programs: GAP-4; IMI Verified Natural; NHTC; Source & Age; Seller Affidavit

Comments: Broke to bunks and waters. A very good set of high-growth steers that will finish as a big set of feeders. Calves are out of excellent Red Angus and Angus genetics in both the bulls and cows. Calves have been on the VitaFerm program with minerals, drench, and stress tubs. They are all natural and can be EID tagged for verified natural and NHTC with IMI Global. The GAP-4 certificate can transfer at no cost to buyer. (GAP#24858, Exp 3/21/26)

MACS Rep: Marcus Harward, 704-322-0840; Chuck Doolittle, 704-221-1447

Programs:



Flesh: Medium

Frame: 95% Medium, 5% Large

Lot 5140 2 Loads of STEERS

Price: \$ _____ Buyer # _____

Donald Chriscoe Farm
Asheboro, NC - 40 miles south of Greensboro, NC

Affidavit Natural, Backgrounded, Weaned

Base Weight: 800 lbs. Wt. Stop: 835 lbs. Variance: 150 lbs.

Pickup Date: May 12-16 **Estimated Head Count** 121
Slide/Shrink: 2% shrink and slide \$12/cwt topside only
Weigh: Certified ground scales at farm
Notice to load: 24-48 hours **Weaned:** 120+ days
Colors: 90% (109 hd) blk/bwf, 10 hd ch-x, 2 hd red
Muscling: 95% #1, 5% #1.5
Nutrition: Bunk fed haylage and TMR (wet corn gluten, cotton) with access to mineral and hay.
Vaccinations: Vista 5 (2x), Nuplura (1x), Vision 7 20/20 (1x), Ocuguard Pinkeye (1x)
Dewormer: Ivomec Inject. (2x) **Implants:** None
Genetics: Commercial Angus-based. Mainly sired by Angus and SimAngus bulls.
Programs: Seller Affidavit
Comments: Broke to bunks and waters. Reputational calves purchased from local producers and backgrounded at Chriscoe's for 120+ days. Owner affidavit natural - signed natural affidavits from original producers that will transfer with the cattle.
MACS Rep: Marcus Harward, 704-322-0840



Flesh: Medium
Frame: Medium



Lot 5141 1 Load of STEERS

Price: \$ _____ Buyer # _____

Hemric Farms (Van Hemric)
Ronda, NC - 40 miles northwest of Statesville, NC

Home-Raised, GAP-4, Verified Natural, NHTC, Backgrounded, Weaned, BQA Cert

Base Weight: 815 lbs. Wt. Stop: 855 lbs. Variance: 150 lbs.

Pickup Date: May 12-16 **Estimated Head Count** 60
Slide/Shrink: 2% shrink and slide \$10/cwt topside only
Weigh: Certified ground scales at farm
Notice to load: 48 hours **Weaned:** 90+ days
Colors: 96% blk/bwf, 2 hd ch-x/smoke
Muscling: 95% #1, 5% #1.5
Nutrition: Bunk fed TMR of corn silage, DDGs, hay, and mineral.
Vaccinations: Pyramid 5 Presponse (1x), Nasalgen 3 (1x), Triangle 10 (1x), Covexin 8 (2x), Pinkeye (1x)
Dewormer: Cydectin (2x) **Implants:** None
Genetics: 50-75% Angus. Sired by purebred Angus bulls out of predominantly Angus-based cows.
Programs: GAP-4; BeefTraxx Verified Natural; NHTC; Source & Age; Seller Affidavit
Comments: Broke to bunks and waters. A fancy set of verified natural, GAP steers that are high percentage Angus, double vaccinated, weaned over 90 days. GAP-4 certificate can transfer at no cost to buyer (GAP#22553; Exp 5/27/25). Can also be EID tagged for verified natural and NHTC through BeefTraxx. There may be 1-2 with a blue eye.
MACS Rep: Marcus Harward, 704-322-0840; Jimmy Dagenhart, 704-425-3587



Flesh: Medium
Frame: Medium



Lot 5142 0.5 Load of STEERS

Price: \$ _____ Buyer # _____

2C Cattle (Dale Casstevens)
Mt Airy, NC - 35 miles northwest of Winston-Salem, NC

Backgrounded, Weaned

Base Weight: 825 lbs. **Wt. Stop:** 865 lbs. **Variance:** 150 lbs.

Pickup Date: May 12-16 **Estimated Head Count** 30

Slide/Shrink: 2% shrink and slide \$10/cwt topside only

Weigh: Hauled 10 miles, weighed on truck (Flying J, I-77, exit 100)

Notice to load: 48-72 hours **Weaned:** 150+ days

Colors: 29 hd blk/bwf, 1 hd ch-x

Muscling: 95% #1, 5% #1.5

Nutrition: Bunk fed TMR of corn, corn gluten, gin trash with free choice mineral, pasture, and hay.

Vaccinations: Titanium 5 (1x), Inforce 3 (1x), Ultrabac 8 (2x), Mycoplasma (1x)

Dewormer: LongRange (1x) **Implants:** Yes (1x)

Genetics: Commercial Angus-based.

Programs: No

Comments: Broke to bunks and waters. Yearling steers that were purchased, vaccinated on a good herd health plan, and backgrounded for at least 150 days here. A partial load of 30 head at about 25,000 lbs.

MACS Rep: Jimmy Dagenhart, 704-425-3587

Programs:   



Flesh: Medium

Frame: Medium

Lot 5143 0.5 Load of STEERS

Price: \$ _____ Buyer # _____

Randy Ratliff
Marshville, NC - 20 miles southeast of Charlotte, NC

Backgrounded, Weaned

Base Weight: 825 lbs. **Wt. Stop:** 865 lbs. **Variance:** 150 lbs.

Pickup Date: May 12-16 **Estimated Head Count** 27

Slide/Shrink: 2% shrink and slide \$10/cwt topside only

Weigh: Certified MACS ground scales at farm

Notice to load: 48-72 hours **Weaned:** 150+ days

Colors: 77% blk/bwf, 5% ch-x, 18% red/rwf (1 with ear)

Muscling: 95% #1, 5% #1.5

Nutrition: Bunk fed TMR (corn silage, ground corn, cotton seed) with free choice hay and mineral on 10 acre grass lots.

Vaccinations: Vista Once (2x), Vista 5 (1x), Cavalry 9 (1x), Endovac (1x)

Dewormer: Safeguard (2x), Ivermectin Pour-On (1x) **Implants:** None

Genetics: Commercial Angus-based.

Programs: No

Comments: Broke to bunks and waters. Purchased late last fall, double vaccinated, and backgrounded together for over 150 days. There are 27 head for a total of about 22,000 lbs.

MACS Rep: Chuck Doolittle, 704-221-1447

Programs:   



Flesh: Medium

Frame: Medium

Lot 5144 1 Load of STEERS

Price: \$ _____ Buyer # _____

Rocking H Cattle Company
Norwood, NC - 40 miles east of Charlotte, NC

Home-Raised, GAP-4, CARE, Verified Natural, NHTC, Backgrounded, Weaned

Base Weight: 855 lbs. **Wt. Stop:** 890 lbs. **Variance:** 175 lbs.

Pickup Date: May 7-16 **Estimated Head Count** 57

Slide/Shrink: 2% shrink and slide \$10/cwt topside only

Weigh: Certified ground scales at farm

Notice to load: 48 hours **Weaned:** 120+ days

Colors: 93% blk/bwf, 2 hd rwf, 2 hd ch-x

Muscling: 90% #1, 10% #1.5

Nutrition: Bunk fed TMR of oat silage, ground hay, soyhulls, wet corn gluten, whole corn, and mineral mixed in ration.

Vaccinations: Vista Once (2x), Vista 5 (1x), Vision 7 (1x), Vision 7 somnus (1x) (last shots given March 27th)

Dewormer: Safeguard (2x), Longrange (1x) **Implants:** None

Genetics: 50-75% Angus. Sired by Angus & SimAngus bulls from EBS Farms and Harward Sisters out of Angus-X (Sim or Char) cows.

Programs: GAP-4; BeefCare; IMI Verified Natural; NHTC; Source & Age; Affidavit

Comments: Broke to bunks and waters. BQA Certified. A very good set of late fall & winter born steers with several years of high-performing genetics. Past years these calves have finished out as high percentage Choice and Prime. Natural certifications are able to transfer at no cost to the buyer. (GAP recert. pending). Have had three rounds of vaccinations. **CARE certified and Rocking H has not previously or are currently involved in selling any carbon credits.

MACS Rep: Marcus Harward, 704-322-0840



Flesh: Medium

Frame: Medium

Lot 5145 1 Load of STEERS

Price: \$ _____ Buyer # _____

Falling Creek Cattle Co
Grantham, NC - 50 miles southeast of Raleigh, NC

Purchased Locally, Backgrounded, Weaned

Base Weight: 850 lbs. **Wt. Stop:** 885 lbs. **Variance:** 150 lbs.

Pickup Date: May 12-16 **Estimated Head Count** 57

Slide/Shrink: 2% shrink and slide \$10/cwt topside only

Weigh: Hauled 10 miles, weighed on the truck on certified scales

Notice to load: 48 hours **Weaned:** 150+ days

Colors: 95% blk/bwf, 1 hd ch-x, 2 hd red

Muscling: 95% #1, 5% #1.5

Nutrition: Bunk fed TMR (corn silage, cotton seed, chopped hay) with mineral.

Vaccinations: Vista Once (1x), Vista 5 (1x), Vision 7 20/20 (2x)

Dewormer: Ivermec (1x), Safeguard (1x), Cydectin (1x) **Implants:** None

Genetics: Commercial Angus-based.

Programs: No

Comments: Broke to bunks and waters. Docile. Purchased from local producers as 4-weights and weaned and backgrounded for over 150 days. A good load of steers ready to go on feed carrying just a medium flesh. May be 1-2 with a blue eye.

MACS Rep: Jeff Martin, 910-379-9173



Flesh: Medium

Frame: Medium

Lot 5146 1 Load of STEERS

Price: \$ _____ Buyer # _____

Stephenson Farm (Ron Stephenson)
Chester, SC - 45 miles southwest of Charlotte, NC

Home-Raised, Affidavit Natural, Backgrounded, Weaned



Base Weight: 990 lbs. Wt. Stop: 1030 lbs. Variance: 150 lbs.

Pickup Date: May 12-16 **Estimated Head Count** 49

Slide/Shrink: 2% shrink and slide \$10/cwt topside only

Weigh: Hauled 5 miles, weighed on the truck on certified scales

Notice to load: 48-72 hours **Weaned:** 150+ days

Colors: 94% blk/bwf, 4% ch-x, 2% red

Flesh: Medium

Muscling: 95% #1, 5% #1.5

Frame: Medium

Nutrition: No feed - on small grain pasture with free choice mineral and hay.

Vaccinations: Bovi-Shield Gold 5 (2x), Presponse (1x), Ultrabac 7 (2x), Pinkeye (1x)

Dewormer: Safeguard, Ivomec **Implants:** None

Genetics: 50%+ Angus. Sired by Tokeena Angus bulls and out of predominantly Angus-X cows and some Char-X or red cows.

Programs: Seller Affidavit

Comments: Broke to waters. A fancy set of steers that have been backgrounded on just pasture, no feed. Carrying just a medium flesh, an excellent set of steers ready to go to feed. Will sign buyer's natural affidavits. May be a couple with blue eyes and scurs or tipped horns.

MACS Rep: Chuck Doolittle, 704-221-1447

Programs:   

Lot 5147 1 Load of STEERS

Price: \$ _____ Buyer # _____

Timberland Farms (Will Tanner)
Wrightsville, GA - 70 miles southwest of Augusta, GA

Home-Raised, Verified Natural, EID Tagged, Backgrounded, Weaned, BQA Certified



Base Weight: 925 lbs. Wt. Stop: 965 lbs. Variance: 175 lbs.

Pickup Date: May 19-23 **Estimated Head Count** 52

Slide/Shrink: 2% shrink and slide \$10/cwt topside only

Weigh: Hauled 10 miles, weighed on the truck on certified scales

Notice to load: 72 hours **Weaned:** 240+ days

Colors: 80% blk/bwf, 15% ch-x/smoke, 5% red/rwf

Flesh: Medium

Muscling: 95% #1, 5% #1.5

Frame: 50% Medium, 50% Large

Nutrition: Bunk fed 8# of corn silage twice a week and grazing rye grass and oats with free choice mineral.

Vaccinations: Bovi-Shield Gold 5 (2x), One Shot Ultra (2x), Cavalry 9 (2x)

Dewormer: Dectomax (3x), Safeguard (2x) **Implants:** None

Genetics: 50-75% or more Angus. Sired by Angus bulls from Chatel or 2 SimAngus bulls and out of commercial Angus, SimAngus, or Char-Angus cows. About 5% may have 2-3" horns.

Programs: BeefTraxx Verified Natural; NHTC; Source and Age; Affidavit

Comments: Broke to bunks and waters. A good set of home-raised, all natural steers that haven't been pushed hard. Steers have been vaccinated 3 times - once prior to weaning and twice after in September and December. They were weaned September 2024 and mainly been grazing since then and fed 2-3 times a week. Cattle are EID tagged and verified natural through BeefTraxx. Will also sign additional natural affidavits if needed.

MACS Rep: Romaine Cartee, 912-531-0580

Programs:       

Lot 5148 1 Load of STEERS

Price: \$ _____ Buyer # _____

Timberland Farms (Will Tanner)
Wrightsville, GA - 70 miles southwest of Augusta, GA



Home-Raised, Verified Natural, EID Tagged, Backgrounded, Weaned, BQA Certified

Base Weight: 1010 lbs. Wt. Stop: 1050 lbs. Variance: 175 lbs.

Pickup Date: May 12-16 **Estimated Head Count** 48

Slide/Shrink: 2% shrink and slide \$10/cwt topside only

Weigh: Hauled 10 miles, weighed on the truck on certified scales

Notice to load: 72 hours **Weaned:** 240+ days

Colors: 80% blk/bwf, 15% ch-x/smoke, 5% red/rwf

Flesh: Medium

Muscling: 95% #1, 5% #1.5

Frame: 50% Medium, 50% Large

Nutrition: Bunk fed 8# of corn silage twice a week and grazing rye grass and oats with free choice mineral.

Vaccinations: Bovi-Shield Gold 5 (2x), One Shot Ultra (2x), Cavalry 9 (2x)

Dewormer: Dectomax (3x), Safeguard (2x) **Implants:** None

Genetics: 50-75% or more Angus. Sired by Angus bulls from Chatel or 2 SimAngus bulls and out of commercial Angus, SimAngus, or Char-Angus cows. About 5% may have 2-3" horns.

Programs: BeefTraxx Verified Natural; NHTC; Source and Age; Affidavit

Comments: Broke to bunks and waters. A good set of home-raised, all natural steers that haven't been pushed hard. Steers have been vaccinated 3 times - once prior to weaning and twice after in September and December. They were weaned September 2024 and mainly been grazing since then and fed 2-3 times a week. Cattle are EID tagged and verified natural through BeefTraxx. Will also sign additional natural affidavits if needed.

MACS Rep: Romaine Cartee, 912-531-0580



Lot 5149 1 Load of STEERS

Price: \$ _____ Buyer # _____

Timberland Farms (Will Tanner)
Wrightsville, GA - 70 miles southwest of Augusta, GA



Home-Raised, Verified Natural, EID Tagged, Backgrounded, Weaned, BQA Certified

Base Weight: 1100 lbs. Wt. Stop: 1140 lbs. Variance: 175 lbs.

Pickup Date: May 12-16 **Estimated Head Count** 44

Slide/Shrink: 2% shrink and slide \$10/cwt topside only

Weigh: Hauled 10 miles, weighed on the truck on certified scales

Notice to load: 72 hours **Weaned:** 240+ days

Colors: 80% blk/bwf, 15% ch-x/smoke, 5% red/rwf

Flesh: Medium

Muscling: 95% #1, 5% #1.5

Frame: 50% Medium, 50% Large

Nutrition: Bunk fed 8# of corn silage twice a week and grazing rye grass and oats with free choice mineral.

Vaccinations: Bovi-Shield Gold 5 (2x), One Shot Ultra (2x), Cavalry 9 (2x)

Dewormer: Dectomax (3x), Safeguard (2x) **Implants:** None

Genetics: 50-75% or more Angus. Sired by Angus bulls from Chatel or 2 SimAngus bulls and out of commercial Angus, SimAngus, or Char-Angus cows. About 5% may have 2-3" horns.

Programs: BeefTraxx Verified Natural; NHTC; Source and Age; Affidavit

Comments: Broke to bunks and waters. A good set of home-raised, all natural steers that haven't been pushed hard. Steers have been vaccinated 3 times - once prior to weaning and twice after in September and December. They were weaned September 2024 and mainly been grazing since then and fed 2-3 times a week. Cattle are EID tagged and verified natural through BeefTraxx. Will also sign additional natural affidavits if needed.

MACS Rep: Romaine Cartee, 912-531-0580



Lot 5150 1 Load of HOLSTEIN STEERS

Price: \$ _____ Buyer # _____

Stephenson Farm (Ron Stephenson)
Chester, SC - 45 miles southwest of Charlotte, NC

Home-Raised, Backgrounded, Weaned

Base Weight: 1000 lbs. Wt. Stop: 1040 lbs. Variance: 150 lbs.

Pickup Date: May 12-16 **Estimated Head Count** 49

Slide/Shrink: 2% shrink and slide \$10/cwt topside only

Weigh: Hauled 5 miles, weighed on the truck on certified scales

Notice to load: 48-72 hours **Weaned:** 300+ days

Colors: 100% Holstein (2-3 hd solid black)

Muscling: 100% #1.5 & #2

Nutrition: No feed - on small grain pasture with free choice mineral and hay. Only fed silage in the winter

Vaccinations: Bovi-Shield Gold 5 (2x), Presponse (1x), Ultrabac 7 (2x), Pinkeye (1x)

Dewormer: Safeguard, Ivomec **Implants:** None

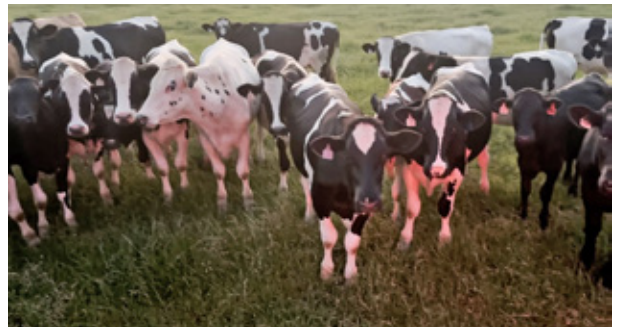
Genetics: Holstein - home-raised from Stephenson Dairy.

Programs: No

Comments: A very good set of Holstein steers ready to go to feed. Have not been pushed with feed, just running out on rye pasture. 200 head to choose the largest ones from. Will be a couple with a blue or white eye.

MACS Rep: Chuck Doolittle, 704-221-1447

Programs:



Flesh: Medium/Light

Frame: 100% Med/Large

Lot 5151 1 Load of HEIFERS

Price: \$ _____ Buyer # _____

Howey Ranch (Frank Howey)
Mount Croghan, SC - 40 miles southeast of Charlotte, NC

Home-Raised, GAP-4, Verified Natural, NHTC, Backgrounded, Weaned

Base Weight: 700 lbs. Wt. Stop: 750 lbs. Variance: 175 lbs.

Pickup Date: May 12-16 **Estimated Head Count** 63

Slide/Shrink: No shrink and slide \$14/cwt topside only

Weigh: Hauled 30 miles to Norwood, weighed on certified ground scales

Notice to load: 72 hours **Weaned:** 75+ days

Colors: 60% blk/bwf, 20% red/rwf, 20% ch-x

Muscling: 95% #1, 5% #1.5

Nutrition: 10-12# ph/pd of 12% pellet feed with free choice pasture, hay, and VitaFerm GainSmart minerals and stress tubs.

Vaccinations: Vista Once (1x), Vista 5 (1x), Vision 7 20/20 spur (2x), VitaCharge Drench

Dewormer: Cydectin, Safeguard **Implants:** None

Genetics: 50% or more Angus. Primarily sired by Red Angus and Angus bulls with a few SimAngus bulls. Bulls from Bieber, Pieper, EBS, and Black Grove. Out of Angus-based and crossbred cows. ~5-10% will show 1/16 to 1/4 of Brahman influence.

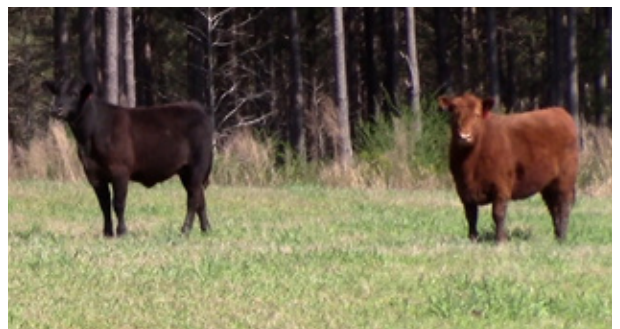
Programs: GAP-4; IMI Verified Natural; NHTC; Source & Age; Seller Affidavit

Heifers: Open, not palpated.

Comments: Broke to bunks and waters. A very good set of high-growth heifers that will finish as a big set of feeders. Calves are out of excellent Red Angus and Angus genetics in both the bulls and cows. Calves have been on the VitaFerm program with minerals, drench, and stress tubs. They are all natural and can be EID tagged for verified natural and NHTC with IMI Global. The GAP-4 certificate can transfer at no cost to buyer. (GAP#24858, Exp 3/21/26)

MACS Rep: Marcus Harward, 704-322-0840; Chuck Doolittle, 704-221-1447

Programs:



Flesh: Medium

Frame: 95% Medium, 5% Large

Lot 5152 1 Load of HEIFERS

Price: \$ _____ Buyer # _____

Rocky River Ranch
Norwood, NC - 40 miles east of Charlotte, NC

Affidavit Natural, Backgrounded, Weaned

Base Weight: 765 lbs. Wt. Stop: 800 lbs. Variance: 150 lbs.

Pickup Date: May 12-16 **Estimated Head Count** 65

Slide/Shrink: 2% shrink and slide \$14/cwt topside only

Weigh: Certified ground scales at farm

Notice to load: 48 hours **Weaned:** 90+ days

Colors: 99% blk/bwf, 1 hd rwf (can make all blk)

Muscling: 95% #1, 5% #1.5

Nutrition: Bunk fed TMR of oat silage, ground hay, soyhulls, wet corn gluten, whole corn, and mineral mixed in ration.

Vaccinations: Vista Once (1x), Vista 5 (1x), Vision 7 (1x) (January & March)

Dewormer: Safeguard, Dectomax **Implants:** None

Genetics: 50-75% Angus. Sired by Angus & SimAngus bulls out of Angus based cows. 3-4 with a flick of ear.

Programs: Seller Affidavit

Heifers: Vet palpated, guaranteed open

Comments: Broke to bunks and waters. A very good set of heifers that would work to go to grass or feed. Cattle came from local producers as weaned, double vaccinated and backgrounded at Rocky River together for 90+ days. Revaccinated here March 15 and April 20 with Vista 5 and Vista Once. 80 head to sort from. One RWF in the pen can be sorted out.

MACS Rep: Catherine Edwards, 704-550-7920

Programs:



Flesh: Medium

Frame: Medium

Lot 5153 1 Load of HEIFERS

Price: \$ _____ Buyer # _____

Hemric Farms (Van Hemric)
Ronda, NC - 40 miles northwest of Statesville, NC

Home-Raised, GAP-4, Verified Natural, NHTC, Backgrounded, Weaned, BQA Cert

Base Weight: 815 lbs. Wt. Stop: 855 lbs. Variance: 150 lbs.

Pickup Date: May 12-16 **Estimated Head Count** 60

Slide/Shrink: 2% shrink and slide \$10/cwt topside only

Weigh: Certified ground scales at farm

Notice to load: 48 hours **Weaned:** 90+ days

Colors: 96% blk/bwf, 1-2 hd ch-x/smoke

Muscling: 95% #1, 5% #1.5

Nutrition: Bunk fed TMR of corn silage, DDGs, hay, and mineral.

Vaccinations: Pyramid 5 Presponse (1x), Nasalgen 3 (1x), Triangle 10 (1x), Covexin 8 (2x), Pinkeye (1x)

Dewormer: Cydectin (2x) **Implants:** None

Genetics: 50-75% Angus. Sired by purebred Angus bulls out of predominantly Angus-based cows.

Programs: GAP-4; BeefTraxx Verified Natural; NHTC; Source & Age; Seller Affidavit

Heifers: Vet palpated, guaranteed open

Comments: Broke to bunks and waters. A good set of verified natural, GAP-4 heifers that are high percentage Angus, double vaccinated, weaned over 90 days. GAP certificate can transfer at no cost to buyer (GAP#22553; Exp 5/27/25). Heifers are EID tagged for verified natural and NHTC through BeefTraxx. There may be 1 or 2 with a blue eye.

MACS Rep: Marcus Harward, 704-322-0840; Jimmy Dagenhart, 704-425-3587

Programs:



Flesh: Medium

Frame: Medium

Lot 5154 1 Load of HEIFERS

Price: \$ _____ Buyer # _____

Donald Chriscoe Farm
Asheboro, NC - 40 miles south of Greensboro, NC

Affidavit Natural, Backgrounded, Weaned

Base Weight: 830 lbs. Wt. Stop: 865 lbs. Variance: 150 lbs.

Pickup Date: May 12-16 **Estimated Head Count** 58

Slide/Shrink: 2% shrink and slide \$10/cwt topside only

Weigh: Certified ground scales at farm

Notice to load: 24-48 hours **Weaned:** 120+ days

Colors: 90% (52 hd) blk/bwf, 2 hd ch-x, 4 hd red

Muscling: 95% #1, 5% #1.5

Nutrition: Bunk fed haylage and TMR (wet corn gluten, cotton) with access to mineral, hay, and pasture.

Vaccinations: Vista 5 (2x), Nuplura (1x), Vision 7 20/20 (1x), Ocuguard Pinkeye (1x)

Dewormer: Ivomec Inject. (2x) **Implants:** None

Genetics: Commercial Angus-based. Mainly sired by Angus and SimAngus bulls.

Programs: Seller Affidavit

Heifers: Palpated, guaranteed open

Comments: Broke to bunks and waters. Reputational calves purchased from local producers and backgrounded at Chriscoe's for 100+ days. Owner affidavit natural - signed natural affidavits from original producers that will transfer with the cattle.

MACS Rep: Marcus Harward, 704-322-0840



Flesh: Medium

Frame: Medium

Lot 5155 1 Load of HEIFERS

Price: \$ _____ Buyer # _____

Randy Ratliff
Marshville, NC - 20 miles southeast of Charlotte, NC

Backgrounded, Weaned

Base Weight: 825 lbs. Wt. Stop: 865 lbs. Variance: 125 lbs.

Pickup Date: May 12-16 **Estimated Head Count** 59

Slide/Shrink: 2% shrink and slide \$10/cwt topside only

Weigh: Certified MACS ground scales at farm

Notice to load: 48-72 hours **Weaned:** 150+ days

Colors: 97% blk/bwf, 3% ch-x (couple with flick of ear)

Muscling: 95% #1, 5% #1.5

Nutrition: Bunk fed TMR (corn silage, ground corn, cotton seed) with free choice hay and mineral on 10 acre grass lots.

Vaccinations: Vista Once (2x), Vista 5 (1x), Cavalry 9 (1x), Endovac (1x)

Dewormer: Safeguard (2x), Ivermectin Pour-On (1x) **Implants:** None

Genetics: Commercial Angus-based.

Programs: No

Heifers: Open, not palpated.

Comments: Broke to bunks and waters. Purchased last fall, double vaccinated, and backgrounded together for over 150 days. Heifers have not been palpated but should all be open. Can palpate at the farm if given enough notice prior to loading.

MACS Rep: Chuck Doolittle, 704-221-1447



Flesh: Medium

Frame: Medium

Lot 5156 1 Load of HEIFERS

Price: \$ _____ Buyer # _____

Randy Ratliff
 Marshville, NC - 20 miles southeast of Charlotte, NC

Backgrounded, Weaned

Base Weight: 875 lbs. **Wt. Stop:** 915 lbs. **Variance:** 125 lbs.

Pickup Date: May 12-16 **Estimated Head Count** 55

Slide/Shrink: 2% shrink and slide \$10/cwt topside only

Weigh: Certified MACS ground scales at farm

Notice to load: 48-72 hours **Weaned:** 150+ days

Colors: 83% blk/bwf, 7% ch-x, 10% red/rwf (couple with flick of ear)

Flesh: Medium

Muscling: 95% #1, 5% #1.5

Frame: Medium

Nutrition: Bunk fed TMR (corn silage, ground corn, cotton seed) with free choice hay and mineral on 10 acre grass lots.

Vaccinations: Vista Once (2x), Vista 5 (1x), Cavalry 9 (1x), Endovac (1x)

Dewormer: Safeguard (2x), Ivermectin Pour-On (1x) **Implants:** None

Genetics: Commercial Angus-based.

Programs: No

Heifers: Open, not palpated.

Comments: Broke to bunks and waters. Purchased last fall, double vaccinated, and backgrounded together for over 150 days. Heifers have not been palpated but should all be open. Can palpate at the farm if given enough notice prior to loading.

MACS Rep: Chuck Doolittle, 704-221-1447

Programs:



Lot 5157 1 Load of HEIFERS

Price: \$ _____ Buyer # _____

B & D Farms
 Lancaster, SC - 35 miles southeast of Charlotte, NC

Home-Raised, GAP-4, Verified Natural, Backgrounded, Weaned

Base Weight: 875 lbs. **Wt. Stop:** 915 lbs. **Variance:** 150 lbs.

Pickup Date: May 12-16 **Estimated Head Count** 55

Slide/Shrink: 2% shrink and slide \$10/cwt topside only

Weigh: Hauled 3 miles, weighed on certified ground scales.

Notice to load: 48 hours **Weaned:** 120+ days

Colors: 60% blk/bwf, 25% ch-x, 15% red/rwf

Flesh: Medium

Muscling: 90% #1, 10% #1.5

Frame: Medium

Nutrition: Bunk fed 3-4# ph/pd of commodity pellet feed with free choice mineral, pasture, and hay

Vaccinations: Bovi-Shield Gold One Shot (1x), Bovi-Shield Gold 5 (1x), Ultrabac 7 somubac (1x), Ultrabac 7 (1x)

Dewormer: Safeguard, Ivermectin **Implants:** None

Genetics: 50%+ Angus. Out of Angus-based cows and sired by Angus, Charolais, or Hereford bulls.

Programs: GAP-4; IMI Verified Natural; NHTC; Source and Age; Seller Affidavit

Heifers: Open, not palpated.

Comments: Broke to bunks and waters. Hand fed and have not been pushed at all, weaned over 100 days, and carrying just a medium grass flesh. All-natural certifications can transfer at no cost to the buyer. Will be a couple with tipped horns and may be a couple with a blue eye. (GAP#24849, Exp. 6/6/26).

MACS Rep: Chuck Doolittle, 704-221-1447

Programs:



Lot 5158 1 Load of HEIFERS

Price: \$ _____ Buyer # _____

Rocking H Cattle Company
Norwood, NC - 40 miles east of Charlotte, NC

Home-Raised, GAP-4, CARE, Verified Natural, NHTC, Backgrounded, Weaned

Base Weight: 890 lbs. Wt. Stop: 925 lbs. Variance: 150 lbs.

Pickup Date: May 7-16 **Estimated Head Count** 55

Slide/Shrink: 2% shrink and slide \$10/cwt topside only

Weigh: Certified ground scales at farm

Notice to load: 48 hours **Weaned:** 120+ days

Colors: 90% blk/bwf, 4 hd ch-x, 1 hd red

Muscling: 95% #1, 5% #1.5

Nutrition: Bunk fed TMR of oat silage, ground hay, soyhulls, wet corn gluten, whole corn, and mineral mixed in ration.

Vaccinations: Vista Once (2x), Vista 5 (1x), Vision 7 (1x), Vision 7 somnus (1x) (last shots given April 3)

Dewormer: Safeguard (2x), Longrange (1x) **Implants:** None

Genetics: 50-75% Angus. Sired by Angus & SimAngus bulls from EBS Farms and Harward Sisters out of Angus-X (Sim or Char) cows.

Programs: GAP-4; BeefCare; IMI Verified Natural; NHTC; Source & Age; Affidavit

Heifers: Vet palpated, guaranteed open

Comments: Broke to bunks and waters. BQA Certified. A very good set of late fall & winter born heifers with several years of high-performing genetics. Past years these calves have finished out as high percentage Choice and Prime. Natural certifications are able to transfer at no cost to the buyer. (GAP recert. pending). Have had three rounds of vaccinations. **CARE certified and Rocking H has not previously or are currently involved in selling any carbon credits.

MACS Rep: Marcus Harward, 704-322-0840

Programs:



Flesh: Medium

Frame: Medium

Lot 5159 1.95 Loads of HEIFERS

Price: \$ _____ Buyer # _____

Timberland Farms (Will Tanner)
Wrightsville, GA - 70 miles southwest of Augusta, GA

Home-Raised, Verified Natural, EID Tagged, Backgrounded, Weaned, BQA Certified

Base Weight: 985 lbs. Wt. Stop: 1025 lbs. Variance: 225 lbs.

Pickup Date: May 12-16 **Estimated Head Count** 95

Slide/Shrink: 2% shrink and slide \$10/cwt topside only

Weigh: Hauled 10 miles, weighed on the truck on certified scales

Notice to load: 72 hours **Weaned:** 240+ days

Colors: 80% blk/bwf, 15% ch-x/smoke, 5% red/rwf

Muscling: 95% #1, 5% #1.5

Nutrition: Bunk fed 8# of corn silage twice a week and grazing rye grass and oats with free choice mineral.

Vaccinations: Bovi-Shield Gold 5 (2x), One Shot Ultra (2x), Cavalry 9 (2x)

Dewormer: Dectomax (3x), Safeguard (2x) **Implants:** None

Genetics: 50-75% or more Angus. Sired by Angus bulls from Chatel or 2 SimAngus bulls and out of commercial Angus, SimAngus, or Char-Angus cows. About 5% may have 2-3" horns.

Programs: BeefTraxx Verified Natural; NHTC; Source and Age; Affidavit

Heifers: Preg-checked Open, not palpated.

Comments: Broke to bunks and waters. A good set of home-raised, all natural heifers that haven't been pushed hard. Heifers have been vaccinated 3 times - once prior to weaning and twice after in September and December. They were weaned September 2024 and mainly been grazing since then and fed 2-3 times a week. Cattle are EID tagged and verified natural through BeefTraxx. Will also sign additional natural affidavits if needed. **95 head at about 94,000 lbs.**

MACS Rep: Romaine Cartee, 912-531-0580

Programs:



Flesh: Medium

Frame: 50% Medium, 50% Large

Lot 5160 0.95 Load of STRS/HFRS

Price: \$ _____ Buyer # _____

H & B Cattle Company
Fountain Inn, SC - 20 miles southeast of Greenville, SC

Affidavit Natural, Backgrounded, Weaned



~23 Steers Wt: 775 lbs. Wt. Stop: 810 lbs. Variance: 250 lbs.
~34 Hfrs Wt: 775 lbs. Wt. Stop: 810 lbs. Variance: 250 lbs.
Heifers sell \$15/cwt back

Pickup Date: May 12-16
Slide/Shrink: 2% shrink and slide \$12/cwt topside only
Weigh: Certified ground scales at farm
Notice: 24-48 hours **Weaned:** 120+ days
Colors: 42 hd blk/bwf, 2 hd ch-x, 13 hd red/rwf
Muscling: 90% #1, 10% #1.5
Flesh: Medium
Frame: Medium
Nutrition: Bunk fed 10-12# ph/pd of TMR (silage, corn gluten, soyhulls) with free choice mineral, pasture, and hay.
Vaccinations: Vista Once (1x), Vista 5 (1x), Vision 7 somnus (2x)
Dewormer: Cydectin Inj (1x), Safeguard (2x) **Implants:** None
Genetics: 50-75% Angus. Sired by Angus and SimAngus bulls out of Angus-X cows.
Programs: Seller Affidavit
Preg-checked: Open, not palpated.
Comments: Broke to bunks and waters. A good set of backgrounded steers and heifers that were purchased from local producers and backgrounded together on pasture for over 120 days. Double vaccinated and not being pushed hard on feed.
Approximately a 45,000 lbs load.
MACS Rep: David McDannald, 864-360-0481

Programs:   

Lot 5161 1.15 Load of STRS/HFRS

Price: \$ _____ Buyer # _____

Timberland Farms (Will Tanner)
Wrightsville, GA - 70 miles southwest of Augusta, GA

Home-Raised, Verified Natural, EID Tagged, Backgrounded, Weaned, BQA Certified

~31 Steers Wt: 1100 lbs. Wt. Stop: 1140 lbs. Variance: 200 lbs.
~25 Hfrs Wt: 935 lbs. Wt. Stop: 975 lbs. Variance: 200 lbs.
Heifers sell \$10/cwt back



Pickup Date: May 19-23
Slide/Shrink: 2% shrink and slide \$10/cwt topside only
Weigh: Hauled 10 miles, weighed on the truck on certified scales
Notice: 72 hours **Weaned:** 240+ days
Colors: 10% blk/bwf, 30% ch-x/smoke, 60% red/rwf
Muscling: 95% #1, 5% #1.5
Flesh: Medium
Frame: 50% Medium, 50% Large
Nutrition: Bunk fed 8# of corn silage twice a week and grazing rye grass and oats with free choice mineral.
Vaccinations: Bovi-Shield Gold 5 (2x), One Shot Ultra (2x), Cavalry 9 (2x)
Dewormer: Dectomax (3x), Safeguard (2x) **Implants:** None
Genetics: 50% Akaushi Wagyu. Sired by Akaushi Wagyu bulls from Chatel Farms and out of commercial Angus, SimAngus, or Char-An-gus cows. 10-15% with 2-3" horns or scurs.
Programs: BeefTraxx Verified Natural; NHTC; Source and Age; Affidavit
Preg-checked: Open, not palpated.
Comments: Broke to bunks and waters. A good set of home-raised, all natural steers heifers that haven't been pushed hard. Cattle have been vaccinated 3 times - once prior to weaning and twice after in September and December. They were weaned September 2024 and mainly been grazing since then and fed 2-3 times a week. Cattle are EID tagged and verified natural through BeefTraxx. Will also sign additional natural affidavits if needed. SIREN BY WAGYU BULLS. OVERSIZED LOAD.
MACS Rep: Romaine Cartee, 912-531-0580

Programs:       

MID-ATLANTIC CATTLE SALES

WWW.MACSVIDEO.COM



UPCOMING SALES

May 6
May 20
June 3
June 17

July 8
July 22
August 5
August 19

Our motto - Working hard for you today and every day!



To view the sale or bid online, visit www.DVAuction.com. Find the "Mid-Atlantic Cattle Sales (Richfield, NC)" sale and click on "Details." From this page you can view the catalog, videos, or log in to watch the sale. If you have an account, log in and view the sale. If you do not, you must create an account under the "Create New Account" tab in the upper left hand corner of the screen. You will need to confirm this account through your e-mail.

You DO NOT have to be approved for a buyer's number just to watch the sale but you will still need to create an account with DVAuction.



Mid-Atlantic Cattle Sales, LLC
28978 Misenheimer Rd. Richfield, NC 28137
info@macsvideo.com • www.MACSVideo.com

**Bonded through USDA Packers & Stockyards*

SALE TERMS AND CONDITIONS - PAGE 1 OF 2

MID-ATLANTIC CATTLE SALES, LLC

1. Each bidder must be pre-registered and have a Buyer Number to participate in the auction. To register for the auction call 704-322-9770, 704-322-0840, or register through DV Auction. By participating in the auction, the Buyer expressly agrees to adhere to these Terms and Conditions and to the provisions set forth in the Livestock Purchase Agreement sent after the auction. All cattle being offered for sale are under standard Contracts for Sale. All cattle are purchased under standard Contracts for Purchase by the Buyers.
2. The cattle offered for sale are indicated on the sale sheets or online sale description as described to the MACS representatives by the owner. They are described by lot numbers, seller, location of the cattle, numbers of head, estimated weight, management practices, delivery date, conditions of sale and delivery, and verified programs. Representatives for each load are listed under each respective lot. Every effort has been made to assure the correctness of this information but all announcements from the auctioneer or official auction staff prior to or during the sale shall take precedence over printed matter herein.
3. Auction bids will be taken as voice bids by telephone and in person or online bids through DV Auction. Bids are asked with each lot of cattle and will be sold to the highest bidder on the basis of estimated weight. Seller reserves the right to "no sale" the load lot(s) of their cattle at the time the highest bid is made as long as the "no sale" announcement is made prior to the next lot being sold. Any departure from this procedure will be announced and all announcements made from the auctioneer or official auction staff will take precedence over printed matter herein.
4. The Auctioneer reserves the right to reject any and all bids. Auctioneer will settle all disputed bids. If a dispute arises between two or more bidders, the Auctioneer may immediately put the lot up for sale again and resell to the highest bidder. The decision of the Auctioneer shall be final and absolute.
5. One full load of stocker or feeder cattle will be contracted for approximately 48,000 lbs. and the respective head count at the base weight at the full truckload weight. No freight adjustment will be given if the average weight at delivery is under the base weight and the head count delivered is within 95% of the contracted head count. Mid-Atlantic Cattle Sales and its representatives will act as agents only in the sale of lots of cattle. As the marketing agency we cannot guarantee a minimum or maximum amount of shrink on any load. Any weight guarantees in regard to shrink must be given by Seller. Mid-Atlantic Cattle Sales cannot guarantee off truck weights.
6. Cattle that are picked up after the stated delivery dates will be subject to a 2# per head per day increase on the base weight and any weight stops for each day late after the last stated delivery date. Any deviation from this 2# per head per day will be posted in the catalog and announced on sale day.
7. Most loads have weight stops at 25-50 lbs. over the base weight. The individual weight stops are posted on each lot. If a weight stop is listed, cattle will slide after shrink up to the posted weight stop and be sold on a total net weight at the posted weight stop. Any pounds after shrink over the weight stop will not be billed to the buyer or paid to the seller unless other arrangements have been made in writing.
8. All cattle will be sold on a sliding scale as listed on each load. The "price slide" will go into effect when the average net weight of the live cattle is over the base weight the cattle are sold at. This will go into effect starting at 1 pound over the base weight.
Slide Example: The cattle were sold at a base weight of 700 lbs with a \$5/cwt topside slide for \$150/cwt and at delivery weighed 725 lbs after shrink. The cattle would slide \$1.25 for a new price of \$148.75 at 725 lbs.
[Slide (\$5/cwt) X Pounds Over (25) = \$1.25/cwt] Also can be shown as $[\$5 / 100 \times 25 = \$1.25]$
9. On split loads the heifer price will be \$___/cwt (as stated in the lot information) back of the original price of the steers. The steers will be based at their purchase price and base weight and the heifers will be based at their purchase price and base weight. At delivery, slides and weight stops will be calculated separately on each group.

SALE TERMS AND CONDITIONS - PAGE 2 OF 2

MID-ATLANTIC CATTLE SALES, LLC

- 10.** The Buyer is responsible for all arrangements and regulatory requirements with respect to the transportation of the livestock and the Buyer is responsible for sending trucks to adequately load the number of head and/or the total weight contracted in order to legally transport them to their final destination. Cattle sold will be sorted and delivered to the stated weigh point by the Seller and weighed on a certified scale. Buyer will receive the cattle at point of weighing under conditions as stated with respect to each lot. Buyer will take ownership of the cattle at the point of loading.
- 11.** Health entry requirements for the state of entry are the responsibility of the Buyer. The Seller will furnish any health certificates required for the state of origin and Federal Law at the request of the buyer. If additional health certificates, documentation or tests are required for shipment to the Buyer's destination, it shall be at the Buyer's request and expense.
- 12.** Any heifer that is sold as guaranteed open and is determined to be bred by the buyer will receive a \$200 per bred heifer refund given appropriate documentation is provided within 90 days (updated) of the cattle being delivered. Documentation must include lot information, heifer identification, and veterinarian documentation. **UPDATE: Effective July 1, 2024 all heifer loads, unless explicitly stated in the catalog, are sold with a 90-day bred heifer refund guarantee. The catalog will explicitly state if heifers have been checked for pregnancy prior to delivery so that the buyer can plan accordingly.**
- 13.** Payment by Buyer is due and payable in accordance with USDA P&S prompt pay policy upon delivery of the cattle and at such times as the value of the cattle is determined based on weight (subject to condition), price (subject to condition), and any other conditions stated at time of sale. Payment must be sent to Mid-Atlantic Cattle Sales within 1 day after the cattle are received by the Buyer. We request that all payments be sent by Wire Transfer, ACH, or overnight delivery of a check via FedEx or UPS. Payment sent via the U.S. Postal Service (1st Class or Priority Mail) are expected to be received within 7 business days of delivery. Any fees incurred for sending payment will be at the Buyer's expense.
- 14.** Mid-Atlantic Cattle Sales does not warrant the harvest date on source and age verified cattle and cannot guarantee back verification on any program requiring signed affidavits or 3rd party verification. Mid-Atlantic Cattle Sales will make all efforts to ensure verifications are met, but it is the Buyer's responsibility to verify all claims of the Seller to fit specific programs prior to purchase.
- 15.** There are no implied warranties of merchantability or fitness for a particular purpose on any livestock sold. Seller does not warrant that the livestock are free from any latent defect, condition, sickness, or disease. Seller does not assume responsibility for any loss after the livestock are delivered, which results from any latent defect, condition, sickness, or disease.



Marcus Harward: 704-322-0840
Brooke Harward: 704-322-9770

info@macsvideo.com
www.MACsvideo.com

28978 Misenheimer Rd • Richfield, NC 28137