



## MID-ATLANTIC CATTLE SALES

*A family owned and operated livestock video auction  
with 30+ years of livestock marketing experience.*

---

**MAY 20, 2025**  
**TUESDAY AT 1:00 PM EST**

**WWW.MACSVIDEO.COM**



**Mid-Atlantic Cattle Sales, LLC**  
28978 Misenheimer Rd. Richfield, NC 28137  
704-322-0840 • 704-322-9770  
info@macsvideo.com

**DVAuction**  
Broadcasting Real-Time Auctions

# Video Sale INFORMATION

The cattle offered for sale are indicated on the following sale sheets and the online sale description as described to the MACS representatives by the owner. They are described by lot numbers, seller, location of cattle, numbers of head, estimated weight, management practices, delivery date, conditions of sale and delivery, and verified programs. Representatives for each load are listed under each respective lot. Every effort has been made to assure the correctness of this information but all announcements from the auctioneer or official auction staff prior to or during the sale shall take precedence over printed matter herein.

## SALE DATE & TIME:

**Tuesday - May 20, 2025**

**1:00 pm est. | 12:00 pm cst.**

## CONTACT:

Marcus Harward .....704-322-0840

Brooke Harward .....704-322-9770

**[www.MACSvideo.com](http://www.MACSvideo.com)**

*View catalog, videos, and additional updates online.*

**[www.vimeo.com/macsvideo](http://www.vimeo.com/macsvideo)**

*All videos of sale cattle are posted directly on our video page listed above and on DV Auction*

**\*MACS Sale Terms and Conditions are listed in this catalog and online. All loads will sell under these terms and conditions.**

## Bidding Options

*We want to offer you the best opportunities we can to participate in our sales each month.  
Below are three options for bidding on the sale.*

### 1. CONFERENCE CALL

After 12:45 eastern on sale day, you can call the auction number to listen and bid on the sale. To bid during the sale, you will use your buyer number to bid on the lot. Contact Marcus or Brooke prior to the sale to receive a buyer's number. *Please keep background noise to a minimum as we will have multiple people on the line. To mute your phone, press \*1. To un-mute, press \*1 again.*

**CALL-IN NUMBER: 1-866-906-9888**

**PASSCODE: 9461720 #**



### 2. DV AUCTION - INTERNET VIEWING AND BIDDING

To view the sale or bid online, visit [www.DVAuction.com](http://www.DVAuction.com). Find the "Mid-Atlantic Cattle Sales (Richfield, NC)" sale and click on "Details." From this page you can view the catalog, videos, or log in to watch the sale. If you have an account, log in and view the sale. If you do not, you must create an account under the "Create New Account" tab in the upper left hand corner of the screen. You will need to confirm this account through your e-mail. *It is best to do this at least a day before the sale.*

**You DO NOT have to be approved just to watch the sale but you will still need to create an account with DVAuction. To register for a buyer's number, call Brooke at 704-322-9770 prior to the sale to be approved to bid online.**

### 3. ABSENTEE BIDDING

For people who can not view or bid on the sale at sale time, we have can handle closed bids in house and assist you with absentee bidding. Contact Marcus at 704-322-0840 for more information.

*"May the God of hope fill you with all joy and peace in believing,  
so that you may abound in hope by the power of the Holy Spirit."*

**ROMANS 15:13**



# LOT SUMMARY

## TUESDAY, MAY 20, 2025

Video Sale Information	Pg 2
Table of Contents / Lot Summary	Pg 3
2025 Graded Feeder Calf Sale Schedule	Pg 4

LOT NUMBER	LOAD NUMBER	TYPE	BASE WT.	PRODUCER	STATE	DELIVERY	PAGE NUMBER
<b>Replacement Quality Heifers</b>							
Lot 5163	25 Head	Heifers		Elaine Moore Cattle Farm *	NC	May 29-June 6	Pg 5
<b>Five Circle Farms Unweaned Calves</b>							
Lot 5164	1 Load	Steers	595 lbs.	Five Circle Farms *	SC	May 29-31	Pg 6-7
Lot 5165	1 Load	Steers	695 lbs.	Five Circle Farms *	SC	May 29-31	Pg 6-7
Lot 5166	1 Load	Heifers	560 lbs.	Five Circle Farms *	SC	May 29-31	Pg 6-7
<b>Regular Sale</b>							
Lot 5167	1 Load	Steers	625 lbs.	Bruce Humble	NC	May 26-30	Pg 8
Lot 5168	2 Loads	Steers	700 lbs.	Scotton Farms	NC	May 27-28	Pg 8
Lot 5169	1 Load	Steers	715 lbs.	Hemric Farms * <b>GAP</b> <b>VNB</b> <b>NHTC</b>	NC	May 26-30	Pg 9
Lot 5170	1 Load	Steers	760 lbs.	Donald Chriscoe Farm *	NC	May 22-30	Pg 9
Lot 5171	2 Loads	Steers	775 lbs.	Triple D Farms * <b>GAP</b> <b>VNB</b> <b>NHTC</b>	NC	Sept. 26-30	Pg 10
Lot 5172	1 Load	Steers	850 lbs.	Triple D Farms * <b>GAP</b> <b>VNB</b> <b>NHTC</b>	NC	Sept. 26-30	Pg 10
Lot 5173	1 Load	Steers	800 lbs.	Stephenson Farm *	SC	May 26-30	Pg 11
Lot 5174	1 Load	Steers	815 lbs.	Hannah Cattle Company	NC	June 9-13	Pg 11
Lot 5175	1 Load	Steers	840 lbs.	Price Family Farm * <b>VNB</b> <b>NHTC</b>	NC	May 26-30	Pg 12
Lot 5176	0.8 Load	Steers	850 lbs.	Webb Cattle Company	NC	May 26-30	Pg 12
Lot 5177	1 Load	Steers	875 lbs.	Talley Farms Inc * <b>GAP</b>	NC	May 22-30	Pg 13
Lot 5178	2 Loads	Steers	920 lbs.	Windell Talley *	NC	May 22-30	Pg 13
Lot 5179	1 Load	Heifers	670 lbs.	5-K Arena	NC	May 26-30	Pg 14
Lot 5180	1 Load	Heifers	715 lbs.	Hemric Farms * <b>GAP</b> <b>VNB</b> <b>NHTC</b>	NC	June 9-13	Pg 14
Lot 5181	1 Load	Heifers	730 lbs.	Randy Ratliff	NC	May 26-30	Pg 15
Lot 5182	2 Loads	Heifers	770 lbs.	Donald Chriscoe Farm *	NC	May 22-30	Pg 15
Lot 5183	1 Load	Heifers	775 lbs.	Talley Farms Inc * <b>GAP</b>	NC	May 22-30	Pg 16
Lot 5184	1 Load	Heifers	800 lbs.	Hemric Farms * <b>GAP</b> <b>VNB</b> <b>NHTC</b>	NC	June 2-6	Pg 16
Lot 5185	1 Load	Heifers	850 lbs.	Stephenson Farm *	SC	May 26-30	Pg 17

Upcoming Video Sale Dates	Pg 16
DV Auction Information	Pg 17
MACS Sale Terms & Conditions	Pg 18-19

\* = Affidavit Natural    **GAP**= GAP Certified    **VNB**= Verified Natural  
**NHTC**= Non-Hormone Treated    **CARE**= BeefCARE Certified

# GRADED FEEDER CALF SALES

## SPECIAL VALUE-ADDED FEEDER CALF SALES

### 2025 REQUIREMENTS

- Steers and heifers (no bulls), 400+ lbs.
- Steers must be properly castrated and healed.
- Calves must not have horns - either be polled or properly dehorned and healed.
- Producer must submit a completed and signed "Weaned Sale Health Record Form" on sale day.

#### VACCINATIONS

- Two doses of a Respiratory Modified-Live Viral (MLV) vaccine for IBR-BVD-P13-BRSV
- At least one dose of Mannheimia Haemolytica (Pasteurella), can be given with MLV vaccine.
- Two doses of a Clostridial/Blackleg vaccine
- At least one dose of Haemophilus Somnus, can be given with blackleg vaccine
- At least one round of parasite control with a recognized dewormer
- Implants are optional

*\*Both rounds of vaccinations must be given 21-90 days prior to being sold*

#### WEANING & OTHER CONDITIONS

- Calves must be weaned for 60+ days.
- Calves must be tagged with a yellow sale ear tag at the farm prior to being delivered to the sale.
- Heifers must be guaranteed open.

#### ADDITIONAL RECOMMENDATIONS

- Mineral program
  - Bunk broke
- Cow vaccination program

*While these are our recommendations, we encourage you to consult your veterinarian regarding herd health management decisions. Always read and administer vaccines according to label directions and use BQA best handling practices.*

SALE DATE	CATTLE MUST BE WEANED BY: (60 days)	CATTLE MUST BE DOUBLE VACCINATED BETWEEN THESE DATES: (21-90 days prior to sale)
June 26, 2025	April 27	March 28 - June 5, 2025
August 14, 2025	June 15	May 16 - July 24, 2025
September 25, 2025	July 27	June 27 - September 4, 2025
November 13, 2025	September 14	August 15 - October 23, 2025

#### SALE LOCATION

Stanly County Livestock Market  
13215 Indian Mound Rd.  
Norwood, NC 28128  
[www.norwoodstockyardnc.com](http://www.norwoodstockyardnc.com)

#### CONTACT

MARCUS HARWARD (704) 322-0840  
BROOKE HARWARD (704) 322-9770  
CATHERINE EDWARDS (704) 550-7920  
[www.norwoodfeederalf.com](http://www.norwoodfeederalf.com)



**Lot 5163 25 Head of HEIFERS**

Price: \$ \_\_\_\_\_ Buyer # \_\_\_\_\_

**Elaine Moore Cattle Farm**

Albemarle, NC - 40 miles northeast of Charlotte, NC

Home-Raised, Natural, Backgrounded, Weaned, Replacement Quality Heifers

**SOLD BY THE HEAD (estimated 650-850 lbs)**



**Pickup Date:** May 29-June 6

**Estimated Head Count** 25

**Slide/Shrink:** N/A

**Weigh:** N/A

**Notice to load:** 48 hours

**Weaned:** 60+ days

**Colors:** 24 hd blk/bwf, 1 hd red

**Flesh:** Medium

**Muscling:** 100% #1

**Frame:** Medium

**Nutrition:** Bunk fed 12# ph/pd of 13% commodity feed mix with free choice high mag mineral, pasture, and hay

**Vaccinations:** Vista Once (1x), Nasalgen 3 PMH (1x), Vision 7 somnus (2x)

**Dewormer:** Valbazen, Ivomec (2x)

**Implants:** None

**Genetics:** 50-75% Angus. Sired by EBS & Harward Sisters Angus bulls and Green Hills Gelbvieh Balancer bulls. Out of Angus-based cows.

**Programs:** Seller Affidavit

**Heifers:** Guaranteed open, not palpated.

**Comments:** A fancy group of open heifers that would make an excellent set of replacement females. These heifers are coming from Elaine Moore who has spent many years breeding to high-quality, top genetic bulls and doing an excellent management job with her cow herd. These heifers are sired by Angus bulls from EBS Farms or Harward Sisters or Balancer bulls from Green Hills Gelbvieh. They were all born last fall, have been double vaccinated, and weaned for 60+ days. We are selling these heifers by the head, not by the pound, but they should average around 750 lbs. These heifers have a lot of growth and maternal traits bred into them and will make an excellent set of replacement heifers to breed this fall.

**MACS Rep:** Marcus Harward, 704-322-0840

**Programs:**

*Natural*  
**AFFIDAVIT**

**PrimeVAC**  
BY MERCK ANIMAL HEALTH



## **Lots 5164, 5165, & 5166 Five Circle Farms • Belton, SC**

3 loads of non-weaned cattle coming from Five Circle Farms. A reputational set of fancy calves that have been vaccinated and are coming straight off the cow with just grass and minerals. Birthdates are available on all calves. They were vaccinated and dewormed on April 10<sup>th</sup> and have not been implanted. They were weighed individually on April 10<sup>th</sup> and May 13<sup>th</sup> so should be very close on their weights.

Calves can load out May 29-31 but ***need to load all three loads on the same day.***

Five Circle Farms has used top Angus genetics from Yon Family Farms for many years as well as Charolais genetics from LG Herndon Farms. Angus sires of these calves include genetics from Yon Chattooga, Yon Beaufort, Yon Full Force, Yon Paymaster, SydGen Enhance, Musgrave Exclusive, GAR Quantum, Mill Bar Hickok, LD Capitalist, and Deer Valley Wall Street. Charolais sires of these calves include genetics from LT Patriot, LT Blue Value, and Bamboo County Line. One Brangus bull from Herndon Farms sired by Never Surrender of Salacoa was also used. Most of these calves are at least 50% Angus with Charolais sired calves being over 35-50% Angus.

**Over 80% of the Angus sires qualify for CAB Targeting the Brand.**



### **Angus Sires EPD Averages:**

**Top 30% for Yearling Weight • Top 30% for Marbling  
Top 30% for Ribeye Area • Top 30% for Carcass Weight**



### **Charolais Sires EPD Averages:**

**Top 40% for Yearling Weight • Top 30% for Marbling  
Top 40% for Carcass Weight**





**Lot 5164 1 Load of STEERS**

Price: \$ \_\_\_\_\_ Buyer # \_\_\_\_\_

**Five Circle Farms**

Belton, SC - 30 miles south of Greenville, SC

**Home-Raised, Affidavit Natural, Vaccinated, BQA Certified**

**Base Weight:** 595 lbs. **Wt. Stop:** N/A **Variance:** 150 lbs.

**Pickup Date:** May 29-31\*\* **Estimated Head Count** 84

**Slide/Shrink:** 2% shrink and slide \$18/cwt topside only

**Weigh:** Certified ground scales at farm

**Notice to load:** 72 hours **Weaned:** No

**Colors:** 57 hd blk/bwf, 21 hd smoke, 6 hd ch-x (2 hd w/ flick of ear)

**Muscling:** 90% #1, 10% #1.5

**MACS Rep:** Marcus Harward, 704-322-0840

**Flesh:** Medium

**Frame:** Medium

**Programs:**

*Natural*  
**AFFIDAVIT**

 **Boehringer**  
Ingelheim

**YON**  
FAMILY FARMS

**HF**



**Lot 5165 1 Load of STEERS**

Price: \$ \_\_\_\_\_ Buyer # \_\_\_\_\_

**Five Circle Farms**

Belton, SC - 30 miles south of Greenville, SC

**Home-Raised, Affidavit Natural, Vaccinated, BQA Certified**

**Base Weight:** 695 lbs. **Wt. Stop:** N/A **Variance:** 150 lbs.

**Pickup Date:** May 29-31\*\* **Estimated Head Count** 72

**Slide/Shrink:** 2% shrink and slide \$14/cwt topside only

**Weigh:** Certified ground scales at farm

**Notice to load:** 72 hours **Weaned:** No

**Colors:** 48 hd blk/bwf, 21 hd smoke, 3 hd ch-x (7 hd w/ flick of ear)

**Muscling:** 90% #1, 10% #1.5

**MACS Rep:** Marcus Harward, 704-322-0840

**Flesh:** Medium

**Frame:** Medium

**Programs:**

*Natural*  
**AFFIDAVIT**

 **Boehringer**  
Ingelheim

**YON**  
FAMILY FARMS

**HF**



**Lot 5166 1 Load of HEIFERS**

Price: \$ \_\_\_\_\_ Buyer # \_\_\_\_\_

**Five Circle Farms**

Belton, SC - 30 miles south of Greenville, SC

**Home-Raised, Affidavit Natural, Vaccinated, BQA Certified**

**Base Weight:** 560 lbs. **Wt. Stop:** N/A **Variance:** 150 lbs.

**Pickup Date:** May 29-31\*\* **Estimated Head Count** 89

**Slide/Shrink:** 2% shrink and slide \$18/cwt topside only

**Weigh:** Certified ground scales at farm

**Notice to load:** 72 hours **Weaned:** No

**Colors:** 64 hd blk/bwf, 20 hd smoke, 6 hd ch-x (3 hd w/ flick of ear)

**Muscling:** 90% #1, 10% #1.5

**MACS Rep:** Marcus Harward, 704-322-0840

**Flesh:** Medium

**Frame:** Medium

**Programs:**

*Natural*  
**AFFIDAVIT**

 **Boehringer**  
Ingelheim

**YON**  
FAMILY FARMS

**HF**



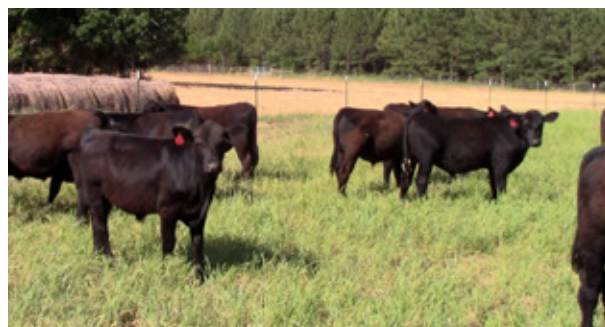
## Lot 5167 1 Load of STEERS

Price: \$ \_\_\_\_\_ Buyer # \_\_\_\_\_

**Bruce Humble**

Liberty, NC - 15 miles southeast of Greensboro, NC

**Backgrounded, Weaned**



**Base Weight:** 625 lbs. **Wt. Stop:** 665 lbs. **Variance:** 150 lbs.

**Pickup Date:** May 26-30 **Estimated Head Count** 78

**Slide/Shrink:** 2% shrink and slide \$15/cwt topside only

**Weigh:** Certified MACS ground scales at farm

**Notice to load:** 48-72 hours **Weaned:** 150+ days

**Colors:** 97% blk/bwf, 2-3 hd ch-x (can make all blk/bwf)

**Flesh:** Medium

**Muscling:** 95% #1, 5% #1.5

**Frame:** Medium

**Nutrition:** Bunk fed 4# corn per day running on rye grass with mineral and hay.

**Vaccinations:** Bovi-Shield Gold One Shot (2x), Cavalry 9 (2x)

**Dewormer:** LongRange

**Implants:** None

**Genetics:** Commercial Angus-based.

**Programs:** No

**Comments:** Broke to bunks and waters. A good load of 6 weight steers to go to grass or feed. Part of the steers are home-raised and the rest were purchased last fall but all have been running together for over 150 days. There are 2-3 with warts and a couple with scurs or nubbed horns but there are over 90 head to sort a load from.

**MACS Rep:** Marcus Harward, 704-322-0840

**Programs:**



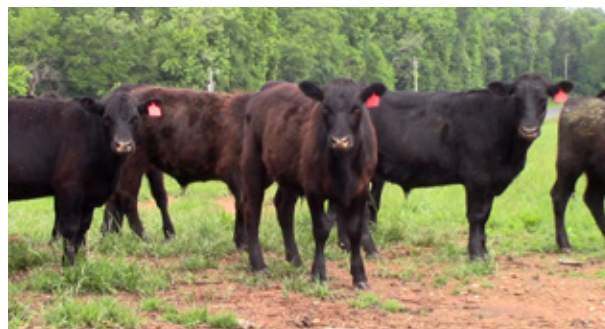
## Lot 5168 2 Loads of STEERS

Price: \$ \_\_\_\_\_ Buyer # \_\_\_\_\_

**Scotton Farms**

Staley, NC - 20 miles southeast of Greensboro, NC

**Backgrounded, Weaned**



**Base Weight:** 700 lbs. **Wt. Stop:** 740 lbs. **Variance:** 150 lbs.

**Pickup Date:** May 27 & 28 **Estimated Head Count** 139

**Slide/Shrink:** No shrink and slide \$14/cwt topside only

**Weigh:** Hauled 15 miles sorting barn, unloaded, weighed on MACS certified ground scales

**Notice to load:** 48 hours **Weaned:** 150+ days

**Colors:** 90% blk/bwf, 5% ch-x, 5% red/rwf

**Flesh:** Medium-Minus

**Muscling:** 80% #1, 20% #1.5

**Frame:** Medium

**Nutrition:** Bunk fed 3-4# daily of ground corn and cotton seed. Running on pasture since January. Free choice hay and mineral.

**Vaccinations:** Bovi-Shield Gold One Shot (1x), Vision 7 20/20 (1x)

**Dewormer:** Dectomax (1x), Safeguard (2x)

**Implants:** Ralgro (1x)

**Genetics:** Commercial Angus-based and crossbred.

**Programs:** No

**Comments:** Broke to bunks and waters. Purchased from local sale barns, vaccinated, and turned out on grass late last fall. Have primarily been on grass and hand fed daily, carrying just a medium/light flesh. A good set of steers to go to grass or feed. **\*\*Selling TWO loads but can only load one load each day.\*\***

**MACS Rep:** Marcus Harward, 704-322-0840

**Programs:**





## Lot 5169 1 Load of STEERS

Price: \$ \_\_\_\_\_ Buyer # \_\_\_\_\_

**Hemric Farms (Van Hemric)**

Ronda, NC - 40 miles northwest of Statesville, NC

Home-Raised, GAP-4, Verified Natural, NHTC, Backgrounded, Weaned, BQA Cert

**Base Weight:** 715 lbs. **Wt. Stop:** 755 lbs. **Variance:** 200 lbs.

**Pickup Date:** May 26-30 **Estimated Head Count** 68

**Slide/Shrink:** 2% shrink and slide \$12/cwt topside only

**Weigh:** Certified ground scales at farm

**Notice to load:** 48 hours **Weaned:** 120+ days

**Colors:** 98% blk/bwf, 1 hd ch-x

**Muscling:** 95% #1, 5% #1.5

**Nutrition:** Bunk fed TMR of corn silage, DDGs, hay, and mineral.

**Vaccinations:** Pyramid 5 Presponse (1x), Nasalgen 3 (1x), Triangle 10 (1x), Covexin 8 (2x), Pinkeye (1x)

**Dewormer:** Cydectin (2x)

**Implants:** None

**Genetics:** 50-75% Angus. Sired by purebred Angus bulls out of predominantly Angus-based cows.

**Programs:** GAP-4; BeefTraxx Verified Natural; NHTC; Source & Age; Seller Affidavit

**Comments:** Broke to bunks and waters. A fancy set of verified natural, GAP-4 steers that are high percentage Angus, double vaccinated, weaned over 120 days. GAP-4 certificate can transfer at no cost to buyer (GAP#22553; Exp 5/27/25). Can also be EID tagged for verified natural and NHTC through BeefTraxx. There may be 1-2 with a blue eye.

**MACS Rep:** Jimmy Dagenhart, 704-425-3587

**Programs:**

Natural  
AFFIDAVIT

global animal  
PARTNERSHIP

BEEF  
TRAXX

NHTC  
CERTIFIED

USDA  
AIDE & SOURCE  
VERIFIED

Boehringer  
Ingelheim

Quality That Counts



**Flesh:** Medium

**Frame:** Medium

## Lot 5170 1 Load of STEERS

Price: \$ \_\_\_\_\_ Buyer # \_\_\_\_\_

**Donald Chriscoe Farm**

Asheboro, NC - 40 miles south of Greensboro, NC

Affidavit Natural, Backgrounded, Weaned

**Base Weight:** 760 lbs. **Wt. Stop:** 795 lbs. **Variance:** 150 lbs.

**Pickup Date:** May 22-30 **Estimated Head Count** 64

**Slide/Shrink:** 2% shrink and slide \$12/cwt topside only

**Weigh:** Certified ground scales at farm

**Notice to load:** 24-48 hours **Weaned:** 120+ days

**Colors:** 90% (58 hd) blk/bwf, 5 hd ch-x, 1 hd red

**Muscling:** 95% #1, 5% #1.5

**Nutrition:** Bunk fed haylage and TMR (wet corn gluten, cotton) with access to mineral and hay.

**Vaccinations:** Vista 5 (2x), Nuplura (1x), Vision 7 20/20 (1x), Ocuguard Pinkeye (1x)

**Dewormer:** Ivomec Inject. (2x)

**Implants:** None

**Genetics:** Commercial Angus-based. Mainly sired by Angus and SimAngus bulls.

**Programs:** Seller Affidavit

**Comments:** Broke to bunks and waters. Reputational calves purchased from local producers and backgrounded at Chriscoe's for 120+ days. Owner affidavit natural - signed natural affidavits from original producers that will transfer with the cattle.

**MACS Rep:** Marcus Harward, 704-322-0840

**Programs:**

Natural  
AFFIDAVIT

Elanco

MERCK  
Animal Health

Quality That Counts



**Flesh:** Medium

**Frame:** Medium

**Lot 5171 2 Loads of STEERS**

Price: \$ \_\_\_\_\_ Buyer # \_\_\_\_\_

**Triple D Farms (Jamie Dail)**

Wallace, NC - 35 miles southeast of Clinton, NC

**Home-Raised, GAP-4, Verified Natural, NHTC, Backgrounded, Weaned****Base Weight: 775 lbs. Wt. Stop: 825 lbs. Variance: 125 lbs.****Pickup Date:** September 26-30 **Estimated Head Count** 125**Slide/Shrink:** 2% shrink and slide \$12/cwt topside only**Weigh:** Hauled 35 miles, weighed on the truck on certified scales**Notice to load:** 48 hours **Weaned:** 60+ days**Colors:** 100% blk/bwf**Flesh:** Medium**Muscling:** 100% #1**Frame:** Medium**Nutrition:** After weaning, bunk fed 15-18# ph/pd of TMR soyhulls, corn gluten, haylage with access to free choice pasture, mineral, and hay.**Vaccinations:** Vista Once (2x), Vision 7 20/20 w/spur (2x)**Dewormer:** Safeguard (1x), Ivomec (2x)**Implants:** None**Genetics:** 50-70% Angus, 30-50% Simmental. Sired by Angus and SimAngus bulls from Gibbs Farms & Yon Family Farms out of Angus X Simmental cows.**Programs:** GAP-4; BeefTraxx Verified Natural; NHTC; SAV; Seller Affidavit**Comments:** Broke to bunks and waters. A fancy group of steers that will be weaned 60+ days at time of delivery in late September. Calves carry excellent genetics; previous years' calf crops have fed out as 95% Prime and Choice. They have birthdates on all calves and calves were castrated at birth. A fancy set of reputational calves from a great program under a good health program and excellent genetics. GAP-4 certificate can transfer at no cost to buyer and calves will be EID tagged for Verified Natural and NHTC.**MACS Rep:** Marcus Harward, 704-322-0840**Programs:***Natural*  
**AFFIDAVIT***global animal*  
**PARTNERSHIP****BEEF**  
**TRAXX****NHTC**  
CERTIFIED**USDA**  
APPROVED**PrimeVAC**  
BY MERCK ANIMAL HEALTH**YON**  
FAMILY FARMS**GIBBS**  
FARMS*Quality That Counts***Lot 5172 1 Load of STEERS**

Price: \$ \_\_\_\_\_ Buyer # \_\_\_\_\_

**Triple D Farms (Jamie Dail)**

Wallace, NC - 35 miles southeast of Clinton, NC

**Home-Raised, GAP-4, Verified Natural, NHTC, Backgrounded, Weaned****Base Weight: 850 lbs. Wt. Stop: 900 lbs. Variance: 125 lbs.****Pickup Date:** September 26-30 **Estimated Head Count** 57**Slide/Shrink:** 2% shrink and slide \$10/cwt topside only**Weigh:** Hauled 35 miles, weighed on the truck on certified scales**Notice to load:** 48 hours **Weaned:** 60+ days**Colors:** 100% blk/bwf**Flesh:** Medium**Muscling:** 100% #1**Frame:** Medium**Nutrition:** After weaning, bunk fed 15-18# ph/pd of TMR soyhulls, corn gluten, haylage with access to free choice pasture, mineral, and hay.**Vaccinations:** Vista Once (2x), Vision 7 20/20 w/spur (2x)**Dewormer:** Safeguard (1x), Ivomec (2x)**Implants:** None**Genetics:** 50-70% Angus, 30-50% Simmental. Sired by Angus and SimAngus bulls from Gibbs Farms & Yon Family Farms out of Angus X Simmental cows.**Programs:** GAP-4; BeefTraxx Verified Natural; NHTC; SAV; Seller Affidavit**Comments:** Broke to bunks and waters. A fancy group of steers that will be weaned 60+ days at time of delivery in late September. Calves carry excellent genetics; previous years' calf crops have fed out as 95% Prime and Choice. They have birthdates on all calves and calves were castrated at birth. A fancy set of reputational calves from a great program under a good health program and excellent genetics. GAP-4 certificate can transfer at no cost to buyer and calves will be EID tagged for Verified Natural and NHTC.**MACS Rep:** Marcus Harward, 704-322-0840**Programs:***Natural*  
**AFFIDAVIT***global animal*  
**PARTNERSHIP****BEEF**  
**TRAXX****NHTC**  
CERTIFIED**USDA**  
APPROVED**PrimeVAC**  
BY MERCK ANIMAL HEALTH**YON**  
FAMILY FARMS**GIBBS**  
FARMS*Quality That Counts*



## Lot 5173 1 Load of STEERS

Price: \$ \_\_\_\_\_ Buyer # \_\_\_\_\_

**Stephenson Farm (Ron Stephenson)**

Chester, SC - 45 miles southwest of Charlotte, NC

**Home-Raised, Affidavit Natural, Backgrounded, Weaned**



**Base Weight:** 800 lbs. **Wt. Stop:** 840 lbs. **Variance:** 175 lbs.

**Pickup Date:** May 26-30 **Estimated Head Count** 61

**Slide/Shrink:** 2% shrink and slide \$10/cwt topside only

**Weigh:** Hauled 5 miles, weighed on the truck on certified scales

**Notice to load:** 48-72 hours **Weaned:** 150+ days

**Colors:** 95% blk/bwf, 2 hd ch-x, 1 hd red

**Flesh:** Medium

**Muscling:** 95% #1, 5% #1.5

**Frame:** Medium

**Nutrition:** No feed - on small grain pasture with free choice mineral and hay.

**Vaccinations:** Bovi-Shield Gold 5 (2x), Presponse (1x), Ultrabac 7 (2x), Pinkeye (1x)

**Dewormer:** Safeguard, Ivomec

**Implants:** None

**Genetics:** 50%+ Angus. Sired by Tokeena Angus bulls and out of predominantly Angus-X cows and some Char-X or red cows.

**Programs:** Seller Affidavit

**Comments:** Broke to waters. A fancy set of steers that have been backgrounded on just pasture, no feed. Carrying just a medium flesh, an excellent set of steers ready to go to feed. Will sign buyer's natural affidavits. May be a couple with blue eyes and scurs or tipped horns.

**MACS Rep:** Chuck Doolittle, 704-221-1447

**Programs:**   

## Lot 5174 1 Load of STEERS

Price: \$ \_\_\_\_\_ Buyer # \_\_\_\_\_

**Hannah Cattle Company (Matt Hannah)**

Linwood, NC (Load in Turnersburg, NC) - 10 miles northeast of Statesville, NC

**Backgrounded, Weaned, BQA Certified**



**Base Weight:** 815 lbs. **Wt. Stop:** 855 lbs. **Variance:** 200 lbs.

**Pickup Date:** June 9-13 **Estimated Head Count** 60

**Slide/Shrink:** No shrink and slide \$10/cwt topside only

**Weigh:** Hauled 40 miles to HBLM, weighed on certified ground scales

**Notice to load:** 48-72 hours **Weaned:** 120+ days

**Colors:** 90% blk/bwf, 4 hd red/rwf, 2 hd ch-x

**Flesh:** Medium

**Muscling:** 95% #1, 5% #1.5

**Frame:** Medium

**Nutrition:** Bunk fed a corn silage TMR with free choice mineral, pasture, and hay.

**Vaccinations:** Vista Once (1x), Vista 5 (1x), Nasalgen 3 (1x), Cavalry 9 (1x), Vision 7 (1x)

**Dewormer:** Safeguard (1x), Dectomax (1x)

**Implants:** Revalor (1x)

**Genetics:** Commercial Angus-based.

**Programs:** No

**Comments:** Broke to bunks and waters. Put together from local producers, triple vaccinated, and backgrounded on pasture being fed a little bit of a silage ration. Steers will be hauled 40 miles and then weighed on the ground. A very good set of steers ready to go to feed.

**MACS Rep:** Jimmy Dagenhart, 704-425-3587

**Programs:**  



## Lot 5175 1 Load of STEERS

Price: \$ \_\_\_\_\_ Buyer # \_\_\_\_\_

### Price Family Farm

Siler City, NC - 30 miles southeast of Greensboro, NC

**Home-Raised, Verified Natural, Backgrounded, Weaned**

**Base Weight:** 840 lbs. **Wt. Stop:** 875 lbs. **Variance:** 125 lbs.

**Pickup Date:** May 26-30 **Estimated Head Count** 58

**Slide/Shrink:** 2% shrink and slide \$10/cwt topside only

**Weigh:** Certified MACS ground scales at farm

**Notice to load:** 48-72 hours **Weaned:** 120+ days

**Colors:** 100% blk/bwf

**Muscling:** 95% #1, 5% #1.5

**Nutrition:** Grazing oats and grass with free choice hay and mineral tubs.

**Vaccinations:** Vista Once (1x), Vista 5 (1x), Ultrabac 7 somubac (2x)

**Dewormer:** Safeguard

**Implants:** None

**Genetics:** 65-85% Angus. Sired by Angus bulls from EBS Farms, Windy Hill, and Jindra and out of Angus-based cows.

**Programs:** BeefTraxx Verified Natural; NHTC; Source & Age; Seller Affidavit

**Comments:** Broke to bunks and waters. BQA Certified. A fancy set of home-raised, verified natural, double vaccinated steers that have been weaned over 120 days. Steers can be EID tagged for verified natural, NHTC, and source-and-age with BeefTraxx. A fancy set of steers with good frame and a lot of growth in them. Have mainly just been on pasture, carrying a medium grass flesh and ready to go to feed.

**MACS Rep:** Marcus Harward, 704-322-0840

**Programs:**



**Flesh:** Medium

**Frame:** Medium

## Lot 5176 0.75 Load of STEERS

Price: \$ \_\_\_\_\_ Buyer # \_\_\_\_\_

### Webb Cattle Co

Troy, NC - 25 miles south of Asheboro, NC

**Backgrounded, Weaned**

**Base Weight:** 850 lbs. **Wt. Stop:** 890 lbs. **Variance:** 200 lbs.

**Pickup Date:** May 26-30 **Estimated Head Count** 44

**Slide/Shrink:** 2% shrink and slide \$10/cwt topside only

**Weigh:** Certified MACS ground scales at farm

**Notice to load:** 48-72 hours **Weaned:** 150+ days

**Colors:** 40 hd blk/bwf, 2 hd ch-x, 2 hd red/rwf (3 w/ flick of ear)

**Muscling:** 90% #1, 10% #1.5

**Nutrition:** Bunk fed 4# of 14% CPC Developer with free choice mineral and on fescue pasture.

**Vaccinations:** Bovi-Shield Gold One Shot (1x), Bovi-Shield Gold 5 (1x), Cavalry 9 (2x), MultiMin (1x)

**Dewormer:** Cydectin, Safeguard

**Implants:** None

**Genetics:** Commercial Angus-based. 3 head with a flick of ear.

**Programs:** No

**Comments:** Broke to bunks and waters. A good partial load of weaned and backgrounded steers that were purchased last fall, double vaccinated, and turned out on grass getting a little feed each day. There are 44 steers at approximately 37,500 lbs. There are 7 heifers at 800 lbs that can also go at \$10/cwt back if buyer wants them.

**MACS Rep:** Marcus Harward, 704-322-0840

**Programs:**



**Flesh:** Medium

**Frame:** Medium, 2-3 hd Large

## Lot 5177 1 Load of STEERS

Price: \$ \_\_\_\_\_ Buyer # \_\_\_\_\_

**Talley Farms Inc**

Stanfield, NC - 15 miles east of Charlotte, NC

**Home-Raised, GAP-4, Natural, Backgrounded, Weaned, BQA Certified**

**Base Weight:** 875 lbs. **Wt. Stop:** 925 lbs. **Variance:** 175 lbs.

**Pickup Date:** May 22-30 **Estimated Head Count** 55

**Slide/Shrink:** 2% shrink and slide \$10/cwt topside only

**Weigh:** Certified ground scales at farm

**Notice to load:** 48 hours **Weaned:** 100+ days

**Colors:** 95% (60 hd) blk/bwf, 3 hd red/rwf

**Muscling:** 95% #1, 5% #1.5

**Nutrition:** Bunk fed a silage-based high roughage TMR with free choice mineral.

**Vaccinations:** Vista Once (1x), Vista 5 (1x), Vision 7 somnus (2x)

**Dewormer:** Safeguard (1x), Ivermec (1x)

**Implants:** None

**Genetics:** Sired by Stabilizer Angus & SimAngus bulls and out of Angus & Stabilizer cows.

**Programs:** GAP-4; Seller Affidavit

**Comments:** Broke to bunks and waters. Fancy set of high-quality, high-performing genetics from a reputational program with black Angus and Stabilizer genetics from Leachman Cattle. Might be a couple with blue eyes. GAP certificate can transfer at no cost to buyer. (GAP#24266; Exp. 2/28/26). Also willing to sign natural affidavits if needed. 63 head to sort from.

**MACS Rep:** Bruce Shankle, 704-694-8686

**Programs:**



**Flesh:** Medium

**Frame:** Medium

## Lot 5178 2 Loads of STEERS

Price: \$ \_\_\_\_\_ Buyer # \_\_\_\_\_

**Windell Talley**

Stanfield, NC - 15 miles east of Charlotte, NC

**Home-Raised, Affidavit Natural, Backgrounded, Weaned**

**Base Weight:** 920 lbs. **Wt. Stop:** 970 lbs. **Variance:** 250 lbs.

**Pickup Date:** May 22-30 **Estimated Head Count** 105

**Slide/Shrink:** 2% shrink and slide \$10/cwt topside only

**Weigh:** On the truck at Talley Feed Mill

**Notice to load:** 48 hours **Weaned:** 100+ days

**Colors:** 114 hd blk/bwf, 1 hd rwf

**Muscling:** 95% #1, 5% #1.5

**Nutrition:** Bunk fed TMR (corn silage, wheat midds, soyhulls) with free choice mineral

**Vaccinations:** Vista Once (1x), Vista 5 (1x), Vision 7 Somnus (2x)

**Dewormer:** Safeguard (1x), Ivermec (1x)

**Implants:** None

**Genetics:** 50% or more Angus. Sired by Leachman genetics (Angus & black Stabilizer) out of Angus & Stabilizer cows

**Programs:** Seller Affidavit

**Comments:** Broke to bunks and waters. A good set of steers that qualify as all-natural and seller will sign affidavits. About 1/2 of the steers were castrated at 10-12 months old. Steers have been weaned for well over 100 days. Will be a few with a blue eye and might be a couple with 2-3" horns. 115 head to sort from.

**MACS Rep:** Bruce Shankle, 704-694-8686

**Programs:**



**Flesh:** Medium

**Frame:** Medium

**Lot 5179 1 Load of HEIFERS**

Price: \$ \_\_\_\_\_ Buyer # \_\_\_\_\_

**5-K Arena (David King)**

Bladenboro, NC - 15 miles east of Lumberton, NC

**Backgrounded, Weaned**



**Base Weight:** 670 lbs. **Wt. Stop:** 710 lbs. **Variance:** 150 lbs.

**Pickup Date:** May 26-30 **Estimated Head Count** 72

**Slide/Shrink:** 2% shrink and slide \$14/cwt topside only

**Weigh:** Hauled 5 miles, weighed on the truck on certified scales

**Notice to load:** 72 hours **Weaned:** 120+ days

**Colors:** 100% blk/bwf

**Flesh:** Medium/Light

**Muscling:** 90% #1, 10% #1.5

**Frame:** Medium

**Nutrition:** Grazing pasture and hay with free choice mineral and protein tubs. No feed

**Vaccinations:** Prior to purchase - Vista Once (1x), Vista 5 (1x), Vision 7 (2x). After purchase - MultiMin (1x).

**Dewormer:** Safeguard, Pour-On

**Implants:** None

**Genetics:** Commercial Angus-based.

**Programs:** No

**Heifers:** Open, not palpated.

**Comments:** Broke to bunks and waters. A good set of grass-flesh, backgrounded heifers that have just been on grass and hay, no feed. Carrying just a light flesh and ready to go on feed. Cattle were vaccinated prior to purchase and have been here for 100+ days and not revaccinated.

**MACS Rep:** Marcus Harward, 704-322-0840

**Programs:**



**Lot 5180 1 Load of HEIFERS**

Price: \$ \_\_\_\_\_ Buyer # \_\_\_\_\_

**Hemric Farms (Van Hemric)**

Ronda, NC - 40 miles northwest of Statesville, NC



**Home-Raised, GAP-4, Verified Natural, NHTC, Backgrounded, Weaned, BQA Cert**

**Base Weight:** 715 lbs. **Wt. Stop:** 755 lbs. **Variance:** 150 lbs.

**Pickup Date:** June 9-13 **Estimated Head Count** 68

**Slide/Shrink:** 2% shrink and slide \$12/cwt topside only

**Weigh:** Certified ground scales at farm

**Notice to load:** 48 hours **Weaned:** 120+ days

**Colors:** 96% blk/bwf, 2 hd ch-x

**Flesh:** Medium

**Muscling:** 95% #1, 5% #1.5

**Frame:** Medium

**Nutrition:** Bunk fed TMR of corn silage, DDGs, hay, and mineral.

**Vaccinations:** Pyramid 5 Presponse (1x), Nasalgen 3 (1x), Triangle 10 (1x), Covexin 8 (2x), Pinkeye (1x)

**Dewormer:** Cydectin (2x)

**Implants:** None

**Genetics:** 50-75% Angus. Sired by purebred Angus bulls out of predominantly Angus-based cows.

**Programs:** GAP-4; BeefTraxx Verified Natural; NHTC; Source & Age; Seller Affidavit

**Heifers:** Vet palpated, guaranteed open

**Comments:** Broke to bunks and waters. A good set of verified natural, GAP-4 heifers that are high percentage Angus, double vaccinated, weaned over 120 days. GAP certificate can transfer at no cost to buyer (GAP#22553; Exp 5/27/25). Heifers are EID tagged for verified natural and NHTC through BeefTraxx. There may be 1 or 2 with a blue eye.

**MACS Rep:** Jimmy Dayenhart, 704-425-3587

**Programs:**





## Lot 5181 1 Load of HEIFERS

Price: \$ \_\_\_\_\_ Buyer # \_\_\_\_\_

**Randy Ratliff**

Marshville, NC - 20 miles southeast of Charlotte, NC

**Backgrounded, Weaned**



**Base Weight:** 730 lbs. **Wt. Stop:** 770 lbs. **Variance:** 150 lbs.

**Pickup Date:** May 26-30 **Estimated Head Count** 66

**Slide/Shrink:** 2% shrink and slide \$12/cwt topside only

**Weigh:** Certified MACS ground scales at farm

**Notice to load:** 48-72 hours **Weaned:** 150+ days

**Colors:** 80 hd - 95% blk/bwf, 2 hd ch-x, 1 hd yellow, 1 hd red (can make all blk/bwf) **Flesh:** Medium

**Muscling:** 95% #1, 5% #1.5 **Frame:** Medium

**Nutrition:** Bunk fed TMR (corn silage, ground corn, cotton seed) with free choice hay and mineral on 10 acre grass lots.

**Vaccinations:** Vista Once (2x), Vista 5 (1x), Cavalry 9 (1x), Endovac (1x)

**Dewormer:** Safeguard (2x), Ivermectin Pour-On (1x) **Implants:** None

**Genetics:** Commercial Angus-based.

**Programs:** No

**Heifers:** Open, not palpated.

**Comments:** Broke to bunks and waters. Purchased last fall, double vaccinated, and backgrounded together for over 150 days. Heifers have not been palpated but should all be open. Can palpate at the farm if given enough notice prior to loading. There are 80 head to sort from, can make it all blk/bwf if needed.

**MACS Rep:** Chuck Doolittle, 704-221-1447

**Programs:**



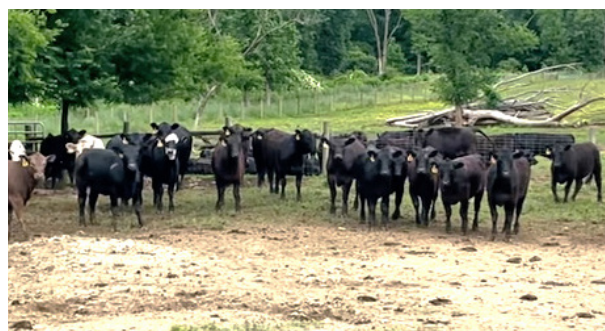
## Lot 5182 2 Loads of HEIFERS

Price: \$ \_\_\_\_\_ Buyer # \_\_\_\_\_

**Donald Chriscoe Farm**

Asheboro, NC - 40 miles south of Greensboro, NC

**Affidavit Natural, Backgrounded, Weaned**



**Base Weight:** 770 lbs. **Wt. Stop:** 805 lbs. **Variance:** 150 lbs.

**Pickup Date:** May 22-30 **Estimated Head Count** 126

**Slide/Shrink:** 2% shrink and slide \$12/cwt topside only

**Weigh:** Certified ground scales at farm

**Notice to load:** 24-48 hours **Weaned:** 120+ days

**Colors:** 84% (106 hd) blk/bwf, 14 hd ch-x, 6 hd red **Flesh:** Medium

**Muscling:** 95% #1, 5% #1.5 **Frame:** Medium

**Nutrition:** Bunk fed haylage and TMR (wet corn gluten, cotton) with access to mineral, hay, and pasture.

**Vaccinations:** Vista 5 (2x), Nuplura (1x), Vision 7 20/20 (1x), Ocuguard Pinkeye (1x)

**Dewormer:** Ivomec Inject. (2x) **Implants:** None

**Genetics:** Commercial Angus-based. Mainly sired by Angus and SimAngus bulls.

**Programs:** Seller Affidavit

**Heifers:** Palpated, guaranteed open

**Comments:** Broke to bunks and waters. Reputational calves purchased from local producers and backgrounded at Chriscoe's for 100+ days. Owner affidavit natural - signed natural affidavits from original producers that will transfer with the cattle.

**MACS Rep:** Marcus Harward, 704-322-0840

**Programs:**



**Lot 5183 1 Load of HEIFERS**

Price: \$ \_\_\_\_\_ Buyer # \_\_\_\_\_

**Talley Farms Inc**  
Stanfield, NC - 15 miles east of Charlotte, NC



**Home-Raised, GAP-4, Natural, Backgrounded, Weaned, BQA Certified**

**Base Weight: 775 lbs. Wt. Stop: 825 lbs. Variance: 175 lbs.**

**Pickup Date:** May 22-30 **Estimated Head Count** 63

**Slide/Shrink:** 2% shrink and slide \$10/cwt topside only

**Weigh:** Certified ground scales at farm

**Notice to load:** 48 hours **Weaned:** 100+ days

**Colors:** 98% (69 hd) blk/bwf, 1 hd rwf

**Flesh:** Medium

**Muscling:** 95% #1, 5% #1.5

**Frame:** Medium

**Nutrition:** Bunk fed a silage-based high roughage TMR with free choice mineral. Was grazing small grain wheat pasture prior to being brought in to feed pens ~45 days ago.

**Vaccinations:** Vista Once (1x), Vista 5 (1x), Vision 7 somnus (2x)

**Dewormer:** Safeguard (1x), Ivermec (1x)

**Implants:** None

**Genetics:** Sired by Stabilizer Angus & SimAngus bulls and out of Angus & Stabilizer cows.

**Programs:** GAP-4; Seller Affidavit

**Heifers:** Vet palpated open.

**Comments:** Broke to bunks and waters. Fancy set of high-quality, high-performing genetics from a reputational program with black Angus and Stabilizer genetics from Leachman Cattle. Heifers have been palpated by Rocky Creek Vets and guaranteed open. Might be a couple with blue eyes. The one RWF calf has 6 inch horns. 70 head to sort from. GAP certificate can transfer at no cost to buyer. (GAP#24266; Exp. 2/28/26). Also willing to sign natural affidavits if needed.

**MACS Rep:** Bruce Shankle, 704-694-8686

**Programs:**



**Lot 5184 1 Load of HEIFERS**

Price: \$ \_\_\_\_\_ Buyer # \_\_\_\_\_

**Hemric Farms (Van Hemric)**  
Ronda, NC - 40 miles northwest of Statesville, NC



**Home-Raised, GAP-4, Verified Natural, NHTC, Backgrounded, Weaned, BQA Cert**

**Base Weight: 800 lbs. Wt. Stop: 840 lbs. Variance: 150 lbs.**

**Pickup Date:** June 2-6 **Estimated Head Count** 61

**Slide/Shrink:** 2% shrink and slide \$10/cwt topside only

**Weigh:** Certified ground scales at farm

**Notice to load:** 48 hours **Weaned:** 120+ days

**Colors:** 95% blk/bwf, 3 hd ch-x

**Flesh:** Medium

**Muscling:** 95% #1, 5% #1.5

**Frame:** Medium

**Nutrition:** Bunk fed TMR of corn silage, DDGs, hay, and mineral.

**Vaccinations:** Pyramid 5 Presponse (1x), Nasalgen 3 (1x), Triangle 10 (1x), Covexin 8 (2x), Pinkeye (1x)

**Dewormer:** Cydectin (2x)

**Implants:** None

**Genetics:** 50-75% Angus. Sired by purebred Angus bulls out of predominantly Angus-based cows.

**Programs:** GAP-4; BeefTraxx Verified Natural; NHTC; Source & Age; Seller Affidavit

**Heifers:** Vet palpated, guaranteed open

**Comments:** Broke to bunks and waters. A good set of verified natural, GAP-4 heifers that are high percentage Angus, double vaccinated, weaned over 120 days. GAP certificate can transfer at no cost to buyer (GAP#22553; Exp 5/27/25). Heifers are EID tagged for verified natural and NHTC through BeefTraxx. There may be 1 or 2 with a blue eye.

**MACS Rep:** Jimmy Dagenhart, 704-425-3587

**Programs:**





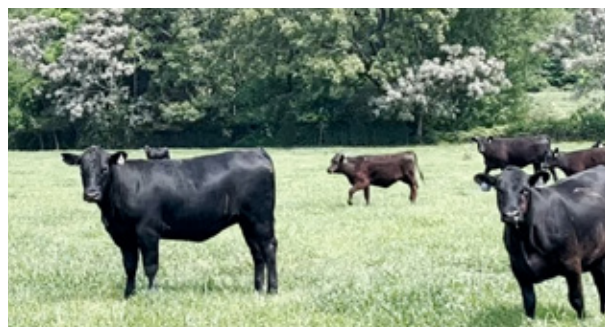
**Lot 5185 1 Load of HEIFERS**

Price: \$ \_\_\_\_\_ Buyer # \_\_\_\_\_

**Stephenson Farm (Ron Stephenson)**

Chester, SC - 45 miles southwest of Charlotte, NC

**Home-Raised, Affidavit Natural, Backgrounded, Weaned**



**Base Weight: 850 lbs. Wt. Stop: 890 lbs. Variance: 200 lbs.**

**Pickup Date:** May 26-30 **Estimated Head Count** 57

**Slide/Shrink:** 2% shrink and slide \$10/cwt topside only

**Weigh:** Hauled 5 miles, weighed on the truck on certified scales

**Notice to load:** 48-72 hours **Weaned:** 150+ days

**Colors:** 90% blk/bwf, 4-5 hd ch-x, 1 hd red

**Flesh:** Medium

**Muscling:** 95% #1, 5% #1.5

**Frame:** Medium

**Nutrition:** No feed - on small grain pasture with free choice mineral and hay.

**Vaccinations:** Bovi-Shield Gold 5 (2x), Presponse (1x), Ultrabac 7 (2x), Pinkeye (1x)

**Dewormer:** Safeguard, Ivomec

**Implants:** None

**Genetics:** 50%+ Angus. Sired by Tokeena Angus bulls and out of predominantly Angus-X cows and some Char-X or red cows.

**Programs:** Seller Affidavit

**Heifers:** Open, not palpated.

**Comments:** Broke to waters. A fancy set of heifers that have been backgrounded on just pasture, no feed. Carrying just a medium flesh, an excellent set of heifers ready to go to feed. Will sign buyer's natural affidavits. May be a couple with blue eyes and scurs or tipped horns.

**MACS Rep:** Chuck Doolittle, 704-221-1447

**Programs:**

*Natural*  
**AFFIDAVIT**

*Select***VAC**



**HARWARD BROTHERS LIVESTOCK MARKET**

2207 Turnersburg Hwy. Statesville, NC

Phone: 704-546-2692

WWW.TURNERSBURGSTOCKYARDNC.COM

**Weekly Sales - Every Monday at 11:30 am**

Take in livestock on Sunday (12 pm - 7 pm) and Monday

3:00 pm - Holstein & Dairy Influenced Feeder Cattle

6:00 pm - Small Animal Sale (Baby Calves, Goats, Sheep)

Marcus Harward • 704-322-0840

Brooke Harward • 704-322-9770

**STANLY COUNTY LIVESTOCK MARKET**

13215 Indian Mound Rd. Norwood, NC

Phone: 704-474-7681

WWW.NORWOODSTOCKYARDNC.COM

**Weekly Sales - Every Wednesday at 10:30 am**

Take in livestock on Tuesday (10 am - 8 pm) and Wednesday

**Graded Feeder Calf Sale Schedule posted online at**  
**www.norwoodfeeder calf.com**

Marcus Harward • 704-322-0840

Catherine Edwards • 704-550-7920

Will Edwards • 919-449-8064

*Watch the sales live  
every week!*

**CATCHING, HAULING, AND CATTLE WORK SERVICES AVAILABLE**



**MAC-VAC FEEDER CALVES**

A marketing program available at both sale locations for vaccinated steers and heifers. Calves that meet vaccination requirements and have the sale tag in their ear will sell in the MAC-VAC portion of the sale at the beginning of the feeder calf sale each week. For more information, please visit [www.norwoodfeeder calf.com](http://www.norwoodfeeder calf.com) or contact any of the numbers listed here.

**Catching, hauling, and cattle work services:**

For hauling services, contact Marcus at 704-322-0840.

If you need help working your cattle, contact Marcus Harward at 704-322-0840 or Chuck Doolittle at 704-221-1447 for more information.



# MID-ATLANTIC CATTLE SALES

[WWW.MACSVIDEO.COM](http://WWW.MACSVIDEO.COM)



## UPCOMING SALES

June 3  
June 17  
July 8  
July 22

August 5  
August 19  
September 2  
September 16

*Our motto - Working hard for you today and every day!*





To view the sale or bid online, visit [www.DVAuction.com](http://www.DVAuction.com). Find the "Mid-Atlantic Cattle Sales (Richfield, NC)" sale and click on "Details." From this page you can view the catalog, videos, or log in to watch the sale. If you have an account, log in and view the sale. If you do not, you must create an account under the "Create New Account" tab in the upper left hand corner of the screen. You will need to confirm this account through your e-mail.

You DO NOT have to be approved for a buyer's number just to watch the sale but you will still need to create an account with DVAuction.



Mid-Atlantic Cattle Sales, LLC  
28978 Misenheimer Rd. Richfield, NC 28137  
[info@macsvideo.com](mailto:info@macsvideo.com) • [www.MACSvideo.com](http://www.MACSvideo.com)

*\*Bonded through USDA Packers & Stockyards*

# SALE TERMS AND CONDITIONS - PAGE 1 OF 2

## MID-ATLANTIC CATTLE SALES, LLC

1. Each bidder must be pre-registered and have a Buyer Number to participate in the auction. To register for the auction call 704-322-9770, 704-322-0840, or register through DV Auction. By participating in the auction, the Buyer expressly agrees to adhere to these Terms and Conditions and to the provisions set forth in the Livestock Purchase Agreement sent after the auction. All cattle being offered for sale are under standard Contracts for Sale. All cattle are purchased under standard Contracts for Purchase by the Buyers.
2. The cattle offered for sale are indicated on the sale sheets or online sale description as described to the MACS representatives by the owner. They are described by lot numbers, seller, location of the cattle, numbers of head, estimated weight, management practices, delivery date, conditions of sale and delivery, and verified programs. Representatives for each load are listed under each respective lot. Every effort has been made to assure the correctness of this information but all announcements from the auctioneer or official auction staff prior to or during the sale shall take precedence over printed matter herein.
3. Auction bids will be taken as voice bids by telephone and in person or online bids through DV Auction. Bids are asked with each lot of cattle and will be sold to the highest bidder on the basis of estimated weight. Seller reserves the right to "no sale" the load lot(s) of their cattle at the time the highest bid is made as long as the "no sale" announcement is made prior to the next lot being sold. Any departure from this procedure will be announced and all announcements made from the auctioneer or official auction staff will take precedence over printed matter herein.
4. The Auctioneer reserves the right to reject any and all bids. Auctioneer will settle all disputed bids. If a dispute arises between two or more bidders, the Auctioneer may immediately put the lot up for sale again and resell to the highest bidder. The decision of the Auctioneer shall be final and absolute.
5. One full load of stocker or feeder cattle will be contracted for approximately 48,000 lbs. and the respective head count at the base weight at the full truckload weight. No freight adjustment will be given if the average weight at delivery is under the base weight and the head count delivered is within 95% of the contracted head count. Mid-Atlantic Cattle Sales and its representatives will act as agents only in the sale of lots of cattle. As the marketing agency we cannot guarantee a minimum or maximum amount of shrink on any load. Any weight guarantees in regard to shrink must be given by Seller. Mid-Atlantic Cattle Sales cannot guarantee off truck weights.
6. Cattle that are picked up after the stated delivery dates will be subject to a 2# per head per day increase on the base weight and any weight stops for each day late after the last stated delivery date. Any deviation from this 2# per head per day will be posted in the catalog and announced on sale day.
7. Most loads have weight stops at 25-50 lbs. over the base weight. The individual weight stops are posted on each lot. If a weight stop is listed, cattle will slide after shrink up to the posted weight stop and be sold on a total net weight at the posted weight stop. Any pounds after shrink over the weight stop will not be billed to the buyer or paid to the seller unless other arrangements have been made in writing.
8. All cattle will be sold on a sliding scale as listed on each load. The "price slide" will go into effect when the average net weight of the live cattle is over the base weight the cattle are sold at. This will go into effect starting at 1 pound over the base weight.  
**Slide Example:** The cattle were sold at a base weight of 700 lbs with a \$5/cwt topside slide for \$150/cwt and at delivery weighed 725 lbs after shrink. The cattle would slide \$1.25 for a new price of \$148.75 at 725 lbs.  
**[Slide (\$5/cwt) X Pounds Over (25) = \$1.25/cwt]** Also can be shown as  $[\$5 / 100 \times 25 = \$1.25]$
9. On split loads the heifer price will be \$\_\_\_\_/cwt (as stated in the lot information) back of the original price of the steers. The steers will be based at their purchase price and base weight and the heifers will be based at their purchase price and base weight. At delivery, slides and weight stops will be calculated separately on each group.

*Updated March 28, 2023  
Updated July 1, 2024*



# SALE TERMS AND CONDITIONS - PAGE 2 OF 2

## MID-ATLANTIC CATTLE SALES, LLC

- 10.** The Buyer is responsible for all arrangements and regulatory requirements with respect to the transportation of the livestock and the Buyer is responsible for sending trucks to adequately load the number of head and/or the total weight contracted in order to legally transport them to their final destination. Cattle sold will be sorted and delivered to the stated weigh point by the Seller and weighed on a certified scale. Buyer will receive the cattle at point of weighing under conditions as stated with respect to each lot. Buyer will take ownership of the cattle at the point of loading.
- 11.** Health entry requirements for the state of entry are the responsibility of the Buyer. The Seller will furnish any health certificates required for the state of origin and Federal Law at the request of the buyer. If additional health certificates, documentation or tests are required for shipment to the Buyer's destination, it shall be at the Buyer's request and expense.
- 12.** Any heifer that is sold as guaranteed open and is determined to be bred by the buyer will receive a \$200 per bred heifer refund given appropriate documentation is provided within 90 days (updated) of the cattle being delivered. Documentation must include lot information, heifer identification, and veterinarian documentation. **UPDATE: Effective July 1, 2024 all heifer loads, unless explicitly stated in the catalog, are sold with a 90-day bred heifer refund guarantee. The catalog will explicitly state if heifers have been checked for pregnancy prior to delivery so that the buyer can plan accordingly.**
- 13.** Payment by Buyer is due and payable in accordance with USDA P&S prompt pay policy upon delivery of the cattle and at such times as the value of the cattle is determined based on weight (subject to condition), price (subject to condition), and any other conditions stated at time of sale. Payment must be sent to Mid-Atlantic Cattle Sales within 1 day after the cattle are received by the Buyer. We request that all payments be sent by Wire Transfer, ACH, or overnight delivery of a check via FedEx or UPS. Payment sent via the U.S. Postal Service (1st Class or Priority Mail) are expected to be received within 7 business days of delivery. Any fees incurred for sending payment will be at the Buyer's expense.
- 14.** Mid-Atlantic Cattle Sales does not warrant the harvest date on source and age verified cattle and cannot guarantee back verification on any program requiring signed affidavits or 3rd party verification. Mid-Atlantic Cattle Sales will make all efforts to ensure verifications are met, but it is the Buyer's responsibility to verify all claims of the Seller to fit specific programs prior to purchase.
- 15.** There are no implied warranties of merchantability or fitness for a particular purpose on any livestock sold. Seller does not warrant that the livestock are free from any latent defect, condition, sickness, or disease. Seller does not assume responsibility for any loss after the livestock are delivered, which results from any latent defect, condition, sickness, or disease.



Marcus Harward: 704-322-0840

Brooke Harward: 704-322-9770

[info@macsvideo.com](mailto:info@macsvideo.com)

[www.MACSvideo.com](http://www.MACSvideo.com)

28978 Misenheimer Rd • Richfield, NC 28137