



**MID-ATLANTIC**  
CATTLE SALES

*A Family Owned and Operated  
Livestock Video Auction*

**WWW.MACSVIDEO.COM**

---

**JANUARY 9, 2019**

Start Time: 9:30 AM est. / 8:30 AM cst.

Marcus Harward: 704-322-0840

Office: 704-463-5828

# Video Sale INFORMATION

Video sales are a marketing mechanism that have grown in popularity due to the opportunities they present to producers who deal in large numbers of stocker and feeder cattle. Cattle are generally marketed in trailer-load lots weighing approximately 48,500 pounds; however, we can also sell "partial loads" if there are not enough cattle to make a full trailer-load. Before the sale, a representative from MACS goes to the farm to record video of the cattle while also documenting important information about the cattle including breed, frame, muscling, and fleshing as well as health and nutrition programs. *The following catalog provides this information from our consignors and contractors to assist with marketing the consigned cattle. If you have any questions regarding the stated information, please contact a MACS representative listed throughout this catalog.*

## SALE DATE & TIME:

**January 9, 2019 - Wednesday**

**9:30 am est. | 8:30 am cst.**

## CONTACT:

Office .....704-463-5828  
Marcus Harward .....704-322-0840  
Bruce Shankle .....704-694-8686  
Brooke Harward .....704-322-9770  
macsvideoauction@gmail.com

## WEBSITES:

**[www.MACSVideo.com](http://www.MACSVideo.com)**

View catalog, videos, and additional updates online on our website.

**[www.YouTube.com/MACSVideoauction](http://www.YouTube.com/MACSVideoauction)**

All videos of sale cattle are posted directly on our YouTube channel listed above.

## ANNOUNCEMENTS:

Announcements made on sale day will take precedence over what is stated in the catalog.

## TERMS & CONDITIONS:

- Most loads have weight stops at 25-50 lbs. over the base weight. The individual weight stops are posted on each lot.
- Cattle that are picked up after the stated delivery dates will be subject to a 3# per day increase on the base weight and any weight stops for each day late after the last stated delivery date.
- Payment by Buyer is due to Mid-Atlantic Cattle Sales at such times as the value of the cattle is determined based on weight (subject to condition), price (subject to condition), and any other conditions stated at time of sale. All payment due will be in accordance with USDA P & S prompt pay policy.



## Bidding Options

*We want to offer you the best opportunities we can to participate in our sales each month. Below are three options for bidding on the sale.*

### 1. Conference Call / Tel-o-Auction

The most common resource used is our nationwide tel-o-auction. Contact Marcus or Brooke prior to the sale to receive a buyer's number. After 9:15 est. on sale day, you can call the auction number to listen and bid on the sale. *Please keep background noise to a minimum as we will have multiple people on the line.*

**CALL-IN NUMBER: 1-866-906-9888**

**PASSCODE: 9461720 #**

*When asked for your name, you may state your name OR simply press the # sign to enter the call.*

*To mute your phone, press \*6. To un-mute, press \*6 again.*



### 2. Internet Viewing & Bidding

To view the sale or bid online, visit [www.DVAuction.com](http://www.DVAuction.com). Find the "Mid-Atlantic Cattle Sales (Richfield, NC)" sale and click on "Details." From this page you can view the catalog, videos, or log in to watch the sale. If you have an account, log in and view the sale. If you do not, you must create an account under the "Create New Account" tab in the upper left hand corner of the screen. You will need to confirm this account through your e-mail. It is best to do this at least a day before the sale.

**You DO NOT have to be approved just to watch the sale but you will still need to create an account with DVAuction.**

***To register for a buyer's number, call Brooke at 704-322-9770 prior to the sale to be approved to bid online.***

### 3. Absentee Bidding

For people who can not view the sale at sale time, we have independent contractors who can assist you with absentee bidding. Contact Marcus at 704-322-0840 for more information.

## MID-ATLANTIC CATTLE SALES

28978 Misenheimer Rd • Richfield, NC 28137

Office: 704-463-5828 • Fax: 704-463-5861

macsvideoauction@gmail.com

*Family owned and operated since 2010*



# TABLE OF CONTENTS

## January 9, 2019

Video Sale Information	Page 2
Table of Contents	Page 3

Lot 9001	Partial Load	Steers	600 lbs.	Dixon Family Farms	Page 4
Lot 9002	1 Load	Steers	750 lbs.	Donald Chriscoe Farm	Page 4
Lot 9003	1 Load	Steers	800 lbs.	Rocking H Cattle Co. <b>**All-Natural**</b>	Page 5
Lot 9004	1 Load	Steers	825 lbs.	Hannah Cattle Company	Page 5
Lot 9005	2 Loads	Steers	845 lbs.	Talley Farms, Inc <b>**All-Natural**</b>	Page 6
Lot 9006	1 Load	Steers	850 lbs.	Windell Talley	Page 6
Lot 9007	3 Loads	Steers	865 lbs.	Oakwood Farms	Page 7
Lot 9008	1 Load	Heifers	720 lbs.	McDannald Cattle Co. <b>**All-Natural**</b>	Page 7
Lot 9009	1 Load	Heifers	725 lbs.	Donald Chriscoe Farm	Page 8
Lot 9010	1 Load	Heifers	750 lbs.	Satterwhite Farms LLC	Page 8
Lot 9011	1 Load	Heifers	800 lbs.	McDannald Cattle Co. <b>**All-Natural**</b>	Page 9
Lot 9012	1 S. Load	Steers Heifers	470 lbs. 480 lbs.	Nelson Talley <b>**All-Natural**</b>	Page 9
Lot 9013	1 S. Load	Steers Heifers	680 lbs. 670 lbs.	Nelson Talley <b>**All-Natural**</b>	Page 10
Lot 9014	1 S. Load	Steers Heifers	750 lbs. 720 lbs.	Fields & Smith Farms <b>**All-Natural**</b>	Page 10
Lot 9015	1 S. Load	Steers Heifers	775 lbs. 700 lbs.	Willow Springs Farm <b>**All-Natural**</b>	Page 11

Upcoming Video Sale Schedule	Page 11
Harward Sisters Select Bull & Female Sale	Page 12

Most loads have weight stops at 25-50 lbs. over the base weight.  
The individual weight stops are posted on each lot. →



Cattle that are picked up after the stated delivery dates will be subject to a 3# per day increase on the base weight and any weight stops for each day late after the last stated delivery date.

*“Therefore, if anyone is in Christ, he is a new creation.  
The old has passed away; behold, the new has come.”*  
**2 Corinthians 5:17 (ESV)**

## Mid-Atlantic Cattle Sales - January 9, 2019

**LOT 9001 STEERS 55 HEAD - Partial Load** Price: \$ \_\_\_\_\_ Buyer # \_\_\_\_\_

**Avg. Wt:** 600 lbs. **Variance:** 150 lbs.

**Contractor:** Marcus Harward 704-322-0840



### Dixon Family Farms

Graham, NC

20 miles east of Greensboro, NC



<b>Blk/BWF</b>	100%	<b>Frame</b>	
<b>Ch-X</b>	-	<b>Medium</b>	100%
<b>Red</b>	-	<b>Large</b>	-
<b>#1</b>	85%	<b>Flesh</b>	
<b>#1<sup>1/2</sup></b>	15%	<b>Medium</b>	100%



**Delivery Date:** January 11 - 18

**Shrink:** 2%

**Slide:** \$6/CWT topside only

**Conditions:** Hauled 5 miles and weighed on the truck on Certified Scales. **Need a 48 hour notice to load.**

**Nutrition:** A little silage with grain on top with pasture grass, hay, and free choice minerals.

**Vaccinations:** Bovi-Shield Gold One Shot (1x), Bovi-Shield Gold 5 (1x), Ultrabac 7 (2x)

**Implants:** None

**Dewormer:** Ivomec Injectable

**COMMENTS** Backgrounded, Weaned.



A very good set of backgrounded, grass-flesh steers. Calves were purchased as 3 weights and backgrounded at the farm. They were all knife cut and double vaccinated. They have been running on grass with just a little silage and grain. Calves would work great to go to a grazing program or go to feed. A fancy set of 55 steers at about 33,000 lbs.

**LOT 9002 STEERS 1 LOAD**

Price: \$ \_\_\_\_\_ Buyer # \_\_\_\_\_

**Avg. Wt:** 750 lbs. **Variance:** 125 lbs.

**Contractor:** Marcus Harward 704-322-0840

### Donald Chriscoe Farm

Asheboro, NC

40 miles south of Greensboro, NC



<b>Blk/BWF</b>	92%	<b>Frame</b>	
<b>Ch-X</b>	4%	<b>Medium</b>	100%
<b>Red</b>	4%	<b>Large</b>	-
<b>#1</b>	95%	<b>Flesh</b>	
<b>#1<sup>1/2</sup></b>	5%	<b>Medium</b>	100%



**Delivery Date:** ASAP by January 18

**Shrink:** 2%

**Slide:** \$5/CWT topside only

**Conditions:** Cattle will be weighed on the ground on Certified Scales. **Need a 24 hour notice to load.**

**Nutrition:** Haylage and DDG TMR with access to mineral, grass, and hay.

**Vaccinations:** Bovi-Shield Gold 5 (2x), Vision 7 20/20 (1x), Nuplura (1x), Occuguard Pinkeye

**Implants:** None

**Dewormer:** Ivomec Inject (2x)

**COMMENTS** Backgrounded, Weaned, BQA Certified.



A very good set of reputational yearling steers from Donald Chriscoe. They have been weaned for over 100 days, are bunk broke, broke to Ritchie waters, and under a good health program. They were purchased as 4-weights from local producers, mainly using high-quality Angus bulls on Angus-X cows. An excellent set of growthy type steers ready to go to feed.

Page -4- Cattle that are picked up after the stated delivery dates will be subject to a 3# per day increase on the base weight and any weight stops for each day late after the last stated delivery date.



# Mid-Atlantic Cattle Sales - January 9, 2019

**LOT 9003 STEERS 1 LOAD**  
**Avg. Wt:** 800 lbs. **Variance:** 150 lbs.  
**Contractor:** Marcus Harward 704-322-0840

Price: \$ \_\_\_\_\_ Buyer # \_\_\_\_\_

**AllNATURAL**

**PrimeVAC**  
BY MERCK ANIMAL HEALTH

**Rocking H Cattle Company**

Gold Hill, NC

40 miles northwest of Charlotte, NC



<b>Blk/BWF</b>	98%	<b>Frame</b>	
<b>Ch-X</b>	2%	<b>Medium</b>	100%
<b>Red</b>	-	<b>Large</b>	-
<b>#1</b>	95%	<b>Flesh</b>	
<b>#1<sup>1/2</sup></b>	5%	<b>Medium</b>	100%



**Delivery Date:** January 21 - 25

**Shrink:** 2%

**Slide:** \$5/CWT topside only

**Conditions:** Cattle will be weighed on the truck on Certified Scales. **Need a 48 hour notice to load.**

**Nutrition:** TMR with free choice mineral, pasture, and hay.

**Vaccinations:** Vista Once (1x), Vista 5 (1x), Vision 7 w/somnus (2x)

**Implants:** None

**Dewormer:** LongRange

**COMMENTS** *Home-Raised, All-Natural, Backgrounded, Weaned, BQA Certified.*



A good set of home-raised, all-natural steers from Rocking H Cattle. Steers are all primarily Angus-based with 1/4 continental or less. They are sired by Angus bulls, mainly from EBS Farms genetics, and out of Angus-continental cross cows. They have been weaned for 75+ days and are double vaccinated. *GAP Certified - certificate will transfer with cattle.*



**LOT 9004 STEERS 1 LOAD**  
**Avg. Wt:** 825 lbs. **Variance:** 125 lbs.  
**Contractor:** Marcus Harward 704-322-0840

Price: \$ \_\_\_\_\_ Buyer # \_\_\_\_\_

**PrimeVAC**  
BY MERCK ANIMAL HEALTH

**Hannah Cattle Company - Matt Hannah**

Mocksville, NC

25 miles northeast of Statesville, NC



<b>Blk/BWF</b>	90%	<b>Frame</b>	
<b>Ch-X</b>	9%	<b>Medium</b>	100%
<b>Red</b>	1%	<b>Large</b>	-
<b>#1</b>	95%	<b>Flesh</b>	
<b>#1<sup>1/2</sup></b>	5%	<b>Medium</b>	100%



**Delivery Date:** January 28 - 31

**Shrink:** 2%

**Slide:** \$5/CWT topside only

**Conditions:** Hauled 10 miles and weighed on the truck on Certified Scales. **Need a 48 hour notice to load.**

**Nutrition:** 10# per head per day of TM with pasture grass and hay.

**Vaccinations:** Vista Once (1x), Vista 5 (1x), Cavalry 9 (2x)

**Implants:** Revalor G

**Dewormer:** Safeguard (1x), Cydectin (1x)

**COMMENTS** *Backgrounded, Weaned, BQA Certified.*



A fancy set of backgrounded, reputational steers from Hannah Cattle Co. There are 80 head to sort a load out of. They were brought in as 5-weights and have been backgrounded at the farm for 60+ days. They have been double vaccinated under a good vaccination program. They are carrying just a grass flesh and getting just a little feed each day. A very good set of steers ready to feed.

*Cattle that are picked up after the stated delivery dates will be subject to a 3# per day increase on the base weight and any weight stops for each day late after the last stated delivery date.*

## Mid-Atlantic Cattle Sales - January 9, 2019

**LOT 9005 STEERS 2 LOADS**  
**Avg. Wt:** 845 lbs. **Variance:** 150 lbs.  
**Contractor:** Bruce Shankle 704-694-8686

**Price:** \$ \_\_\_\_\_ **Buyer #** \_\_\_\_\_

**allNATURAL**

**PrimeVAC**  
BY MERCK ANIMAL HEALTH

**Talley Farms, Inc**  
 Stanfield, NC  
 15 miles east of I-485 in Charlotte, NC



<b>Blk/BWF</b>	100%	<b>Frame</b>	
<b>Ch-X</b>	-	<b>Medium</b>	100%
<b>Red</b>	-	<b>Large</b>	-
<b>#1</b>	90%	<b>Flesh</b>	
<b>#1<sup>1/2</sup></b>	10%	<b>Medium</b>	100%



**Delivery Date:** January 14 - 18 **Shrink:** 2% **Slide:** \$5/CWT topside only  
**Conditions:** Cattle will be weighed on the truck at the feed mill on Certified Scales.  
**Nutrition:** Corn silage TMR soyhulls and what midds with free choice minerals and hay.  
**Vaccinations:** Vista Once (1x), Vista 5 (1x), Vision 7 (1x), Vision 7 w/somnus (1x)  
**Implants:** None **Dewormer:** LongRange (1x), Safeguard (1x)

**COMMENTS** *Home-Raised, All-Natural, GAP Certified, Backgrounded, Weaned, BQA Certified.*



Two fancy loads of all black/BWF steers from Talley Farms. They are all-natural, weaned, and backgrounded at the farm for 90+ days. They are bunk broke. Calves are all home-raised and are sired by high-performing Angus and Leachman Stabilizer bulls. These calves have been double vaccinated and are GAP Certified. An excellent set of steers ready to go to feed.



**LOT 9006 STEERS 1 LOAD**  
**Avg. Wt:** 850 lbs. **Variance:** 125 lbs.  
**Contractor:** Bruce Shankle 704-694-8686

**Price:** \$ \_\_\_\_\_ **Buyer #** \_\_\_\_\_

**PrimeVAC**  
BY MERCK ANIMAL HEALTH

**Windell Talley**  
 Stanfield, NC  
 15 miles east of I-485 in Charlotte, NC



<b>Blk/BWF</b>	95%	<b>Frame</b>	
<b>Ch-X</b>	1 hd.	<b>Medium</b>	100%
<b>Red</b>	2 hd.	<b>Large</b>	-
<b>#1</b>	95%	<b>Flesh</b>	
<b>#1<sup>1/2</sup></b>	5%	<b>Medium +</b>	100%



**Delivery Date:** January 14 - 18 **Shrink:** 2% **Slide:** \$4/CWT topside only  
**Conditions:** Cattle will be weighed on the truck at the feed mill on Certified Scales.  
**Nutrition:** Corn silage TMR soyhulls and what midds with free choice minerals and hay.  
**Vaccinations:** Vista Once (2x), Vision 7 (2x)  
**Implants:** Ralgro **Dewormer:** LongRange

**COMMENTS** *Home-Raised, Backgrounded, Weaned, BQA Certified.*



A very good set of steers. They are 50% home-raised and 50% of them were bought at the Norwood feeder calf sales. They have been weaned and backgrounded for 120+ days. They are also bunk broke. Calves are sired by high-performing Angus & Leachman Stabilizer bulls. A fancy set of reputational steers ready to go to feed.



# Mid-Atlantic Cattle Sales - January 9, 2019

**LOT 9007 STEERS 3 LOADS**

Price: \$ \_\_\_\_\_ Buyer # \_\_\_\_\_

**Avg. Wt:** 865 lbs. **Variance:** 150 lbs.

**Contractor:** Marcus Harward 704-322-0840

**Oakwood Farms - Thomas Lawrence**  
Asheboro, NC  
40 miles south of Greensboro, NC



<b>Blk/BWF</b>	100%	<b>Frame</b>	
<b>Ch-X</b>	-	<b>Medium</b>	100%
<b>Red</b>	-	<b>Large</b>	-
<b>#1</b>	95%	<b>Flesh</b>	
<b>#1<sup>1/2</sup></b>	5%	<b>Medium</b>	100%

**Delivery Date:** ASAP by January 18

**Shrink:** 2%

**Slide:** \$5/CWT topside only

**Conditions:** Cattle will be weighed on the ground on Certified Scales. **Need a 48 hour notice to load.**

**Nutrition:** TMR of corn silage with grain and soy bean meal.

**Vaccinations:** Bovi-Shield Gold One Shot (1x), Bovi-Shield One Shot or Vista Once (1x), Vision 7/Ultrabac 7 (2x)

**Implants:** None

**Dewormer:** Dectomax

**COMMENTS** Backgrounded, Weaned, BQA Certified.



A very good set of backgrounded steers. All calves were purchased at the Norwood Feeder Calf Sales as "Angus-based M-1s." They were double vaccinated (MLV-2x and blackleg-2x) prior to purchase and then revaccinated with Bovi-Shield Gold One Shot. They are bunk broke and broke to waters. A big set of growthy steers being fed in a barn with access to outside pens. A very good set of 3 loads of northern-type steers ready to go to feed.

**LOT 9008 HEIFERS 1 LOAD - 70 HEAD**

Price: \$ \_\_\_\_\_ Buyer # \_\_\_\_\_

**Avg. Wt:** 720 lbs. **Variance:** 100 lbs.

**Contractor:** David McDannald 864-360-0481

**McDannald Cattle Company**

Fountain Inn, SC  
20 miles southeast of Greenville, SC



**AllNATURAL**

**PrimeVAC**  
BY MERCK ANIMAL HEALTH



<b>Blk/BWF</b>	66 hd.	<b>Frame</b>	
<b>Ch-X</b>	4 hd.	<b>Medium</b>	100%
<b>Red</b>	-	<b>Large</b>	-
<b>#1</b>	100%	<b>Flesh</b>	
<b>#1<sup>1/2</sup></b>	-	<b>Medium</b>	100%

**Delivery Date:** January 10 - 18

**Shrink:** 2%

**Slide:** \$5/CWT topside only

**Conditions:** Weighed on the ground on Certified Scales. **Need a 48 hour notice to load.**

**Nutrition:** 6-7# per head per day of 14% CPC Developer with free choice mineral, pasture, and hay.

**Vaccinations:** Vista Once SQ (1x), Vista 5 SQ (1x), Vision 7 (2x)

**Implants:** None

**Dewormer:** Safeguard (1x), Dectomax Inject. (1x)

**COMMENTS** Home-Raised, All-Natural, Backgrounded, Weaned, Guaranteed Open, BQA Certified.



A fancy set of all-natural heifers that are all sired by Angus and SimAngus bulls. They have been double vaccinated and weaned for 100 days, backgrounded at the farm. They are bunk broke and getting just a little feed each day. **GAP-4 Certified through Pineland Farms.** An excellent set of all-natural, backgrounded heifers ready to go to feed.



Cattle that are picked up after the stated delivery dates will be subject to a 3# per day increase on the base weight and any weight stops for each day late after the last stated delivery date.

## Mid-Atlantic Cattle Sales - January 9, 2019

**LOT 9009 HEIFERS 1 LOAD**

Price: \$ \_\_\_\_\_ Buyer # \_\_\_\_\_

**Avg. Wt:** 725 lbs. **Variance:** 125 lbs.

**Contractor:** Marcus Harward 704-322-0840

**Donald Chriscoe Farm**

Asheboro, NC

40 miles south of Greensboro, NC



<b>Blk/BWF</b>	94%	<b>Frame</b>	
<b>Ch-X</b>	4%.	<b>Medium</b>	95%
<b>Red</b>	2%	<b>Large</b>	5%
<b>#1</b>	95%	<b>Flesh</b>	
<b>#1<sup>1/2</sup></b>	5%	<b>Medium</b>	100%



**Delivery Date:** ASAP by January 18

**Shrink:** 2% **Slide:** \$5/CWT topside only

**Conditions:** Cattle will be weighed on the ground on Certified Scales. **Need a 24 hour notice to load.**

**Nutrition:** Haylage and DDG TMR with access to mineral, grass, and hay.

**Vaccinations:** Bovi-Shield Gold 5 (2x), Vision 7 20/20 (1x), Nuplura (1x), Occuguard Pinkeye

**Implants:** None

**Dewormer:** Ivomec Inject (2x)

**COMMENTS** *Backgrounded, Weaned, Guaranteed Open, BQA Certified.*



A good set of backgrounded, northern-type heifers from Donald Chriscoe. Heifers are weaned and are under a good health program. They were purchased as 4-weights from local farmers and are Angus-based, sired by mainly Angus bulls. Heifers are bunk broke and broke to Ritchie waters. They will be preg-checked and guaranteed open. A fancy set of heifers ready to go to feed.

**LOT 9010 HEIFERS 1 LOAD**

Price: \$ \_\_\_\_\_ Buyer # \_\_\_\_\_

**Avg. Wt:** 750 lbs. **Variance:** 150 lbs.

**Contractor:** David Landreth 864-444-8214

**Satterwhite Farms LLC - Wayne Satterwhite**

Newberry, SC

40 miles northwest of Columbia, SC



<b>Blk/BWF</b>	70 hd.	<b>Frame</b>	
<b>Ch-X</b>	1 hd.	<b>Medium</b>	100%
<b>Red</b>	7 hd.	<b>Large</b>	-
<b>RWF</b>	2 hd.	<b>Flesh</b>	
<b>#1</b>	95%	<b>Medium</b>	100%
<b>#1<sup>1/2</sup></b>	5%		



**PrimeVAC™**  
BY MERCK ANIMAL HEALTH

**Delivery Date:** January 14 - 18

**Shrink:** 2% **Slide:** \$5/CWT topside only

**Conditions:** Weighed on the ground on Certified Scales. **Need a 48 hour notice to load.**

**Nutrition:** TMR sorghum silage, gluten, soyhulls, & soybean meal with free choice mineral, pasture, & hay

**Vaccinations:** Vista 5 L5 (2x), Vision 7 w/somnus (2x)

**Implants:** None

**Dewormer:** Cydectin (2x)

**COMMENTS** *Home-Raised, Backgrounded, Weaned, Guaranteed Open, BQA Certified, EID Tagged.*



A fancy set of heifers from Satterwhite Farms that are home-raised and have been backgrounded at the farm. They have been weaned for 80+ days at time of shipping. They are eating silage and on pasture and are bunk broke. Cattle have EID tags. There are 80 head to sort a load out of and should be at least 90% black/BWF. A very docile set of heifers that are ready to go to feed.

Page -8- *Cattle that are picked up after the stated delivery dates will be subject to a 3# per day increase on the base weight and any weight stops for each day late after the last stated delivery date.*



LOT 9011 HEIFERS 1 LOAD - 67 HEAD Price: \$ \_\_\_\_\_ Buyer # \_\_\_\_\_

Avg. Wt: 800 lbs. Variance: 100 lbs.

Contractor: David McDannald 864-360-0481

All NATURAL

PrimeVAC<sup>™</sup>  
BY MERCK ANIMAL HEALTH

McDannald Cattle Company

Fountain Inn, SC

20 miles southeast of Greenville, SC



Blk/BWF	63 hd.	<b>Frame</b>	
Ch-X	4 hd.	Medium	100%
Red	-	Large	-
#1	100%	<b>Flesh</b>	
#1 <sup>1/2</sup>	-	Medium	100%



Delivery Date: January 10 - 18

Shrink: 2%

Slide: \$5/CWT topside only

Conditions: Weighed on the ground on Certified Scales. Need a 48 hour notice to load.

Nutrition: 6-7# per head per day of 14% CPC Developer with free choice mineral, pasture, and hay.

Vaccinations: Vista Once SQ (1x), Vista 5 SQ (1x), Vision 7 (2x)

Implants: None

Dewormer: Safeguard (1x), Dectomax Inject. (1x)

COMMENTS Home-Raised, All-Natural, Backgrounded, Weaned, Guaranteed Open, BQA Certified.



Another fancy set of all-natural heifers that are all sired by Angus and SimAngus bulls. They have been double vaccinated and weaned for 100 days, backgrounded at the farm. They are bunk broke and getting just a little feed each day. GAP-4 Certified through Pineland Farms. An excellent set of all-natural, backgrounded heifers ready to go to feed.



LOT 9012 STRS/HFRS 1 SPLIT LOAD

Price: \$ \_\_\_\_\_ Buyer # \_\_\_\_\_

Avg. Wt: 49 Strs: 470 lbs. Variance: 180 lbs.

53 Hfrs: 480 lbs. Variance: 180 lbs.

Contractor: Bruce Shankle 704-694-8686

Nelson Talley

Stanfield, NC

15 miles east of I-485 in Charlotte, NC



Blk/BWF	100%	<b>Frame</b>	
Char-X	-	Medium	80%
Red	-	Small	20%
#1	70%	<b>Flesh</b>	
#1 <sup>1/2</sup>	30%	Medium	100%



Heifers sell \$.10 back.

Delivery Date: January 14 - 18

Shrink: 2%

Slide: \$8/CWT topside only

Conditions: Cattle will be weighed on the truck at the feed mill on Certified Scales.

Nutrition: Silage TMR and haylage with free choice minerals.

Vaccinations: Vista Once (1x), ViraShield 6 L5 (1x), Vision 7 (1x)

Implants: None

Dewormer: LongRange

COMMENTS Home-Raised, All-Natural, Pre-Conditioned, Weaned, BQA Certified.



A split load of home-raised, all-natural steers and heifers. Cattle are all Angus-sired and Angus-X cows and are 100% black or BWF. They have been double vaccinated and were not implanted. They qualify as all-natural, but not GAP Certified. A good load of lightweight cattle that could work to go to grazing or feed.

Cattle that are picked up after the stated delivery dates will be subject to a 3# per day increase on the base weight and any weight stops for each day late after the last stated delivery date.

## Mid-Atlantic Cattle Sales - January 9, 2019

**LOT 9013 STRS/HFRS 1 SPLIT LOAD**

Price: \$ \_\_\_\_\_ Buyer # \_\_\_\_\_

**Avg. Wt:** 45 Strs: 680 lbs. **Variance:** 200 lbs.  
27 Hfrs: 670 lbs. **Variance:** 200 lbs.

**AllNATURAL** **PrimeVAC**  
BY MERCK ANIMAL HEALTH

**Contractor:** Bruce Shankle 704-694-8686

**Nelson Talley**

Stanfield, NC

15 miles east of I-485 in Charlotte, NC

**715**  
WEIGHT  
STOP

**705**  
WEIGHT  
STOP

<b>Blk/BWF</b>	100%	<b>Frame</b>	
<b>Char-X</b>	-	<b>Medium</b>	80%
<b>Red</b>	-	<b>Small</b>	20%
<b>#1</b>	70%	<b>Flesh</b>	
<b>#1<sup>1/2</sup></b>	30%	<b>Medium</b>	100%



*Heifers sell \$.08 back.*

**Delivery Date:** January 14 - 18

**Shrink:** 2% **Slide:** \$6/CWT topside only

**Conditions:** Cattle will be weighed on the truck at the feed mill on Certified Scales.

**Nutrition:** Silage TMR and haylage with free choice minerals.

**Vaccinations:** Vista Once (1x), ViraShield 6 L5 (1x), Vision 7 (1x)

**Implants:** None

**Dewormer:** LongRange

**COMMENTS** *Home-Raised, All-Natural, Pre-Conditioned, Weaned, BQA Certified.*



Another split load of home-raised, all-natural steers and heifers from Nelson Talley. Cattle are all Angus-sired and Angus-X cows and are 100% black or BWF. They have been double vaccinated and were not implanted. There qualify as all-natural, but not GAP Certified. A good load of 6-weight cattle ready to go right after the sale.

**LOT 9014 STRS/HFRS 1 SPLIT LOAD**

Price: \$ \_\_\_\_\_ Buyer # \_\_\_\_\_

**Avg. Wt:** 35 Strs: 750 lbs. **Variance:** 150 lbs.  
35 Hfrs: 720 lbs. **Variance:** 150 lbs.

**AllNATURAL** **SelectVAC**

**Contractor:** Marcus Harward 704-322-0840

**Fields & Smith Farms**

Liberty, NC

20 miles southeast of Greensboro, NC

**785**  
WEIGHT  
STOP

**755**  
WEIGHT  
STOP

<b>Blk/BWF</b>	98%	<b>Frame</b>	
<b>Char-X</b>	2%	<b>Medium</b>	100%
<b>Red</b>	-	<b>Large</b>	-
<b>#1</b>	95%	<b>Flesh</b>	
<b>#1<sup>1/2</sup></b>	5%	<b>Medium</b>	100%



*Heifers sell \$.06 back.*

**Delivery Date:** January 21 - 25. **Need a 48 hour notice.** **Shrink:** 1% **Slide:** \$5/CWT topside only

**Conditions:** Cattle will be hauled 10-20 miles to Alamance Cattlemen's barn and weighed on ground scales.

**Nutrition:** Silage and 13% pellet feed with access to free choice minerals, pasture, and hay.

**Vaccinations:** Bovi-Shield Gold 5 (2x), One Shot Ultra 7 (2x), Ultrachoice 7 (1x)

**Implants:** None

**Dewormer:** Cydectin (1x), Ivomec (1x), Dectomax (1x)

**COMMENTS** *Home-Raised, All-Natural, Backgrounded, Weaned, BQA Certified.*



A fancy set of home-raised, weaned steers and heifers. The calves are sired by high-performance Angus & SimAngus bulls, predominantly from EBS Farms and Jonathan Massey. Calves are at least 50-75% Angus. They have been double vaccinated and are bunk broke. They have been weaned for 60+ days. A good load of backgrounded steers and heifers from two farmers.

Page -10- *Cattle that are picked up after the stated delivery dates will be subject to a 3# per day increase on the base weight and any weight stops for each day late after the last stated delivery date.*



LOT 9015 STRS/HFRS 1 SPLIT LOAD

Price: \$ \_\_\_\_\_ Buyer # \_\_\_\_\_

Avg. Wt: 35 Strs: 775 lbs. Variance: 150 lbs.  
35 Hfrs: 700 lbs. Variance: 150 lbs.

**AllNATURAL** PrimeVAC<sup>™</sup>  
BY MERCK ANIMAL HEALTH

Contractor: Marcus Harward 704-322-0840

**Willow Springs Farm - Zach Swaim**  
Mocksville, NC  
25 miles northeast of Statesville, NC



<b>Blk/BWF</b>	90%	<b>Frame</b>	
<b>Char-X</b>	2 hd.	<b>Medium</b>	100%
<b>Red</b>	7 hd.	<b>Large</b>	-
<b>#1</b>	100%	<b>Flesh</b>	
<b>#1<sup>1/2</sup></b>	-	<b>Medium</b>	100%



*Heifers sell \$.06 back.*

**Delivery Date:** January 15 - 18

**Shrink:** 2% **Slide:** \$5/CWT topside only

**Conditions:** Cattle will be weighed on the truck on Certified Scales. **Need a 48 hour notice to load.**

**Nutrition:** TMR - 12# of soyhulls, wet corn gluten, and ground corn with mineral, pasture, and hay.

**Vaccinations:** Vista Once (1x), Triangle 10 (1x), Vision 7 w/ somnus (2x)

**Implants:** None

**Dewormer:** Cydectin (2x)

**COMMENTS** *Home-Raised, All-Natural, Backgrounded, Weaned, Heifers Guaranteed Open, BQA Certified*



A very good set of calves that are all home-raised. Cattle are out of Angus-based cows and sired by top-performing, high carcass bulls. Sires are Judd Ranch Gelb/Balancer bulls (JRI Top Gear, JRI Secret Weapon) or Mystic Hill Angus bulls (Right Lead 0820, Extra 1107). They are bunk broke and broke to waters as well as broke to a hot wire fence. They are weaned 60+ days at delivery. A fancy set of home-raised, docile calves. *GAP Certified through Pineland Farms.*



## 2019 Schedule

*All regular sales will be the first Wednesday of the month starting at 9:30 am est. (8:30 am cst.) unless noted with an (\*).*

*Sales are the first Wednesday of the month unless the first Wednesday is the 1st day of the month, then the sale will be the following Wednesday.*

February 6

August 7

March 6

September 4

April 3

October 2

May 8\*

November 6

June 5

December 4

July 10\*

*Cattle that are picked up after the stated delivery dates will be subject to a 3# per day increase on the base weight and any weight stops for each day late after the last stated delivery date.*



# Harward Sisters

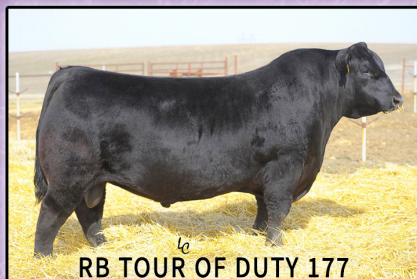
## SELECT BULL & FEMALE SALE

### JANUARY 26, 2019

#### STANLY COUNTY LIVESTOCK MARKET, NORWOOD, NC

Featuring sons and daughters of these AI sires:

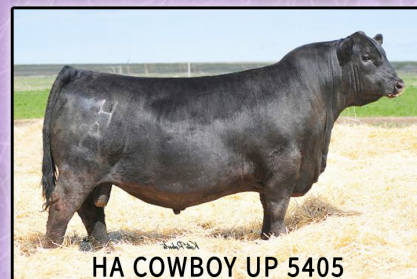
ANGUS, SIMANGUS, CHAROLAIS, RED ANGUS



RB TOUR OF DUTY 177



ICC PAY RAISE 4886



HA COWBOY UP 5405



CONNEALY BLACK  
GRANITE



SILVEIRAS STYLE  
9303



JBS BIG CASINO  
336Y



LT LEDGER  
0332 P



SILVEIRAS MISSION  
NEXUS 1378

## 30 BULLS • 75 FEMALES

15 Angus & SimAngus Open Heifers • 30 Commercial Open Heifers

10 Angus Pairs & Bred Cows • 20 Commercial Bred Heifers

Sale books available online or contact us for a copy!



**HARWARD SISTERS**  
BROOKE, CATHERINE,  
LEANN, MARCIE & MATTIE  
704-322-9770  
[WWW.HARWARDSISTERS.COM](http://WWW.HARWARDSISTERS.COM)

PVF MISSIE 7306  
RESERVE SUPREME CHAMPION  
GRAND CHAMPION ANGUS HEIFER  
2018 NC STATE FAIR