



MID-ATLANTIC CATTLE SALES

*A family owned and operated livestock video auction
with 30+ years of livestock marketing experience.*

SEPTEMBER 2, 2025

TUESDAY AT 1:00 PM EST

WWW.MACSVIDEO.COM



Mid-Atlantic Cattle Sales, LLC
28978 Misenheimer Rd. Richfield, NC 28137
704-322-0840 • 704-322-9770
info@macsvideo.com

DVAuction
Broadcasting Real-Time Auctions

Video Sale INFORMATION

The cattle offered for sale are indicated on the following sale sheets and the online sale description as described to the MACS representatives by the owner. They are described by lot numbers, seller, location of cattle, numbers of head, estimated weight, management practices, delivery date, conditions of sale and delivery, and verified programs. Representatives for each load are listed under each respective lot. Every effort has been made to assure the correctness of this information but all announcements from the auctioneer or official auction staff prior to or during the sale shall take precedence over printed matter herein.

SALE DATE & TIME:

Tuesday - September 2, 2025

1:00 pm est. | 12:00 pm cst.

CONTACT:

Marcus Harward704-322-0840

Brooke Harward704-322-9770

www.MACSvideo.com

View catalog, videos, and additional updates online.

www.vimeo.com/macsvideo

All videos of sale cattle are posted directly on our video page listed above and on DV Auction

***MACS Sale Terms and Conditions are listed in this catalog and online. All loads will sell under these terms and conditions.**

Bidding Options

*We want to offer you the best opportunities we can to participate in our sales each month.
Below are three options for bidding on the sale.*

1. CONFERENCE CALL

After 12:45 eastern on sale day, you can call the auction number to listen and bid on the sale. To bid during the sale, you will use your buyer number to bid on the lot. Contact Marcus or Brooke prior to the sale to receive a buyer's number. *Please keep background noise to a minimum as we will have multiple people on the line. To mute your phone, press *1. To un-mute, press *1 again.*

CALL-IN NUMBER: 1-866-906-9888

PASSCODE: 9461720 #



2. DV AUCTION - INTERNET VIEWING AND BIDDING

To view the sale or bid online, visit www.DVAuction.com. Find the "Mid-Atlantic Cattle Sales (Richfield, NC)" sale and click on "Details." From this page you can view the catalog, videos, or log in to watch the sale. If you have an account, log in and view the sale. If you do not, you must create an account under the "Create New Account" tab in the upper left hand corner of the screen. You will need to confirm this account through your e-mail. *It is best to do this at least a day before the sale.*

You DO NOT have to be approved just to watch the sale but you will still need to create an account with DVAuction. To register for a buyer's number, call Brooke at 704-322-9770 prior to the sale to be approved to bid online.

3. ABSENTEE BIDDING

For people who can not view or bid on the sale at sale time, we have can handle closed bids in house and assist you with absentee bidding. Contact Marcus at 704-322-0840 for more information.

*"And we know that in all things God works for the good of those who love him,
who have been called according to his purpose."*

ROMANS 8:28



LOT SUMMARY

TUESDAY, SEPTEMBER 2, 2025

Video Sale Information	Pg 2
Table of Contents / Lot Summary	Pgs 3-4
Tri-County Cattlemen's Alliance Summary	Pg 5
AngusLink Loads	Pg 6

LOT NUMBER	LOAD NUMBER	TYPE	BASE WT.	PRODUCER	STATE	DELIVERY	PAGE NUMBER
Lot 5305	28 Head	Open Heifers		Rushton Farms * GAP VNB NHTC CARE ANGUS	SC	Sept. 8-12	Pg 7
Lot 5306	1 Load	Steers	630 lbs.	McDonald & Beer Farms *	SC	Sept. 22-24	Pg 8
Lot 5307	0.75 Load	Steers	675 lbs.	Sheek Farms * GAP VNB NHTC	NC	Sept. 8-12	Pg 8
Lot 5308	1 Load	Steers	700 lbs.	Scotton Farms	NC	Sept. 9-11; 16-18	Pg 9
Lot 5309	1 Load	Steers	705 lbs.	Tri-County Cattlemen *	SC	Sept. 17-19	Pg 9
Lot 5310	0.5 Load	Steers	715 lbs.	Sun-Dell *	NC	Sept. 15-19	Pg 10
Lot 5311	1 Load	Steers	750 lbs.	Derek Adams *	SC	Sept. 8-12	Pg 10
Lot 5312	0.9 Load	Steers	775 lbs.	R & W Farms * GAP VNB NHTC	SC	Sept. 8-12	Pg 11
Lot 5313	1 Load	Steers	775 lbs.	Boyd Farms * GAP VNB NHTC	SC	Sept. 22-26	Pg 11
Lot 5314	2 Loads	Steers	780 lbs.	Donald Chriscoe Farm *	NC	Sept. 4-12	Pg 12
Lot 5315	1 Load	Steers	780 lbs.	Cox Land & Cattle *	NC	Sept. 3-8	Pg 12
Lot 5316	1 Load	Steers	805 lbs.	Black Farms * GAP VNB NHTC	SC	Sept. 8-12	Pg 13
Lot 5317	1 Load	50 Strs 14 Hfrs	800 lbs. 740 lbs.	Lassiter Farm * GAP VNB NHTC ANGUS	NC	Sept. 8-12	Pg 13
Lot 5318	1 Load	Steers	825 lbs.	Hannah Cattle Company	NC	October 6-12	Pg 14
Lot 5319	1 Load	Heifers	665 lbs.	Lewis Farms * GAP	SC	Sept. 8-11	Pg 14
Lot 5320	1 Load	Heifers	680 lbs.	Sheek Farms * GAP VNB NHTC	NC	Sept. 8-12	Pg 15
Lot 5321	0.9 Load	Heifers	715 lbs.	R & W Farms * GAP VNB NHTC	SC	Sept. 8-12	Pg 15
Lot 5322	1 Load	Heifers	725 lbs.	Boyd Farms * GAP VNB NHTC	SC	Sept. 22-26	Pg 16
Lot 5323	2 Loads	Heifers	750 lbs.	Donald Chriscoe Farm *	NC	Sept. 4-12	Pg 16
Lot 5324	1 Load	Heifers	760 lbs.	Falling Creek Cattle Co	NC	Sept. 8-12	Pg 17

CONTINUED ON NEXT PAGE

* = Affidavit Natural GAP = GAP Certified VNB = Verified Natural
NHTC = Non-Hormone Treated CARE = BeefCARE Certified ANGUS = AngusVerified Sires


LOT SUMMARY CONT

TUESDAY, SEPTEMBER 2, 2025


LOT NUMBER	LOAD NUMBER	TYPE	BASE WT.	PRODUCER	STATE	DELIVERY	PAGE NUMBER
Lot 5325	1 Load	54 Strs 28 Hfrs	605 lbs. 570 lbs.	Tri-County Cattlemen *	SC	Sept. 17-19	Pg 17
Lot 5326	1 Load	42 Strs 39 Hfrs	625 lbs. 560 lbs.	Lewis Farms * ^{GAP}	SC	Sept. 8-11	Pg 18
Lot 5327	1 Load	50 Strs 32 Hfrs	625 lbs. 600 lbs.	Porter Farms * ^{GAP VNB NHTC ANGUS}	NC	Sept. 8-12	Pg 18
Lot 5328	1 Load	25 Strs 50 Hfrs	630 lbs. 685 lbs.	Derek Adams *	SC	Sept. 8-12	Pg 19
Lot 5329	1 Load	50 Strs 25 Hfrs	700 lbs. 700 lbs.	Calhoun Farms * ^{VNB NHT}	SC	Sept. 15-19	Pg 19
Lot 5330	0.9 Load	29 Strs 28 Hfrs	795 lbs. 700 lbs.	Greg Beer *	SC	Sept. 22-26	Pg 20

September Select Bred Heifer Sale - September 20, 2025	Pg 20
NC Simmental Fall Harvest Sale - September 6, 2025	Pg 21
Upcoming Video Sale Dates	Pg 22
DV Auction Information	Pg 23
MACS Sale Terms & Conditions	Pgs 24-25

* = Affidavit Natural ^{GAP} = GAP Certified ^{VNB} = Verified Natural
^{NHTC} = Non-Hormone Treated ^{CARE} = BeefCARE Certified ^{ANGUS} = AngusVerified Sires



HARWARD BROTHERS LIVESTOCK MARKET
 2207 Turnersburg Hwy. Statesville, NC
 Phone: 704-546-2692
WWW.TURNERSBURGSTOCKYARDNC.COM



STANLY COUNTY LIVESTOCK MARKET
 13215 Indian Mound Rd. Norwood, NC
 Phone: 704-474-7681
WWW.NORWOODSTOCKYARDNC.COM

Weekly Sales - Every Monday at 11:30 am
 Take in livestock on Sunday (12 pm - 7 pm) and Monday
 3:00 pm - Holstein & Dairy Influenced Feeder Cattle
 6:00 pm - Small Animal Sale (Baby Calves, Goats, Sheep)

Marcus Harward • 704-322-0840
 Brooke Harward • 704-322-9770


Weekly Sales - Every Wednesday at 10:30 am
 Take in livestock on Tuesday (10 am - 8 pm) and Wednesday

Graded Feeder Calf Sale Schedule posted online at
www.norwoodfeeder calf.com

Marcus Harward • 704-322-0840
 Catherine Edwards • 704-550-7920
 Will Edwards • 919-449-8064

Watch the sales live every week!

CATCHING, HAULING, AND CATTLE WORK SERVICES AVAILABLE



MAC-VAC FEEDER CALVES
 A marketing program available at both sale locations for vaccinated steers and heifers. Calves that meet vaccination requirements and have the sale tag in their ear will sell in the MAC-VAC portion of the sale at the beginning of the feeder calf sale each week. For more information, please visit www.norwoodfeeder calf.com or contact any of the numbers listed here.

Catching, hauling, and cattle work services:
 For hauling services, contact Marcus at 704-322-0840.
 If you need help working your cattle, contact Marcus Harward at 704-322-0840 or Chuck Doolittle at 704-221-1447 for more information.

TRI-COUNTY CATTLEMENS ASSOCIATION SALE

STEERS: Lots 5306 & 5309

HEIFERS: Lot 5319

SPLIT LOADS: Lots 5325 & 5326

**TRI-COUNTY CATTLEMENS
ASSOCIATION SALE**

**Look for the orange Tri-County box
in the comments of each lot.**



The Tri-County Cattlemen's group has been marketing load lots of feeder calves for over 40 years. This year's selection includes single and two producer loads as well as composite loads. All producers come from the Chester and tri-county area.

These are excellent, reputational cattle that are backed by good management and health programs as well as high-quality genetics. The following is the base information for these loads. Complete information can be found on each lot.

- ♦ All producers are BQA Certified and follow BQA guidelines
- ♦ All lots are completely preconditioned for at least 45 days
- ♦ Same Health Program (Merck program). Shots are given no less than 2 weeks and no more than 60 days before the sale.
 - ♦ Sired by quality Angus, Simmental, SimAngus, Gelbvieh, or Balancer bulls.

2025 TRI-COUNTY PRODUCERS

Beer Farms - Allen Beer
Circle K Farm - Paul Kicidis
Gustavo Cruz
Juan Cruz
Lewis Farms

McDonald Farms - Keith McDonald
McGill Brothers
West Stevenson
Rusty Thomson
J. Westbrook

**For more information on the cattle or the Tri-County Program,
contact Brian Beer (area livestock agent) at 803-320-9360.**

MAKE YOUR CATTLE STAND OUT



ANGUSLINK
**GENETIC
MERIT
SCORECARD™**

The **Genetic Merit Scorecard (GMS)** draws on the industry's largest database to evaluate calf genetics. It projects their performance potential from weaning to the packing plant, using the breeding history of a herd. Scores indicate how cattle will perform in the feedlot and on the rail, with top Grid scores earning the Certified Angus Beef® brand Targeting the Brand™ logo.



WHAT DO THE SCORES MEAN?

With the industry average being 100, the higher the score, the greater the genetic potential of the calves.

BEEF SCORE: Predicts genetic potential for feedlot performance and carcass value.

FEEDLOT SCORE: Signifies a group's potential for post-weaning performance.

GRID SCORE: Signals the performance potential for carcass grid merit.

MATERNAL SCORE: Demonstrates an enrollment group's genetic potential for use as replacement heifers.

**ANGUS
VERIFIED™**

AngusVerified is a USDA Process-Verified Program (PVP) that documents and verifies, at minimum, the **enrolled calves are 50% Angus**. In other words, enrolled calves must have been sired by a registered and properly transferred Angus bull, used naturally or by artificial insemination.

**September 2, 2025
MACS Loads**

**Lot 5305 - Rushton Farms
Lot 5317 - Lassiter Farm
Lot 5327 - Porter Farms**

ANGUSLINK™
VALUE ADDED PROGRAMS

ANGUSLINK.COM | 816-383-5100

Lot 5305 0.5 Load of HEIFERS

Price: \$ _____ Buyer # _____

Rushton Farms (Bruce Rushton)

Saluda, SC - 45 miles west of Columbia, SC

Home-Raised, GAP-4, CARE, Verified Natural, NHTC, Backgrounded, Weaned

Estimated Weight: 730 lbs.

Pickup Date: September 8-12 **Estimated Head Count** 28

Slide/Shrink: Heifers will be sold by the head only

Weigh: Heifers will be sold by the head only

Notice to load: 48-72 hours **Weaned:** 90+ days

Colors: 100% blk/bwf

Muscling: 100% #1

Nutrition: Bunk fed 7# ph/pd of 14% CPC feed with free choice Multi-Kare mineral, pasture, and hay.

Vaccinations: Vista Once (2x), Vision 7 somnus (2x)

Dewormer: Safeguard, Eprinex

Implants: None

Genetics: ANGUS VERIFIED SIRES - 75% Angus. Sired by Yon Angus bulls out of high % Angus cows. Sires average rank in the top 25% for Marbling, Ribeye, and \$Beef and over half are CAB Targeting the Brand. Genetic Merit Beef Score of 142.

Programs: GAP-4; Beef CARE; IMI Verified Natural; NHTC; Source and Age; Seller Affidavit

Heifers: Open, not palpated.

Comments: A fancy group of open heifers that will make an excellent set of replacement females. These heifers from Bruce Rushton are about as fancy as they come to make a nice set of replacement females for you. Rushton Farms has used high-performing Yon Family Farms Angus sires for many years and have high percentage Angus cows. These heifers have very good maternal, growth, and carcass genetics to make an excellent set of heifers to breed this fall. These heifers were all born last fall with complete records on them.

If you decide you do not want to breed them, they will also make an excellent group of feeding heifers as their sires rank in the top 25% for important carcass traits and have a genetic merit high genetic merit scores for Beef, Feedlot, and Grid with AngusLink. They are also EID tagged for verified natural, NHTC, and AngusVerified sires and are GAP certified with the GAP-4 certificate transferring at no cost to buyer (GAP#23403, Exp 11/2/25). Calves are also BeefCARE certified, broke to bunks, and broke to waters.

We are selling these heifers by the head, but they should average around 730 lbs according to their weights taken on 8/31/25.

MACS Rep: Austin Landreth, 864-484-7153

Programs:



GENETIC MERIT SCORECARD	
GENETIC MERIT	142
FEEDLOT SCORE	138
GRID SCORE	133



Cattle that are picked up after the stated delivery dates will be subject to a 2# per day increase on the base weight and any weight stops for each day late after the last stated delivery date.

Lot 5306 1 Load of STEERS

Price: \$ _____ Buyer # _____

McDonald Farms & Beer Farms

Blackstock, SC - 50 miles south of Charlotte, NC

Home-Raised, Affidavit Natural, Backgrounded, Weaned, BQA Certified**Base Wt: 630 lbs. Wt Stop: 665 lbs. (35#) Variance: 230 lbs.****Pickup Date:** September 22-24 **Estimated Head Count** 79**Slide/Shrink:** 2% shrink and slide \$14/cwt topside only**Weigh:** Hauled 12 miles, weighed on certified truck scales (I-77, exit 48, Pilot)**Notice to load:** 48 hours**Weaned:** 55+ days**Colors:** 99% blk/bwf, 1 hd gray**Flesh:** 90% Medium, 10% Med+**Muscling:** 95% #1, 5% #1.5**Frame:** 85% Medium, 15% Large**Nutrition:** Bunk fed 10-12# ph/pd of commodity blend with pasture, mineral, and hay.**Vaccinations:** Vista Once (1x), Vista 5 (2x), Vision 7 (2x), Vision 7 somnus (1x)**Dewormer:** Safeguard (1x), Ivermectin (1x)**Implants:** None**Genetics:** 50% or more Angus. Sired by Angus, SimAngus, and Simmental bulls out of Angus and SimAngus cows.**Programs:** Seller Affidavit; BQA Certified**Comments:** Broke to bunks and waters. A fancy set of reputational calves that were all born last fall. Calves were vaccinated in April and then again in mid-July and late August with the Merck PrimeVAC program. There are 58 hd from McDonald and 19 hd from Allen Beer (Beer Farms) that will be brought together the morning of load out to make one full load. All calves have been managed under the same program and are all-natural with both producers signing natural affidavits. A very good set of reputational calves from two good programs.**MACS Rep:** Marcus Harward, 704-322-0840. Tri-County Coordinator, Brian Beer, 803-320-9360**Programs:***Natural*
AFFIDAVIT**PrimeVAC**
BY MERCK ANIMAL HEALTH**TRI-COUNTY CATTLEMENS**
ASSOCIATION SALE**Lot 5307 0.75 Load of STEERS**

Price: \$ _____ Buyer # _____

Sheek Farms (Harold Sheek)

Advance, NC - 15 miles southwest of Winston-Salem, NC

Home-Raised, GAP-4, Verified Natural, Backgrounded, Weaned, BQA Certified**Base Wt: 675 lbs. Wt Stop: 710 lbs. (35#) Variance: 150 lbs.****Pickup Date:** September 8-12 **Estimated Head Count** 52**Slide/Shrink:** No shrink and slide \$14/cwt topside only**Weigh:** Hauled 30 miles to HBLM, Turnersburg; weighed on certified ground scales**Notice to load:** 48-72 hours**Weaned:** 60+ days**Colors:** 100% blk/bwf**Flesh:** Medium**Muscling:** 95% #1, 5% #1.5**Frame:** Medium**Nutrition:** Bunk fed 3-5# of commodity pellets with free choice mineral, pasture, and hay.**Vaccinations:** Vista Once (1x), Vista 5 L5 (1x), Vision 7 somnus (1x), Vision 7 20/20 (1x)**Dewormer:** Eprinex (1x), Safeguard (1x)**Implants:** None**Genetics:** 75% or more Angus genetics - sired by Angus bulls out of high % Angus cows. 25% or less Simmental influence.**Programs:** GAP-4; BeefTraxx Verified Natural; NHTC; Seller Affidavit**Comments:** Broke to bunks and waters. A very fancy set of docile, reputational steers that are all home-raised, born last fall, and weaned for 60+ days. Sired by Angus bulls - 1/4 Simmental or less in the calves. GAP-4 certification can transfer at no cost to buyer (GAP#23579; Exp 11/16/25) and EID tagged for Verified Natural and NHTC. *A partial load at a little over 35,000 lbs.***MACS Rep:** Jimmy Dagenhart, 704-425-3587**Programs:***Natural*
AFFIDAVIT**global animal**
PARTNERSHIP**BEEF**
TRAXX**NHTC**
CERTIFIED**USDA**
APR & SOURCE
VERIFIED**PrimeVAC**
BY MERCK ANIMAL HEALTH

Lot 5308 1 Load of STEERS

Price: \$ _____ Buyer # _____

Scotton Farms

Staley, NC - 20 miles southeast of Greensboro, NC

Backgrounded, Weaned



Base Wt: 700 lbs. Wt Stop: 725 lbs. (25#) Variance: 150 lbs.

Pickup Date: September 9-11, 16-18 **Estimated Head Count** 69

Slide/Shrink: No shrink and slide \$14/cwt topside only

Weigh: Hauled 15-25 miles to sorting barn, unloaded, weighed on MACS certified ground scales

Notice to load: 48 hours **Weaned:** 200+ days

Colors: 93 head to sort - 80 hd blk/bwf, 5 hd ch-x, 7 hd red/rwf

Muscling: 90% #1, 10% #1.5

Nutrition: Bunk fed 3-4# daily of ground corn and cotton seed. Running on pasture since January. Free choice hay and mineral.

Vaccinations: Bovi-Shield Gold One Shot (1x), Vision 7 20/20 (1x)

Dewormer: Ivermectin (3x), Safeguard (2x) **Implants:** Ralgro (1x)

Genetics: Commercial Angus-based and crossbred.

Programs: No

Comments: Broke to bunks and waters. Purchased from local sale barns, vaccinated, and turned out on grass late last fall. Have primarily been on grass and hand fed daily, carrying just a medium/light flesh. A good set of steers to go to grass or feed. 90 head to sort a load out of.

MACS Rep: Marcus Harward, 704-322-0840

Programs:



Flesh: Medium-Minus

Frame: Medium

Lot 5309 1 Load of STEERS

Price: \$ _____ Buyer # _____

Tri-County Cattlemen

Sharon, SC - 40 miles southwest of Charlotte, NC

Home-Raised, Affidavit Natural, Backgrounded, Weaned, BQA Certified



Base Wt: 705 lbs. Wt Stop: 740 lbs. (35#) Variance: 165 lbs.

Pickup Date: September 17-19 **Estimated Head Count** 70

Slide/Shrink: 2% shrink and slide \$12/cwt topside only

Weigh: Hauled 15-40 miles to central location, weighed on certified ground scales. Very good weigh up.

Notice to load: 48-72 hours **Weaned:** 45-55+ days

Colors: 97% blk/bwf, 1 hd ch-x, 1 hd red

Muscling: 90% #1, 10% #1.5

Nutrition: Bunk fed 10-12# ph/pd of commodity blend with free choice mineral, pasture, and hay.

Vaccinations: Vista Once (1x), Vista 5 (1x), Vision 7 (2x)

Dewormer: Safeguard or Ivermectin (2x), Pour-On (1x) **Implants:** None

Genetics: 50% or more Angus. Sired by Angus, SimAngus, or Simmental bulls out of Angus, Sim-X, and Charolais-X cows.

Programs: Seller Affidavit

Comments: Broke to bunks and waters. A reputational set of calves that were all born last fall using similar genetics and nutrition. All calves were vaccinated mid-July and mid-August with the Merck PrimeVAC program. This load has just 4 producers coming together to make a good load- J Kingsmore (12 hd), R Thomson (20 hd), McGill Bros (21 hd), Circle K (17 hd). *Cannot load the same day as Tri-County Split Load

MACS Rep: Marcus Harward, 704-322-0840. Tri-County Coordinator, Brian Beer, 803-320-9360

Programs:



TRI-COUNTY CATTLEMENS ASSOCIATION SALE

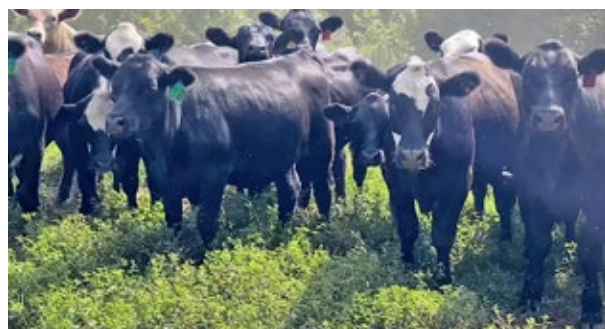
Lot 5310 0.5 Load of STEERS

Price: \$ _____ Buyer # _____

Sun-Dell

Wendell, NC - 15 miles east of Raleigh, NC

Home-Raised, Affidavit Natural, Backgrounded, Weaned



Base Wt: 715 lbs. Wt Stop: 750 lbs. (35#) Variance: 175 lbs.

Pickup Date: September 15-19 **Estimated Head Count** 33

Slide/Shrink: 2% shrink and slide \$12/cwt topside only

Weigh: Hauled 5 miles, weighed on certified truck scales

Notice to load: 48 hours **Weaned:** 100+ days

Colors: 31 hd blk/bwf, 1 hd smoke, 1 hd rwf

Muscling: 90% #1, 10% #1.5

Nutrition: Fed oats and oat hay in feeders with free choice pasture and mineral.

Vaccinations: Vista Once (1x), Vista 5 (1x), Vision 7 somnus (1x), Vision 7 (1x)

Dewormer: Cydectin, Prohibit **Implants:** None

Genetics: 65% or more Angus. Sired by Angus bulls out of Angus-based cows.

Programs: Seller Affidavit

Comments: Broke to waters. A fancy set of home-raised, Angus sired steers that are predominantly black and black baldies. They have been double vaccinated and weaned since the first of June. Seller will sign natural affidavits. **A partial load of 33 head at about 24,000 lbs.**

MACS Rep: Catherine Edwards, 704-550-7920

Programs:

Natural
AFFIDAVIT

PrimeVAC
BY MERCK ANIMAL HEALTH



Flesh: Medium

Frame: Medium

Lot 5311 1 Load of STEERS

Price: \$ _____ Buyer # _____

Derek Adams

Mt Carmel, SC - 45 miles northwest of Augusta, GA

Home-Raised, Affidavit Natural, Backgrounded, Weaned



Base Wt: 750 lbs. Wt Stop: 775 lbs. (25#) Variance: 175 lbs.

Pickup Date: September 8-12 **Estimated Head Count** 65

Slide/Shrink: 2% shrink and slide \$12/cwt topside only

Weigh: Certified MACS ground scales at farm

Notice to load: 48 hours **Weaned:** 70+ days

Colors: 58 hd blk/bwf, 2 hd ch-x, 5 hd red/rwf, 2 black skunk tail

Muscling: 95% #1, 5% #1.5

Nutrition: Bunk fed 8-10# ph/pd of Oglethorpe Grower feed with free choice MultiKare mineral, pasture, and hay.

Vaccinations: Vista Once SQ (1x), Pyramid 5 (1x), Covexin 8 (1x), Vision 7 w/spur (1x)

Dewormer: Cydectin (1x) **Implants:** None

Genetics: 50-75% Angus. Sired by Angus and Red Angus bulls out of Angus-X and Char-X cows.

Programs: Seller Affidavit

Comments: Broke to bunks and waters. Calves were born last fall, double vacc'd, weaned 70+ days, and are docile. A very nice set of backgrounded, weaned calves ready to go to feed. Seller will sign all-natural affidavits as needed.

MACS Rep: Austin Landreth, 864-484-7153

Programs:

Natural
AFFIDAVIT

Boehringer Ingelheim



Flesh: Medium

Frame: Medium

Lot 5312 0.9 Load of STEERS

Price: \$ _____ Buyer # _____

Richardson Williams Partnership (Richardson)

Brittons Neck, SC - 40 miles east of Florence, SC

Home-Raised, GAP-4, Verified Natural, Backgrounded, Weaned



Base Wt: 775 lbs. Wt Stop: 805 lbs. (30#) Variance: 175 lbs.

Pickup Date: September 8-12 **Estimated Head Count** 52

Slide/Shrink: 2% shrink and slide \$12/cwt topside only

Weigh: Certified MACS ground scales at farm

Notice to load: 48 hours **Weaned:** 60+ days

Colors: 100% blk/bwf

Flesh: Medium

Muscling: 95% #1, 5% #1.5

Frame: Medium

Nutrition: Bunk fed 12# ph/pd of 14% commodity blend with free choice pasture, hay, and Purina high-mag mineral

Vaccinations: Bovi-Shield Gold One Shot (1x), Bovi-Shield Gold 5 (1x), Ultrabac 7 (2x), MultiMin 90 (1x)

Dewormer: Eprinex Pour On, Valbazen Drench, Ivomec (2x) **Implants:** None

Genetics: 50% or more Angus. Sired by high-performing SimAngus and Angus bulls from Yon and Baxley and out of Angus and SimAngus dams.

Programs: GAP-4; IMI Verified Natural; NHTC; Source & Age; Seller Affidavit

Comments: Broke to bunks and waters. A fancy set of natural backgrounded steers all coming off the Bruce Richardson Farm. Calves were born last fall, double vaccinated, and weaned for 60+ days. They are all blk/bwf with Angus and Simmental influence in the calves. Reputational calves that are GAP-4 and can be EID tagged for Verified Natural with IMI. GAP certificate can transfer at no cost to buyer (GAP#, Exp 12/20/25). **Will be 57 head for the load at about 44,000 lbs.**

MACS Rep: Marcus Harward, 704-322-0840

Programs:



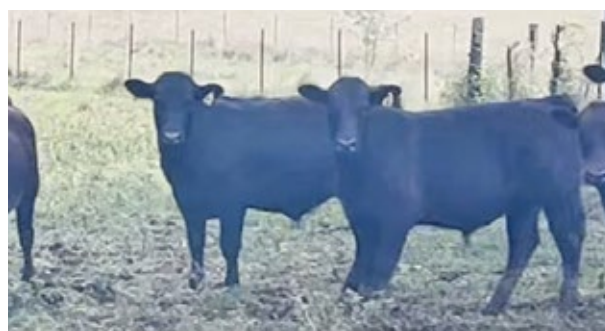
Lot 5313 1 Load of STEERS

Price: \$ _____ Buyer # _____

Boyd Farms (Steve Boyd)

Chester, SC - 45 miles southwest of Charlotte, NC

Home-Raised, GAP-4, Verified Natural, Backgrounded, Weaned



Base Wt: 775 lbs. Wt Stop: 805 lbs. (30#) Variance: 150 lbs.

Pickup Date: September 22-26 **Estimated Head Count** 63

Slide/Shrink: 2% shrink and slide \$10/cwt topside only

Weigh: Certified MACS ground scales at farm

Notice to load: 48 hours **Weaned:** 75+ days

Colors: 100% blk/bwf

Flesh: Medium

Muscling: 90% #1, 10% #1.5

Frame: Medium

Nutrition: Bunk fed 8-10# ph/pd of 14% J&D feed with free choice Vigortone mineral, pasture, and wheat hay.

Vaccinations: Bar Somnus 2P pasteurella (2x), Triangle 10 (2x), Vision 7 20/20 (2x)

Dewormer: Safeguard, Ivomec (2x) **Implants:** None

Genetics: 50% or more Angus. Sired by Angus and SimAngus bulls (Yon and Clemson) out of Angus-X cows.

Programs: GAP-4; Beef Traxx Verified Natural; NHTC; Source & Age; Seller Affidavit

Comments: Broke to bunks and waters. A very good load of Angus-based, natural steers that were all born last fall. Cattle can be EID tagged for verified natural & NHTC. Cattle will be GAP Level 4 certified and certificate will transfer at no cost to buyer (GAP audit pending). A fancy set of steers ready to go the end of September.

MACS Rep: Chuck Doolittle, 704-221-1447

Programs:



Lot 5314 2 Loads of STEERS

Price: \$ _____ Buyer # _____

Donald Chriscoe Farm

Asheboro, NC - 40 miles south of Greensboro, NC

Affidavit Natural, Backgrounded, Weaned



Base Wt: 780 lbs. Wt Stop: 805 lbs. (25#) Variance: 150 lbs.

Pickup Date: September 4-12 **Estimated Head Count** 124

Slide/Shrink: 2% shrink and slide \$12/cwt topside only

Weigh: Certified ground scales at farm

Notice to load: 48 hours **Weaned:** 120+ days

Colors: 87% (108 hd) blk/bwf, 12 hd ch-x, 4 hd red

Flesh: Medium

Muscling: 95% #1, 5% #1.5

Frame: Medium

Nutrition: Bunk fed haylage and TMR (wet corn gluten, cotton) with access to mineral and hay.

Vaccinations: Vista 5 (2x), Nuplura (1x), Vision 7 20/20 (1x), Ocuguard Pinkeye (1x)

Dewormer: Ivomec Inject. (2x)

Implants: None

Genetics: Commercial Angus-based. Mainly sired by Angus and SimAngus bulls.

Programs: Seller Affidavit

Comments: Broke to bunks and waters. Reputational calves purchased from local producers and backgrounded at Chriscoe's for 120+ days. Owner affidavit natural - signed natural affidavits from original producers that will transfer with the cattle.

MACS Rep: Marcus Harward, 704-322-0840

Programs:

Natural
AFFIDAVIT

Elanco

MERCK
Animal Health



Lot 5315 1 Load of STEERS

Price: \$ _____ Buyer # _____

Cox Land & Cattle (Will Cox)

Coleridge, NC - 15 miles southeast of Asheboro, NC



Home-Raised & Purchased, Affidavit Natural, Backgrounded, Weaned

Base Wt: 780 lbs. Wt Stop: 805 lbs. (25#) Variance: 150 lbs.

Pickup Date: September 3-8 **Estimated Head Count** 62

Slide/Shrink: 2% shrink and slide \$10/cwt topside only

Weigh: Certified MACS ground scales at farm

Notice to load: 48 hours **Weaned:** 120+ days

Colors: 95% (62 hd) blk/bwf, 2 hd ch-x, 1 hd rwf

Flesh: Medium

Muscling: 95% #1, 5% #1.5

Frame: Medium

Nutrition: Bunk fed a TMR of corn silage, small grain silage, wet corn gluten, chopped hay, with a balancer mineral pack.

Vaccinations: Vista Once (1x), Vista 5 (1x), NasalGen 3 PMH (1x), Vision 7 somnus (1x), Vision 7 20/20 (1x), Endovac Beef (2x)

Dewormer: Safeguard (1x), Pour-On (2x)

Implants: None

Genetics: 65%+ Angus. Sired by Angus bulls out of Angus-X cows.

Programs: Seller Affidavit

Comments: Broke to bunks and waters. A good load of northern-type feeding steers that are weaned 120+ days and all-natural. Buyer will sign all-natural affidavits as needed. About 80% of these are home-raised and the rest were locally purchased to make a full load. All have been running together since weaning. There are 65 head for the load to make about 51,000 lbs.

MACS Rep: Marcus Harward, 704-322-0840

Programs:

Natural
AFFIDAVIT

PrimeVAC
BY MERCK ANIMAL HEALTH

ENDOVAC-Beef
with Immune Plus



Lot 5316 1 Load of STEERS

Price: \$ _____ Buyer # _____

Black Farms (Wayne & Henry Black)

Prosperity, SC - 40 miles west of Columbia, SC

Home-Raised, GAP-4, Verified Natural, Backgrounded, Weaned, BQA Cert.

**Base Wt: 805 lbs. Wt Stop: 840 lbs. (35#) Variance: 150 lbs.****Pickup Date:** September 8-12 **Estimated Head Count** 60**Slide/Shrink:** 2% shrink and slide \$10/cwt topside only**Weigh:** Certified MACS ground scales at farm**Notice to load:** 48 hours **Weaned:** 75+ days**Colors:** 58 hd blk/bwf, 2 hd ch-x**Flesh:** Medium**Muscling:** 95% #1, 5% #1.5**Frame:** Medium**Nutrition:** Bunk fed 8-10# ph/pd of 13% CPC grower feed with free choice Purina Wind & Rain mineral, pasture, and hay**Vaccinations:** Vista Once (1x), Vista 5 (1x), Vision 7 somnus (2x)**Dewormer:** Eprinex (2x)**Implants:** None**Genetics:** 50-75% Angus. Sired by Angus bulls from Yon & Clemson and out of Angus, Char-X, & Sim-X cows.**Programs:** GAP-4; BeefTraxx Verified Natural; NHTC; Source & Age; Seller Affidavit**Comments:** Broke to bunks and waters. A very fancy set of reputational calves, all born last fall and qualify as all-natural. EID tagged for verified natural. Calves are certified for GAP-4; GAP certificate owned by Pineland Farms and can transfer at buyer's expense (GAP#24603, Exp 4/19/26). **Member of Saluda County Cattlemen's Assoc.** A very good load of big steers ready for feed.**MACS Rep:** Austin Landreth, 864-484-7153**Programs:****Lot 5317 1 Load of STRS/HFRS**

Price: \$ _____ Buyer # _____

Lassiter Farm (David Lassiter)

Liberty, NC - 20 miles southeast of Greensboro, NC

Home-Raised, GAP-4, Verified Natural, Backgrounded, Weaned

~50 Steers Wt: 800 lbs. Wt. Stop: 825 lbs. Variance: 175 lbs.**~14 Hfrs Wt: 740 lbs. Wt. Stop: 765 lbs. Variance: 125 lbs.****Heifers sell \$12/cwt back****Pickup Date:** September 8-12**Slide/Shrink:** 2% shrink and slide \$10/cwt topside only**Weigh:** Certified MACS ground scales at farm**Notice:** 48-72 hours **Weaned:** 100+ days**Colors:** 100% blk/bwf**Flesh:** Medium**Muscling:** 100% #1**Frame:** Medium**Nutrition:** Bunk fed 15# TMR with haylage, DDGs, corn gluten with free choice Vigortone mineral and crabgrass pasture.**Vaccinations:** Bovi-Shield Gold One Shot (1x), Bovi-Shield Gold 5 (1x), Inforce 3 (1x), Cavalry 9 (2x), Somubac (1x), Pinkeye vac (1x)**Dewormer:** Safeguard (2x), Cydectin Pour-On (1x)**Implants:** None**Genetics:** ANGUS VERIFIED SIRES - 75% Angus, 25% Simmental. Sired by high-performing Angus bulls from Uwharrie Ridge, Smith Angus, and Windy Hill Farms and out of high % Angus cows with some Simmental influence. Genetic Merit Beef Score of 123 and Feedlot 128.**Programs:** GAP-4; IMI Verified Natural; NHTC; Source & Age; Seller Affidavit**Preg-checked:** Open, not palpated.**Comments:** Broke to bunks, waters, and a hot wire fence. A very fancy set of steers and heifers coming from a well-managed program, all born last fall. There are 95 head to sort this load from. Cattle are fed daily in bunks and have been grazing summer pasture. Will be EID tagged for verified natural, NHTC, and Angus Verified if needed. GAP-4 certificate can transfer at no cost to buyer. (GAP audit on 9/3/25). This load will be about 40,000 lbs of steers finished with heifers.**MACS Rep:** Marcus Harward, 704-322-0840**Programs:**

Lot 5318 1 Load of STEERS

Price: \$ _____ Buyer # _____

Hannah Cattle Company (Matt Hannah)

Mocksville, NC - 25 miles northeast of Statesville, NC

Backgrounded, Weaned, BQA Certified



Base Wt: 825 lbs. Wt Stop: 865 lbs. (40#) Variance: 200 lbs.

Pickup Date: October 6-10 **Estimated Head Count** 59

Slide/Shrink: 2% shrink and slide \$14/cwt topside only

Weigh: Hauled 10 miles, weighed on certified truck scales

Notice to load: 48 hours **Weaned:** 75+ days

Colors: 65% (39 hd) blk/bwf, 5 hd red/rwf, 16 hd ch-x

Flesh: Medium

Muscling: 90% #1, 10% #1.5

Frame: Medium

Nutrition: Bunk fed 10# CPC compmidoity pellets with free choice mineral, pasture, and hay.

Vaccinations: Vista Once (1x), Vista 5 (1x), Nasalgen 3 (1x), Cavalry 9 (2x)

Dewormer: Safeguard (1x), Cydectin (1x)

Implants: Revalor (1x)

Genetics: Commercial Angus-based.

Programs: No

Comments: Broke to bunks and waters. Put together from local producers, triple vaccinated, and backgrounded on pasture being fed commodity pellets as well. The biggest and smallest steers in the video will be sorted out before delivery. A very good set of reputational steers ready to go to feed.

MACS Rep: Jimmy Dagenhart, 704-425-3587

Programs:



Lot 5319 1 Load of HEIFERS

Price: \$ _____ Buyer # _____

Lewis Farms (John Lewis)

Chester, SC - 45 miles southwest of Charlotte, NC

Home-Raised, GAP-4, Affidavit Natural, Backgrounded, Weaned, BQA Certified



Base Wt: 665 lbs. Wt Stop: 700 lbs. (35#) Variance: 140 lbs.

Pickup Date: September 8-11 **Estimated Head Count** 73

Slide/Shrink: 2% shrink and slide \$10/cwt topside only

Weigh: Certified ground scales at farm. Some hauled in 15 miles and weighed, will have a good weigh up.

Notice to load: 48 hours **Weaned:** 50+ days

Colors: 92% blk/bwf, 6 hd ch-x/smokes

Flesh: Medium

Muscling: 95% #1, 5% #1.5

Frame: 90% Med, 10% Large

Nutrition: Bunk fed 10-12# ph/pd of CPC 13% grower & Performance High Energy Plus 14 with pasture, mineral, and hay.

Vaccinations: Vista Once (1x), Vista 5 (1x), Nasalgen (1x), Vision 7 (1x), Vision 7 somnus (2x)

Dewormer: Safeguard (1x), ProMectin B (1x)

Implants: None

Genetics: 50% or more Angus. Sired by Angus, SimAngus, and Simmental bulls out of Angus, Sim-X, and Charolais-X cows.

Programs: GAP-4; Seller Affidavit

Heifers: Open, not palpated.

Comments: Broke to bunks and waters. A very good set of reputational calves, all born last fall. They are triple vaccinated - vaccinated once on the cow in March and double vaccinated after weaning (vaccinated late July and mid-August). Calves are coming from 2-3 different weaning locations and sorted into loads the week of load out. The GAP Level 4 certificate transfers at no cost to the buyer. (GAP#23233, Exp 10/15/25) and also willing to sign natural affidavits. A very good set of reputational heifers that should feed and finish as a big set of feeders. *Cannot load the same day as Lewis split load

MACS Rep: Marcus Harward, 704-322-0840. Tri-County Coordinator, Brian Beer, 803-320-9360

Programs:



Lot 5320 1 Load of HEIFERS

Price: \$ _____ Buyer # _____

Sheek Farms (Harold Sheek)

Advance, NC - 15 miles southwest of Winston-Salem, NC

Home-Raised, GAP-4, Verified Natural, Backgrounded, Weaned, BQA Certified

Base Wt: 680 lbs. Wt Stop: 715 lbs. (35#) Variance: 150 lbs.

Pickup Date: September 8-12 **Estimated Head Count** 71

Slide/Shrink: No shrink and slide \$14/cwt topside only

Weigh: Hauled 30 miles to HBLM, Turnersburg; weighed on certified ground scales

Notice to load: 48-72 hours **Weaned:** 60+ days

Colors: 100% blk/bwf

Muscling: 95% #1, 5% #1.5

Nutrition: Bunk fed 3-5# of commodity pellets with free choice mineral, pasture, and hay.

Vaccinations: Vista Once (1x), Vista 5 L5 (1x), Vision 7 somnus (1x), Vision 7 20/20 (1x)

Dewormer: Eprinex (1x), Safeguard (1x) **Implants:** None

Genetics: 75% or more Angus genetics - sired by Angus bulls out of high % Angus cows. 25% or less Simmental influence.

Programs: GAP-4; BeefTraxx Verified Natural; NHTC; Seller Affidavit

Heifers: Open, not palpated.

Comments: Broke to bunks and waters. A very fancy set of docile, reputational heifers that are all home-raised, born last fall, and weaned for 60+ days. Sired by Angus bulls - 1/4 Simmental or less in the calves. GAP-4 certification can transfer at no cost to buyer (GAP#23579; Exp 11/16/25) and EID tagged for Verified Natural and NHTC. There are 71-76 head that can go to make a larger load if the buyer wants.

MACS Rep: Jimmy Dagenhart, 704-425-3587

Programs:

Natural
AFFIDAVIT

global animal
PARTNERSHIP

BEEF
TRAXX

NHTC
CERTIFIED

USDA
AGE & SOURCE
VERIFIED

PrimeVAC
BY MERCK ANIMAL HEALTH

Quality That Counts



Flesh: Medium

Frame: Medium

Lot 5321 0.9 Load of HEIFERS

Price: \$ _____ Buyer # _____

Richardson Williams Partnership (Richardson)

Brittons Neck, SC - 40 miles east of Florence, SC

Home-Raised, GAP-4, Verified Natural, Backgrounded, Weaned

Base Wt: 715 lbs. Wt Stop: 745 lbs. (30#) Variance: 175 lbs.

Pickup Date: September 8-12 **Estimated Head Count** 60

Slide/Shrink: 2% shrink and slide \$12/cwt topside only

Weigh: Certified MACS ground scales at farm

Notice to load: 48 hours **Weaned:** 60+ days

Colors: 100% blk/bwf

Muscling: 95% #1, 5% #1.5

Nutrition: Bunk fed 12# ph/pd of 14% commodity blend with free choice pasture, hay, and Purina high-mag mineral

Vaccinations: Bovi-Shield Gold One Shot (1x), Bovi-Shield Gold 5 (1x), Ultrabac 7 (2x), MultiMin 90 (1x)

Dewormer: Eprinex Pour On, Valbazen Drench, Ivomec (2x) **Implants:** None

Genetics: 50% or more Angus. Sired by high-performing SimAngus and Angus bulls from Yon and Baxley and out of Angus and SimAngus dams.

Programs: GAP-4; IMI Verified Natural; NHTC; Source & Age; Seller Affidavit

Heifers: Open, not palpated.

Comments: Broke to bunks and waters. A fancy set of natural backgrounded heifers all coming off the Bruce Richardson Farm. Calves were born last fall, double vaccinated, and weaned for 60+ days. They are all blk/bwf with Angus and Simmental influence in the calves. Reputational calves that are GAP-4 and can be EID tagged for Verified Natural with IMI. GAP certificate can transfer at no cost to buyer (GAP#, Exp 12/20/25). **Will be 60 head for the load at about 43,000 lbs.**

MACS Rep: Marcus Harward, 704-322-0840

Programs:

Natural
AFFIDAVIT

global animal
PARTNERSHIP

imi

VERIFIED

NHTC
CERTIFIED

SelectVAC

YON
FAMILY FARMS

BAXLEY

Quality That Counts



Flesh: Medium

Frame: Medium

Lot 5322 1 Load of HEIFERS

Price: \$ _____ Buyer # _____

Boyd Farms (Steve Boyd)

Chester, SC - 45 miles southwest of Charlotte, NC

Home-Raised, GAP-4, Verified Natural, Backgrounded, Weaned



Base Wt: 725 lbs. Wt Stop: 755 lbs. (30#) Variance: 150 lbs.

Pickup Date: September 22-26 **Estimated Head Count** 68

Slide/Shrink: 2% shrink and slide \$10/cwt topside only

Weigh: Certified MACS ground scales at farm

Notice to load: 48 hours **Weaned:** 75+ days

Colors: 100% blk/bwf

Flesh: Medium

Muscling: 90% #1, 10% #1.5

Frame: Medium

Nutrition: Bunk fed 8-10# ph/pd of 14% J&D feed with free choice Vigortone mineral, pasture, and wheat hay.

Vaccinations: Bar Somnus 2P pasteurella (2x), Triangle 10 (2x), Vision 7 20/20 (2x)

Dewormer: Safeguard, Ivomec (2x)

Implants: None

Genetics: 50% or more Angus. Sired by Angus and SimAngus bulls (Yon and Clemson) out of Angus-X cows.

Programs: GAP-4; Beef Traxx Verified Natural; NHTC; Source & Age; Seller Affidavit

Heifers: Open, not palpated.

Comments: Broke to bunks and waters. A very good load of Angus-based, natural heifers that were all born last fall. Cattle can be EID tagged for verified natural & NHTC. Cattle will be GAP Level 4 certified and certificate will transfer at no cost to buyer (GAP audit pending). A fancy set of heifers ready to go the end of September.

MACS Rep: Chuck Doolittle, 704-221-1447

Programs:

Natural
AFFIDAVIT

global animal
PARTNERSHIP

BEEF
TRAXX

NHTC
CERTIFIED

USDA
AGE & SOURCE
VERIFIED

Boehringer
Ingelheim

YON
FAMILY FARMS

CLEMSON
EXTENSIVE BULL TEST PROGRAM

Quality That Counts

Lot 5323 2 Loads of HEIFERS

Price: \$ _____ Buyer # _____

Donald Chriscoe Farm

Asheboro, NC - 40 miles south of Greensboro, NC

Affidavit Natural, Backgrounded, Weaned



Base Wt: 750 lbs. Wt Stop: 775 lbs. (25#) Variance: 150 lbs.

Pickup Date: September 4-12 **Estimated Head Count** 129

Slide/Shrink: 2% shrink and slide \$12/cwt topside only

Weigh: Certified ground scales at farm

Notice to load: 48 hours **Weaned:** 120+ days

Colors: 85% (109 hd) blk/bwf, 12 hd ch-x, 8 hd red

Flesh: Medium

Muscling: 95% #1, 5% #1.5

Frame: Medium

Nutrition: Bunk fed haylage and TMR (wet corn gluten, cotton) with access to mineral, hay, and pasture.

Vaccinations: Vista 5 (2x), Nuplura (1x), Vision 7 20/20 (1x), Ocuguard Pinkeye (1x)

Dewormer: Ivomec Inject. (2x)

Implants: None

Genetics: Commercial Angus-based. Mainly sired by Angus and SimAngus bulls.

Programs: Seller Affidavit

Heifers: Palpated, guaranteed open

Comments: Broke to bunks and waters. Reputational calves purchased from local producers and backgrounded at Chriscoe's for 100+ days. Owner affidavit natural - signed natural affidavits from original producers that will transfer with the cattle.

MACS Rep: Marcus Harward, 704-322-0840

Programs:

Natural
AFFIDAVIT

Elanco

MERCK
Animal Health

Quality That Counts

Lot 5324 1 Load of HEIFERS

Price: \$ _____ Buyer # _____

Falling Creek Cattle Co

Grantham, NC - 50 miles southeast of Raleigh, NC

Purchased Locally, Backgrounded, Weaned



Base Wt: 760 lbs. Wt Stop: 785 lbs. (25#) Variance: 150 lbs.

Pickup Date: September 8-12 **Estimated Head Count** 64

Slide/Shrink: 2% shrink and slide \$10/cwt topside only

Weigh: Hauled 10 miles, weighed on the truck on certified scales

Notice to load: 48 hours **Weaned:** 150+ days

Colors: 97% blk/bwf, 2 hd ch-x

Muscling: 95% #1, 5% #1.5

Nutrition: Bunk fed TMR (corn silage, cotton seed, chopped hay) with mineral.

Vaccinations: Vista Once (1x), Vista 5 (1x), Vision 7 20/20 (2x)

Dewormer: Ivermec (1x), Safeguard (1x), Cydectin (1x) **Implants:** None

Genetics: Commercial Angus-based.

Programs: No

Heifers: Open, not palpated.

Comments: Broke to bunks and waters. Docile. Purchased from local producers as 4-weights and weaned and backgrounded for over 150 days. Fancy heifers ready to go on feed carrying just a medium flesh. May be 1-2 with a blue eye.

MACS Rep: Jeff Martin, 910-379-9173

Programs:

PrimeVAC
BY MERCK ANIMAL HEALTH



Flesh: Medium

Frame: Medium

Lot 5325 1 Load of STRS/HFRS

Price: \$ _____ Buyer # _____

Tri-County Cattlemen

Sharon, SC - 40 miles southwest of Charlotte, NC

Home-Raised, Affidavit Natural, Backgrounded, Weaned, BQA Certified

~54 Steers Wt: 605 lbs. Wt. Stop: 640 lbs. Variance: 165 lbs.

~28 Hfrs Wt: 570 lbs. Wt. Stop: 605 lbs. Variance: 155 lbs.

Heifers sell \$15/cwt back

Pickup Date: September 17-19

Slide/Shrink: 2% shrink and slide \$14/cwt topside only

Weigh: Hauled 15-40 miles to central location, weighed on certified ground scales. Very good weigh up.

Notice: 48-72 hours **Weaned:** 45-55+ days

Colors: 97% blk/bwf, 2 hd ch-x

Muscling: 90% #1, 10% #1.5

Nutrition: Bunk fed 10-12# ph/pd of commodity blend with free choice mineral, pasture, and hay.

Vaccinations: Vista Once (1x), Vista 5 (1x), Vision 7 (2x)

Dewormer: Safeguard or Ivermectin (2x), Pour-On (1x) **Implants:** None

Genetics: 50% or more Angus. Sired by Angus, SimAngus, or Simmental bulls out of Angus, Sim-X, and Charolais-X cows.

Programs: Seller Affidavit

Preg-checked: Open, not palpated.

Comments: Broke to bunks and waters. A reputational set of calves that were all born last fall using similar genetics and nutrition. All calves were vaccinated mid-July and mid-August with the Merck PrimeVAC program. This load has just 6 producers coming together to make a good load (just 3 producers on the heifers) - McGill Bros (35 hd), R Thomson (15 hd), G Cruz (15 hd), J Cruz (6 hd), J Kingsmore (6 hd), and Circle K (5 hd). **Cannot load the same day as Tri-County steer load*

MACS Rep: Marcus Harward, 704-322-0840. Tri-County Coordinator, Brian Beer, 803-320-9360

Programs:

Natural AFFIDAVIT

PrimeVAC
BY MERCK ANIMAL HEALTH



TRI-COUNTY CATTLEMENS ASSOCIATION SALE



Flesh: 95% Medium, 5% Med+

Frame: 90% Med, 10% Large

Lot 5326 1 Load of STRS/HFRS

Price: \$ _____ Buyer # _____

Lewis Farms (John Lewis)

Chester, SC - 45 miles southwest of Charlotte, NC

Home-Raised, GAP-4, Affidavit Natural, Backgrounded, Weaned, BQA Certified

~42 Steers Wt: 625 lbs. Wt. Stop: 660 lbs. Variance: 140 lbs.
~39 Hfrs Wt: 560 lbs. Wt. Stop: 595 lbs. Variance: 130 lbs.
Heifers sell \$15/cwt back

Pickup Date: September 8-11

Slide/Shrink: 2% shrink and slide \$14/cwt topside only

Weigh: Certified ground scales at farm. Some hauled in 15 miles and weighed, will have a good weigh up.

Notice: 48 hours **Weaned:** 50+ days

Colors: Strs-100% blk/bwf. Hfrs-95% blk/bwf, 2 hd smoke

Muscling: 95% #1, 5% #1.5

Nutrition: Bunk fed 10-12# ph/pd of CPC 13% grower & Performance High Energy Plus 14 with pasture, mineral, and hay.

Vaccinations: Vista Once (1x), Vista 5 (1x), Nasalgen (1x), Vision 7 (1x), Vision 7 somnus (2x)

Dewormer: Safeguard (1x), ProMectin B (1x) **Implants:** None

Genetics: 50% or more Angus. Sired by Angus, SimAngus, and Simmental bulls out of Angus, Sim-X, and Charolais-X cows.

Programs: GAP-4; Seller Affidavit

Preg-checked: Open, not palpated.

Comments: Broke to bunks and waters. A very good set of reputational calves, all born last fall. They are triple vaccinated - vaccinated once on the cow in March and double vaccinated after weaning (vaccinated late July and mid-August). Calves are coming from 2-3 different weaning locations and sorted into loads the week of load out. The GAP Level 4 certificate transfers at no cost to the buyer. (GAP#23233, Exp 10/15/25) and also willing to sign natural affidavits. A very good set of reputational steers and heifers that should feed and finish as a big set of feeders. *Cannot load the same day as Lewis heifer load

MACS Rep: Marcus Harward, 704-322-0840. Tri-County Coordinator, Brian Beer, 803-320-9360

Programs:



TRI-COUNTY CATTLEMENS ASSOCIATION SALE



Flesh: Medium

Frame: 90% Med, 10% Large

Lot 5327 1 Load of STRS/HFRS

Price: \$ _____ Buyer # _____

Porter Farms

Mt Pleasant, NC - 25 miles northwest of Charlotte, NC

Home-Raised, GAP-4, Verified Natural, Backgrounded, Weaned

~50 Steers Wt: 625 lbs. Wt. Stop: 655 lbs. Variance: 180 lbs.
~32 Hfrs Wt: 600 lbs. Wt. Stop: 630 lbs. Variance: 110 lbs.
Heifers sell \$15/cwt back

Pickup Date: September 8-12

Slide/Shrink: 2% shrink and slide \$15/cwt topside only

Weigh: Certified MACS ground scales at farm

Notice: 48 hours **Weaned:** 75+ days

Colors: 80% blk/bwf, 20% red/rwf

Muscling: 95% #1, 5% #1.5

Nutrition: Bunk fed silage and commodity feed with free choice mineral, pasture, and hay.

Vaccinations: Bovi-Shield Gold One Shot (1x), Inforce 3 (1x), Vision 7 w/spur (2x)

Dewormer: Eprinex (2x) **Implants:** None

Genetics: ANGUS VERIFIED SIREs - 50-75% or more Angus. All calves are sired by Angus bulls out of Angus or Angus-X-Hereford cows.

Programs: GAP-4; IMI Verified Natural; NHTC; Source & Age; Seller Affidavit

Preg-checked: Open, not palpated.

Comments: Broke to bunks and waters. A very fancy set of docile calves that should finish as a big set of feeders coming from a good program. These calves were weaned late June and have been on pasture and getting a little bit of a silage/commodity feed ration. GAP-4 certificate can transfer at no cost to buyer (GAP#23517, Exp 10/26/25). Can also be EID tagged for verified natural, NHTC, Source and Age, and Angus Verified through IMI Global. May be a couple with tipped or small horns but we do have about 120 head to sort this load out of.

MACS Rep: Marcus Harward, 704-322-0840

Programs:



Flesh: Medium

Frame: Medium

Lot 5328 1 Load of STRS/HFRS

Price: \$ _____ Buyer # _____

Derek Adams

Mt Carmel, SC - 45 miles northwest of Augusta, GA

Home-Raised, Affidavit Natural, Backgrounded, Weaned



~25 Steers Wt: 630 lbs. Wt. Stop: 655 lbs. Variance: 150 lbs.

~50 Hfrs Wt: 685 lbs. Wt. Stop: 710 lbs. Variance: 150 lbs.

Heifers sell \$20/cwt back

Pickup Date: September 8-12 (load out after steer load)

Slide/Shrink: 2% shrink and slide \$14/cwt topside only

Weigh: Certified MACS ground scales at farm

Notice: 48 hours

Weaned: 70+ days

Colors: 61 hd blk/bwf, 4 hd ch-x, 5 hd red/rwf, 5 hd skunk tail

Muscling: 95% #1, 5% #1.5

Nutrition: Bunk fed 8-10# ph/pd of Oglethorpe Grower feed with free choice MultiKare mineral, pasture, and hay.

Vaccinations: Vista Once SQ (1x), Pyramid 5 (1x), Covexin 8 (1x), Vision 7 w/spur (1x)

Dewormer: Cydectin (1x)

Implants: None

Genetics: 50-75% Angus. Sired by Angus and Red Angus bulls out of Angus-X and Char-X cows.

Programs: Seller Affidavit

Preg-checked: Open, not palpated.

Comments: Broke to bunks and waters. Calves were born last fall, double vacc'd, weaned 70+ days, and are docile. A very nice set of backgrounded, weaned calves ready to go to feed. Seller will sign all-natural affidavits as needed.

MACS Rep: Austin Landreth, 864-484-7153

Programs:

Natural
AFFIDAVIT



Flesh: Medium

Frame: Medium

Lot 5329 1 Load of STRS/HFRS

Price: \$ _____ Buyer # _____

Calhoun Farms (Davis Calhoun)

Clio, SC - 40 miles northwest of Florence, SC

Home-Raised, Affidavit Natural, Backgrounded, Weaned, BQA Cert.



~50 Steers Wt: 700 lbs. Wt. Stop: 740 lbs. Variance: 150 lbs.

~25 Hfrs Wt: 700 lbs. Wt. Stop: 740 lbs. Variance: 150 lbs.

Heifers sell \$15/cwt back

Pickup Date: September 15-19

Slide/Shrink: 2% shrink and slide \$12/cwt topside only

Weigh: Hauled 10 miles, weighed on the truck

Notice: 48 hours

Weaned: 90+ days

Colors: STRS - 33 hd blk/bwf, 22 hd red/rwf. HFRS - 28 hd blk/bwf, 7 hd red **Flesh:** Medium

Muscling: 90% #1, 10% #1.5 **Frame:** Medium

Nutrition: Bunk fed oats 10# ph/pd with free choice pasture, high mag mineral, and hay

Vaccinations: Pyramid 5 + Presponse (1x), Pyramid 10 (1x), Caliber 7 (2x)

Dewormer: Ivomec (2x)

Implants: None

Genetics: 85% or more Angus/Red Angus. Sired by black Angus bulls from Driggers Cattle Co and Red Angus bulls from Bull Hill Ranch out of 75% Red Angus, 25% Simmental cows.

Programs: Seller Affidavit

Preg-checked: Open, not palpated.

Comments: Broke to bunks and waters. A fancy set of black and red Angus calves. There are 55 steers and 35 heifers to sort one load out of or buyer can take all 90. Calves qualify as all-natural are Verified Natural and NHTC through BeefTraxx and wil sign natural affidavits as needed. They are mainly running on pasture with just a little feed carrying just a green grass flesh.

MACS Rep: Marcus Harward, 704-322-0840

Programs:

Natural
AFFIDAVIT



Lot 5330 0.9 Load of STRS/HFRS

Price: \$ _____ Buyer # _____

Greg Beer

Richburg, SC - 30 miles south of Charlotte, NC

Home-Raised, Affidavit Natural, Backgrounded, Weaned, BQA Certified

~29 Steers Wt: 795 lbs. Wt. Stop: 825 lbs. Variance: 200 lbs.

~28 Hfrs Wt: 700 lbs. Wt. Stop: 730 lbs. Variance: 200 lbs.

Heifers sell \$10/cwt back

Pickup Date: September 22-26

Slide/Shrink: 2% shrink and slide \$10/cwt topside only

Weigh: Certified ground scales at farm

Notice: 48 hours

Weaned: 60+ days

Colors: 100% blk/bwf

Muscling: 95% #1, 5% #1.5

Nutrition: Bunk fed haylage & CPC high energy feed with free choice mineral, pasture, and hay.

Vaccinations: Bovi-Shield Gold 5 (2x), Presponse (1x), Ultrabac 7 (2x)

Dewormer: Safeguard (1x), Ivermectin (1x)

Implants: None

Genetics: 50-75% Angus. Sired by Angus and SimAngus bulls out of Angus and Balancer-X cows.

Programs: Seller Affidavit

Preg-checked: Open, not palpated.

Comments: Broke to bunks and waters. A good set of high-growth, Angus-based steers and heifers that should finish as a big set of fed cattle. Qualify as affidavit natural and will sign buyer's affidavits as needed. Calves are all out on grass pasture, just brought into lots to video.

MACS Rep: Marcus Harward, 704-322-0840

Programs:

Natural
AFFIDAVIT

zoetis

Boehringer
Ingelheim



Flesh: Medium

Frame: Medium

THE LARGEST COMMERCIAL BRED HEIFER EVENT IN THE CAROLINAS

SEPTEMBER SELECT

Bred Heifer Sale

SATURDAY • SEPTEMBER 20, 2025

12:00 NOON EST IN NORWOOD, NC AND ON DV AUCTION

OFFERING OVER 250 COMMERCIAL FEMALES

BREEDS ANGUS, CHAROLAIS, SIMMENTAL, GELBVIEH, ULTRABLACK, AND RED ANGUS.

FEATURING GENETICS from Yon Family Farms, EBS Farms, Uwharrie Ridge Farms, Green Hills Gelbvieh, Harward Sisters, Bieber, and more.

CALVING ALL HEIFERS ARE FALL CALVING BRED FEMALES DUE FROM SEPTEMBER TO DECEMBER. SOME WILL SELL WITH A CALF ALREADY AT SIDE.

VIEW CATALOG, SALE VIDEOS, AND BID ONLINE AT **WWW.DVAUCTION.COM**



DVAuction
Broadcasting Real-Time Auctions



SALE LOCATION STANLY COUNTY LIVESTOCK MARKET
13215 INDIAN MOUND RD. NORWOOD, NC 28128

Marcus Harward: 704-322-0840 • Brooke Harward: 704-322-9770

Catherine Edwards: 704-550-7920

WWW.MACSVIDEO.COM

NORTH CAROLINA FALL Harvest

51st Annual Sale

September 6, 2025

1:00 PM Union Grove, North Carolina



LOT 1B

W/C Bet On Red x Wood Fully Loaded
AI'd to WHF Point Proven



LOT 2

Follow Me x VPI Savannah
AI'd to WCC/RRF Troubadour



LOT 4

GAR Sure Fire x Hooks Bounty
AI'd to ES/Five Star Limitless



LOT 5

Private Stock x CCR Wide Range
AI'd to ES/Five Star Limitless



LOT 9

TJ Gold x Nichols Manifest
AI'd to LRS Dutton



LOT 20

CDI/NF Honor Guard x Beyergo Boomer



LOT 34

JSUL Something About Mary x Peine Rosie 677D
AI'd to Volk Backdraft



LOT 46

W/C Bank On It x TX Miss H6557



LOT 47

W/C Bet On Red x CDI Innovator



DOUG & DEBBIE PARKE
859.421.6100
DREW & HOLLI HATMAKER
423.506.8844
WWW.DPSALESLLC.COM



Selling Breds, Cow/calf pairs,
Opens, and Genetic lots Purebred
Simmental & SimAngus™



BROOKE HARWARD, executive sec.
704.322.9770
WWW.NCSIMMENTAL.COM

MID-ATLANTIC CATTLE SALES

WWW.MACSVIDEO.COM



UPCOMING SALES

September 2
September 16
October 7
October 21

November 4
November 18
December 2
December TBD

Our motto - Working hard for you today and every day!



To view the sale or bid online, visit www.DVAuction.com. Find the "Mid-Atlantic Cattle Sales (Richfield, NC)" sale and click on "Details." From this page you can view the catalog, videos, or log in to watch the sale. If you have an account, log in and view the sale. If you do not, you must create an account under the "Create New Account" tab in the upper left hand corner of the screen. You will need to confirm this account through your e-mail.

You DO NOT have to be approved for a buyer's number just to watch the sale but you will still need to create an account with DVAuction.



Mid-Atlantic Cattle Sales, LLC
28978 Misenheimer Rd. Richfield, NC 28137
info@macsvideo.com • www.MACSvideo.com

**Bonded through USDA Packers & Stockyards*

SALE TERMS AND CONDITIONS - PAGE 1 OF 2

MID-ATLANTIC CATTLE SALES, LLC

1. Each bidder must be pre-registered and have a Buyer Number to participate in the auction. To register for the auction call 704-322-9770, 704-322-0840, or register through DV Auction. By participating in the auction, the Buyer expressly agrees to adhere to these Terms and Conditions and to the provisions set forth in the Livestock Purchase Agreement sent after the auction. All cattle being offered for sale are under standard Contracts for Sale. All cattle are purchased under standard Contracts for Purchase by the Buyers.
2. The cattle offered for sale are indicated on the sale sheets or online sale description as described to the MACS representatives by the owner. They are described by lot numbers, seller, location of the cattle, numbers of head, estimated weight, management practices, delivery date, conditions of sale and delivery, and verified programs. Representatives for each load are listed under each respective lot. Every effort has been made to assure the correctness of this information but all announcements from the auctioneer or official auction staff prior to or during the sale shall take precedence over printed matter herein.
3. Auction bids will be taken as voice bids by telephone and in person or online bids through DV Auction. Bids are asked with each lot of cattle and will be sold to the highest bidder on the basis of estimated weight. Seller reserves the right to "no sale" the load lot(s) of their cattle at the time the highest bid is made as long as the "no sale" announcement is made prior to the next lot being sold. Any departure from this procedure will be announced and all announcements made from the auctioneer or official auction staff will take precedence over printed matter herein.
4. The Auctioneer reserves the right to reject any and all bids. Auctioneer will settle all disputed bids. If a dispute arises between two or more bidders, the Auctioneer may immediately put the lot up for sale again and resell to the highest bidder. The decision of the Auctioneer shall be final and absolute.
5. One full load of stocker or feeder cattle will be contracted for approximately 48,000 lbs. and the respective head count at the base weight at the full truckload weight. No freight adjustment will be given if the average weight at delivery is under the base weight and the head count delivered is within 95% of the contracted head count. Mid-Atlantic Cattle Sales and its representatives will act as agents only in the sale of lots of cattle. As the marketing agency we cannot guarantee a minimum or maximum amount of shrink on any load. Any weight guarantees in regard to shrink must be given by Seller. Mid-Atlantic Cattle Sales cannot guarantee off truck weights.
6. Cattle that are picked up after the stated delivery dates will be subject to a 2# per head per day increase on the base weight and any weight stops for each day late after the last stated delivery date. Any deviation from this 2# per head per day will be posted in the catalog and announced on sale day.
7. Most loads have weight stops at 25-50 lbs. over the base weight. The individual weight stops are posted on each lot. If a weight stop is listed, cattle will slide after shrink up to the posted weight stop and be sold on a total net weight at the posted weight stop. Any pounds after shrink over the weight stop will not be billed to the buyer or paid to the seller unless other arrangements have been made in writing.
8. All cattle will be sold on a sliding scale as listed on each load. The "price slide" will go into effect when the average net weight of the live cattle is over the base weight the cattle are sold at. This will go into effect starting at 1 pound over the base weight.
Slide Example: The cattle were sold at a base weight of 700 lbs with a \$5/cwt topside slide for \$150/cwt and at delivery weighed 725 lbs after shrink. The cattle would slide \$1.25 for a new price of \$148.75 at 725 lbs.
[Slide (\$5/cwt) X Pounds Over (25) = \$1.25/cwt] Also can be shown as $[\$5 / 100 \times 25 = \$1.25]$
9. On split loads the heifer price will be \$____/cwt (as stated in the lot information) back of the original price of the steers. The steers will be based at their purchase price and base weight and the heifers will be based at their purchase price and base weight. At delivery, slides and weight stops will be calculated separately on each group.

*Updated March 28, 2023
Updated July 1, 2024*

SALE TERMS AND CONDITIONS - PAGE 2 OF 2

MID-ATLANTIC CATTLE SALES, LLC

10. The Buyer is responsible for all arrangements and regulatory requirements with respect to the transportation of the livestock and the Buyer is responsible for sending trucks to adequately load the number of head and/or the total weight contracted in order to legally transport them to their final destination. Cattle sold will be sorted and delivered to the stated weigh point by the Seller and weighed on a certified scale. Buyer will receive the cattle at point of weighing under conditions as stated with respect to each lot. Buyer will take ownership of the cattle at the point of loading.

11. Health entry requirements for the state of entry are the responsibility of the Buyer. The Seller will furnish any health certificates required for the state of origin and Federal Law at the request of the buyer. If additional health certificates, documentation or tests are required for shipment to the Buyer's destination, it shall be at the Buyer's request and expense.

12. Any heifer that is sold as guaranteed open and is determined to be bred by the buyer will receive a \$200 per bred heifer refund given appropriate documentation is provided within 90 days (updated) of the cattle being delivered. Documentation must include lot information, heifer identification, and veterinarian documentation. **UPDATE: Effective July 1, 2024 all heifer loads, unless explicitly stated in the catalog, are sold with a 90-day bred heifer refund guarantee. The catalog will explicitly state if heifers have been checked for pregnancy prior to delivery so that the buyer can plan accordingly.**

13. Payment by Buyer is due and payable in accordance with USDA P&S prompt pay policy upon delivery of the cattle and at such times as the value of the cattle is determined based on weight (subject to condition), price (subject to condition), and any other conditions stated at time of sale. Payment must be sent to Mid-Atlantic Cattle Sales within 1 day after the cattle are received by the Buyer. We request that all payments be sent by Wire Transfer, ACH, or overnight delivery of a check via FedEx or UPS. Payment sent via the U.S. Postal Service (1st Class or Priority Mail) are expected to be received within 7 business days of delivery. Any fees incurred for sending payment will be at the Buyer's expense.

14. Mid-Atlantic Cattle Sales does not warrant the harvest date on source and age verified cattle and cannot guarantee back verification on any program requiring signed affidavits or 3rd party verification. Mid-Atlantic Cattle Sales will make all efforts to ensure verifications are met, but it is the Buyer's responsibility to verify all claims of the Seller to fit specific programs prior to purchase.

15. There are no implied warranties of merchantability or fitness for a particular purpose on any livestock sold. Seller does not warrant that the livestock are free from any latent defect, condition, sickness, or disease. Seller does not assume responsibility for any loss after the livestock are delivered, which results from any latent defect, condition, sickness, or disease.



Marcus Harward: 704-322-0840

Brooke Harward: 704-322-9770

info@macsvideo.com

www.MACSvideo.com

28978 Misenheimer Rd • Richfield, NC 28137