

MID-ATLANTIC CATTLE SALES

*A family owned and operated livestock video auction
with 30+ years of livestock marketing experience.*

AUGUST 2, 2022

TUESDAY AT 1:00 PM EDT

WWW.MACSVIDEO.COM



Selling 40 Loads!



Mid-Atlantic Cattle Sales, LLC
28978 Misenheimer Rd. Richfield, NC 28137
704-322-0840 • 704-322-9770
info@macsvideo.com

DVAuction
Broadcasting Real-Time Auctions

Video Sale INFORMATION

The cattle offered for sale are indicated on the following sale sheets and the online sale description as described to the MACS representatives by the owner. They are described by lot numbers, seller, location of cattle, numbers of head, estimated weight, management practices, delivery date, conditions of sale and delivery, and verified programs. Representatives for each load are listed under each respective lot. Every effort has been made to assure the correctness of this information but all announcements from the auctioneer or official auction staff prior to or during the sale shall take precedence over printed matter herein.

SALE DATE & TIME:

Tuesday - August 2, 2022

1:00 pm edt. | 12:00 pm cdt.

CONTACT:

Marcus Harward704-322-0840

Brooke Harward704-322-9770

Jeff Martin910-379-9173

www.MACSvideo.com

View catalog, videos, and additional updates online.

www.vimeo.com/macsvideo

All videos of sale cattle are posted directly on our video page listed above and on DV Auction

***MACS Sale Terms and Conditions are listed in this catalog and online. All loads will sell under these terms and conditions.**

Bidding Options

*We want to offer you the best opportunities we can to participate in our sales each month.
Below are three options for bidding on the sale.*

1. CONFERENCE CALL

After 12:45 eastern on sale day, you can call the auction number to listen and bid on the sale. To bid during the sale, you will use your buyer number to bid on the lot. Contact Marcus or Brooke prior to the sale to receive a buyer's number. *Please keep background noise to a minimum as we will have multiple people on the line. To mute your phone, press *6. To un-mute, press *6 again.*

CALL-IN NUMBER: 1-866-906-9888

PASSCODE: 9461720 #

2. DV AUCTION - INTERNET VIEWING AND BIDDING



To view the sale or bid online, visit www.DVAuction.com. Find the "Mid-Atlantic Cattle Sales (Richfield, NC)" sale and click on "Details." From this page you can view the catalog, videos, or log in to watch the sale. If you have an account, log in and view the sale. If you do not, you must create an account under the "Create New Account" tab in the upper left hand corner of the screen. You will need to confirm this account through your e-mail. *It is best to do this at least a day before the sale.*

You DO NOT have to be approved just to watch the sale but you will still need to create an account with DVAuction. To register for a buyer's number, call Brooke at 704-322-9770 prior to the sale to be approved to bid online.

3. ABSENTEE BIDDING

For people who can not view or bid on the sale at sale time, we have can handle closed bids in house and assist you with absentee bidding. Contact Marcus at 704-322-0840 for more information.

*"The Lord is my light and my salvation-- whom shall I fear?
The Lord is the stronghold of my life-- of whom shall I be afraid?"*

PSALM 27:1



TABLE OF CONTENTS

TUESDAY - AUGUST 2, 2022 - 1:00 PM EDT

PAGE ONE

Video Sale Information

Pg 2

Table of Contents

Pgs 3-4

LOT NUMBER	LOAD NUMBER	TYPE	BASE WT.	PRODUCER	STATE	DELIVERY	PAGE NUMBER
Lot 2230	1 Load	Steers	550 lbs.	Hannah Cattle Company	NC	Aug.	Pg 5
Lot 2231	0.7 Load	Steers	575 lbs.	Allen Farms *GAP VNB-NE3 NHTC	NC	Aug.	Pg 5
Lot 2232	1 Load	Steers	580 lbs.	TRF Farms *GAP VNB NHTC	NC	Aug.	Pg 6
Lot 2233	1 Load	Steers	620 lbs.	Coastal Carolina Cattle Alliance	NC	Aug.	Pg 6
Lot 2234	1 Load	Steers	660 lbs.	M & M Farms *GAP VNB NHTC	NC	Aug.	Pg 7
Lot 2235	1 Load	Steers	675 lbs.	TRF Farms *GAP VNB NHTC	NC	Aug.	Pg 7
Lot 2236	1 Load	Steers	700 lbs.	Allen Farms *GAP VNB-NE3 NHTC	NC	Aug.	Pg 8
Lot 2237	1 Load	Steers	700 lbs.	Mitchell Farms & Forrest *GAP VNB-NE3 NHTC	SC	Aug.	Pg 8
Lot 2238	1 Load	Steers	700 lbs.	Scotton Farms	NC	Aug.	Pg 9
Lot 2239	0.5 Load	Steers	725 lbs.	DA Hill Farms *GAP VNB NHTC	NC	Aug.	Pg 9
Lot 2240	1 Load	Steers	735 lbs.	TRF Farms *GAP VNB NHTC	NC	Aug.	Pg 10
Lot 2241	1 Load	Steers	750 lbs.	Coastal Carolina Cattle Alliance	NC	Aug.	Pg 10
Lot 2242	1 Load	Steers	775 lbs.	Bar D Cattle Company *GAP VNB NHTC	SC	Oct.	Pg 11
Lot 2243	1 Load	Steers	775 lbs.	Hannah Cattle Company	NC	Aug.	Pg 11
Lot 2244	2 Loads	Steers	800 lbs.	Overbridge Farms *GAP VNB NHTC	SC	Sep.	Pg 12
Lot 2245	1 Load	Steers	800 lbs.	M & M Farms *GAP VNB NHTC	NC	Aug.	Pg 12
Lot 2246	1 Load	Steers	825 lbs.	TRF Farms *GAP VNB NHTC	NC	Aug.	Pg 13
Lot 2247	1 Load	Steers	825 lbs.	Hiatt Farms	NC	Aug.	Pg 13
Lot 2248	1 Load	Steers	850 lbs.	DA Hill Farms *GAP VNB NHTC	NC	Aug.	Pg 14
Lot 2249	0.7 Load	Heifers	510 lbs.	TRF Farms *GAP VNB NHTC	NC	Aug.	Pg 15
Lot 2250	1 Load	Heifers	610 lbs.	TRF Farms *GAP VNB NHTC	NC	Aug.	Pg 15
Lot 2251	1 Load	Heifers	615 lbs.	Coastal Carolina Cattle Alliance	NC	Aug.	Pg 16
Lot 2252	1 Load	Heifers	650 lbs.	Mitchell, Buzhardt, Forrest *GAP VNB-NE3 NHTC	SC	Aug.	Pg 16

TABLE OF CONTENTS CONTINUED ON NEXT PAGE...

* = All-Natural **GAP**= GAP Certified **VNB**= Verified Natural **NE3**=NeverEver 3
NHTC= Non-Hormone Treated **CARE**= BeefCARE Certified

Most loads have weight stops at 25-50 lbs. over the base weight.

UPDATE: The individual weight stops are posted on each lot. Cattle that are picked up after the stated delivery dates will be subject to a **2# PER DAY** increase on the base weight and any weight stops for each day late after the last stated delivery date.



TABLE OF CONTENTS

TUESDAY - AUGUST 2, 2022 - 1:00 PM EDT

PAGE TWO

LOT NUMBER	LOAD NUMBER	TYPE	BASE WT.	PRODUCER	STATE	DELIVERY	PAGE NUMBER
Lot 2253	1 Load	Heifers	650 lbs.	Patrick County Cattlemen	VA	Aug.	Pg 17
Lot 2254	1 Load	Heifers	660 lbs.	M & M Farms ★ GAP VNB NHTC	NC	Aug.	Pg 17
Lot 2255	1 Load	Heifers	675 lbs.	Mountain View Farms	NC	Aug.	Pg 18
Lot 2256	1 Load	Heifers	690 lbs.	TRF Farms ★ GAP VNB NHTC	NC	Aug.	Pg 18
Lot 2257	1 Load	Heifers	715 lbs.	Overbridge Farms ★ GAP VNB NHTC	SC	Sep.	Pg 19
Lot 2258	0.9 Load	Heifers	750 lbs.	DA Hill Farms ★ GAP VNB NHTC	NC	Aug.	Pg 19
Lot 2259	1 Load	Heifers	765 lbs.	Ridgecrest Farms	NC	Aug.	Pg 20
Lot 2260	1 Load	Steers Heifers	660 lbs. 660 lbs.	Cox Cattle Company ★	NC	Aug.	Pg 20
Lot 2261	1 Load	Steers Heifers	720 lbs. 620 lbs.	WestLake Farms ★ GAP VNB-NE3 NHTC	SC	Aug.	Pg 21
Lot 2262	1 Load	Steers Heifers	725 lbs. 650 lbs.	S & K Farm ★ GAP VNB-NE3 NHTC	SC	Aug.	Pg 21
Lot 2263	1 Load	Steers Heifers	725 lbs. 680 lbs.	Wes Knight Farm ★ GAP VNB-NE3 NHTC	SC	Aug.	Pg 22
Lot 2264	1 Load	Steers Heifers	730 lbs. 625 lbs.	Rushton Farms ★ GAP VNB-NE3 NHTC	SC	Aug.	Pg 22
Lot 2265	1 Load	Steers Heifers	760 lbs. 740 lbs.	Buzhardt 5 Farms ★ GAP VNB-NE3 NHTC	SC	Aug.	Pg 23
Lot 2266	1 Load	Steers Heifers	760 lbs. 680 lbs.	Adams Farms	SC	Aug.	Pg 23
Lot 2267	1 Load	Steers Heifers	825 lbs. 715 lbs.	Hall Farms ★ GAP VNB-NE3 NHTC	SC	Aug.	Pg 24
Lot 2268	1 Load	Steers Heifers	900 lbs. 850 lbs.	Bowman Farms ★ GAP VNB NHTC	SC	Aug.	Pg 24

August 4 th Norwood Graded Feeder Calf Sale	Pg 25
Upcoming Sale Dates	Pg 26
DV Auction Online Bidding	Pg 27
MACS Sale Terms & Conditions	Pg 28

★ = All-Natural
 GAP = GAP Certified
 VNB = Verified Natural
 NE3 = NeverEver 3
NHTC = Non-Hormone Treated
CARE = BeefCARE Certified

Most loads have weight stops at 25-50 lbs. over the base weight.

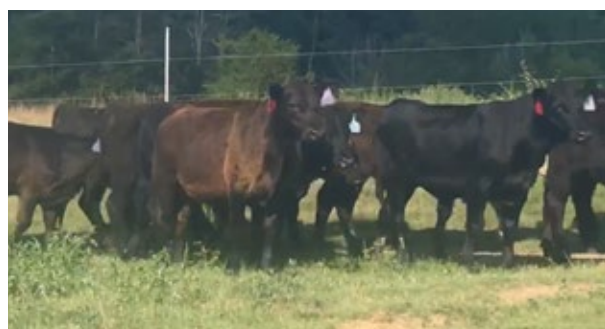
UPDATE: The individual weight stops are posted on each lot. Cattle that are picked up after the stated delivery dates will be subject to a **2# PER DAY** increase on the base weight and any weight stops for each day late after the last stated delivery date.

Lot 2230 1 Load of STEERS

Price: \$ _____ Buyer # _____

Hannah Cattle Company (Matt Hannah)

Advance, NC - 25 miles northeast of Statesville, NC

Backgrounded, Weaned, BQA Certified**Base Weight:** 550 lbs. **Wt. Stop:** 590 lbs. **Variance:** 125 lbs.**Pickup Date:** August 22-26 **Estimated Head Count** 88**Slide/Shrink:** 2% shrink and slide \$10/cwt topside only**Weigh:** Hauled 15 miles, weighed on truck (TA exit 170, Mocksville)**Notice to load:** 48 hours **Weaned:** 90+ days**Colors:** 100% blk/bwf**Muscling:** 90% #1, 10% #1.5**Nutrition:** Bunk fed 4-5 lbs. of 13% CPC commodity feed with free choice mineral, pasture, and hay.**Vaccinations:** PrimeVAC - Vista Once (1x), Vista 5 (1x), Nasalgen IP (1x), Cavalry 9 (2x)**Dewormer:** Safeguard (1x), Longrange (1x) **Implants:** Revalor G**Genetics:** Commercial Angus-based.**Natural Status:** No**Comments:** Broke to bunks and waters. 120 head to sort from. Put together from local producers, triple vaccinated, and backgrounded on pasture being fed just a little bit to keep them coming up.**MACS Rep:** Jimmy Dagenhart, 704-425-3587**Programs:****Flesh:** Medium**Frame:** Medium**Lot 2231 0.7 Load of STEERS**

Price: \$ _____ Buyer # _____

Allen Farms (Scotty Allen)

Polkton, NC - 12 mi south of Norwood, NC; 25 mi E of Charlotte, NC

Home-Raised, GAP-4, Verified Natural, Backgrounded, Weaned, BQA Cert.**Base Weight:** 575 lbs. **Wt. Stop:** 610 lbs. **Variance:** 150 lbs.**Pickup Date:** August 4-12 **Estimated Head Count** 58**Slide/Shrink:** 2% shrink and slide \$10/cwt topside only**Weigh:** Certified MACS ground scales at farm**Notice to load:** 48 hours **Weaned:** 60+ days**Colors:** 100% blk/bwf**Muscling:** 90% #1, 10% #1.5**Nutrition:** Bunk fed 12# of 13% complete feed, grazing sudan & crabgrass with free choice minerals and hay**Vaccinations:** Vista Once (1x), Vista 5 (1x), Vision 7 w/somnus (1x), Vision 7 (1x), Fusoguard (2x)**Dewormer:** Ivermec, Safeguard **Implants:** None**Genetics:** 75%+ Angus - Sired by high-performing Angus bulls and out of commercial Angus cows. Angus Verified sires - Genetic Merit Scores also qualify for CAB Targeting the Brand.**Natural Status:** GAP-4; AngusLink NeverEver3; NHTC; Source and Age; Seller Affidavit**Comments:** Broke to bunks and waters. Born Oct.-Dec. with complete records and EID tagged. A fancy set of docile, high-quality, high-performing genetics from a reputational program. DNA tested through NeoGen with a score of 6.8, ranking high as Igenity Terminal Elite (top 25% for carcass and growth). GAP-4 certified (#18155, Exp. 7/11/23).**MACS Rep:** Bruce Shankle, 704-694-8686**Programs:****Flesh:** Medium**Frame:** Medium

Lot 2232 1 Load of STEERS

Price: \$ _____ Buyer # _____

TRF Farms

Lawndale, NC - 20 miles north of Shelby, NC

Home-Raised, GAP-4, Verified Natural, Backgrounded, Weaned, BQA Cert.

Base Weight: 580 lbs. **Wt. Stop:** 615 lbs. **Variance:** 150 lbs.**Pickup Date:** August 10-11 **Estimated Head Count** 84**Slide/Shrink:** 2% shrink and slide \$10/cwt topside only**Weigh:** Hauled 15 miles, sorted, weighed on certified ground scales**Notice to load:** 48 hours **Weaned:** 45+ days**Colors:** 95% blk/bwf, 5% red/rwf or ch-x**Flesh:** Medium**Muscling:** 95% #1, 5% #1.5**Frame:** Medium**Nutrition:** Bunk fed 7# ph/pd of 14% feed with free choice mineral, pasture, and hay.**Vaccinations:** Vista Once SQ (1x), Vista 5 (1x), Vision 7 (2x)**Dewormer:** Dectomax**Implants:** None**Genetics:** Predominantly Angus-based sired by Angus, Hereford, or SimAngus bulls. RWF are rednecked type cattle.**Natural Status:** GAP-4; IMI Verified Natural; NHTC; Source & Age; Seller Affidavit**Comments:** Broke to bunks and waters. A reputational set of calves born last fall and under very good management protocols for health, feed, and genetics. Calves are all 840 EID tagged and verified natural. An excellent set of calves. GAP-4 Certified and can transfer at no cost to buyer (#16570, Exp. 8/12/22). TRF Farms is a partnership of Thompson & Son, Royster Turkey Farm, & Fieldstone Farm.**MACS Rep:** Marcus Harward, 704-322-0840**Programs:****Lot 2233 1 Load of STEERS**

Price: \$ _____ Buyer # _____

Coastal Carolina Cattle Alliance

Kenansville, NC - 70 mi SE of Raleigh, NC; 4 mi E of I-40

Home-Raised, Backgrounded, Weaned, EID Tagged, BQA Certified

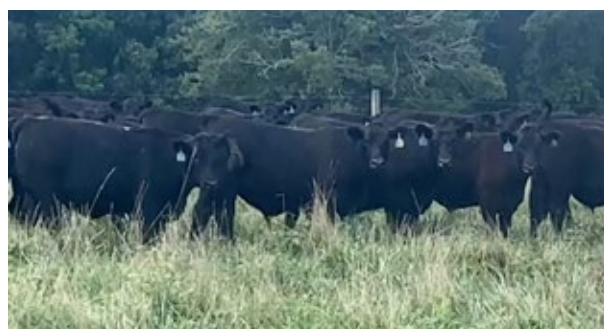
Base Weight: 620 lbs. **Wt. Stop:** 660 lbs. **Variance:** 135 lbs.**Pickup Date:** August 22-26 **Estimated Head Count** 78**Slide/Shrink:** 1% shrink and slide \$8/cwt topside only**Weigh:** Hauled 10-20 miles, sorted & weighed on certified ground scales**Notice to load:** 48-72 hours **Weaned:** 60+ days**Colors:** 94% blk/bwf, 6% red/rwf**Flesh:** Medium**Muscling:** 95% #1, 5% #1.5**Frame:** Medium**Nutrition:** Bunk fed a complete feed with free choice mineral, pasture, and hay.**Vaccinations:** Double Vaccinated on Zoetis or Merck VAC 45 programs. Modified live respiratory (2x), Pasteurella (1x), Blackleg (2x)**Dewormer:** Yes (2x)**Implants:** Mixed**Genetics:** Primarily Angus-based. Sired by Angus, SimAngus, or Hereford bulls (genetics include Yon, Gibbs, Myers, Knoll Crest, Springfield, etc.)**Natural Status:** No**Comments:** Broke to bunks and waters. Calves born last fall, have been 840 EID tagged and tagged with a CCCA visual tag. Reputational producers who have worked together to use similar management and vaccination programs. 7 producers on this load.**MACS Rep:** Jeff Martin, 910-379-9173**Programs:**

Lot 2234 1 Load of STEERS

Price: \$ _____ Buyer # _____

M & M Farms

Snow Camp, NC - 20 miles southeast of Greensboro, NC

Home-Raised, GAP-4, Verified Natural, NHTC, Backgrounded, Weaned**Base Weight: 660 lbs. Wt. Stop: 695 lbs. Variance: 200 lbs.****Pickup Date:** August 8-12**Estimated Head Count** 73**Slide/Shrink:** 2% shrink and slide \$7/cwt topside only**Weigh:** Certified MACS ground scales at farm**Notice to load:** 48 hours**Weaned:** 60+ days**Colors:** 96% blk/bwf, 2-3 hd ch-x**Flesh:** Medium**Muscling:** 95% #1, 5% #1.5**Frame:** Medium**Nutrition:** Bunk fed 13% commodity feed with free choice mineral, pasture, and hay.**Vaccinations:** Vista Once (1x), Vista 5 (1x), Vision 7 (2x)**Dewormer:** Dectomax (2x)**Implants:** None**Genetics:** 65%+ Angus. Sired by high-performing Angus and SimAngus bulls out of Angus-X cows.**Natural Status:** GAP-4; BeefTraxx Verified Natural; NHTC; Source & Age; Seller Affidavit**Comments:** Broke to bunks and waters. A reputational set of fancy calves, all born last fall. 140 steers running together to sort two loads for (8 wts and 6 wts), would like to load the same day if possible. GAP certificate can transfer at no cost to buyer (#15749, Exp. 8/18/22). Will be EID tagged for Verified Natural if needed.**MACS Rep:** Marcus Harward, 704-322-0840**Programs:****Lot 2235 1 Load of STEERS**

Price: \$ _____ Buyer # _____

TRF Farms

Lawndale, NC - 20 miles north of Shelby, NC

Home-Raised, GAP-4, Verified Natural, Backgrounded, Weaned, BQA Cert.**Base Weight: 675 lbs. Wt. Stop: 710 lbs. Variance: 60 lbs.****Pickup Date:** August 10-11**Estimated Head Count** 72**Slide/Shrink:** 2% shrink and slide \$7/cwt topside only**Weigh:** Hauled 15 miles, sorted, weighed on certified ground scales**Notice to load:** 48 hours**Weaned:** 45+ days**Colors:** 92% blk/bwf, 7% red/rwf, 1% ch-x**Flesh:** Medium**Muscling:** 95% #1, 5% #1.5**Frame:** Medium**Nutrition:** Bunk fed 7# ph/pd of 14% feed with free choice mineral, pasture, and hay.**Vaccinations:** Vista Once SQ (1x), Vista 5 (1x), Vision 7 (2x)**Dewormer:** Dectomax**Implants:** None**Genetics:** Predominantly Angus-based sired by Angus, Hereford, or SimAngus bulls. RWF are rednecked type cattle.**Natural Status:** GAP-4; IMI Verified Natural; NHTC; Source & Age; Seller Affidavit**Comments:** Broke to bunks and waters. A reputational set of calves born last fall and under very good management protocols for health, feed, and genetics. Calves are all 840 EID tagged and verified natural. An excellent set of calves. GAP-4 Certified and can transfer at no cost to buyer (#16570, Exp. 8/12/22). TRF Farms is a partnership of Thompson & Son, Royster Turkey Farm, & Fieldstone Farm.**MACS Rep:** Marcus Harward, 704-322-0840**Programs:**

Lot 2236 1 Load of STEERS

Price: \$ _____ Buyer # _____

Allen Farms (Scotty Allen)

Polkton, NC - 12 mi south of Norwood, NC; 25 mi E of Charlotte, NC

Home-Raised, GAP-4, Verified Natural, Backgrounded, Weaned, BQA Cert.

Base Weight: 700 lbs. **Wt. Stop:** 735 lbs. **Variance:** 180 lbs.**Pickup Date:** August 4-12 **Estimated Head Count** 70**Slide/Shrink:** 2% shrink and slide \$6/cwt topside only**Weigh:** Certified MACS ground scales at farm**Notice to load:** 48 hours **Weaned:** 60+ days**Colors:** 69 hd blk/bwf, 1 hd ch-x**Muscling:** 95% #1, 5% #1.5**Nutrition:** Bunk fed 12# of 13% complete feed, grazing sudan & crabgrass with free choice minerals and hay**Vaccinations:** Vista Once (1x), Vista 5 (1x), Vision 7 w/somnus (1x), Vision 7 (1x), Fusoguard (2x)**Dewormer:** Ivermec, Safeguard**Implants:** None**Genetics:** 75%+ Angus - Sired by high-performing Angus bulls and out of commercial Angus cows. Angus Verified sires - Genetic Merit Scores also qualify for CAB Targeting the Brand.**Natural Status:** GAP-4; AngusLink NeverEver3; NHTC; Source and Age; Seller Affidavit**Comments:** Broke to bunks and waters. Born Oct.-Dec. with complete records and EID tagged. A fancy set of docile, high-quality, high-performing genetics from a reputational program. DNA tested through NeoGen with a score of 6.8, ranking high as Igenity Terminal Elite (top 25% for carcass and growth). GAP-4 certified (#18155, Exp. 7/11/23).**MACS Rep:** Bruce Shankle, 704-694-8686**Programs:****Flesh:** Medium**Frame:** Medium**Lot 2237 1 Load of STEERS**

Price: \$ _____ Buyer # _____

Mitchell Farms & Forrest Brothers

Saluda, SC - 45 miles west of Columbia, SC

Home-Raised, GAP-4, Verified Natural, Backgrounded, Weaned, BQA Cert.

Base Weight: 700 lbs. **Wt. Stop:** 735 lbs. **Variance:** 150 lbs.**Pickup Date:** August 15-19 **Estimated Head Count** 69**Slide/Shrink:** 2% shrink and slide \$5/cwt topside only**Weigh:** Certified MACS ground scales at farm**Notice to load:** 48 hours **Weaned:** 60+ days**Colors:** 67 hd blk/bwf, 3 hd ch-x**Muscling:** 95% #1, 5% #1.5**Nutrition:** Bunk fed 7-8# ph/pd of 14% CPC feed with free choice mineral, pasture, and hay.**Vaccinations:** Vista Once (1x), Vista 5 (1x), Vision 7 w/somnus (2x)**Dewormer:** LongRange (1x), Eprinex (1x)**Implants:** None**Genetics:** Sired by Yon Angus and SimAngus bulls or 1 Ultrablack bull out of Angus-X, Ch-X, and Sim-X cows.**Natural Status:** GAP-4; AngusLink NeverEver3; NHTC; Source and Age; Seller Affidavit**Comments:** Broke to bunks and waters. Born last fall. EID tagged. A fancy set of steers that are GAP certified and AngusLink verified natural coming from two reputational programs that do a great job with their management programs. 53 steers from Mitchell Farms, 18 steers from Forrest Brothers.**MACS Rep:** David Landreth, 864-444-8214**Programs:****Flesh:** Medium**Frame:** Medium

Lot 2238 1 Load of STEERS

Price: \$ _____ Buyer # _____

Scotton Farms

Staley, NC - 20 miles southeast of Greensboro, NC

Backgrounded, Weaned**Base Weight:** 700 lbs. **Wt. Stop:** 740 lbs. **Variance:** 175 lbs.**Pickup Date:** August 9-11 **Estimated Head Count** 69**Slide/Shrink:** No shrink and slide \$6/cwt topside only**Weigh:** Hauled 15 miles to Alamance Cattlemen's barn, unloaded, sorted, weighed on MACS certified ground scales**Notice to load:** 72 hours **Weaned:** 200+ days**Colors:** 85% blk/bwf, 3-4 hd ch-x, 8 hd red/rwf**Muscling:** 90% #1, 10% #1.5**Nutrition:** Bunk fed 3-4# daily ground corn and cotton seed. Running on pasture since last fall. Free choice hay and Southern States FlyMag mineral.**Vaccinations:** Bovi-Shield Gold One Shot (1x), Vision 7 20/20 (1x)**Dewormer:** Safeguard (3x)**Implants:** Ralgro (1x)**Genetics:** Commercial Angus-based and crossbred.**Natural Status:** No**Comments:** Broke to bunks and waters. 80 head to sort a load from. Purchased from local sale barns last fall and turned out. Have primarily been on grass and hand fed daily. 7-8 hd with scurred horns. A good set of steers to go to grass or feed.**MACS Rep:** Catherine Edwards, 704-550-7920**Programs:**

zoetis

**Flesh:** Medium**Frame:** Medium**Lot 2239 0.5 Load of STEERS**

Price: \$ _____ Buyer # _____

D.A. Hill Farms (David Hill)

Ansonville, NC - 35 miles east of Charlotte, NC

Home-Raised, GAP-4, Natural, Backgrounded, Weaned**Base Weight:** 725 lbs. **Wt. Stop:** 760 lbs. **Variance:** 175 lbs.**Pickup Date:** August 4-12 **Estimated Head Count** 35**Slide/Shrink:** 2% shrink and slide \$5/cwt topside only**Weigh:** Weighed on the truck at the farm**Notice to load:** 48 hours **Weaned:** 60+ days**Colors:** 13 hd blk/bwf, 39 hd ch-x, 4 hd red/rwf**Muscling:** 95% #1, 5% #1.5**Nutrition:** Bunk fed 12# of 13% complete feed with free choice fescue & crabgrass pasture, hay, and minerals.**Vaccinations:** Vista Once (1x), Vista 5 (1x), Vision 7 w/somnus (1x), Vision 7 (1x)**Dewormer:** Ivermec, Safeguard**Implants:** None**Genetics:** Sired by Angus, Charolais, or Hereford bulls out of Angus-based crossbred cows. Angus bulls bred to colored cows; Char & Herf bulls bred to black cows.**Natural Status:** GAP-4; Verified Natural; NHTC; Source and Age; Seller Affidavit**Comments:** Broke to bunks and waters. Born last fall with complete records. Will be EID tagged if needed for verified natural. A high-performing set of larger framed cattle that will grow and finish well at the feedyard. One calf with a small flick of ear.**MACS Rep:** Bruce Shankle, 704-694-8686**Programs:**Natural
AFFIDAVITPrimeVAC
BY MERCK ANIMAL HEALTH**Flesh:** Medium**Frame:** 90% Medium, 10% Large

Lot 2240 1 Load of STEERS

Price: \$ _____ Buyer # _____

TRF Farms

Lawndale, NC - 20 miles north of Shelby, NC

Home-Raised, GAP-4, Verified Natural, Backgrounded, Weaned, BQA Cert.

Base Weight: 735 lbs. **Wt. Stop:** 770 lbs. **Variance:** 65 lbs.**Pickup Date:** August 8-9 **Estimated Head Count** 66**Slide/Shrink:** 2% shrink and slide \$6/cwt topside only**Weigh:** Hauled 15 miles, sorted, weighed on certified ground scales**Notice to load:** 48 hours **Weaned:** 45+ days**Colors:** 90% blk/bwf, 2% red/rwf, 8% ch-x**Flesh:** Medium**Muscling:** 95% #1, 5% #1.5**Frame:** Medium**Nutrition:** Bunk fed 7# ph/pd of 14% feed with free choice mineral, pasture, and hay.**Vaccinations:** Vista Once SQ (1x), Vista 5 (1x), Vision 7 (2x)**Dewormer:** Dectomax**Implants:** None**Genetics:** Predominantly Angus-based sired by Angus, Hereford, or SimAngus bulls. RWF are rednecked type cattle.**Natural Status:** GAP-4; IMI Verified Natural; NHTC; Source & Age; Seller Affidavit**Comments:** Broke to bunks and waters. A reputational set of calves born last fall and under very good management protocols for health, feed, and genetics. Calves are all 840 EID tagged and verified natural. An excellent set of calves. GAP-4 Certified and can transfer at no cost to buyer (#16570, Exp. 8/12/22). TRF Farms is a partnership of Thompson & Son, Royster Turkey Farm, & Fieldstone Farm.**MACS Rep:** Marcus Harward, 704-322-0840**Programs:****Lot 2241 1 Load of STEERS**

Price: \$ _____ Buyer # _____

Coastal Carolina Cattle Alliance

Kenansville, NC - 70 mi SE of Raleigh, NC; 4 mi E of I-40

Home-Raised, Backgrounded, Weaned, EID Tagged, BQA Certified

Base Weight: 750 lbs. **Wt. Stop:** 790 lbs. **Variance:** 200 lbs.**Pickup Date:** August 22-26 **Estimated Head Count** 65**Slide/Shrink:** 1% shrink and slide \$6/cwt topside only**Weigh:** Hauled 10-20 miles, sorted & weighed on certified ground scales**Notice to load:** 48-72 hours **Weaned:** 60+ days**Colors:** 96% blk/bwf, 4% red/rwf**Flesh:** Medium**Muscling:** 95% #1, 5% #1.5**Frame:** Medium**Nutrition:** Bunk fed a complete feed with free choice mineral, pasture, and hay.**Vaccinations:** Double Vaccinated on Zoetis or Merck VAC 45 programs. Modified live respiratory (2x), Pasteurella (1x), Blackleg (2x)**Dewormer:** Yes (2x)**Implants:** Mixed**Genetics:** Primarily Angus-based. Sired by Angus, SimAngus, or Hereford bulls (genetics include Yon, Gibbs, Myers, Knoll Crest, Springfield, etc.)**Natural Status:** No**Comments:** Broke to bunks and waters. Calves born last fall, have been 840 EID tagged and tagged with a CCCA visual tag. Reputational producers who have worked together to use similar management and vaccination programs. 7 producers on this load.**MACS Rep:** Jeff Martin, 910-379-9173**Programs:**

Lot 2242 1 Load of STEERS

Price: \$ _____ Buyer # _____

Bar D Farms (Joey Doyle)

Marion, SC - 20 miles east of Florence, SC

Home-Raised, GAP-4, Verified Natural, Backgrounded, Weaned**Base Weight: 775 lbs. Wt. Stop: 825 lbs. Variance: 150 lbs.****Pickup Date:** October 17-21 **Estimated Head Count** 63**Slide/Shrink:** 2% shrink and slide \$6/cwt topside only**Weigh:** Certified MACS ground scales at farm**Notice to load:** 48-72 hours **Weaned:** 60+ days**Colors:** 96% blk/bwf, 4% ch-x**Muscling:** 95% #1, 5% #1.5**Nutrition:** Bunk fed 8# of 14% TMR commodity feed with free choice mineral, pasture, and hay**Vaccinations:** Vista Once (1x), Vista 5 (1x), Cavalry 9 (2x)**Dewormer:** Safeguard (2x) **Implants:** None**Genetics:** Mainly sired by Angus bulls and out of Angus-x-Ultrablack cows. A couple Ultrablack bulls used on high % Angus cows. Carry 1/8 ear or less.**Natural Status:** GAP-4; IMI Verified Natural; NHTC; Source and Age; Seller Affidavit**Comments:** Broke to bunks and waters. Calves were born last fall. Reputational calves that carry good winter hair and good bone that can go anywhere. Will be EID tagged for verified natural. GAP certificate can transfer with cattle (#16990, Exp. 5/14/23).**MACS Rep:** Marcus Harward, 704-322-0840**Programs:****Flesh:** Medium**Frame:** Medium**Lot 2243 1 Load of STEERS**

Price: \$ _____ Buyer # _____

Hannah Cattle Company (Matt Hannah)

Advance, NC - 25 miles northeast of Statesville, NC

Backgrounded, Weaned, BQA Certified**Base Weight: 775 lbs. Wt. Stop: 810 lbs. Variance: 125 lbs.****Pickup Date:** August 8-12 **Estimated Head Count** 63**Slide/Shrink:** 2% shrink and slide \$6/cwt topside only**Weigh:** Hauled 15 miles, weighed on truck (TA exit 170, Mocksville)**Notice to load:** 48 hours **Weaned:** 60+ days**Colors:** 80% blk/bwf, 3 hd ch-x, 8-10 hd red/rwf**Muscling:** 90% #1, 10% #1.5**Nutrition:** Bunk fed 6-7 lbs. of 13% CPC commodity feed with free choice mineral, pasture, and hay.**Vaccinations:** PrimeVAC - Vista Once (1x), Vista 5 (1x), Nasalgen IP (1x), Cavalry 9 (2x)**Dewormer:** Safeguard (1x), Longrange (1x) **Implants:** Revalor G**Genetics:** Commercial Angus-based.**Natural Status:** No**Comments:** Broke to bunks and waters. 100 head to sort from. Put together as 5-6 weights from local producers, triple vaccinated, and backgrounded on pasture being fed just a little bit to keep them coming up.**MACS Rep:** Jimmy Dagenhart, 704-425-3587**Programs:****Flesh:** Medium**Frame:** Medium

Lot 2244 2 Loads of STEERS

Price: \$ _____ Buyer # _____

Overbridge Farms (John Long)

Newberry, SC - 50 miles southeast of Greenville, SC

Home-Raised, GAP-4, Verified Natural, Backgrounded, Weaned**Base Weight: 800 lbs. Wt. Stop: 835 lbs. Variance: 150 lbs.****Pickup Date:** September 6-9 **Estimated Head Count** 121**Slide/Shrink:** 2% shrink and slide \$5/cwt topside only**Weigh:** Certified MACS ground scales at farm**Notice to load:** 48 hours **Weaned:** 60+ days**Colors:** 90% blk/bwf, 10% ch-x**Flesh:** Medium**Muscling:** 95% #1, 5% #1.5**Frame:** Medium**Nutrition:** Bunk fed 25# TMR (corn silage, soybean meal, ground corn, oats, barley) with free choice mineral, pasture, and hay.**Vaccinations:** Vista Once (1x), Vista 5 (1x), Vision 7 w/somnus (1x), Vision 7 (1x)**Dewormer:** LongRange (1x), Safeguard (1x) **Implants:** None**Genetics:** 50-75% Angus. Sired by Yon Angus and SimAngus bulls or 1 Charolais bull out of Angus, Char-x, and Sim-X cows.**Natural Status:** GAP-4; IMI Verified Natural; NHTC; Source & Age; Seller Affidavit**Comments:** Broke to bunks and waters. Calves all born last fall. Reputational calves from a very good program that feed and perform well. IMI verified natural and GAP Level 4 - transfers at no cost to buyer (#15876, Exp. 12/3/22)**MACS Rep:** David Landreth, 864-444-8214**Programs:****Lot 2245 1 Load of STEERS**

Price: \$ _____ Buyer # _____

M & M Farms

Snow Camp, NC - 20 miles southeast of Greensboro, NC

Home-Raised, GAP-4, Verified Natural, NHTC, Backgrounded, Weaned**Base Weight: 800 lbs. Wt. Stop: 835 lbs. Variance: 200 lbs.****Pickup Date:** August 8-12 **Estimated Head Count** 61**Slide/Shrink:** 2% shrink and slide \$5/cwt topside only**Weigh:** Certified MACS ground scales at farm**Notice to load:** 48 hours **Weaned:** 60+ days**Colors:** 96% blk/bwf, 2-3 hd ch-x**Flesh:** Medium**Muscling:** 95% #1, 5% #1.5**Frame:** Medium**Nutrition:** Bunk fed 13% commodity feed with free choice mineral, pasture, and hay.**Vaccinations:** Vista Once (1x), Vista 5 (1x), Vision 7 (2x)**Dewormer:** Dectomax (2x) **Implants:** None**Genetics:** 65%+ Angus. Sired by high-performing Angus and SimAngus bulls out of Angus-X cows.**Natural Status:** GAP-4; BeefTraxx Verified Natural; NHTC; Source & Age; Seller Affidavit**Comments:** Broke to bunks and waters. A reputational set of fancy calves, all born last fall. 140 steers running together to sort two loads for (8 wts and 6 wts), would like to load the same day if possible. GAP certificate can transfer at no cost to buyer (#15749, Exp. 8/18/22). Will be EID tagged for Verified Natural if needed.**MACS Rep:** Marcus Harward, 704-322-0840**Programs:**

Lot 2246 1 Load of STEERS

Price: \$ _____ Buyer # _____

TRF Farms

Lawndale, NC - 20 miles north of Shelby, NC

Home-Raised, GAP-4, Verified Natural, Backgrounded, Weaned, BQA Cert.**Base Weight:** 825 lbs. **Wt. Stop:** 860 lbs. **Variance:** 185 lbs.**Pickup Date:** August 8-9**Estimated Head Count** 59**Slide/Shrink:** 2% shrink and slide \$5/cwt topside only**Weigh:** Hauled 15 miles, sorted, weighed on certified ground scales**Notice to load:** 48 hours**Weaned:** 45+ days**Colors:** 80% blk/bwf, 7% red/rwf, 13% ch-x**Flesh:** Medium**Muscling:** 95% #1, 5% #1.5**Frame:** Medium**Nutrition:** Bunk fed 7# ph/pd of 14% feed with free choice mineral, pasture, and hay.**Vaccinations:** Vista Once SQ (1x), Vista 5 (1x), Vision 7 (2x)**Dewormer:** Dectomax**Implants:** None**Genetics:** Predominantly Angus-based sired by Angus, Hereford, or SimAngus bulls. RWF are rednecked type cattle.**Natural Status:** GAP-4; IMI Verified Natural; NHTC; Source & Age; Seller Affidavit**Comments:** Broke to bunks and waters. A reputational set of calves born last fall and under very good management protocols for health, feed, and genetics. Calves are all 840 EID tagged and verified natural. An excellent set of calves. GAP-4 Certified and can transfer at no cost to buyer (#16570, Exp. 8/12/22). TRF Farms is a partnership of Thompson & Son, Royster Turkey Farm, & Fieldstone Farm.**MACS Rep:** Marcus Harward, 704-322-0840**Programs:****Lot 2247 1 Load of STEERS**

Price: \$ _____ Buyer # _____

Hiatt Farms

Biscoe, NC - 30 miles south of Asheboro, NC

Backgrounded, Weaned**Base Weight:** 825 lbs. **Wt. Stop:** 870 lbs. **Variance:** 150 lbs.**Pickup Date:** August 22-26**Estimated Head Count** 59**Slide/Shrink:** 1% shrink and slide \$5/cwt topside only**Weigh:** Hauled 15 miles, weighed on certified ground scales**Notice to load:** 72 hours**Weaned:** 150+ days**Colors:** 45 hd blk/bwf, 12 hd ch-x, 4 hd red**Flesh:** Medium/M-Light**Muscling:** 90% #1, 10% #1.5**Frame:** Medium**Nutrition:** Grazing pasture and fed range cubes to keep them coming up with 18% protein. Free choice mineral, pasture, hay.**Vaccinations:** Bovi-Shield Gold One Shot (1x), Bovi-Shield Gold 5 (1x), Inforce (1x), Vision 7 w/spur (2x)**Dewormer:** Dectomax**Implants:** None**Genetics:** Commercial Angus-based and crossbred.**Natural Status:** No**Comments:** Broke to bunks and waters but mainly just running on pasture, carying just a medium grass flesh. There are 4 head with 1/8 ear and 1 with 4 in. horns. A good load ready to go to feed.**MACS Rep:** Marcus Harward, 704-322-0840**Programs:**

Lot 2248 1 Load of STEERS

Price: \$ _____ Buyer # _____

D.A. Hill Farms (David Hill)

Ansonville, NC - 35 miles east of Charlotte, NC

Home-Raised, GAP-4, Natural, Backgrounded, Weaned**Base Weight: 850 lbs. Wt. Stop: 885 lbs. Variance: 150 lbs.****Pickup Date:** August 4-12**Estimated Head Count** 57**Slide/Shrink:** 2% shrink and slide \$5/cwt topside only**Weigh:** Weighed on the truck at the farm**Notice to load:** 48 hours**Weaned:** 60+ days**Colors:** 13 hd blk/bwf, 39 hd ch-x, 4 hd red/rwf**Flesh:** Medium**Muscling:** 95% #1, 5% #1.5**Frame:** 90% Medium, 10% Large**Nutrition:** Bunk fed 12# of 13% complete feed with free choice fescue & crabgrass pasture, hay, and minerals.**Vaccinations:** Vista Once (1x), Vista 5 (1x), Vision 7 w/somnus (1x), Vision 7 (1x)**Dewormer:** Ivermec, Safeguard**Implants:** None**Genetics:** Sired by Angus, Charolais, or Hereford bulls out of Angus-based crossbred cows. Angus bulls bred to colored cows; Char & Herf bulls bred to black cows.**Natural Status:** GAP-4; Verified Natural; NHTC; Source and Age; Seller Affidavit**Comments:** Broke to bunks and waters. Born last fall with complete records. Will be EID tagged if needed for verified natural. A high-performing set of larger framed cattle that will grow and finish well at the feedyard.**MACS Rep:** Bruce Shankle, 704-694-8686**Programs:***Natural*
AFFIDAVIT global animal
PARTNERSHIP NHTC USDA
AGE & SOURCE
VERIFIED**PrimeVAC**
BY MERCK ANIMAL HEALTH Merck Animal Health
The Merck That Counts

Watch and Bid online

DVAuction
Broadcasting Real-Time Auctions

To view the sale or bid online, visit www.DVAuction.com. Find the "Mid-Atlantic Cattle Sales (Richfield, NC)" sale and click on "Details." From this page you can view the catalog, videos, or log in to watch the sale. If you have an account, log in and view the sale. If you do not, you must create an account under the "Create New Account" tab in the upper left hand corner of the screen. You will need to confirm this account through your e-mail.

You DO NOT have to be approved for a buyer's number just to watch the sale but you will still need to create an account with DVAuction.

Lot 2249 0.7 Load of HEIFERS

Price: \$ _____ Buyer # _____

TRF Farms

Lawndale, NC - 20 miles north of Shelby, NC

Home-Raised, GAP-4, Verified Natural, Backgrounded, Weaned, BQA Cert.

Base Weight: 510 lbs. **Wt. Stop:** 545 lbs. **Variance:** 150 lbs.**Pickup Date:** August 12**Estimated Head Count** 67**Slide/Shrink:** 2% shrink and slide \$10/cwt topside only**Weigh:** Hauled 15 miles, sorted, weighed on certified ground scales**Notice to load:** 48 hours**Weaned:** 45+ days**Colors:** 90% blk/bwf, 9% red/rwf, 1% ch-x**Flesh:** Medium**Muscling:** 95% #1, 5% #1.5**Frame:** Medium**Nutrition:** Bunk fed 7# ph/pd of 14% feed with free choice mineral, pasture, and hay.**Vaccinations:** Vista Once SQ (1x), Vista 5 (1x), Vision 7 (2x)**Dewormer:** Dectomax**Implants:** None**Genetics:** Predominantly Angus-based sired by Angus, Hereford, or SimAngus bulls. RWF are rednecked type cattle.**Natural Status:** GAP-4; IMI Verified Natural; NHTC; SAV; Affidavit.**Heifers Open:** Guaranteed open, not palpated.**Comments:** Broke to bunks and waters. A reputational set of calves born last fall and under very good management protocols for health, feed, and genetics. Calves are all 840 EID tagged and verified natural. An excellent set of calves. GAP-4 Certified and can transfer at no cost to buyer (#16570, Exp. 8/12/22). TRF Farms is a partnership of Thompson & Son, Royster Turkey Farm, & Fieldstone Farm.**MACS Rep:** Marcus Harward, 704-322-0840**Programs:****Lot 2250 1 Load of HEIFERS**

Price: \$ _____ Buyer # _____

TRF Farms

Lawndale, NC - 20 miles north of Shelby, NC

Home-Raised, GAP-4, Verified Natural, Backgrounded, Weaned, BQA Cert.

Base Weight: 610 lbs. **Wt. Stop:** 645 lbs. **Variance:** 85 lbs.**Pickup Date:** August 9-11**Estimated Head Count** 80**Slide/Shrink:** 2% shrink and slide \$8/cwt topside only**Weigh:** Hauled 15 miles, sorted, weighed on certified ground scales**Notice to load:** 48 hours**Weaned:** 45+ days**Colors:** 90% blk/bwf, 5% red/rwf, 5% ch-x**Flesh:** Medium**Muscling:** 95% #1, 5% #1.5**Frame:** Medium**Nutrition:** Bunk fed 7# ph/pd of 14% feed with free choice mineral, pasture, and hay.**Vaccinations:** Vista Once SQ (1x), Vista 5 (1x), Vision 7 (2x)**Dewormer:** Dectomax**Implants:** None**Genetics:** Predominantly Angus-based sired by Angus, Hereford, or SimAngus bulls. RWF are rednecked type cattle.**Natural Status:** GAP-4; IMI Verified Natural; NHTC; SAV; Affidavit.**Heifers Open:** Guaranteed open, not palpated.**Comments:** Broke to bunks and waters. A reputational set of calves born last fall and under very good management protocols for health, feed, and genetics. Calves are all 840 EID tagged and verified natural. An excellent set of calves. GAP-4 Certified and can transfer at no cost to buyer (#16570, Exp. 8/12/22). TRF Farms is a partnership of Thompson & Son, Royster Turkey Farm, & Fieldstone Farm.**MACS Rep:** Marcus Harward, 704-322-0840**Programs:**

Lot 2251 1 Load of HEIFERS

Price: \$ _____ Buyer # _____

Coastal Carolina Cattle Alliance

Kenansville, NC - 70 mi SE of Raleigh, NC; 4 mi E of I-40

Home-Raised, Backgrounded, Weaned, EID Tagged, BQA Certified

Base Weight: 615 lbs. **Wt. Stop:** 655 lbs. **Variance:** 200 lbs.**Pickup Date:** August 22-26 **Estimated Head Count** 79**Slide/Shrink:** 1% shrink and slide \$8/cwt topside only**Weigh:** Hauled 10-20 miles, sorted & weighed on certified ground scales**Notice to load:** 48-72 hours **Weaned:** 60+ days**Colors:** 94% blk/bwf, 6% red/rwf**Muscling:** 95% #1, 5% #1.5**Nutrition:** Bunk fed a complete feed with free choice mineral, pasture, and hay.**Vaccinations:** Double Vaccinated on Zoetis or Merck VAC 45 programs. Modified live respiratory (2x), Pasteurella (1x), Blackleg (2x)**Dewormer:** Yes (2x)**Implants:** Mixed**Genetics:** Primarily Angus-based. Sired by Angus, SimAngus, or Hereford bulls (genetics include Yon, Gibbs, Myers, Knoll Crest, Springfield, etc.)**Natural Status:** No **Heifers Open:** Guaranteed open, not palpated**Comments:** Broke to bunks and waters. Calves born last fall, have been 840 EID tagged and tagged with a CCCA visual tag. Reputational producers who have worked together to use similar management and vaccination programs. 6 producers on this load.**MACS Rep:** Jeff Martin, 910-379-9173**Programs:****Flesh:** Medium**Frame:** Medium**Lot 2252 1 Load of HEIFERS**

Price: \$ _____ Buyer # _____

Mitchell, Forrest Brothers, & Buzhardt 5 Farm

Saluda, SC - 45 miles west of Columbia, SC

Home-Raised, GAP-4, Verified Natural, Backgrounded, Weaned, BQA Cert.

Base Weight: 650 lbs. **Wt. Stop:** 685 lbs. **Variance:** 175 lbs.**Pickup Date:** August 22-26 **Estimated Head Count** 75**Slide/Shrink:** 2% shrink and slide \$5/cwt topside only**Weigh:** Certified MACS ground scales at farm**Notice to load:** 48 hours **Weaned:** 60+ days**Colors:** 71 hd blk/bwf, 3 hd ch-x**Muscling:** 95% #1, 5% #1.5**Nutrition:** Bunk fed 7-8# ph/pd of 14% CPC feed with free choice mineral, pasture, and hay.**Vaccinations:** Vista Once (1x), Vista 5 (1x), Vision 7 w/somnus (2x)**Dewormer:** Eprinex (2x)**Implants:** None**Genetics:** Sired by Yon Angus and SimAngus bulls or 1 Ultrablack bull out of Angus-X, Ch-X, and Sim-X cows.**Natural Status:** GAP-4; AngusLink NeverEver3; NHTC; SAV; Affidavit **Heifers Open:** Guaranteed open, not palpated.**Comments:** Broke to bunks and waters. Born last fall. EID tagged. A fancy set of heifers that are GAP certified and AngusLink verified natural coming from 3 reputational programs that do a great job with their management programs. 45 hrs from Mitchell Farms, 19 hrs from Forrest Brothers, 10 hrs from Buzhardt.**MACS Rep:** David Landreth, 864-444-8214**Programs:****Flesh:** Medium**Frame:** Medium

Lot 2253 1 Load of HEIFERS

Price: \$ _____ Buyer # _____

Patrick County Cattlemen

Patrick County, VA - 30 miles northeast of Mt Airy, NC

Home-Raised, Backgrounded, Weaned, BQA Certified, VQA Purple Tagged**Base Weight: 650 lbs. Wt. Stop: 700 lbs. Variance: 150 lbs.****Pickup Date:** August 4-5 **Estimated Head Count** 75**Slide/Shrink:** No shrink and \$6/cwt topside slide, \$4/cwt down**Weigh:** Hauled 10-20 miles, weighed on certified ground scales**Notice to load:** 48 hours **Weaned:** 60+ days**Colors:** 85% blk/bwf, 15% ch-x**Muscling:** 90% #1, 10% #1.5**Nutrition:** Bunk fed 5-8# commodity pellets with free choice mineral, pasture, and hay.**Vaccinations:** Bovi-Shield Gold One Shot (1x), Bovi-Shield Gold 5 (1x), 7-way Clostridial (2x)**Dewormer:** Cydectin, Ivermectin Pour-On **Implants:** Yes**Genetics:** Primarily sired by Angus bulls or a few Charolais bulls out of Angus-based commercial cows.**Natural Status:** No **Heifers Open:** Guaranteed open, not palpated**Comments:** Broke to bunks and waters. A fancy set of heifers coming from 6 producers in the Patrick County Cattlemen's group. These heifers have been similarly backgrounded and weaned for 60+ days. Calves are tagged with the purple VQA program tags. There could be 2-3 with a blue eye. An excellent set of heifers that we would like to go out this week.**MACS Rep:** Mark Bray, 276-952-5630**Programs:****Flesh:** Medium**Frame:** 90% Med, 10% Large**Lot 2254 1 Load of HEIFERS**

Price: \$ _____ Buyer # _____

M & M Farms

Snow Camp, NC - 20 miles southeast of Greensboro, NC

Home-Raised, GAP-4, Verified Natural, NHTC, Backgrounded, Weaned**Base Weight: 660 lbs. Wt. Stop: 695 lbs. Variance: 200 lbs.****Pickup Date:** August 8-12 **Estimated Head Count** 73**Slide/Shrink:** 2% shrink and slide \$7/cwt topside only**Weigh:** Certified MACS ground scales at farm**Notice to load:** 48 hours **Weaned:** 60+ days**Colors:** 96% blk/bwf, 2-3 hd ch-x**Muscling:** 95% #1, 5% #1.5**Nutrition:** Bunk fed 13% commodity feed with free choice mineral, pasture, and hay.**Vaccinations:** Vista Once (1x), Vista 5 (1x), Vision 7 (2x)**Dewormer:** Dectomax (2x) **Implants:** None**Genetics:** 65%+ Angus. Sired by high-performing Angus and SimAngus bulls out of Angus-X cows.**Natural Status:** GAP-4; BeefTraxx Verified Natural; NHTC; SAV; Affidavit. **Heifers Open:** Guaranteed open, not palpated.**Comments:** Broke to bunks and waters. A reputational set of fancy calves, all born last fall. 100 heifers running together to sort one load out of. GAP certificate can transfer at no cost to buyer (#15749, Exp. 8/18/22). Will be EID tagged for Verified Natural if needed.**MACS Rep:** Marcus Harward, 704-322-0840**Programs:****Flesh:** Medium**Frame:** Medium

Lot 2255 1 Load of HEIFERS

Price: \$ _____ Buyer # _____

Mountain View Farms (Neal Grant)

Candor, NC - 35 miles south of Asheboro, NC

Backgrounded, Weaned, Guaranteed Open**Base Weight:** 675 lbs. **Wt. Stop:** 710 lbs. **Variance:** 175 lbs.**Pickup Date:** August 8-19 **Estimated Head Count** 72**Slide/Shrink:** No shrink and slide \$7/cwt topside only**Weigh:** Hauled 10 miles, sorted, weighed on certified ground scales**Notice to load:** 72 hours **Weaned:** 120+ days**Colors:** 100% blk/bwf**Flesh:** Medium**Muscling:** 90% #1, 10% #1.5**Frame:** Medium**Nutrition:** Bunk fed 2-3x per week 3# of commodity feed and mainly grazing pasture.**Vaccinations:** Inforce 3 (1x), Vision 7 20/20 (1x)**Dewormer:** Dectomax**Implants:** None**Genetics:** Commercial Angus-based.**Natural Status:** No**Heifers Open:** Guaranteed open, given lutalyse, have not been palpated.**Comments:** Broke to bunks and waters. A good set of heifers that were purchased in early Spring, vaccinated, and then turned out on pasture. Calves have not been pushed hard on feed and carry a medium grass flesh. Will work well to go to grass or feed. Heifers given lutalyse but can be palpated the day before load out if buyer requests and gives enough notice.**MACS Rep:** Marcus Harward, 704-322-0840**Programs:****Lot 2256 1 Load of HEIFERS**

Price: \$ _____ Buyer # _____

TRF Farms

Lawndale, NC - 20 miles north of Shelby, NC

Home-Raised, GAP-4, Verified Natural, Backgrounded, Weaned, BQA Cert.**Base Weight:** 690 lbs. **Wt. Stop:** 725 lbs. **Variance:** 175 lbs.**Pickup Date:** August 9-11 **Estimated Head Count** 70**Slide/Shrink:** 2% shrink and slide \$6/cwt topside only**Weigh:** Hauled 15 miles, sorted, weighed on certified ground scales**Notice to load:** 48 hours **Weaned:** 45+ days**Colors:** 85% blk/bwf, 8% red/rwf, 7% ch-x**Flesh:** Medium**Muscling:** 95% #1, 5% #1.5**Frame:** Medium**Nutrition:** Bunk fed 7# ph/pd of 14% feed with free choice mineral, pasture, and hay.**Vaccinations:** Vista Once SQ (1x), Vista 5 (1x), Vision 7 (2x)**Dewormer:** Dectomax**Implants:** None**Genetics:** Predominantly Angus-based sired by Angus, Hereford, or SimAngus bulls. RWF are rednecked type cattle.**Natural Status:** GAP-4; IMI Verified Natural; NHTC; SAV; Affidavit.**Heifers Open:** Guaranteed open, not palpated.**Comments:** Broke to bunks and waters. A reputational set of calves born last fall and under very good management protocols for health, feed, and genetics. Calves are all 840 EID tagged and verified natural. An excellent set of calves. GAP-4 Certified and can transfer at no cost to buyer (#16570, Exp. 8/12/22). TRF Farms is a partnership of Thompson & Son, Royster Turkey Farm, & Fieldstone Farm.**MACS Rep:** Marcus Harward, 704-322-0840**Programs:**

Lot 2257 1 Load of HEIFERS

Price: \$ _____ Buyer # _____

Overbridge Farms (John Long)

Newberry, SC - 50 miles southeast of Greenville, SC

Home-Raised, GAP-4, Verified Natural, Backgrounded, Weaned**Base Weight: 715 lbs. Wt. Stop: 750 lbs. Variance: 150 lbs.****Pickup Date:** September 6-9 **Estimated Head Count** 68**Slide/Shrink:** 2% shrink and slide \$6/cwt topside only**Weigh:** Certified MACS ground scales at farm**Notice to load:** 48 hours **Weaned:** 60+ days**Colors:** 62 hd blk/bwf, 18 hd ch-x**Muscling:** 95% #1, 5% #1.5**Nutrition:** Bunk fed 25# TMR (corn silage, soybean meal, ground corn, oats, barley) with free choice mineral, pasture, and hay.**Vaccinations:** Vista Once (1x), Vista 5 (1x), Vision 7 w/somnus (1x), Vision 7 (1x)**Dewormer:** LongRange (1x), Safeguard (1x) **Implants:** None**Genetics:** 50-75% Angus. Sired by Yon Angus and SimAngus bulls or 1 Charolais bull out of Angus, Char-x, and Sim-X cows.**Natural Status:** GAP-4; IMI Verified Natural; NHTC; SAV; Affidavit **Heifers Open:** Guaranteed open, not palpated.**Comments:** Broke to bunks and waters. Calves all born last fall. Reputational calves from a very good program that feed and perform well. IMI verified natural and GAP Level 4 - transfers at no cost to buyer (#15876, Exp. 12/3/22)**MACS Rep:** David Landreth, 864-444-8214**Programs:****Flesh:** Medium**Frame:** Medium**Lot 2258 0.9 Load of HEIFERS**

Price: \$ _____ Buyer # _____

D.A. Hill Farms (David Hill)

Ansonville, NC - 35 miles east of Charlotte, NC

Home-Raised, GAP-4, Natural, Backgrounded, Weaned**Base Weight: 750 lbs. Wt. Stop: 785 lbs. Variance: 200 lbs.****Pickup Date:** August 22-29 **Estimated Head Count** 60**Slide/Shrink:** 2% shrink and slide \$6/cwt topside only**Weigh:** Weighed on the truck at the farm**Notice to load:** 48 hours **Weaned:** 60+ days**Colors:** 33 hd blk/bwf, 16 hd ch-x, 11 hd red/rwf**Muscling:** 90% #1, 10% #1.5**Nutrition:** Bunk fed 12# of 13% complete feed with free choice fescue & crabgrass pasture, hay, and minerals.**Vaccinations:** Vista Once (1x), Vista 5 (1x), Vision 7 w/somnus (1x), Vision 7 (1x)**Dewormer:** Ivermec, Safeguard **Implants:** None**Genetics:** Sired by Angus, Charolais, or Hereford bulls out of Angus-based crossbred cows. Angus bulls bred to colored cows; Char & Herf bulls bred to black cows.**Natural Status:** GAP-4; Verified Natural; NHTC; SAV; Affidavit **Heifers Open:** Guaranteed open, not palpated.**Comments:** Broke to bunks and waters. Born last fall with complete records. Will be EID tagged if needed for verified natural. A high-performing set of larger framed cattle that will grow and finish well at the feedyard.**MACS Rep:** Bruce Shankle, 704-694-8686**Programs:****Flesh:** Medium**Frame:** Medium

Lot 2259 1 Load of HEIFERS

Price: \$ _____ Buyer # _____

Ridgecrest Farms

Lawsonville, NC - 35 miles north of Winston-Salem, NC

Backgrounded, Weaned, Guaranteed Open**Base Weight: 765 lbs. Wt. Stop: 800 lbs. Variance: 125 lbs.****Pickup Date:** August 4-12 **Estimated Head Count** 63**Slide/Shrink:** 2% shrink and slide \$6/cwt topside only**Weigh:** Certified ground scales at farm**Notice to load:** 48 hours **Weaned:** 90+ days**Colors:** 92% blk/bwf, 8% ch-x or red**Muscling:** 95% #1, 5% #1.5**Nutrition:** Bunk fed TMR (chopped hay, soyhulls, and corn gluten) with free choice mineral, pasture, and hay.**Vaccinations:** Bovi-Shield Gold One Shot (1x), Vista Once SQ (1x), Inforce 3 (1x), Vision 7 (2x)**Dewormer:** Ivermectin, Safeguard**Implants:** None**Genetics:** Commercial Angus-based.**Natural Status:** No**Heifers Open:** Vet palpated, guaranteed open.**Comments:** Broke to bunks and waters. Purchased, double vaccinated, and running together for 60-90+ days. 3-5 may have a blue eye. Running out on a 30 acre pasture.**MACS Rep:** Mark Bray, 276-952-5630**Programs:****Flesh:** Medium**Frame:** Medium**Lot 2260 1 Load of STRS/HFRS**

Price: \$ _____ Buyer # _____

Cox Cattle Company

Kenansville, NC - 70 mi SE of Raleigh, NC; 4 mi E of I-40

Home-Raised, Affidavit Natural, Backgrounded, Weaned, BQA Certified**~44 Steers Wt: 660 lbs. Wt. Stop: 695 lbs. Variance: 200 lbs.****~31 Hfrs Wt: 660 lbs. Wt. Stop: 695 lbs. Variance: 200 lbs.****Heifers sell \$12/cwt back****Pickup Date:** August 12-17**Slide/Shrink:** No shrink and slide \$7/cwt topside only**Weigh:** Hauled 25 miles, sorted, weighed on the ground on certified scales**Notice:** 48-72 hours **Weaned:** 60+ days**Colors:** 98% blk/bwf, 1 hd red**Muscling:** 90% #1, 10% #1.5**Nutrition:** Bunk fed 13% commodity feed and grazing pasture with free choice mineral and hay.**Vaccinations:** Vista Once (1x), Vista 5 (1x), Vision 7 (2x)**Dewormer:** Dectomax Injectable**Implants:** None**Genetics:** Angus-based. Mainly sired by Angus and SimAngus bulls out of Angus-X-Sim cows.**Natural Status:** Seller Affidavit**Heifers Open:** Guaranteed open, not palpated.**Comments:** Broke to bunks and waters. A very good set of calves that have been weaned for 60+ days, double vaccinated, and meet all-natural standards. Primarily black, just 1 red heifer. Will haul to the Kenansville Livestock Facility to load. Will sign buyer's natural affidavits as needed.**MACS Rep:** Jeff Martin, 910-379-9173**Programs:****Flesh:** Medium**Frame:** Medium

Lot 2261 1 Load of STRS/HFRS

Price: \$ _____ Buyer # _____

Westlake Farms LLC

Saluda, SC - 45 miles west of Columbia, SC

Home-Raised, GAP-4, Verified Natural, Backgrounded, Weaned, BQA Cert.

~66 Steers Wt: 720 lbs. Wt. Stop: 755 lbs. Variance: 150 lbs.

~13 Hfrs Wt: 620 lbs. Wt. Stop: 655 lbs. Variance: 150 lbs.

Heifers sell \$8/cwt back

Pickup Date: August 15-19

Slide/Shrink: 2% shrink and slide \$5/cwt topside only

Weigh: Certified MACS ground scales at farm

Notice: 48-72 hours Weaned: 60+ days

Colors: 100% blk/bwf

Muscling: 95% #1, 5% #1.5

Nutrition: Bunk fed 15-20# TMR of baleage, corn glute, soyhulls with free choice Purina mineral, pasture, and hay.

Vaccinations: Pyramid 5 + Presponse (1x), Triangle 10 (2x), Vision 7 w/somnus (2x)

Dewormer: Safeguard (3x), Cydectin (1x) Implants: None

Genetics: 75% or more Angus - Sired by Yon Angus bulls out of Angus-based cows with a small % Simmental. Angus Verified sires - Genetic Merit Scores also qualify for CAB Targeting the Brand.

Natural Status: GAP-4; AngusLink NeverEver3; NHTC; SAV; Affidavit Heifers Open: Guaranteed open, not palpated

Comments: Broke to bunks and waters. Born last fall. EID tagged. A very fancy set of calves that are GAP certified and AngusLink verified natural. Calves have fed out and graded very well in the past. Primarily steers and finished out with a few heifers. Calves are also certified for AL Calf Management and have excellent Genetic Merit scores.

MACS Rep: David Landreth, 864-444-8214



Flesh: Medium

Frame: Medium

Programs:

**Lot 2262 1 Load of STRS/HFRS**

Price: \$ _____ Buyer # _____

S&K Farms (Terry Kirkland)

Batesburg, SC - 40 miles west of Columbia, SC

Home-Raised, GAP-4, Verified Natural, Backgrounded, Weaned, BQA Cert.

~40 Steers Wt: 725 lbs. Wt. Stop: 760 lbs. Variance: 150 lbs.

~30 Hfrs Wt: 650 lbs. Wt. Stop: 685 lbs. Variance: 150 lbs.

Heifers sell \$8/cwt back

Pickup Date: August 15-19

Slide/Shrink: 2% shrink and slide \$5/cwt topside only

Weigh: Certified MACS ground scales at farm

Notice: 48-72 hours Weaned: 60+ days

Colors: 100% blk/bwf

Muscling: 95% #1, 5% #1.5

Nutrition: Bunk fed Performance High Energy Plus 14 feed with free choice Purina mineral, pasture, and hay.

Vaccinations: Vista Once (1x), Vista 5 (1x), Vision 7 w/somnus (2x)

Dewormer: Cydectin Implants: None

Genetics: 75% or more Angus - Sired by Yon Angus bulls out of Angus-based cows. Angus Verified sires - Genetic Merit Scores also qualify for CAB Targeting the Brand.

Natural Status: GAP-4; AngusLink NeverEver3; NHTC; SAV; Affidavit Heifers Open: Guaranteed open, not palpated

Comments: Broke to bunks and waters. Born last fall. EID tagged. A fancy set of calves that are GAP certified and AngusLink verified natural. Born Aug- Oct 2021 with excellent genetic merit scores and Yon genetics. GAP certificate can transfer at no cost to buyer.

MACS Rep: David Landreth, 864-444-8214



Flesh: Medium

Frame: Medium

Programs:



Lot 2263 1 Load of STRS/HFRS

Price: \$ _____ Buyer # _____

Wesley Knight Farms

Waterloo, SC - 20 miles south of Greenville, SC

Home-Raised, GAP-4, Verified Natural, Backgrounded, Weaned, BQA Cert.

~46 Steers Wt: 725 lbs. Wt. Stop: 760 lbs. Variance: 175 lbs.

~22 Hfrs Wt: 680 lbs. Wt. Stop: 715 lbs. Variance: 175 lbs.

Heifers sell \$8/cwt back

Pickup Date: August 8-12

Slide/Shrink: No shrink and slide \$5/cwt topside only

Weigh: Hauled 30 miles, weighed on certified MACS ground scales

Notice: 48 hours **Weaned: 60+ days**

Colors: 66 hd blk/bwf, 1 hd ch-x

Muscling: 95% #1, 5% #1.5

Nutrition: Bunk fed 6-7# ph/pd of 13% CPC Grower with free choice Purina mineral, pasture, and hay

Vaccinations: Vista Once SQ (2x), ViraShield 6 (1x), Vision 7 w/somnus (2x)

Dewormer: Eprinex (2x)

Implants: None**Genetics:** 50-75% Angus - Sired by Yon Angus bulls out of high % Angus cows. High marb & \$B. Angus Verified sires - Genetic Merit Scores also qualify for CAB Targeting the Brand.**Natural Status:** GAP-4; AngusLink NeverEver3; NHTC; SAV; Affidavit **Heifers Open:** Guaranteed open, not palpated**Comments:** Broke to bunks and waters. Born last fall. EID tagged. A docile, fancy set of calves that are GAP certified and AngusLink verified natural. Born Sep-Nov 2021 with excellent genetic merit scores and Yon genetics. GAP certificate can transfer at no cost to buyer.**MACS Rep:** David Landreth, 864-444-8214**Flesh: Medium****Frame: Medium****Programs:**Natural
AFFIDAVITglobal animal
PARTNERSHIPANGUS LINK
VALUE ADDED PROGRAMS

NHTC

USDA
AMERICAN
COWBOYYON
FAMILY FARMSPrimeVAC
BY MERCK ANIMAL HEALTH**Lot 2264 1 Load of STRS/HFRS**

Price: \$ _____ Buyer # _____

Bruce Rushton

Saluda, SC - 45 miles west of Columbia, SC

Home-Raised, GAP-4, Verified Natural, Backgrounded, Weaned, BQA Cert.

~60 Steers Wt: 730 lbs. Wt. Stop: 765 lbs. Variance: 175 lbs.

~9 Hfrs Wt: 625 lbs. Wt. Stop: 660 lbs. Variance: 175 lbs.

Heifers sell \$8/cwt back

Pickup Date: August 8-12

Slide/Shrink: 2% shrink and slide \$5/cwt topside only

Weigh: Certified MACS ground scales at farm

Notice: 48-72 hours **Weaned: 60+ days**

Colors: 100% blk/bwf

Muscling: 95% #1, 5% #1.5

Nutrition: Bunk fed 5-6# ph/pd of 16% Newberry Feed with ryegrass baleage, free choice Purina mineral, pasture, and hay.

Vaccinations: Vista Once (1x), Vista 5 (1x), Vision 7 w/somnus (2x)

Dewormer: LongRange (1x)

Implants: None**Genetics:** 50-75% Angus - Sired by Yon Angus bulls out of high % Angus cows. Angus Verified sires - Genetic Merit Scores also qualify for CAB Targeting the Brand.**Natural Status:** GAP-4; AngusLink NeverEver3; NHTC; SAV; Affidavit **Heifers Open:** Guaranteed open, not palpated**Comments:** Broke to bunks and waters. Born last fall. EID tagged. A fancy set of calves that are GAP certified and AngusLink verified natural. Another load with very good genetic merit scores and Yon genetics. GAP certificate can transfer at no cost to buyer.**MACS Rep:** David Landreth, 864-444-8214**Flesh: Medium****Frame: Medium****Programs:**Natural
AFFIDAVITglobal animal
PARTNERSHIPANGUS LINK
VALUE ADDED PROGRAMS

NHTC

USDA
AMERICAN
COWBOYYON
FAMILY FARMSPrimeVAC
BY MERCK ANIMAL HEALTH

Lot 2265 1 Load of STRS/HFRS

Price: \$ _____ Buyer # _____

Buzhardt 5 Farms

Saluda, SC - 45 miles west of Columbia, SC

Home-Raised, GAP-4, Verified Natural, Backgrounded, Weaned, BQA Cert.

~35 Steers Wt: 760 lbs. Wt. Stop: 795 lbs. Variance: 175 lbs.

~29 Hfrs Wt: 740 lbs. Wt. Stop: 775 lbs. Variance: 175 lbs.

Heifers sell \$8/cwt back

Pickup Date: August 8-12

Slide/Shrink: 2% shrink and slide \$5/cwt topside only

Weigh: Certified MACS ground scales at farm

Notice: 48-72 hours **Weaned: 60+ days**

Colors: 61 hd blk/bwf, 3 hd ch-x

Muscling: 95% #1, 5% #1.5

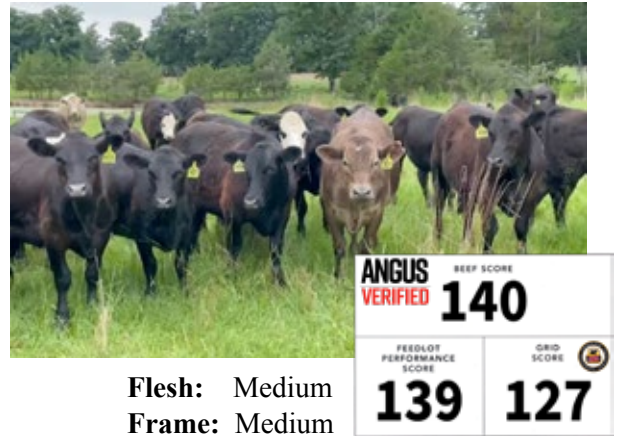
Nutrition: Bunk fed 7-8# ph/pd of 14% CPC feed with free choice Purina mineral, pasture, and hay.

Vaccinations: Vista Once (1x), Vista 5 (1x), Vision 7 w/somnus (2x)

Dewormer: LongRange (1x), Eprinex (1x) **Implants: None**Genetics: 50-75% Angus - Sired by Yon Angus bulls out of Angus or Char-X cows. Angus Verified sires - Genetic Merit
Scores also qualify for CAB Targeting the Brand.Natural Status: GAP-4; AngusLink NeverEver3; NHTC; SAV; Affidavit **Heifers Open: Guaranteed open, not palpated**

Comments: Broke to bunks and waters. Born last fall. EID tagged. A fancy set of calves that are GAP certified and AngusLink verified natural. Another load with very good genetic merit scores and Yon genetics. GAP certificate can transfer at no cost to buyer.

MACS Rep: David Landreth, 864-444-8214

**Flesh: Medium****Frame: Medium**

Programs:

**Lot 2266 1 Load of STRS/HFRS**

Price: \$ _____ Buyer # _____

Adams Farms (Derek Adams)

Mt Carmel, SC - 45 miles northwest of Augusta, GA

Home-Raised, Backgrounded, Weaned, BQA Certified

~52 Steers Wt: 760 lbs. Wt. Stop: 795 lbs. Variance: 175 lbs.

~15 Hfrs Wt: 680 lbs. Wt. Stop: 715 lbs. Variance: 175 lbs.

Heifers sell \$10/cwt back

Pickup Date: August 8-12

Slide/Shrink: 2% shrink and slide \$5/cwt topside only

Weigh: Certified MACS ground scales at farm

Notice: 48 hours **Weaned: 60+ days**

Colors: 66 hd blk/bwf, 1 hd ch-x

Muscling: 95% #1, 5% #1.5

Nutrition: Bunk fed 7-8# ph/pd of 14% CPC feed with free choice CPC mineral, pasture, and hay.

Vaccinations: Pyramid 5 + Presponse (1x), Pyramid 5 (1x), Cavalry 9 (2x)

Dewormer: Cydectin (1x) **Implants: Ralgro (1x)**

Genetics: Sired by Angus or Hereford bulls out of Angus-X, Ch-X, and Herf-X cows. 2/3 are 75% or more Angus, 1/3 sired by Hereford bull.

Natural Status: No **Heifers Open: Guaranteed open, not palpated**

Comments: Broke to bunks and waters. Calves born last fall. Grazing millet and summer grasses on a rotational grazing system. Broke to a hot wire fence. A really nice set of backgrounded, weaned calves ready to go to feed.

MACS Rep: David Landreth, 864-444-8214

**Flesh: Medium****Frame: Medium**

Programs:



Lot 2267 1 Load of STRS/HFRS

Price: \$ _____ Buyer # _____

Hall Farm (Todd Hall)

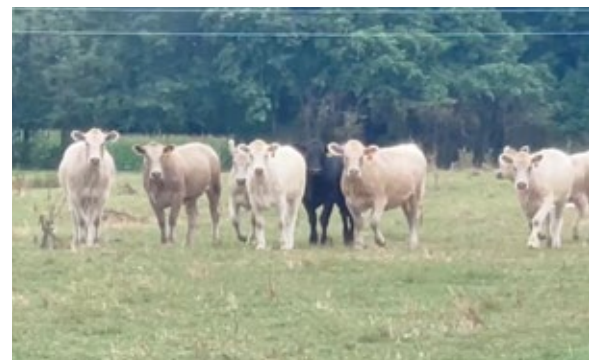
Prosperity, SC - 40 miles west of Columbia, SC

Home-Raised, GAP-4, Verified Natural, Backgrounded, Weaned, BQA Cert.**~36 Steers Wt: 825 lbs. Wt. Stop: 860 lbs. Variance: 175 lbs.****~29 Hfrs Wt: 715 lbs. Wt. Stop: 750 lbs. Variance: 175 lbs.****Heifers sell \$6/cwt back****Pickup Date:** August 10-17**Slide/Shrink:** 2% shrink and slide \$5/cwt topside only**Weigh:** Certified MACS ground scales at farm**Notice:** 48-72 hours **Weaned:** 60+ days**Colors:** 100% blk/bwf**Muscling:** 95% #1, 5% #1.5**Nutrition:** Bunk fed Performance High Energy Plus 14 feed with free choice Purina hi-mag mineral, pasture, and hay.**Vaccinations:** Vista Once (2x), Vision 7 w/somnus (2x)**Dewormer:** Cydectin (2x)**Implants:** None**Genetics:** 50-75% Angus - Sired by Yon Angus bulls or 1 SimAngus out of Angus-X cows.**Natural Status:** GAP-4; AngusLink NeverEver3; NHTC; SAV; Affidavit **Heifers Open:** Guaranteed open, not palpated**Comments:** Broke to bunks and waters. Born last fall. EID tagged. A fancy set of calves that are GAP certified and AngusLink verified natural. Another load with very good genetic merit scores and Yon genetics. GAP certificate can transfer at no cost to buyer. 1 head with small scurs.**MACS Rep:** David Landreth, 864-444-8214**Flesh:** Medium**Frame:** Medium**Programs:****Lot 2268 1 Load of STRS/HFRS**

Price: \$ _____ Buyer # _____

Bowman Farms (William Bowman)

Iva, SC - 45 miles southwest of Greenville, SC

Home-Raised, GAP-4, Verified Natural, Backgrounded, Weaned**~31 Steers Wt: 900 lbs. Wt. Stop: 950 lbs. Variance: 150 lbs.****~36 Hfrs Wt: 850 lbs. Wt. Stop: 900 lbs. Variance: 150 lbs.****Heifers sell \$8/cwt back****Pickup Date:** August 8-12**Slide/Shrink:** 2% shrink and slide \$5/cwt topside only**Weigh:** Hauled 20 miles, weighed on certified truck scales**Notice:** 48 hours **Weaned:** 90+ days**Colors:** 50% blk/bwf, 40% ch-x, 5% yellow, 5% red/rwf**Muscling:** 95% #1, 5% #1.5**Nutrition:** Bunk fed 5-6# ph/pd of 14% Floyd Farm feed with CPC mineral, pasture, and hay.**Vaccinations:** Pyramid 5 + Presponse (1x), Pyramid 5 (1x), Vision 7 (2x)**Dewormer:** Eprinex**Implants:** None**Genetics:** Sired by Angus, Charolais, or Red Angus sires (Yon, Bricton, Clemson) and out of Angus, Red Angus, & Char cows.**Natural Status:** GAP-4; BeefTraxx Verified Natural; NHTC; SAV; Affidavit **Heifers Open:** Guaranteed open, not palpated**Comments:** Broke to bunks and waters. A reputational set of calves with a lot of growth in them that will feed and finish well. GAP certificate can be transferred at no cost to buyer. Will be EID tagged as needed for Verified Natural.**MACS Rep:** David Landreth, 864-444-8214**Flesh:** Medium**Frame:** Medium**Programs:**

2022 GRADED FEEDER CALF SALES

UPCOMING SALE: AUGUST 4, 2022
Stanly County Livestock Market, Norwood, NC



- Access to premium for more intensive management (ie: calves that are vaccinated weaned, fed, etc.)
- Market feeder cattle in large uniform lots with other producers following the same guidelines.
- Smaller producers can come together to market large numbers of uniform cattle.
- Receive increased marketing and recognition for vaccinated & weaned calves
- Help to build the reputation of high-quality calves in the Carolinas!

SALE TYPE	SALE DATE	FIRST DAY TO VACCINATE	LAST DAY TO WEAN	LAST DAY TO VACCINATE
60 Day Wean	August 4	May 6	June 5	July 14
60 Day Wean	September 22	June 24	July 24	September 1
60 Day Wean	November 17* <small>*dependent on consignments</small>	August 19	September 18	October 27

CHANGES & UPDATES!

- Calves must be weaned at least **60** days
- Both rounds of required vaccinations must be given **21-90 days** prior to the sale.
- All sales are **WEANED** sales.
Check out the new MAC-Vac program for non-weaned cattle!
- Cattle must be consigned for every sale.
- Cattle must have a sale ear tag prior to coming to the sale.

STAY UPDATED ON SALES & CHANGES

Text: FEEDER to 8334150511
to join our list

Standard message and data rates may apply.
To unsubscribe, text STOP to 8334150511

QUESTIONS?

Marcus Harward 704-322-0840
Catherine Edwards 704-550-7920
Bruce Shankle 704-694-8686
Brooke Harward 704-322-9770

info@macsvideo.com

WWW.NORWOODFEEDERCALF.COM

MID-ATLANTIC CATTLE SALES

WWW.MACSVIDEO.COM



UPCOMING SALES

August 16, 2022

September 6, 2022 • September 20, 2022

October 4, 2022 • October 18, 2022

November 1, 2022 • November 15, 2022

December 6, 2022



Our motto - Working hard for you today and every day!



To view the sale or bid online, visit www.DVAuction.com. Find the "Mid-Atlantic Cattle Sales (Richfield, NC)" sale and click on "Details." From this page you can view the catalog, videos, or log in to watch the sale. If you have an account, log in and view the sale. If you do not, you must create an account under the "Create New Account" tab in the upper left hand corner of the screen. You will need to confirm this account through your e-mail.

You DO NOT have to be approved for a buyer's number just to watch the sale but you will still need to create an account with DVAuction.



Mid-Atlantic Cattle Sales, LLC
28978 Misenheimer Rd. Richfield, NC 28137
info@macsvideo.com • www.MACSVideo.com

**Bonded through USDA Packers & Stockyards*

MACS Sale Terms and Conditions

1. Each bidder must be pre-registered and have a Buyer Number to participate in the auction. To register for the auction call 704-322-9770 or register through DV Auction. By participating in the auction the Buyer expressly agrees to adhere to these Terms and Conditions and to the provisions set forth in the Livestock Purchase Agreement sent after the auction. All cattle being offered for sale are under standard Contracts for Sale. All cattle are purchased under standard Contracts for Purchase by the Buyers.
2. The cattle offered for sale are indicated on the sale sheets or online sale description as described to the MACS representatives by the owner. They are described by lot numbers, seller, location of cattle, numbers of head, estimated weight, management practices, delivery date, conditions of sale and delivery, and verified programs. Representatives for each load are listed under each respective lot. Every effort has been made to assure the correctness of this information but all announcements from the auctioneer or official auction staff prior to or during the sale shall take precedence over printed matter herein.
3. Auction bids will be taken as voice bids by telephone and in person or online bids through DV Auction. Bids are asked with each lot of cattle and will be sold to the highest bidder on the basis of estimated weight. Seller reserves the right to "no sale" the load lot(s) of his cattle at the time the highest bid is made as long as the "no sale" announcement is made prior to the next lot being sold. Any departure from this procedure will be announced and all announcements made from the auctioneer or official auction staff will take precedence over printed matter herein.
4. The Auctioneer reserves the right to reject any and all bids. Auctioneer will settle all disputed bids. If a dispute arises between two or more bidders, the Auctioneer may immediately put the lot up for sale again and resell to the highest bidder. The decision of the Auctioneer shall be final and absolute.
5. One full load of stocker or feeder cattle will be contracted for approximately 48,000 lbs. and the respective head count at the base weight at the full truckload weight. No freight adjustment will be given if the average weight at delivery is under the base weight and the head count delivered is within 95% of the contracted head count. Mid-Atlantic Cattle Sales and its representatives will act as agents only in the sale of lots of cattle. As the marketing agency we cannot guarantee a minimum or maximum amount of shrink on any load. Any weight guarantees in regards to shrink must be given by Seller. Mid-Atlantic Cattle Sales cannot guarantee off truck weights.
6. Cattle that are picked up after the stated delivery dates will be subject to a 2# per head per day increase on the base weight and any weight stops for each day late after the last stated delivery date.
7. Most loads have weight stops at 25-50 lbs. over the base weight. The individual weight stops are posted on each lot. All cattle will be sold on a sliding scale as listed on each load.
8. On split loads the heifer price will be \$___/cwt (as stated in the lot information) back of the original price of the steers.
9. The Buyer is responsible for all arrangements and regulatory requirements with respect to the transportation of the livestock and the Buyer is responsible for sending trucks to adequately load the number of head and/or the total weight contracted in order to legally transport them to their final destination. Cattle sold will be sorted and delivered to the stated weigh point by the Seller and weighed on a certified scale. Buyer will receive the cattle at point of weighing under conditions as stated with respect to each lot. Buyer will take ownership of the cattle at the point of loading.
10. Health entry requirements for the state of entry are the responsibility of the Buyer. The Seller will furnish any health certificates required for the state of origin and Federal Law at the request of the buyer. If additional health certificates, documentation or tests are required for shipment to the Buyer's destination, it shall be at the Buyer's request and expense.
11. Any heifer that is sold as guaranteed open and is determined to be bred by the buyer will receive a \$200 per bred heifer refund given appropriate documentation is provided within 60 days of the cattle being delivered. Documentation must include lot information, heifer identification, and veterinarian documentation.
12. Payment by Buyer is due and payable in accordance with USDA P&S prompt pay policy upon delivery of the cattle and at such times as the value of the cattle is determined based on weight (subject to condition), price (subject to condition), and any other conditions stated at time of sale. Payment must be sent to Mid-Atlantic Cattle Sales within 1 day after the cattle are received by the Buyer. We request that all payments be sent by Wire Transfer, ACH, or overnight delivery of a check via FedEx or UPS. Payment sent via the U.S. Postal Service (1st Class or Priority Mail) are expected to be received within 7 business days of delivery. Any fees incurred for sending payment will be at the Buyer's expense.
13. Mid-Atlantic Cattle Sales does not warrant the harvest date on source and age verified cattle and cannot guarantee back verification on any program requiring signed affidavits or 3rd party verification. Mid-Atlantic Cattle Sales will make all efforts to ensure verifications are met, but it is the Buyer's responsibility to verify all claims of the Seller to fit specific programs prior to purchase.
14. There are no implied warranties of merchantability or fitness for a particular purpose on any livestock sold. Seller does not warrant that the livestock are free from any latent defect, condition, sickness, or disease. Seller does not assume responsibility for any loss after the livestock are delivered, which results from any latent defect, condition, sickness, or disease.



Marcus Harward: 704-322-0840

Brooke Harward: 704-322-9770

Jeff Martin: 910-379-9173

info@macsvideo.com

www.MACSVideo.com

28978 Misenheimer Rd • Richfield, NC 28137