

# MID-ATLANTIC CATTLE SALES

*A family owned and operated livestock video auction  
with 30+ years of livestock marketing experience.*

---

**MAY 17, 2022**  
**TUESDAY AT 1:00 PM EDT**

**WWW.MACSVIDEO.COM**



**Mid-Atlantic Cattle Sales, LLC**  
28978 Misenheimer Rd. Richfield, NC 28137  
704-322-0840 • 704-322-9770  
info@macsvideo.com

**DVAuction**  
Broadcasting Real-Time Auctions

# Video Sale INFORMATION

The cattle offered for sale are indicated on the following sale sheets and the online sale description as described to the MACS representatives by the owner. They are described by lot numbers, seller, location of cattle, numbers of head, estimated weight, management practices, delivery date, conditions of sale and delivery, and verified programs. Representatives for each load are listed under each respective lot. Every effort has been made to assure the correctness of this information but all announcements from the auctioneer or official auction staff prior to or during the sale shall take precedence over printed matter herein.

## SALE DATE & TIME:

**Tuesday - May 17, 2022**

**1:00 pm edt. | 12:00 pm cdt.**

## CONTACT:

Marcus Harward .....704-322-0840

Brooke Harward .....704-322-9770

Jeff Martin .....910-379-9173

**[www.MACSvideo.com](http://www.MACSvideo.com)**

*View catalog, videos, and additional updates online.*

**[www.vimeo.com/macsvideo](http://www.vimeo.com/macsvideo)**

*All videos of sale cattle are posted directly on our video page listed above and on DV Auction*

**\*MACS Sale Terms and Conditions are listed in this catalog and online. All loads will sell under these terms and conditions.**

## Bidding Options

*We want to offer you the best opportunities we can to participate in our sales each month.  
Below are three options for bidding on the sale.*

### 1. CONFERENCE CALL

After 12:45 eastern on sale day, you can call the auction number to listen and bid on the sale. To bid during the sale, you will use your buyer number to bid on the lot. Contact Marcus or Brooke prior to the sale to receive a buyer's number. *Please keep background noise to a minimum as we will have multiple people on the line. To mute your phone, press \*6. To un-mute, press \*6 again.*

**CALL-IN NUMBER: 1-866-906-9888**

**PASSCODE: 9461720 #**

### 2. DV AUCTION - INTERNET VIEWING AND BIDDING



To view the sale or bid online, visit [www.DVAuction.com](http://www.DVAuction.com). Find the "Mid-Atlantic Cattle Sales (Richfield, NC)" sale and click on "Details." From this page you can view the catalog, videos, or log in to watch the sale. If you have an account, log in and view the sale. If you do not, you must create an account under the "Create New Account" tab in the upper left hand corner of the screen. You will need to confirm this account through your e-mail. *It is best to do this at least a day before the sale.*

**You DO NOT have to be approved just to watch the sale but you will still need to create an account with DVAuction. To register for a buyer's number, call Brooke at 704-322-9770 prior to the sale to be approved to bid online.**

### 3. ABSENTEE BIDDING

For people who can not view or bid on the sale at sale time, we have can handle closed bids in house and assist you with absentee bidding. Contact Marcus at 704-322-0840 for more information.

*"He is not here; he has risen! Remember how he told you, while he was still with you in Galilee: 'The Son of Man must be delivered over to the hands of sinners, be crucified and on the third day be raised again.'"*

**LUKE 24: 6-7**



# TABLE OF CONTENTS

## TUESDAY - MAY 17, 2022 - 1:00 PM EDT

Video Sale Information

Pg 2

Table of Contents

Pg 3

LOT NUMBER	LOAD NUMBER	TYPE	BASE WT.	PRODUCER	STATE	DELIVERY	PAGE NUMBER
Lot 2143	1 Load	Steers	725 lbs.	Rolling Hill Farm	NC	May	Pg 4
Lot 2144	1 Load	Steers	750 lbs.	HRW Farms *GAP VNB NHTC	NC	May	Pg 4
Lot 2145	1 Load	Steers	750 lbs.	Langley Farms	NC	June	Pg 5
Lot 2146	1 Load	Steers	775 lbs.	Falling Creek Cattle Co	NC	May	Pg 5
Lot 2147	1 Load	Steers	810 lbs.	Hemric Farms *GAP VNB NHTC	NC	May	Pg 6
Lot 2148	1 Load	Steers	825 lbs.	Frank Howey Farms *GAP VNB NHTC	NC	May	Pg 6
Lot 2149	1 Load	Steers	825 lbs.	B&D Farms *GAP VNB NHTC	SC	May	Pg 7
Lot 2150	1 Load	Steers	825 lbs.	Stephenson Farm *	SC	May	Pg 7
Lot 2151	1 Load	Steers	825 lbs.	Langley Farms	NC	June	Pg 8
Lot 2152	1 Load	Steers	875 lbs.	Donald Chriscoe Farm *	NC	May	Pg 8
Lot 2153	0.6 Load	Heifers	625 lbs.	Cooke Cattle	NC	May	Pg 9
Lot 2154	1 Load	Heifers	690 lbs.	Dixon Family Farms & Holt Farms	NC	May	Pg 9
Lot 2155	1 Load	Heifers	700 lbs.	Windell Talley *	NC	May	Pg 10
Lot 2156	1 Load	Heifers	750 lbs.	Stephenson Farm *	SC	May	Pg 10
Lot 2157	1 Load	Heifers	760 lbs.	HRW Farms *GAP VNB NHTC	NC	May	Pg 11
Lot 2158	1 Load	Heifers	785 lbs.	Hemric Farms *GAP VNB NHTC	NC	May	Pg 11
Lot 2159	1 Load	Heifers	800 lbs.	Frank Howey Farms *GAP VNB NHTC	NC	May	Pg 12
Lot 2160	1 Load	Heifers	800 lbs.	B&D Farms *GAP VNB NHTC	SC	May	Pg 12
Lot 2161	1 Load	Heifers	800 lbs.	Langley Farms	NC	June	Pg 13
Lot 2162	1 Load	Heifers	825 lbs.	Donald Chriscoe Farm *	NC	May	Pg 13
Lot 2163	1 Load	Steers	715 lbs.	Scotton Farms	NC	May	Pg 14
		Heifers	700 lbs.				
Lot 2164	0.45 Load	Steers	700 lbs.	Rock Barn Beef *VNB NHTC	NC	May	Pg 14
		Heifers	700 lbs.				
Lot 2165	0.8 Load	Steers	900 lbs.	Rock Barn Beef *VNB NHTC	NC	May	Pg 15
		Heifers	900 lbs.				

MACS Spring Cow Sale

Pg 16

Upcoming Sale Dates

Pg 17

DV Auction Online Bidding

Pg 18

MACS Sale Terms & Conditions

Pg 19

\* = All-Natural    **GAP**= GAP Certified    **VNB**= Verified Natural    **NE3** =NeverEver 3  
**NHTC**= Non-Hormone Treated    **CARE**= BeefCARE Certified

Most loads have weight stops at 25-50 lbs. over the base weight.

**UPDATE:** The individual weight stops are posted on each lot. Cattle that are picked up after the stated delivery dates will be subject to a **2# PER DAY** increase on the base weight and any weight stops for each day late after the last stated delivery date.



**Lot 2143 1 Load of STEERS**

Price: \$ \_\_\_\_\_ Buyer # \_\_\_\_\_

**Rolling Hill Farm (Clint Hill)**

Polkton, NC - 30 miles east of Charlotte, NC

**Backgrounded, Weaned****Base Weight:** 725 lbs. **Wt. Stop:** 760 lbs. **Variance:** 175 lbs.**Pickup Date:** May 30-June 3 **Estimated Head Count** 67**Slide/Shrink:** No shrink and slide \$5/cwt topside only**Weigh:** Hauled 30 miles to SCLM, weighed on certified ground scales**Notice to load:** 48 hours **Weaned:** 200+ days**Colors:** 51 hd blk/bwf, 8 hd ch-x, 8 red/rwf**Flesh:** Medium**Muscling:** 90% #1, 10% #1.5**Frame:** Medium**Nutrition:** Grazing ryegrass through winter, supplemented with some rye silage and hay. Bunk fed a little commodity feed. Free choice mineral.**Vaccinations:** Bovi-Shield Gold One Shot (1x), Bovi-Shield Gold 5 (1x), Vision 7 (1x), Nasalgen 3 (1x), Pink Eye (1x)**Dewormer:** Ivermectin Pour-On (1x), Dectomax Inject. (1x) **Implants:** None**Genetics:** Commercial Angus-based and continental-X cattle. 1 red calf w/ scurs.**Natural Status:** No**Comments:** Broke to bunks and waters. Docile steers that were put together in the fall and grazed over the winter, not being pushed hard mainly on ryegrass with a little silage. 85 head to sort a load from; smaller calves will be sorted off. Prefer not to load on Thursday if possible.**MACS Rep:** Catherine Edwards, 704-550-7920**Programs:****Lot 2144 1 Load of STEERS**

Price: \$ \_\_\_\_\_ Buyer # \_\_\_\_\_

**HRW Farms**

Thurmond, NC - 10 miles north of Elkin, NC

**Home-Raised, GAP-4, Verified Natural, NHTC, Backgrounded, Weaned****Base Weight:** 750 lbs. **Wt. Stop:** 790 lbs. **Variance:** 150 lbs.**Pickup Date:** May 20-27 **Estimated Head Count** 65**Slide/Shrink:** 2% shrink and slide \$5/cwt topside only**Weigh:** Certified ground scales at farm**Notice to load:** 48 hours **Weaned:** 90+ days**Colors:** 70% blk/bwf, 25% char-x, 2 hd red/rwf**Flesh:** Medium**Muscling:** 95% #1, 5% #1.5**Frame:** 90% Med, 10% Large**Nutrition:** Bunk fed 15# ph/pd of 14% feed and silage with free choice mineral and hay and on a 10 acre pasture.**Vaccinations:** Bovi-Shield Gold One Shot (1x), Bovi-Shield Gold 5 (1x), Alpha 7 (1x), Vision 7 20/20 (1x)**Dewormer:** Dectomax **Implants:** None**Genetics:** Sired by Charolais, Angus, and SimAngus bulls out of crossbred cows. All chars are crossbred with a black nose or gray/yellow, no purebred pink-noses.**Natural Status:** GAP-4; IMI Verified Natural; NHTC; Source & Age; Seller Affidavit**Comments:** Broke to bunks and waters. Home-raised, high-growth steers with Charolais and Angus genetics. Reputational calves from a very good program. Certifications can transfer at no cost. Will be EID tagged prior to shipment if needed.**MACS Rep:** Marcus Harward, 704-322-0840**Programs:**

**Lot 2145 1 Load of STEERS**

Price: \$ \_\_\_\_\_ Buyer # \_\_\_\_\_

**Langley Farms**

Asheboro, NC - 20 miles south of Greensboro, NC

**Backgrounded, Weaned****Base Weight:** 750 lbs. **Wt. Stop:** 785 lbs. **Variance:** 150 lbs.**Pickup Date:** June 13-17 **Estimated Head Count** 65**Slide/Shrink:** 2% shrink and slide \$5/cwt topside only**Weigh:** Certified ground scales at farm**Notice to load:** 48 hours **Weaned:** 120+ days**Colors:** 75% blk/bwf, 15% ch-x, 10% red/rwf (4-5 w/ flick of ear)**Flesh:** Medium**Muscling:** 75% #1, 25% #2**Frame:** 90% Med, 10% Large**Nutrition:** Bunk fed 5-8# TMR (corn silage, wet gluten) with free choice pasture, mineral, and hay.**Vaccinations:** Bovi-Shield Gold 5 (2x), Cavalry 9 (2x)**Dewormer:** LongRange (1x)**Implants:** None**Genetics:** Crossbred.**Natural Status:** No**Comments:** Broke to bunks and waters. Purchased and backgrounded together on pasture for over 100 days; running on grass with a little feed supplement.**MACS Rep:** Marcus Harward, 704-322-0840**Programs:**

zoetis

**Lot 2146 1 Load of STEERS**

Price: \$ \_\_\_\_\_ Buyer # \_\_\_\_\_

**Falling Creek Cattle Co (Manfred & Braxton Hood)**

Grantham, NC - 14 miles SW of Goldsboro, NC; 50 miles SE of Raleigh, NC

**Purchased Locally, Backgrounded, Weaned****Base Weight:** 775 lbs. **Wt. Stop:** 800 lbs. **Variance:** 150 lbs.**Pickup Date:** May 19-27 **Estimated Head Count** 63**Slide/Shrink:** 2% shrink and slide \$5/cwt topside only**Weigh:** Hauled 10 miles, weighed on the truck on certified scales**Notice to load:** 48 hours **Weaned:** 150+ days**Colors:** 61 hd blk/bwf, 2 hd ch-x**Flesh:** Medium**Muscling:** 95% #1, 5% #1.5**Frame:** Medium**Nutrition:** Bunk fed TMR (corn silage, cotton seed, chopped hay) with mineral.**Vaccinations:** Bovi-Shield Gold One Shot (1x), Inforce 3 (1x), One Shot BVD (1x)**Dewormer:** Ivermec (1x), Safeguard (1x), Cydectin (1x) **Implants:** None**Genetics:** Commercial Angus-based.**Natural Status:** No**Comments:** Broke to bunks and waters. Docile. Purchased from local producers as 4-weights and weaned and backgrounded for over 150 days. Fancy steers ready to go on feed carrying just a medium flesh.**MACS Rep:** Jeff Martin, 910-379-9173**Programs:**

SelectVAC



**Lot 2147 1 Load of STEERS**

Price: \$ \_\_\_\_\_ Buyer # \_\_\_\_\_

**Hemric Farms (Van Hemric)**

Ronda, NC - 40 miles northwest of Statesville, NC

Home-Raised, GAP-4, Verified Natural, NHTC, Backgrounded, BQA Cert.

**Base Weight:** 810 lbs. **Wt. Stop:** 850 lbs. **Variance:** 125 lbs.**Pickup Date:** May 20-27 **Estimated Head Count** 60**Slide/Shrink:** 2% shrink and slide \$5/cwt topside only**Weigh:** Certified MACS ground scales at farm**Notice to load:** 48 hours **Weaned:** 100+ days**Colors:** 94% blk/bwf, 6% ch-x or red**Flesh:** Medium**Muscling:** 95% #1, 5% #1.5**Frame:** Medium**Nutrition:** Bunk fed TMR of corn silage, DDGs, hay, and mineral on pasture.**Vaccinations:** Pyramid 5 w/Presponse (1x), Triangle 10 (1x), Cavalry 9 (2x), Pinkeye (1x)**Dewormer:** Cydectin (2x)**Implants:** None**Genetics:** Sired by purebred Angus bulls out of black Angus-based cows.**Natural Status:** GAP-4; BeefTraxx Verified Natural; NHTC; SAV; Seller Affidavit**Comments:** Broke to bunks and waters. A nice load of verified natural, GAP steers that are high percentage Angus, double vaccinated, weaned over 90 days. GAP certificate can transfer at no cost to buyer. (GAP#17107; Exp. 2/25/23)**MACS Rep:** Marcus Harward, 704-322-0840**Programs:****Lot 2148 1 Load of STEERS**

Price: \$ \_\_\_\_\_ Buyer # \_\_\_\_\_

**Frank Howey Farms**

Mount Croghan, SC - 40 miles southeast of Charlotte, NC

Home-Raised, IMI Verified Natural, GAP-4, Backgrounded, Weaned

**Base Weight:** 825 lbs. **Wt. Stop:** 875 lbs. **Variance:** 150 lbs.**Pickup Date:** May 20-27 **Estimated Head Count** 59**Slide/Shrink:** No shrink and slide \$5/cwt topside only**Weigh:** Hauled 30 miles to SCLM, weighed on certified ground scales**Notice to load:** 48-72 hours **Weaned:** 75+ days**Colors:** 60% blk/bwf, 40% ch-x, red, or rwf (15% w/ flick of ear)**Flesh:** Medium**Muscling:** 95% #1, 5% #1.5**Frame:** 90% Med, 10% Large**Nutrition:** 10 lbs ph/pd of 12% pellet feed with free choice pasture, hay, and VitaFerm minerals.**Vaccinations:** Vista Once (1x), Vista 5 (1x), Vision 7 (2x)**Dewormer:** Cydectin, Safeguard**Implants:** None**Genetics:** Primarily sired by Red Angus and Angus bulls with a few SimAngus bulls out of crossbred cows. 15% with a flick of ear.**Natural Status:** GAP-4; IMI Verified Natural; NHTC; Source & Age; Seller Affidavit**Comments:** Broke to bunks and waters. A very good set of high-growth steers that will finish as a big set of feeders. Primarily Angus with a lot of Red Angus influence in the cows and bulls. GAP certificate will transfer at no cost to buyer.**MACS Rep:** Marcus Harward, 704-322-0840**Programs:**



**Lot 2149 1 Load of STEERS**

Price: \$ \_\_\_\_\_ Buyer # \_\_\_\_\_

**B & D Farms**

Lancaster, SC - 35 miles southeast of Charlotte, NC

**Home-Raised, GAP-4, Verified Natural, Backgrounded, Weaned****Base Weight:** 825 lbs. **Wt. Stop:** 860 lbs. **Variance:** 200 lbs.**Pickup Date:** May 20-27 **Estimated Head Count** 59**Slide/Shrink:** 2% shrink and slide \$5/cwt topside only**Weigh:** Hauled 3 miles, weighed on certified ground scales.**Notice to load:** 48 hours **Weaned:** 90+ days**Colors:** 70% blk/bwf, 25% ch-x, 5% red/rwf**Muscling:** 90% #1, 10% #1.5**Nutrition:** Bunk fed 10# ph/pd of commodity pellet feed with free choice mineral, pasture, and hay**Vaccinations:** Bovi-Shield Gold One Shot (1x), Bovi-Shield Gold 5 (1x), Ultrabac 7 w/somnus (1x), Cavalry 9 (1x)**Dewormer:** Dectomax**Implants:** None**Genetics:** Angus & crossbred genetics. Might be 2-3 hd with tipped horns.**Natural Status:** GAP-4; IMI Verified Natural; NHTC; Source and Age; Seller Affidavit**Comments:** Broke to bunks and waters. Handfed and have not been pushed at all, weaned well over 60 days. All-natural certifications can transfer at no cost to the buyer. (GAP#15257; Exp. 6/25/22)**MACS Rep:** Marcus Harward, 704-322-0840**Programs:****Flesh:** Medium**Frame:** Medium**Lot 2150 1 Load of STEERS**

Price: \$ \_\_\_\_\_ Buyer # \_\_\_\_\_

**Stephenson Farm (Ron Stephenson)**

Chester, SC - 45 miles southwest of Charlotte, NC

**Home-Raised, Natural, Backgrounded, Weaned****Base Weight:** 825 lbs. **Wt. Stop:** 860 lbs. **Variance:** 125 lbs.**Pickup Date:** May 20-28 **Estimated Head Count** 59**Slide/Shrink:** 2% shrink and slide \$5/cwt topside only**Weigh:** Hauled 5 miles, weighed on the truck on certified scales**Notice to load:** 48 hours **Weaned:** 120+ days**Colors:** 90% blk/bwf, 3-4 hd chx, 2-3 hd red**Muscling:** 95% #1, 5% #1.5**Nutrition:** No feed. On small grain pasture with free choice mineral and hay**Vaccinations:** Bovi-Shield Gold 5 (2x), Presponse (1x), Ultrabac 7 (2x)**Dewormer:** Safeguard (2x)**Implants:** None**Genetics:** Angus sired out of Angus, Char-X, and Hereford-X cows**Natural Status:** Seller Affidavit**Comments:** A fancy set of steers that have been backgrounded on just pasture, no feed. Carrying just a medium flesh, an excellent set of steers ready to go to feed.**MACS Rep:** Marcus Harward, 704-322-0840**Programs:****Flesh:** Medium**Frame:** 95% Med, 5% Large

**Lot 2151 1 Load of STEERS**

Price: \$ \_\_\_\_\_ Buyer # \_\_\_\_\_

**Langley Farms**

Asheboro, NC - 20 miles south of Greensboro, NC

**Backgrounded, Weaned****Base Weight:** 825 lbs. **Wt. Stop:** 860 lbs. **Variance:** 150 lbs.**Pickup Date:** June 13-17 **Estimated Head Count** 59**Slide/Shrink:** 2% shrink and slide \$5/cwt topside only**Weigh:** Certified ground scales at farm**Notice to load:** 48 hours **Weaned:** 120+ days**Colors:** 75% blk/bwf, 15% ch-x, 10% red/rwf (4-5 w/ flick of ear)**Flesh:** Medium**Muscling:** 75% #1, 25% #2**Frame:** 90% Med, 10% Large**Nutrition:** Bunk fed 5-8# TMR (corn silage, wet gluten) with free choice pasture, mineral, and hay.**Vaccinations:** Bovi-Shield Gold 5 (2x), Cavalry 9 (2x)**Dewormer:** LongRange (1x)**Implants:** None**Genetics:** Crossbred.**Natural Status:** No**Comments:** Broke to bunks and waters. Purchased and backgrounded together on pasture for over 100 days; running on grass with a little feed supplement.**MACS Rep:** Marcus Harward, 704-322-0840**Programs:****zoetis****Lot 2152 1 Load of STEERS**

Price: \$ \_\_\_\_\_ Buyer # \_\_\_\_\_

**Donald Chriscoe Farm**

Asheboro, NC - 40 miles south of Greensboro, NC

**Affidavit Natural, Backgrounded, Weaned****Base Weight:** 875 lbs. **Wt. Stop:** 910 lbs. **Variance:** 150 lbs.**Pickup Date:** May 20-27 **Estimated Head Count** 55**Slide/Shrink:** 2% shrink and slide \$5/cwt topside only**Weigh:** Certified ground scales at farm**Notice to load:** 24-48 hours **Weaned:** 120+ days**Colors:** 54 hd blk/bwf, 1 hd ch-x**Flesh:** Medium**Muscling:** 95% #1, 5% #1.5**Frame:** Medium**Nutrition:** Bunk fed haylage and DDG TMR with access to mineral, hay, and pasture**Vaccinations:** Vista 5 (2x), Nuplura (1x), Vision 7 20/20 (1x), OcuGuard Pinkeye (1x)**Dewormer:** Ivomec Inject. (2x)**Implants:** None**Genetics:** Commercial Angus-based. Mainly sired by Angus and SimAngus bulls.**Natural Status:** Seller Affidavit**Comments:** Broke to bunks and waters. Reputational calves purchased from local producers and backgrounded at Chriscoe's for 100+ days. Owner affidavit natural - signed Meyer's affidavits from original producers.**MACS Rep:** Marcus Harward, 704-322-0840**Programs:****Natural AFFIDAVIT**

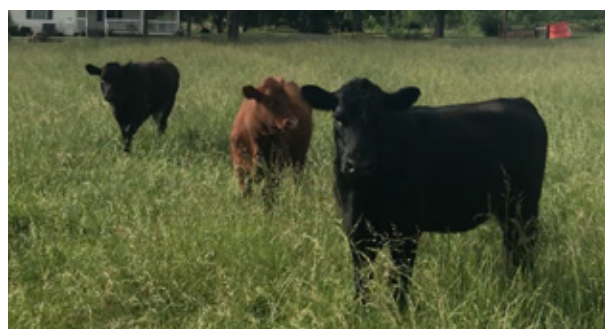


**Lot 2153 0.6 Load of HEIFERS**

Price: \$ \_\_\_\_\_ Buyer # \_\_\_\_\_

**Cooke Cattle**

Casar, NC - 20 miles north of Shelby, NC

**Backgrounded, Weaned, Open****Base Weight:** 625 lbs. **Wt. Stop:** 660 lbs. **Variance:** 150 lbs.**Pickup Date:** May 19-27 **Estimated Head Count** 45**Slide/Shrink:** No shrink and slide \$8/cwt topside only**Weigh:** Hauled 30 miles, weighed on certified ground scales**Notice to load:** 48 hours **Weaned:** 60+ days**Colors:** 36 hd blk/bwf, 4 hd ch-x, 5 hd red/rwf**Muscling:** 90% #1, 10% #1.5**Nutrition:** Bunk fed a few lbs. of a 12% feed to keep them coming up. Mainly on pasture with free choice mineral.**Vaccinations:** Bovi-Shield Gold 5 (1x), Vista Once (1x), Triangle 10 (2x), Vision 7 (2x)**Dewormer:** Ivomec Pour-On (2x)**Implants:** None**Genetics:** Commercial Angus-based.**Natural Status:** No**Heifers Open:** Guaranteed open, not palpated.**Comments:** Broke to bunks and waters. A good load of heifers that are not getting pushed hard and are carrying just a medium grass flesh.**MACS Rep:** Jimmy Dagenhart, 704-425-3587**Programs:****Flesh:** Medium & Med-Light**Frame:** Medium**Lot 2154 1 Load of HEIFERS**

Price: \$ \_\_\_\_\_ Buyer # \_\_\_\_\_

**Dixon Family Farms & Holt Farms**

Graham, NC - 20 miles southeast of Greensboro, NC

**Backgrounded, Weaned, Guaranteed Open****Base Weight:** 690 lbs. **Wt. Stop:** 725 lbs. **Variance:** 150 lbs.**Pickup Date:** May 20-27 **Estimated Head Count** 70**Slide/Shrink:** 2% shrink and slide \$7/cwt topside only**Weigh:** Certified MACS ground scales at farm**Notice to load:** 48 hours **Weaned:** 90+ days**Colors:** 68 hd blk/bwf, 2 hd ch-x**Muscling:** 90% #1, 10% #1.5**Nutrition:** Bunk fed a little silage TMR with grain in bunks with free choice mineral, pasture, and hay.**Vaccinations:** Bovi-Shield Gold One Shot (1x), Bovi-Shield Gold 5 (1x), Ultrabac 7 (2x), Pinkeye (1x)**Dewormer:** Ivomec Inject.**Implants:** None**Genetics:** Commercial Angus-based.**Natural Status:** No**Heifers Open:** Guaranteed open, not palpated.**Comments:** Broke to bunks and waters. Purchased and backgrounded. From two neighboring farms and brought together the morning of load out. 2-3 may have a spot in their eye. Grass-flesh cattle.**MACS Rep:** Marcus Harward, 704-322-0840**Programs:****Flesh:** Medium**Frame:** Medium

**Lot 2155 1 Load of HEIFERS**

Price: \$ \_\_\_\_\_ Buyer # \_\_\_\_\_

**Windell Talley**

Stanfield, NC - 15 miles east of Charlotte, NC

**Home-Raised, All-Natural, Backgrounded, Weaned****Base Weight:** 700 lbs. **Wt. Stop:** 735 lbs. **Variance:** 200 lbs.**Pickup Date:** May 18-27**Estimated Head Count** 69**Slide/Shrink:** 2% shrink and slide \$5/cwt topside only**Weigh:** On the truck at Talley Feed Mill**Notice to load:** 24-48 hours**Weaned:** 75+ days**Colors:** 64 hd blk/bwf, 4 hd red**Flesh:** Medium**Muscling:** 95% #1, 5% #1.5**Frame:** Medium**Nutrition:** Bunk fed TMR (silage, wheat midds, soyhulls) with free choice mineral**Vaccinations:** Vista Once (1x), Vista 5 (1x), Vision 7 w/somnus (2x)**Dewormer:** Ivermec (2x)**Implants:** None**Genetics:** 50%+ Angus. Sired by Leachman genetics (Angus & black Stabilizer) out of Leachman influenced Angus & Stabilizer cows**Natural Status:** Seller Affidavit**Heifers Open:** Not palpated. Will guarantee open if heifers are checked within 4 weeks of delivery.**Comments:** Broke to bunks and waters. BQA Certified. Excellent set of high-quality genetics that should feed and finish very well. Qualify as all-natural. Will be a couple with a blue eye.**MACS Rep:** Bruce Shankle, 704-694-8686**Programs:***Natural*  
**AFFIDAVIT***LEACHMAN*  
CATTLE & CO. OF COLORADO**PrimeVAC**  
BY MERCK ANIMAL HEALTH**Lot 2156 1 Load of HEIFERS**

Price: \$ \_\_\_\_\_ Buyer # \_\_\_\_\_

**Stephenson Farm (Ron Stephenson)**

Chester, SC - 45 miles southwest of Charlotte, NC

**Home-Raised, Natural, Backgrounded, Weaned****Base Weight:** 750 lbs. **Wt. Stop:** 785 lbs. **Variance:** 125 lbs.**Pickup Date:** May 20-28**Estimated Head Count** 65**Slide/Shrink:** 2% shrink and slide \$5/cwt topside only**Weigh:** Hauled 5 miles, weighed on the truck on certified scales**Notice to load:** 48-72 hours**Weaned:** 120+ days**Colors:** 90% blk/bwf, 3-4 hd chx, 2-3 hd red**Flesh:** Medium**Muscling:** 95% #1, 5% #1.5**Frame:** 95% Med, 5% Large**Nutrition:** No feed. On small grain pasture with free choice mineral and hay**Vaccinations:** Bovi-Shield Gold 5 (2x), Presponse (1x), Ultrabac 7 (2x)**Dewormer:** Safeguard (2x)**Implants:** None**Genetics:** Angus sired out of Angus, Char-X, and Hereford-X cows**Natural Status:** Seller Affidavit.**Heifers Open:** Guaranteed open, not palpated**Comments:** A fancy set of heifers that have been backgrounded on just pasture, no feed. Carrying just a medium flesh, an excellent set of heifers ready to go to feed.**MACS Rep:** Marcus Harward, 704-322-0840**Programs:***Natural*  
**AFFIDAVIT****zoetis**

**Lot 2157 1 Load of HEIFERS**

Price: \$ \_\_\_\_\_ Buyer # \_\_\_\_\_

**HRW Farms**

Thurmond, NC - 10 miles north of Elkin, NC

Home-Raised, GAP-4, Verified Natural, NHTC, Backgrounded, Weaned

**Base Weight:** 760 lbs. **Wt. Stop:** 800 lbs. **Variance:** 150 lbs.**Pickup Date:** May 20-27 **Estimated Head Count** 64**Slide/Shrink:** 2% shrink and slide \$5/cwt topside only**Weigh:** Certified ground scales at farm**Notice to load:** 48 hours **Weaned:** 90+ days**Colors:** 90% blk/bwf, 10% char-x**Muscling:** 95% #1, 5% #1.5**Nutrition:** Bunk fed 15# ph/pd of 14% feed and silage with free choice mineral and hay and on a 10 acre pasture.**Vaccinations:** Bovi-Shield Gold One Shot (1x), Bovi-Shield Gold 5 (1x), Alpha 7 (1x), Vision 7 20/20 (1x)**Dewormer:** Dectomax**Implants:** None**Genetics:** Sired by Charolais, Angus, and SimAngus bulls out of crossbred cows. All chars are crossbred with a black nose or gray/yellow, no purebred pink-noses.**Natural Status:** GAP-4; IMI Verified Natural; NHTC; SAV; Affidavit .**Heifers:** Guaranteed open, not palpated.**Comments:** Broke to bunks and waters. Home-raised, high-growth steers with Charolais and Angus genetics. Reputational calves from a very good program. Certifications can transfer at no cost. Will be EID tagged prior to shipment if needed.**MACS Rep:** Marcus Harward, 704-322-0840**Programs:****Flesh:** Medium**Frame:** 90% Med, 10% Large**Lot 2158 1 Load of HEIFERS**

Price: \$ \_\_\_\_\_ Buyer # \_\_\_\_\_

**Hemric Farms (Van Hemric)**

Ronda, NC - 40 miles northwest of Statesville, NC

Home-Raised, GAP-4, Verified Natural, NHTC, Backgrounded, BQA Cert.

**Base Weight:** 785 lbs. **Wt. Stop:** 825 lbs. **Variance:** 125 lbs.**Pickup Date:** May 20-27 **Estimated Head Count** 62**Slide/Shrink:** 2% shrink and slide \$5/cwt topside only**Weigh:** Certified MACS ground scales at farm**Notice to load:** 48 hours **Weaned:** 100+ days**Colors:** 94% blk/bwf, 6% ch-x or red**Muscling:** 95% #1, 5% #1.5**Nutrition:** Bunk fed TMR of corn silage, DDGs, hay, and mineral on pasture.**Vaccinations:** Pyramid 5 w/Presponse (1x), Triangle 10 (1x), Cavalry 9 (2x), Pinkeye (1x)**Dewormer:** Cydectin (2x)**Implants:** None**Genetics:** Sired by purebred Angus bulls out of black Angus-based cows.**Natural Status:** GAP-4; BeefTraxx Verified Natural; NHTC; SAV; Affidavit .**Heifers:** Vet palpated, guaranteed open.**Comments:** Broke to bunks and waters. A nice load of verified natural, GAP heifers that are high percentage Angus, double vaccinated, weaned over 90 days. GAP certificate can transfer at no cost to buyer. (GAP#17107; Exp. 2/25/23)**MACS Rep:** Marcus Harward, 704-322-0840**Programs:****Flesh:** Medium**Frame:** Medium



**Lot 2159 1 Load of HEIFERS**

Price: \$ \_\_\_\_\_ Buyer # \_\_\_\_\_

**Frank Howey Farms**

Mount Croghan, SC - 40 miles southeast of Charlotte, NC

**Home-Raised, IMI Verified Natural, GAP-4, Backgrounded, Weaned****Base Weight:** 800 lbs. **Wt. Stop:** 850 lbs. **Variance:** 150 lbs.**Pickup Date:** May 20-27**Estimated Head Count** 61**Slide/Shrink:** No shrink and slide \$5/cwt topside only**Weigh:** Hauled 30 miles to SCLM, weighed on certified ground scales**Notice to load:** 48-72 hours**Weaned:** 75+ days**Colors:** 85% blk/bwf, 10% ch-x, 5% red/rwf (5% w/ flick of ear)**Flesh:** Medium**Muscling:** 95% #1, 5% #1.5**Frame:** 90% Med, 10% Large**Nutrition:** 10 lbs ph/pd of 12% pellet feed with free choice pasture, hay, and VitaFerm minerals.**Vaccinations:** Vista Once (1x), Vista 5 (1x), Vision 7 (2x)**Dewormer:** Cydectin, Safeguard**Implants:** None**Genetics:** Primarily sired by Red Angus and Angus bulls with a few SimAngus bulls out of crossbred cows. 5% with a flick of ear.**Natural Status:** GAP-4; IMI Verified Natural; NHTC; SAV; Affidavit. **Heifers:** Guaranteed open, not palpated.**Comments:** Broke to bunks and waters. A very good set of high-growth heifers that will finish as a big set of feeders. Primarily Angus with a lot of Red Angus influence in the cows and bulls. GAP certificate will transfer at no cost to buyer.**MACS Rep:** Marcus Harward, 704-322-0840**Programs:****Lot 2160 1 Load of HEIFERS**

Price: \$ \_\_\_\_\_ Buyer # \_\_\_\_\_

**B & D Farms**

Lancaster, SC - 35 miles southeast of Charlotte, NC

**Home-Raised, GAP-4, Verified Natural, Backgrounded, Weaned****Base Weight:** 800 lbs. **Wt. Stop:** 835 lbs. **Variance:** 200 lbs.**Pickup Date:** May 20-27**Estimated Head Count** 61**Slide/Shrink:** 2% shrink and slide \$5/cwt topside only**Weigh:** Hauled 3 miles, weighed on certified ground scales.**Notice to load:** 48 hours**Weaned:** 90+ days**Colors:** 70% blk/bwf, 25% ch-x, 5% red/rwf**Flesh:** Medium**Muscling:** 90% #1, 10% #1.5**Frame:** Medium**Nutrition:** Bunk fed 10# ph/pd of commodity pellet feed with free choice mineral, pasture, and hay**Vaccinations:** Bovi-Shield Gold One Shot (1x), Bovi-Shield Gold 5 (1x), Ultrabac 7 w/somnus (1x), Cavalry 9 (1x)**Dewormer:** Dectomax**Implants:** None**Genetics:** Angus & crossbred genetics. Might be 2-3 hd with tipped horns.**Natural Status:** GAP-4; IMI Verified Natural; NHTC; SAV; Affidavit**Heifers:** Guaranteed open, not palpated.**Comments:** Broke to bunks and waters. Handfed and have not been pushed at all, weaned well over 60 days. All-natural certifications can transfer at no cost to the buyer. (GAP#15257; Exp. 6/25/22)**MACS Rep:** Marcus Harward, 704-322-0840**Programs:**

**Lot 2161 1 Load of HEIFERS**

Price: \$ \_\_\_\_\_ Buyer # \_\_\_\_\_

**Langley Farms**

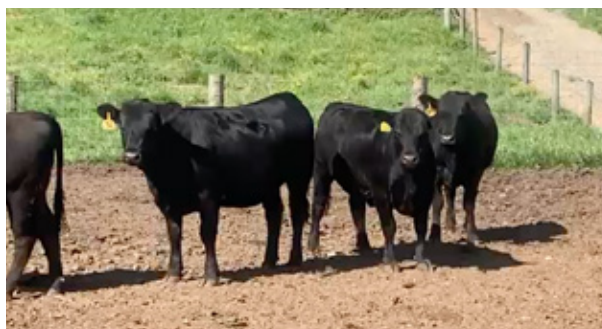
Asheboro, NC - 20 miles south of Greensboro, NC

**Backgrounded, Weaned, Guaranteed Open****Base Weight:** 800 lbs. **Wt. Stop:** 835 lbs. **Variance:** 150 lbs.**Pickup Date:** June 13-17 **Estimated Head Count** 61**Slide/Shrink:** 2% shrink and slide \$5/cwt topside only**Weigh:** Certified ground scales at farm**Notice to load:** 48 hours **Weaned:** 120+ days**Colors:** 80% blk/bwf, 20% ch-x, red or rwf**Muscling:** 85% #1, 15% #2**Nutrition:** Bunk fed 5-8# TMR (corn silage, wet gluten) with free choice pasture, mineral, and hay.**Vaccinations:** Bovi-Shield Gold 5 (2x), Cavalry 9 (2x)**Dewormer:** LongRange (1x)**Implants:** None**Genetics:** Crossbred. 2-3 pink-nose Chars; no Hereford; no ear.**Natural Status:** No**Heifers Open:** Palpated, guaranteed open.**Comments:** Broke to bunks and waters. Purchased and backgrounded together on pasture for over 100 days; running on grass with a little feed supplement.**MACS Rep:** Marcus Harward, 704-322-0840**Programs:****zoetis****Flesh:** Medium**Frame:** Medium**Lot 2162 1 Load of HEIFERS**

Price: \$ \_\_\_\_\_ Buyer # \_\_\_\_\_

**Donald Chriscoe Farm**

Asheboro, NC - 40 miles south of Greensboro, NC

**Affidavit Natural, Backgrounded, Weaned, Guaranteed Open****Base Weight:** 820 lbs. **Wt. Stop:** 855 lbs. **Variance:** 150 lbs.**Pickup Date:** May 20-27 **Estimated Head Count** 59**Slide/Shrink:** 2% shrink and slide \$5/cwt topside only**Weigh:** Certified ground scales at farm**Notice to load:** 24-48 hours **Weaned:** 120+ days**Colors:** 50 hd blk/bwf, 9 hd ch-x**Muscling:** 95% #1, 5% #1.5**Nutrition:** Bunk fed haylage and DDG TMR with access to mineral, hay, and pasture**Vaccinations:** Vista 5 (2x), Nuplura (1x), Vision 7 20/20 (1x), OcuGuard Pinkeye (1x)**Dewormer:** Ivomec Inject. (2x)**Implants:** None**Genetics:** Commercial Angus-based. Mainly sired by Angus and SimAngus bulls.**Natural Status:** Seller Affidavit**Heifers Open:** Palpated, guaranteed open.**Comments:** Broke to bunks and waters. Reputational calves purchased from local producers and backgrounded at Chriscoe's for 100+ days. Owner affidavit natural - signed Meyer's affidavits from original producers.**MACS Rep:** Marcus Harward, 704-322-0840**Programs:****Natural AFFIDAVIT****MERCK**  
Animal Health**Flesh:** Medium**Frame:** Medium



**Lot 2163 1 Load of STRS/HFRS**

Price: \$ \_\_\_\_\_ Buyer # \_\_\_\_\_

**Scotton Farms**

Staley, NC - 20 miles southeast of Greensboro, NC

**Backgrounded, Weaned**

~42 Steers Wt: 715 lbs. Wt. Stop: 760 lbs. Variance: 150 lbs.

~28 Hfrs Wt: 700 lbs. Wt. Stop: 745 lbs. Variance: 150 lbs.

**Heifers sell \$10/cwt back****Pickup Date:** May 24-26**Slide/Shrink:** None shrink and slide \$5/cwt topside only**Weigh:** Hauled 15 miles to Alamance Cattlemen's barn, unloaded, sorted, weighed on MACS certified ground scales**Notice:** 72 hours **Weaned:** 200+ days**Colors:** 50 hd blk/bwf, 10 hd char-x, 10 hd red/rwf**Muscling:** 90% #1, 10% #1.5**Nutrition:** Bunk fed 4-5# daily ground corn and cotton seed. Running on fescue & rye pastures. Free choice hay and Southern States FlyMag mineral.**Vaccinations:** Bovi-Shield Gold One Shot (1x), Vision 7 20/20 (1x)**Dewormer:** Safeguard (3x)**Implants:** Ralgro (1x)**Genetics:** Commercial Angus-based and crossbred. 2-3 hd with scurs.**Natural Status:** No**Heifers Open:** Guaranteed open, not palpated.**Comments:** Broke to bunks. 120 head to sort a load from, pink-nose chars will be sorted off. Purchased from local sale barns last winter and turned out. Have primarily been on grass and hand fed daily. Cattle will be brought in that morning and will be ready to load about noon.**MACS Rep:** Catherine Edwards, 704-550-7920**Programs:****zoetis****Flesh:** Medium**Frame:** Medium**Lot 2164 0.45 Load of STRS/HFRS**

Price: \$ \_\_\_\_\_ Buyer # \_\_\_\_\_

**Rock Barn Beef**

Catawba, NC - 15 miles west of Statesville, NC

**Home-Raised, Verified Natural, NHTC, Backgrounded, Weaned**

~18 Steers Wt: 700 lbs. Wt. Stop: 735 lbs. Variance: 150 lbs.

~14 Hfrs Wt: 700 lbs. Wt. Stop: 735 lbs. Variance: 150 lbs.

**Heifers sell \$12/cwt back****Pickup Date:** May 19-27**Slide/Shrink:** 1% shrink and slide \$5/cwt topside only**Weigh:** Hauled 25 miles, weighed on ground scales**Notice:** 48 hours **Weaned:** 120+ days**Colors:** 31 hd blk/bwf, 1 hd ch-x**Muscling:** 90% #1, 10% #1.5**Nutrition:** Bunk fed 8-10# commodity pellet with hay and gin trash and free choice mineral.**Vaccinations:** Vista Once (1x), Vista 5 (1x), Vision 7 w/somnus (2x)**Dewormer:** Dectomax (2x)**Implants:** None**Genetics:** 50-75% Angus. Sired by Angus and SimAngus bulls from Yon and Partisover out of Angus and Angus-X cows.**Natural Status:** BeefTraxx Verified Natural; NHTC; SAV; Seller Affidavit. **Heifers:** Vet palpated, guaranteed open.**Comments:** Broke to bunks and waters. A good set of calves that are verified natural and will sign natural affidavits, are bunk broke, and weaned over 120 days. A partial load of 32 head at about 22,500 lbs.**MACS Rep:** Jimmy Dagenhart, 704-425-3587**Programs:****Natural AFFIDAVIT****BeefTraxx**  
VERIFY TO QUALIFY**NHTC****YON**  
FAMILY FARMS**PrimeVAC**  
BY MERCK ANIMAL HEALTH**Flesh:** Medium**Frame:** Medium



**Lot 2165 0.8 Load of STRS/HFRS**

Price: \$ \_\_\_\_\_ Buyer # \_\_\_\_\_

**Rock Barn Beef**

Catawba, NC - 15 miles west of Statesville, NC

**Home-Raised, Verified Natural, NHTC, Backgrounded, Weaned****~28 Steers Wt: 900 lbs. Wt. Stop: 935 lbs. Variance: 200 lbs.****~14 Hfrs Wt: 900 lbs. Wt. Stop: 935 lbs. Variance: 200 lbs.****Heifers sell \$12/cwt back****Pickup Date:** May 19-27**Slide/Shrink:** 1% shrink and slide \$5/cwt topside only**Weigh:** Hauled 25 miles, weighed on ground scales**Notice:** 48 hours **Weaned:** 120+ days**Colors:** 38 hd blk/bwf, 3-4 hd ch-x**Flesh:** Medium**Muscling:** 90% #1, 10% #1.5**Frame:** Medium**Nutrition:** Bunk fed 8-10# commodity pellet with hay and gin trash and free choice mineral.**Vaccinations:** Vista Once (1x), Vista 5 (1x), Vision 7 w/somnus (2x)**Dewormer:** Dectomax (2x) **Implants:** None**Genetics:** 50-75% Angus. Sired by Angus and SimAngus bulls from Yon and Partisover out of Angus and Angus-X cows.**Natural Status:** BeefTraxx Verified Natural; NHTC; SAV; Seller Affidavit. **Heifers:** Vet palpated, guaranteed open.**Comments:** Broke to bunks and waters. A good set of calves that are verified natural and will sign natural affidavits, are bunk broke, and weaned over 120 days. A partial load of 42 head at about 38,000 lbs.**MACS Rep:** Jimmy Dagenhart, 704-425-3587**Programs:**

## Watch and Bid online



To view the sale or bid online, visit [www.DVAuction.com](http://www.DVAuction.com). Find the "Mid-Atlantic Cattle Sales (Richfield, NC)" sale and click on "Details." From this page you can view the catalog, videos, or log in to watch the sale. If you have an account, log in and view the sale. If you do not, you must create an account under the "Create New Account" tab in the upper left hand corner of the screen. You will need to confirm this account through your e-mail.

**You DO NOT have to be approved for a buyer's number just to watch the sale but you will still need to create an account with DVAuction.**

# MACS SPRING COW SALE

Saturday • **MAY 21, 2022** • 12:00 noon  
at Stanly County Livestock Market, Norwood, NC

## **100 FALL BRED COWS FROM GRADY FARMS**

All cows are black or BWF and are 3-4 years old,  
due October-November to registered Angus bulls

## **30 BRED HEIFERS FROM BAKER BROTHERS FARM**

Coming two-year-olds due to calve this fall. Al'd once and  
then turned in with calving-ease Angus bulls.

## **30 COW/CALF PAIRS FROM TWIN OAKS FARM**

Black cows with spring calves at side weighing 200-400 lbs.

## **20 COW/CALF PAIRS AND**

## **20 BRED COWS FROM KR FARMS**

Black, Red, and Char-X cows bred to registered  
Angus bulls. Cows are 4-8 years old.

## **5 COW/CALF PAIRS FROM SHEEK FARMS**

Angus-based genetics with Spring calves at side

## **25 BRED COWS AND COW/CALF PAIRS FROM TITAN CATTLE CO**

Angus-based genetics bred to registered Angus bulls.

*Selling 230+ Cow/Calf Pairs and Fall Bred Cows & Heifers*

**WWW.MACSVideos.COM**

**DVAuction**  
Broadcasting Real-Time Auctions

All females will be checked for reproductive soundness and estimated calving date by a licensed vet from Rocky Creek Vet Services. Updated information will be available online the night before the sale.

Cattle are available to view Friday evening or Saturday morning prior to the sale.  
We would like to load out all cattle Saturday or Sunday if possible. Hay will be provided for the animals overnight. Trucking is also available if needed.

## **SALE LOCATION:**

Stanly County Livestock Market - 13215 Indian Mound Rd. Norwood, NC

Online bidding available at [www.DVAuction.com](http://www.DVAuction.com)

**DVAuction**  
Broadcasting Real-Time Auctions



# MID-ATLANTIC CATTLE SALES

WWW.MACSVIDEO.COM



## UPCOMING SALES

May 17, 2022  
June 7, 2022  
June 21, 2022  
July 5, 2022  
July 19, 2022  
August 2, 2022  
August 16, 2022

September 6, 2022  
September 20, 2022  
October 4, 2022  
October 18, 2022  
November 1, 2022  
November 15, 2022  
December 6, 2022

*Our motto - Working hard for you today and every day!*





To view the sale or bid online, visit [www.DVAuction.com](http://www.DVAuction.com). Find the "Mid-Atlantic Cattle Sales (Richfield, NC)" sale and click on "Details." From this page you can view the catalog, videos, or log in to watch the sale. If you have an account, log in and view the sale. If you do not, you must create an account under the "Create New Account" tab in the upper left hand corner of the screen. You will need to confirm this account through your e-mail.

You DO NOT have to be approved for a buyer's number just to watch the sale but you will still need to create an account with DVAuction.



Mid-Atlantic Cattle Sales, LLC  
28978 Misenheimer Rd. Richfield, NC 28137  
[info@macsvideo.com](mailto:info@macsvideo.com) • [www.MACSVideo.com](http://www.MACSVideo.com)

*\*Bonded through USDA Packers & Stockyards*

# MACS Sale Terms and Conditions

1. Each bidder must be pre-registered and have a Buyer Number to participate in the auction. To register for the auction call 704-322-9770 or register through DV Auction. By participating in the auction the Buyer expressly agrees to adhere to these Terms and Conditions and to the provisions set forth in the Livestock Purchase Agreement sent after the auction. All cattle being offered for sale are under standard Contracts for Sale. All cattle are purchased under standard Contracts for Purchase by the Buyers.
2. The cattle offered for sale are indicated on the sale sheets or online sale description as described to the MACS representatives by the owner. They are described by lot numbers, seller, location of cattle, numbers of head, estimated weight, management practices, delivery date, conditions of sale and delivery, and verified programs. Representatives for each load are listed under each respective lot. Every effort has been made to assure the correctness of this information but all announcements from the auctioneer or official auction staff prior to or during the sale shall take precedence over printed matter herein.
3. Auction bids will be taken as voice bids by telephone and in person or online bids through DV Auction. Bids are asked with each lot of cattle and will be sold to the highest bidder on the basis of estimated weight. Seller reserves the right to "no sale" the load lot(s) of his cattle at the time the highest bid is made as long as the "no sale" announcement is made prior to the next lot being sold. Any departure from this procedure will be announced and all announcements made from the auctioneer or official auction staff will take precedence over printed matter herein.
4. The Auctioneer reserves the right to reject any and all bids. Auctioneer will settle all disputed bids. If a dispute arises between two or more bidders, the Auctioneer may immediately put the lot up for sale again and resell to the highest bidder. The decision of the Auctioneer shall be final and absolute.
5. One full load of stocker or feeder cattle will be contracted for approximately 48,000 lbs. and the respective head count at the base weight at the full truckload weight. No freight adjustment will be given if the average weight at delivery is under the base weight and the head count delivered is within 95% of the contracted head count. Mid-Atlantic Cattle Sales and its representatives will act as agents only in the sale of lots of cattle. As the marketing agency we cannot guarantee a minimum or maximum amount of shrink on any load. Any weight guarantees in regards to shrink must be given by Seller. Mid-Atlantic Cattle Sales cannot guarantee off truck weights.
6. Cattle that are picked up after the stated delivery dates will be subject to a 2# per head per day increase on the base weight and any weight stops for each day late after the last stated delivery date.
7. Most loads have weight stops at 25-50 lbs. over the base weight. The individual weight stops are posted on each lot. All cattle will be sold on a sliding scale as listed on each load.
8. On split loads the heifer price will be \$\_\_\_/cwt (as stated in the lot information) back of the original price of the steers.
9. The Buyer is responsible for all arrangements and regulatory requirements with respect to the transportation of the livestock and the Buyer is responsible for sending trucks to adequately load the number of head and/or the total weight contracted in order to legally transport them to their final destination. Cattle sold will be sorted and delivered to the stated weigh point by the Seller and weighed on a certified scale. Buyer will receive the cattle at point of weighing under conditions as stated with respect to each lot. Buyer will take ownership of the cattle at the point of loading.
10. Health entry requirements for the state of entry are the responsibility of the Buyer. The Seller will furnish any health certificates required for the state of origin and Federal Law at the request of the buyer. If additional health certificates, documentation or tests are required for shipment to the Buyer's destination, it shall be at the Buyer's request and expense.
11. Any heifer that is sold as guaranteed open and is determined to be bred by the buyer will receive a \$200 per bred heifer refund given appropriate documentation is provided within 60 days of the cattle being delivered. Documentation must include lot information, heifer identification, and veterinarian documentation.
12. Payment by Buyer is due and payable in accordance with USDA P&S prompt pay policy upon delivery of the cattle and at such times as the value of the cattle is determined based on weight (subject to condition), price (subject to condition), and any other conditions stated at time of sale. Payment must be sent to Mid-Atlantic Cattle Sales within 1 day after the cattle are received by the Buyer. We request that all payments be sent by Wire Transfer, ACH, or overnight delivery of a check via FedEx or UPS. Payment sent via the U.S. Postal Service (1st Class or Priority Mail) are expected to be received within 7 business days of delivery. Any fees incurred for sending payment will be at the Buyer's expense.
13. Mid-Atlantic Cattle Sales does not warrant the harvest date on source and age verified cattle and cannot guarantee back verification on any program requiring signed affidavits or 3rd party verification. Mid-Atlantic Cattle Sales will make all efforts to ensure verifications are met, but it is the Buyer's responsibility to verify all claims of the Seller to fit specific programs prior to purchase.
14. There are no implied warranties of merchantability or fitness for a particular purpose on any livestock sold. Seller does not warrant that the livestock are free from any latent defect, condition, sickness, or disease. Seller does not assume responsibility for any loss after the livestock are delivered, which results from any latent defect, condition, sickness, or disease.



Marcus Harward: 704-322-0840

Brooke Harward: 704-322-9770

Jeff Martin: 910-379-9173

[info@macsvideo.com](mailto:info@macsvideo.com)

[www.MACSVideo.com](http://www.MACSVideo.com)

28978 Misenheimer Rd • Richfield, NC 28137