



MID-ATLANTIC CATTLE SALES

*A family owned and operated livestock video auction
with 30+ years of livestock marketing experience.*

FEBRUARY 17, 2026

TUESDAY AT 1:00 PM EST

WWW.MACSVIDEO.COM



****REVISED CATALOG
as of 2/16/26, 8:30 am****



Mid-Atlantic Cattle Sales, LLC
28978 Misenheimer Rd. Richfield, NC 28137
704-322-0840 • 704-322-9770
info@macsvideo.com

DVAuction
Broadcasting Real-Time Auctions

Video Sale INFORMATION

The cattle offered for sale are indicated on the following sale sheets and the online sale description as described to the MACS representatives by the owner. They are described by lot numbers, seller, location of cattle, numbers of head, estimated weight, management practices, delivery date, conditions of sale and delivery, and verified programs. Representatives for each load are listed under each respective lot. Every effort has been made to assure the correctness of this information but all announcements from the auctioneer or official auction staff prior to or during the sale shall take precedence over printed matter herein.

SALE DATE & TIME:

Tuesday - February 17, 2026

1:00 pm est. | 12:00 pm cst.

CONTACT:

Marcus Harward704-322-0840

Brooke Harward704-322-9770

www.MACSvideo.com

View catalog, videos, and additional updates online.

www.vimeo.com/macsvideo

All videos of sale cattle are posted directly on our video page listed above and on DV Auction

***MACS Sale Terms and Conditions are listed in this catalog and online. All loads will sell under these terms and conditions.**

Bidding Options

*We want to offer you the best opportunities we can to participate in our sales each month.
Below are three options for bidding on the sale.*

1. CONFERENCE CALL

After 12:45 eastern on sale day, you can call the auction number to listen and bid on the sale. To bid during the sale, you will use your buyer number to bid on the lot. Contact Marcus or Brooke prior to the sale to receive a buyer's number. *Please keep background noise to a minimum as we will have multiple people on the line. To mute your phone, press *1. To un-mute, press *1 again.*

CALL-IN NUMBER: 1-866-906-9888

PASSCODE: 9461720 #



2. DV AUCTION - INTERNET VIEWING AND BIDDING

To view the sale or bid online, visit www.DVAuction.com. Find the "Mid-Atlantic Cattle Sales (Richfield, NC)" sale and click on "Details." From this page you can view the catalog, videos, or log in to watch the sale. If you have an account, log in and view the sale. If you do not, you must create an account under the "Create New Account" tab in the upper left hand corner of the screen. You will need to confirm this account through your e-mail. *It is best to do this at least a day before the sale.*

You DO NOT have to be approved just to watch the sale but you will still need to create an account with DVAuction. To register for a buyer's number, call Brooke at 704-322-9770 prior to the sale to be approved to bid online.

3. ABSENTEE BIDDING

For people who can not view or bid on the sale at sale time, we have can handle closed bids in house and assist you with absentee bidding. Contact Marcus at 704-322-0840 for more information.

*"But God demonstrates his own love for us in this:
While we were still sinners, Christ died for us."*

ROMANS 5:8



LOT SUMMARY

TUESDAY, FEBRUARY 17, 2026

Video Sale Information

Pg 2

Table of Contents / Lot Summary

****REVISED LIST****

Pg 3

LOT NUMBER	LOAD NUMBER	TYPE	BASE WT.	PRODUCER	STATE	DELIVERY	PAGE NUMBER
Lot 6051	1 Load	Steers	675 lbs.	B6 Cattle	IN	February 23-27	Pg 4
Lot 6052	2 Loads	Steers	725 lbs.	B6 Cattle	IN	February 23-27	Pg 4
Lot 6053	1 Load	Steers	690 lbs.	Johnson & Owens Farm	NC	February 23-27	Pg 5
Lot 6054	1 Load	Steers	750 lbs.	Johnson & Owens Farm	NC	February 23-27	Pg 5
Lot 6055	1 Load	Steers	800 lbs.	Howey Ranch *GAP VNB NHTC	NC	February 23-27	Pg 6
Lot 6069*	1 Load	Steers	825 lbs.	HRW Farms *GAP	NC	February 23-27	Pg 6
Lot 6056	1 Load	Steers	825 lbs.	Johnson & Owens Farm	NC	February 23-27	Pg 7
Lot 6057	1 Load	Steers	825 lbs.	R & R Cattle *	GA	February 23-27	Pg 7
Lot 6058	1 Load	Steers	850 lbs.	Cox Land & Cattle *	NC	February 19-24	Pg 8
Lot 6059	1 Load	Steers	850 lbs.	Hannah Cattle Company	NC	February 23-27	Pg 8
Lot 6060	1 Load	Steers	880 lbs.	Satterwhite Farms *GAP VNB NHTC	SC	February 23-27	Pg 9
Lot 6061	2 Loads	Heifers	700 lbs.	B6 Cattle	IN	February 23-27	Pg 9
Lot 6062	1 Load	Heifers	670 lbs.	Johnson & Owens Farm	NC	February 23-27	Pg 10
Lot 6063	1 Load	Heifers	720 lbs.	Holt Farms & Johnson Farm	NC	February 23-27	Pg 10
Lot 6064	1 Load	Heifers	815 lbs.	Rocking H Cattle Co *GAP VNB NHTC CARE	NC	February 19-26	Pg 11
Lot 6070*	1 Load	Heifers	775 lbs.	HRW Farms *GAP	NC	February 23-27	Pg 11
Lot 6065	1 Load	Heifers	850 lbs.	Satterwhite Farms *GAP VNB NHTC	SC	March 2-6	Pg 12
Lot 6066	3 Loads	Heifers	860 lbs.	Donald Chriscoe Farm *	NC	February 19-27	Pg 12
Lot 6067	1 Load	22 Strs 30 Hfrs	800 lbs. 950 lbs.	Second Chance Farms *GAP VNB NHTC	NC	February 23-27	Pg 13
Lot 6071*	1 Load	34 Strs 40 Hfrs	675 lbs. 660 lbs.	HRW Farms *GAP	NC	February 23-27	Pg 13
Lot 6068	.65 Load	Heifers	775 lbs.	Gar-Mac Dairy (Beef-on-Dairy Heifers)	NC	February 24-27	Pg 14

Upcoming Video Sale Dates

Pg 15

NC Cattle Conference - February 20-21, 2026

Pg 16-17

Yon Family Farms Spring Bull & Female Sale - February 21, 2026

Pg 18

DV Auction Information

Pg 19

MACS Sale Terms & Conditions

Pgs 20-21

* = Affidavit Natural

GAP = GAP Certified

VNB = Verified Natural

NHTC = Non-Hormone Treated

CARE = BeefCARE Certified

ANGUS = AngusVerified Sires

Lot 6051 1 Load of STEERS

Price: \$ _____ Buyer # _____

B6 Cattle

Montezuma, IN - 10 miles E of Illinois state line; 65 miles West of Indianapolis

Backgrounded, Weaned

Base Wt: 675 lbs. Wt Stop: 700 lbs. (25#) Variance: 150 lbs.

Pickup Date: February 23-27 **Estimated Head Count** 72

Slide/Shrink: 2% shrink and slide \$17/cwt topside only

Weigh: Hauled 5 miles, weighed on certified truck scales

Notice to load: 48 hours **Weaned:** 90+ days

Colors: 80% blk/bwf, 15% ch-x, 5% red

Muscling: 90% #1, 10% #1.5

Nutrition: Bunk fed TMR (silage, distillers, chopped hay) with mineral on grass lots.

Vaccinations: Vista Once (2x), Covexin 8 (2x)

Dewormer: Ivermec (1x), Safeguard (1x)

Implants: None

Genetics: Commercial Angus-based.

Programs: No

Comments: Broke to bunks and waters. A very good group of calves that were purchased 90+ days ago, brought in, vaccinated and all weaned and running together on grass lots. A good load of medium flesh, backgrounded steers ready to go to grass or feed.

MACS Rep: Jason Busenbark, 317-372-2331

Programs:

PrimeVAC
BY MERCK ANIMAL HEALTH



Flesh: Medium

Frame: Medium

Lot 6052 2 Loads of STEERS

Price: \$ _____ Buyer # _____

B6 Cattle

Montezuma, IN - 10 miles E of Illinois state line; 65 miles West of Indianapolis

Backgrounded, Weaned

Base Wt: 725 lbs. Wt Stop: 750 lbs. (25#) Variance: 150 lbs.

Pickup Date: February 23-27 **Estimated Head Count** 134

Slide/Shrink: 2% shrink and slide \$15/cwt topside only

Weigh: Hauled 5 miles, weighed on certified truck scales

Notice to load: 48 hours **Weaned:** 90+ days

Colors: 80% blk/bwf, 15% ch-x, 5% red

Muscling: 90% #1, 10% #1.5

Nutrition: Bunk fed TMR (silage, distillers, chopped hay) with mineral on grass lots.

Vaccinations: Vista Once (2x), Covexin 8 (2x)

Dewormer: Ivermec (1x), Safeguard (1x)

Implants: None

Genetics: Commercial Angus-based.

Programs: No

Comments: Broke to bunks and waters. A very good group of calves that were purchased 90+ days ago, brought in, vaccinated and all weaned and running together on grass lots. Two good loads of medium flesh, backgrounded steers ready to go to grass or feed.

MACS Rep: Jason Busenbark, 317-372-2331

Programs:

PrimeVAC
BY MERCK ANIMAL HEALTH



Flesh: Medium

Frame: Medium

Lot 6053 1 Load of STEERS

Price: \$ _____ Buyer # _____

Johnson & Owens Farm

Snow Camp, NC - 20 miles southeast of Greensboro, NC

Backgrounded, Weaned



Base Wt: 690 lbs. Wt Stop: 720 lbs. (30#) Variance: 50 lbs.

Pickup Date: February 23-27 **Estimated Head Count** 70

Slide/Shrink: 2% shrink and slide \$17/cwt topside only

Weigh: Hauled 5 miles, 3 loads sorted, & weighed on certified MACS ground scales

Notice to load: 48 hours **Weaned:** 90+ days

Colors: 66 hd (90%) blk/bwf, 3 hd ch-x, 5 hd red/rwf

Muscling: 95% #1, 5% #1.5

Nutrition: Bunk fed a silage-based TMR with cottonseed & corn in bunks with free choice mineral, pasture, and hay.

Vaccinations: Vista Once (2x), NasalGen 3 PMH (1x), Vision 7 (1x), Vision 7 20/20 (1x), Endovac Beef (2x)

Dewormer: Safeguard, Ivomec Pour-On & Inject. **Implants:** None

Genetics: Commercial Angus-based.

Programs: No

Comments: Broke to bunks and waters. A very good group of background steers that were purchased as 4 weights from local sale barns, triple vaccinated, and backgrounded on pasture. 2 head with a white spot in their eye. 3 loads (200+ head) have been running together and were individually weighed on February 10th to sort three good loads. Need to load all 3 steer loads the same day, will be brought in on load out day, sorted, then weighed.

MACS Rep: Marcus Harward, 704-322-0840

Programs:



Flesh: Medium

Frame: Medium

Lot 6054 1 Load of STEERS

Price: \$ _____ Buyer # _____

Johnson & Owens Farm

Snow Camp, NC - 20 miles southeast of Greensboro, NC

Backgrounded, Weaned



Base Wt: 750 lbs. Wt Stop: 780 lbs. (30#) Variance: 60 lbs.

Pickup Date: February 23-27 **Estimated Head Count** 65

Slide/Shrink: 2% shrink and slide \$15/cwt topside only

Weigh: Hauled 5 miles, 3 loads sorted, & weighed on certified MACS ground scales

Notice to load: 48 hours **Weaned:** 90+ days

Colors: 60 hd (88%) blk/bwf, 6 hd ch-x, 2 hd red/rwf

Muscling: 95% #1, 5% #1.5

Nutrition: Bunk fed a silage-based TMR with cottonseed & corn in bunks with free choice mineral, pasture, and hay.

Vaccinations: Vista Once (2x), NasalGen 3 PMH (1x), Vision 7 (1x), Vision 7 20/20 (1x), Endovac Beef (2x)

Dewormer: Safeguard, Ivomec Pour-On & Inject. **Implants:** None

Genetics: Commercial Angus-based.

Programs: No

Comments: Broke to bunks and waters. A very good group of background steers that were purchased as 4 weights from local sale barns, triple vaccinated, and backgrounded on pasture. 2 head with a white spot in their eye. 3 loads (200+ head) have been running together and were individually weighed on February 10th to sort three good loads. Need to load all 3 steer loads the same day, will be brought in on load out day, sorted, then weighed.

MACS Rep: Marcus Harward, 704-322-0840

Programs:



Flesh: Medium

Frame: Medium

Lot 6055 1 Load of STEERS

Price: \$ _____ Buyer # _____

Howey Ranch (Frank Howey)

Troy, NC - 25 miles south of Asheboro, NC

Home-Raised, GAP-4, Verified Natural, NHTC, Backgrounded, Weaned

Base Wt: 800 lbs. Wt Stop: 830 lbs. (30#) Variance: 150 lbs.

Pickup Date: February 23-27 **Estimated Head Count** 61

Slide/Shrink: 2% shrink and slide \$15/cwt topside only

Weigh: Certified MACS ground scales at farm

Notice to load: 72 hours **Weaned:** 90+ days

Colors: 45 hd (72%) blk/bwf, 12 hd red/rwf, 6 hd char-x
15-20% Brah-X (no excessive ear)

Muscling: 95% #1, 5% #1.5

Nutrition: 10-12% ph/pd of 12% pellet feed with free choice pasture, hay, and VitaFerm GainSmart minerals and stress tubs.

Vaccinations: Vista Once (1x), Vista 5 (1x), Vision 7 20/20 spur (2x), VitaCharge Drench

Dewormer: Cydectin, Safeguard

Implants: None

Genetics: 50% or more Angus. Primarily sired by Red Angus and Angus bulls with a few SimAngus bulls. Bulls are high-growth bulls primarily from Bieber, Pieper, EBS, and Black Grove. Out of Angus-based and crossbred cows. ~15-20% will show 1/16 to 1/4 ear.

Programs: GAP-4; IMI Verified Natural; NHTC; Source & Age; Seller Affidavit

Comments: Broke to bunks and waters. A very good set of high-growth steers that will finish as a big set of feeders. Calves are out of excellent Red Angus and Angus genetics in both the bulls and cows. Calves have been on the VitaFerm program with minerals, drench, and stress tubs. They are all natural and can be EID tagged for verified natural and NHTC with IMI Global. The GAP-4 certificate can transfer at no cost to buyer. (GAP#24858, Exp 3/21/26). Steers were sorted and weighed on February 13th and should be very close on their weights.

MACS Rep: Marcus Harward, 704-322-0840

Programs:

Natural
AFFIDAVIT

global animal
PARTNERSHIP

imi

VERIFIED

NHTC

USDA

PrimeVAC
BY MERCK ANIMAL HEALTH

VITAFERM
g

BIEBER
EBS FARMS

Black Grove
Quality That Counts



Flesh: Medium

Frame: 90% Medium, 10% Large

Lot 6069 1 Load of STEERS

Price: \$ _____ Buyer # _____

HRW Farms #2 (Summers Farm)

Thurmond, NC - 10 miles north of Elkin, NC

Home-Raised, GAP-4, Natural, Backgrounded, Weaned

Base Wt: 825 lbs. Wt Stop: 860 lbs. (35#) Variance: 125 lbs.

Pickup Date: February 23-27 **Estimated Head Count** 59

Slide/Shrink: 2% shrink and slide \$15/cwt topside only

Weigh: Certified ground scales at farm

Notice to load: 48 hours **Weaned:** 90+ days

Colors: 65% blk/bwf, 30% ch-x, 5% red

Muscling: 95% #1, 5% #1.5

Nutrition: Bunk fed TMR of corn silage and DDGs with mineral pack and hay.

Vaccinations: Bovi-Shield Gold One Shot (2x), Inforce 3 (1x), Ultrabac 7 (2x), Mycoplasma (1x), Pinkeye vaccine (1x)

Dewormer: LongRange, Safeguard

Implants: None

Genetics: Sired by primarily Angus bulls from EBS Farms or a couple Charolais and SimAngus bulls out of crossbred cows. All chars are crossbred with a black nose or gray/yellow, no purebred pink-noses.

Programs: GAP-4; Seller Affidavit Natural

Comments: Broke to bunks and waters. A fancy set of steers that were weaned and backgrounded at the Summers Farm location. Home-raised, high-growth steers with Angus and Charolais or Simmental genetics. Reputational calves from a very good program. Steers have been weaned for 90+ days, and mostly within just a 100 lbs. weight variance. GAP-4 certificate can transfer at no cost to buyer. (Recertification pending, audit date is 2/24/26).

MACS Rep: Jimmy Dagenhart, 704-425-3587

Programs:

Natural
AFFIDAVIT

global animal
PARTNERSHIP

SelectVAC

EBS FARMS

Black Grove
Quality That Counts



Flesh: Medium

Frame: Medium

Lot 6056 1 Load of STEERS

Price: \$ _____ Buyer # _____

Johnson & Owens Farm

Snow Camp, NC - 20 miles southeast of Greensboro, NC

Backgrounded, Weaned



Base Wt: 825 lbs. Wt Stop: 855 lbs. (30#) Variance: 175 lbs.

Pickup Date: February 23-27 **Estimated Head Count** 59

Slide/Shrink: 2% shrink and slide \$15/cwt topside only

Weigh: Hauled 5 miles, 3 loads sorted, & weighed on certified MACS ground scales

Notice to load: 48 hours **Weaned:** 90+ days

Colors: 56 hd (90%) blk/bwf, 2 hd ch-x, 4 hd red/rwf

Muscling: 95% #1, 5% #1.5

Nutrition: Bunk fed a silage-based TMR with cottonseed & corn in bunks with free choice mineral, pasture, and hay.

Vaccinations: Vista Once (2x), NasalGen 3 PMH (1x), Vision 7 (1x), Vision 7 20/20 (1x), Endovac Beef (2x)

Dewormer: Safeguard, Ivomec Pour-On & Inject. **Implants:** None

Genetics: Commercial Angus-based.

Programs: No

Comments: Broke to bunks and waters. A very good group of background steers that were purchased as 4 weights from local sale barns, triple vaccinated, and backgrounded on pasture. 3 head with a white spot in their eye. 3 loads (200+ head) have been running together and were individually weighed on February 10th to sort three good loads. Need to load all 3 steer loads the same day, will be brought in on load out day, sorted, then weighed.

MACS Rep: Marcus Harward, 704-322-0840

Programs:



Flesh: Medium

Frame: Medium

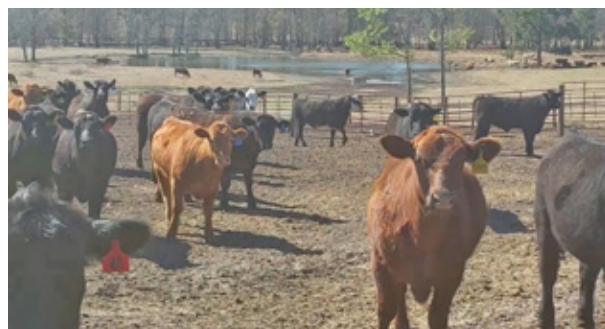
Lot 6057 1 Load of STEERS

Price: \$ _____ Buyer # _____

R & R Cattle (Ronnie Johnson)

Millen, GA - 30 miles northwest of Statesboro, GA

Home-Raised, Affidavit Natural, Backgrounded, Weaned



Base Wt: 825 lbs. Wt Stop: 855 lbs. (30#) Variance: 200 lbs.

Pickup Date: February 23-27 **Estimated Head Count** 59

Slide/Shrink: 2% shrink and slide \$12/cwt topside only

Weigh: Hauled 10 miles, weighed on certified truck scales

Notice to load: 72 hours **Weaned:** 100+ days

Colors: 85% blk/bwf, 2 hd char-x, 7 hd red/rwf

Muscling: 90% #1, 10% #1.5

Nutrition: Bunk fed TMR (corn silage, corn gluten, WB Flemming mineral) with free choice hay.

Vaccinations: Pyramid 5 Presponse (2x), Cavalry 9 (2x), Autogenous pinkeye (1x) (July & October)

Dewormer: LongRange, Synanthic **Implants:** None

Genetics: 60% or more Angus. Sired by Yon Family Farms Angus bulls or Beiber Red Angus bulls and out of Angus or Charolais-X cows.

Programs: Seller Affidavit Natural

Comments: Broke to bunks and waters. A very good set of yearling steers, weaned in early October and double vaccinated (vaccinations given by contractor). Calves meet natural certifications and will sign buyer's natural affidavits. A good set of steers with just a medium flesh and selling with a 30# weight stop.

MACS Rep: Romaine Cartee, 912-531-0580

Programs:



Lot 6058 1 Load of STEERS

Price: \$ _____ Buyer # _____

Cox Land & Cattle (Will Cox)

Coleridge, NC - 15 miles southeast of Asheboro, NC

Home-Raised & Purchased, Affidavit Natural, Backgrounded, Weaned

Base Wt: 850 lbs. Wt Stop: 880 lbs. (30#) Variance: 125 lbs.

Pickup Date: February 19-24 **Estimated Head Count** 57

Slide/Shrink: 2% shrink and slide \$15/cwt topside only

Weigh: Certified MACS ground scales at farm

Notice to load: 48 hours **Weaned:** 120+ days

Colors: 56 hd blk/bwf, 3 hd ch-x, 1 hd red

Muscling: 95% #1, 5% #1.5

Nutrition: Bunk fed a TMR of corn silage, DDG, wet corn gluten, chopped hay, with a balancer mineral pack.

Vaccinations: Vista Once (1x), Vista 5 (1x), NasalGen 3 PMH (1x), Vision 7 somnus (1x), Vision 7 20/20 (1x), Endovac Beef (2x)

Dewormer: Safeguard (1x), Pour-On (2x) **Implants:** None

Genetics: 65%+ Angus. Sired by Angus bulls out of Angus-X cows.

Programs: Seller Affidavit Natural

Comments: Broke to bunks and waters. A good load of northern-type feeding steers that are weaned 120+ days and all-natural. Buyer will sign all-natural affidavits as needed. Part of these are home-raised and the rest were locally purchased to make a full load. All have been running together since weaning. There are 60 head for the load to make about 51,000 lbs.

MACS Rep: Marcus Harward, 704-322-0840

Programs:

Natural
AFFIDAVIT

PrimeVAC
BY MERCK ANIMAL HEALTH



Flesh: Medium

Frame: Medium

Lot 6059 1 Load of STEERS

Price: \$ _____ Buyer # _____

Hannah Cattle Company (Matt Hannah)

China Grove, NC - 30 miles north of Charlotte, NC

Backgrounded, Weaned, BQA Certified

Base Wt: 850 lbs. Wt Stop: 875 lbs. (25#) Variance: 150 lbs.

Pickup Date: February 23-27 **Estimated Head Count** 57

Slide/Shrink: 2% shrink and slide \$15/cwt topside only

Weigh: Certified MACS ground scales at farm

Notice to load: 48 hours **Weaned:** 120+ days

Colors: 95% blk/bwf, 5% ch-x

Muscling: 95% #1, 5% #1.5

Nutrition: Bunk fed silage based TMR with free choice mineral, pasture, and hay.

Vaccinations: Vista Once (1x), Vista 5 (1x), Nasalgen 3 (1x), Cavalry 9 (2x)

Dewormer: Safeguard (2x), Cydectin (2x) **Implants:** Ralgro (1x)

Genetics: Commercial Angus-based.

Programs: No

Comments: Broke to bunks and waters. A very good set of steers that were put together from local producers and sale barns, triple vaccinated, and backgrounded on pasture and fed a silage based ration. A very good set of reputational steers ready to go to feed.

MACS Rep: Jimmy Dagenhart, 704-425-3587

Programs:

PrimeVAC
BY MERCK ANIMAL HEALTH



Flesh: Medium

Frame: Medium

Lot 6060 1 Load of STEERS

Price: \$ _____ Buyer # _____

Satterwhite Farms LLC

Newberry, SC - 40 miles northwest of Columbia, SC

Home-Raised, GAP-4, Verified Natural, NHTC, Backgrounded, Weaned

Base Wt: 880 lbs. Wt Stop: 910 lbs. (30#) Variance: 150 lbs.

Pickup Date: February 23-27 **Estimated Head Count** 55

Slide/Shrink: 2% shrink and slide \$15/cwt topside only

Weigh: Certified MACS ground scales at farm

Notice to load: 48 hours **Weaned:** 90+ days

Colors: 100% blk/bwf

Muscling: 95% #1, 5% #1.5

Nutrition: Bunk fed 25-30# TMR silage, gluten, soyhulls, soybean meal, and Multikare mineral with free choice pasture and hay.

Vaccinations: Vista Once (1x), Vista 5 (1x), Vision 7 somnus (2x)

Dewormer: LongRange (1x), Safeguard (1x) **Implants:** None

Genetics: 50-75% Angus. Sired by Yon Angus & SimAngus bulls out of Angus, Red Angus, and SimAngus-X cows.

Programs: GAP-4; BeefTraxx Verified Natural; NHTC; Source & Age; Seller Affidavit

Comments: Broke to bunks and waters. A fancy, reputational set of docile yearlings. Calves born last fall from an excellent program. Reputational calves that meet natural certifications and are verified natural and NHTC through BeefTraxx. GAP certificate Step 4 can transfer at no cost to buyer. (GAP #24693, Exp 5/1/26)

MACS Rep: Austin Landreth, 864-484-7153

Programs:

Natural
AFFIDAVIT

global animal
PARTNERSHIP

BEEF
TRAXX

NHTC
CERTIFIED

USDA
ASS & SOURCE
VERIFIED

PrimeVAC
BY MERCK ANIMAL HEALTH

YON
FAMILY FARMS



Flesh: Medium

Frame: Medium

Lot 6061 2 Loads of HEIFERS

Price: \$ _____ Buyer # _____

B6 Cattle

Montezuma, IN - 10 miles E of Illinois state line; 65 miles West of Indianapolis

Backgrounded, Weaned

Base Wt: 700 lbs. Wt Stop: 725 lbs. (25#) Variance: 150 lbs.

Pickup Date: February 23-27 **Estimated Head Count** 139

Slide/Shrink: 2% shrink and slide \$15/cwt topside only

Weigh: Hauled 5 miles, weighed on certified truck scales

Notice to load: 48 hours **Weaned:** 90+ days

Colors: 80% blk/bwf, 15% ch-x, 5% red

Muscling: 90% #1, 10% #1.5

Nutrition: Bunk fed TMR (silage, distillers, chopped hay) with mineral on grass lots.

Vaccinations: Vista Once (2x), Covexin 8 (2x)

Dewormer: Ivermec (1x), Safeguard (1x) **Implants:** None

Genetics: Commercial Angus-based.

Programs: No

Heifers: Open, not palpated.

Comments: Broke to bunks and waters. A very good group of calves that were purchased 90+ days ago, brought in, vaccinated and all weaned and running together on grass lots. Two good loads of medium flesh, backgrounded heifers ready to go to grass or feed.

MACS Rep: Jason Busenbark, 317-372-2331

Programs:

PrimeVAC
BY MERCK ANIMAL HEALTH

Beef
Quality
Assurance



Flesh: Medium

Frame: Medium

Lot 6062 1 Load of HEIFERS

Price: \$ _____ Buyer # _____

Johnson & Owens Farm

Snow Camp, NC - 20 miles southeast of Greensboro, NC

Backgrounded, Weaned



Base Wt: 670 lbs. Wt Stop: 700 lbs. (30#) Variance: 100 lbs.

Pickup Date: February 23-27 **Estimated Head Count** 72

Slide/Shrink: 2% shrink and slide \$17/cwt topside only

Weigh: Hauled 5 miles, weighed on certified MACS ground scales

Notice to load: 48 hours **Weaned:** 90+ days

Colors: 64 hd (90%) blk/bwf, 4 hd ch-x, 4 hd red/rwf

Muscling: 95% #1, 5% #1.5

Nutrition: Bunk fed a silage-based TMR with cottonseed & corn in bunks with free choice mineral, pasture, and hay.

Vaccinations: Vista Once (2x), NasalGen 3 PMH (1x), Vision 7 (1x), Vision 7 20/20 (1x), Endovac Beef (2x)

Dewormer: Safeguard, Ivomec Pour-On & Inject. **Implants:** None

Genetics: Commercial Angus-based.

Programs: No

Heifers: Open, not palpated, given 2 rounds of Estrumate.

Comments: Broke to bunks and waters. A very good group of background heifers that were purchased as 4 weights from local sale barns, triple vaccinated, and backgrounded on pasture. 4 head with a white spot in their eye. Heifers were individually weighed on February 11th and should be very close on weights. **Can not load on same day as 3 steer loads selling earlier in the sale.

MACS Rep: Marcus Harward, 704-322-0840

Programs:



Flesh: Medium

Frame: Medium

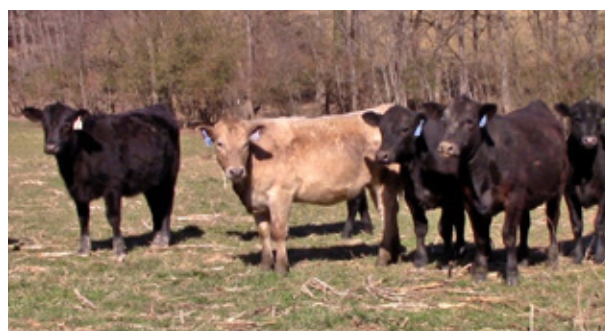
Lot 6063 1 Load of HEIFERS

Price: \$ _____ Buyer # _____

Holt Farms & Johnson Farm

Liberty, NC - 20 miles southeast of Greensboro, NC

Backgrounded, Weaned



Base Wt: 720 lbs. Wt Stop: 750 lbs. (30#) Variance: 170 lbs.

Pickup Date: February 23-27 **Estimated Head Count** 67

Slide/Shrink: 2% shrink and slide \$15/cwt topside only

Weigh: Hauled 5 miles, weighed on certified MACS ground scales

Notice to load: 48 hours **Weaned:** 90+ days

Colors: 59 hd (88%) blk/bwf, 4 hd ch-x, 4 hd red/rwf

Muscling: 95% #1, 5% #1.5

Nutrition: Bunk fed a silage-based TMR with cottonseed & corn in bunks with free choice mineral, pasture, and hay.

Vaccinations: Vista Once (2x), NasalGen 3 PMH (1x), Vision 7 (1x), Vision 7 20/20 (1x)

Dewormer: Safeguard, Ivomec Pour-On & Inject. **Implants:** None

Genetics: Commercial Angus-based.

Programs: No

Heifers: Open, not palpated, given 2 rounds of Estrumate.

Comments: Broke to bunks and waters. Purchased as 4 weights from local sale barns and backgrounded on pasture. Coming from two neighboring farms and brought together the morning of load out. 4 head have a spot in their eye. A fancy set of heifers that are ready to go to grass or feed. **Would like to load same day as the Johnson/Owens load.

MACS Rep: Marcus Harward, 704-322-0840

Programs:



Flesh: Medium & Med/Light

Frame: Medium

Lot 6070 1 Load of HEIFERS

Price: \$ _____ Buyer # _____

HRW Farms #1

Thurmond, NC - 10 miles north of Elkin, NC

Home-Raised, GAP-4, Natural, Backgrounded, Weaned

Base Wt: 775 lbs. Wt Stop: 810 lbs. (35#) Variance: 150 lbs.



Pickup Date: February 23-27 **Estimated Head Count** 63

Slide/Shrink: 2% shrink and slide \$15/cwt topside only

Weigh: Certified ground scales at farm

Notice to load: 48 hours **Weaned:** 75+ days

Colors: 30% blk/bwf, 65% ch-x, 5% red/rwf

Flesh: Medium

Muscling: 95% #1, 5% #1.5

Frame: Medium

Nutrition: Bunk fed 15# ph/pd of 14% feed and silage with free choice mineral and hay.

Vaccinations: Bovi-Shield Gold One Shot (1x), Bovi-Shield Gold 5 (1x), Alpha 7 (2x), Vision 7 20/20 (1x)

Dewormer: Dectomax

Implants: None

Genetics: Sired by Angus, Charolais, and SimAngus bulls out of crossbred cows. All chars are crossbred with a black nose or gray/yellow. Might be a couple light-nosed but are all crossbred calves.

Programs: GAP-4; Seller Affidavit

Heifers: Vet palpated, guaranteed open.

Comments: Broke to bunks and waters. Weaned & backgrounded at the Thurmond Farm location. Home-raised, high-growth heifers with Charolais and Angus genetics that will grow and make a big set of feeders. Reputational calves from a very good program. These are winter born calves weaned 75+ days. GAP-4 certificate can transfer at no cost to buyer. (Recertification pending, audit date is 2/24/26).

MACS Rep: Jimmy Dagenhart, 704-425-3587

Programs:

Natural
AFFIDAVIT

global animal
PARTNERSHIP

SelectVAC



Lot 6064 1 Load of HEIFERS

Price: \$ _____ Buyer # _____

Rocking H Cattle Company

Norwood, NC - 40 miles east of Charlotte, NC

Home-Raised, GAP-4, Verified Natural, NHTC, Backgrounded, Weaned

Base Wt: 815 lbs. Wt Stop: 840 lbs. (25#) Variance: 150 lbs.

Picture and video will be posted by Monday afternoon

Pickup Date: February 19-26 **Estimated Head Count** 60

Slide/Shrink: 2% shrink and slide \$15/cwt topside only

Weigh: Certified ground scales at farm

Notice to load: 24-48 hours **Weaned:** 120+ days

Colors: 56 hd (93%) blk/bwf, 4 hd ch-x

Flesh: Medium

Muscling: 90% #1, 10% #1.5

Frame: Medium

Nutrition: Bunk fed TMR of corn silage, ground hay, soyhulls, wet corn gluten, corn, and mineral mixed in ration.

Vaccinations: October: Vista Once, Vision 7. November: Vista 5, Vision 7 somnus. January: Vista Once, Vision 7

Dewormer: Safeguard (2x), LongRange, Pour On

Implants: None

Genetics: 50-75% Angus. Sired by Angus & SimAngus bulls and out of Angus-based, SimAngus, and Char-X cows. Majority of the sires have EPDs in the top 30% or better for growth, marbling, and ribeye.

Programs: GAP-4; BeefCare; IMI Verified Natural; NHTC; Source & Age; Affidavit

Heifers: Vet palpated, guaranteed open.

Comments: Broke to bunks and waters. BQA Certified. A good set of Winter 2024/2025 born heifers with several years of high-performing genetics behind them. Past years these calves have finished out as high percentage Choice and Prime. Have been double vaccinated and were brought in from several pastures and weaned together for 60+ days. Natural certifications are able to transfer at no cost to the buyer. (GAP#25458, Exp 7/8/26).

MACS Rep: Catherine Edwards, 704-550-7920

Programs:

Natural
AFFIDAVIT

global animal
PARTNERSHIP

imi



PrimeVAC
BY MERCK ANIMAL HEALTH

HARWARD
Select Farms



Lot 6065 1 Load of HEIFERS

Price: \$ _____ Buyer # _____

Satterwhite Farms LLC

Newberry, SC - 40 miles northwest of Columbia, SC

Home-Raised, GAP-4, Verified Natural, NHTC, Backgrounded, Weaned



Base Wt: 850 lbs. Wt Stop: 880 lbs. (30#) Variance: 150 lbs.

Pickup Date: March 2-6 **Estimated Head Count** 57

Slide/Shrink: 2% shrink and slide \$15/cwt topside only

Weigh: Certified MACS ground scales at farm

Notice to load: 48 hours **Weaned:** 90+ days

Colors: 100% blk/bwf

Flesh: Medium

Muscling: 95% #1, 5% #1.5

Frame: Medium

Nutrition: Bunk fed 25-30# TMR silage, gluten, soyhulls, soybean meal, and Multikare mineral with free choice pasture and hay.

Vaccinations: Vista Once (1x), Vista 5 (1x), Vision 7 somnus (2x)

Dewormer: LongRange (1x), Safeguard (1x) **Implants:** None

Genetics: 50-75% Angus. Sired by Yon Angus & SimAngus bulls out of Angus, Red Angus, and SimAngus-X cows.

Programs: GAP-4; BeefTraxx Verified Natural; NHTC; Source & Age; Seller Affidavit

Heifers: Open, not palpated.

Comments: Broke to bunks and waters. A fancy, reputational set of docile yearlings. Calves were born last fall and winter from an excellent program. Reputational calves that meet natural certifications and are verified natural and NHTC through BeefTraxx. GAP certificate Step 4 can transfer at no cost to buyer. (GAP #24693, Exp 5/1/26)

MACS Rep: Austin Landreth, 864-484-7153

Programs:



Lot 6066 3 Loads of HEIFERS

Price: \$ _____ Buyer # _____

Donald Chriscoe Farm

Asheboro, NC - 40 miles south of Greensboro, NC

Affidavit Natural, Backgrounded, Weaned



Base Wt: 860 lbs. Wt Stop: 885 lbs. (25#) Variance: 150 lbs.

Pickup Date: February 19-27 **Estimated Head Count** 169

Slide/Shrink: 2% shrink and slide \$15/cwt topside only

Weigh: Certified ground scales at farm

Notice to load: 48 hours **Weaned:** 120+ days

Colors: 86% (~145 hd) blk/bwf, 13 hd ch-x, 11 hd red/rwf

Flesh: Medium

Muscling: 95% #1, 5% #1.5

Frame: Medium

Nutrition: Bunk fed haylage and TMR (wet corn gluten, cotton) with access to mineral and hay.

Vaccinations: Vista 5 (2x), Nuplura (1x), Vision 7 20/20 (1x), Ocuguard Pinkeye (1x)

Dewormer: Ivomec Inject. (2x) **Implants:** None

Genetics: Commercial Angus-based. Mainly sired by Angus and SimAngus bulls.

Programs: Seller Affidavit Natural

Heifers: Palpated, guaranteed open

Comments: Broke to bunks and waters. Reputational calves purchased from local producers and backgrounded at Chriscoe's for well over 100 days. Owner affidavit natural - signed natural affidavits from original producers that will transfer with the cattle. Selling three loads as one lot.

MACS Rep: Marcus Harward, 704-322-0840

Programs:



Lot 6067 0.95 Load of STRS/HFRS

Price: \$ _____ Buyer # _____

Second Chance Farms Inc

Pink Hill, NC - 30 miles southeast of Goldsboro, NC

**Home-Raised, GAP-4, Verified Natural, Backgrounded, Weaned****~22 Steers Wt: 800 lbs. Wt. Stop: 835 lbs. (35#) Variance: 175 lbs.****~30 Hfrs Wt: 950 lbs. Wt. Stop: 985 lbs. (35#) Variance: 300 lbs.****Heifers sell \$30/cwt back****Pickup Date:** February 23-27**Slide/Shrink:** 1% shrink and slide \$12/cwt topside only**Weigh:** Hauled 15 miles, weighed on certified truck scales**Notice:** 48 hours**Weaned:** 120+ days**Colors:** 50 hd blk/bwf, 2 hd ch-x**Muscling:** 100% #1**Nutrition:** Bunk fed TMR (baleage, soyhulls, wet corn gluten) with calcium and minerals and on grass lots.**Vaccinations:** Vista Once (2x), Vision 7 (2x), Multimin (1x)**Dewormer:** Synanthic (1x), Dectomax Inject (1x)**Implants:** None**Genetics:**

50-60% Angus, 40-50% Sim. Sired by SimAngus bulls from Gibbs Farms or Angus bulls from Yon Family Farms, out of Angus-based and SimAngus cows. Sires average in the top 25% or better for Terminal Index and \$Beef, Marbling, and Yearling Weight. Genetics include Triple Crown, Mountaineer, Stonewall, Statement, Nighthawk, Xceed, Kenworth, and more. Tested and rank as Neogen Igenity Elite.

Programs: GAP-4; BeefTraxx Verified Natural; NHTC; Source & Age; Seller Affidavit**Preg-checked:** Vet palpated, guaranteed open.**Comments:** Broke to bunks and waters. An excellent, fancy set of calves with top genetics. Calves are EID tagged and natural certifications are complete and will transfer at no cost. GAP-4 certified (GAP#24820; Exp 5/2/26). Recent calf crops have averaged 95% Prime & Choice. An excellent set of feeding genetics. Tested and rank as Neogen Igenity Elite. September-December 2024 born heifers, steers born December-January.**MACS Rep:** Jeff Martin, 910-379-9173**Flesh:** Medium**Frame:** Medium**Igenity**
Terminal**Programs:****Natural**
AFFIDAVIT**global animal**
PARTNERSHIP**BEEF**
TRAXX**NHTC**
CERTIFIED**YON**
FAMILY FARMS**IBBS**
FARMS**PrimeVAC**
BY MERCK ANIMAL HEALTH**MULTIMIN**
50**Quality That Counts****Lot 6071 1 Load of STRS/HFRS**

Price: \$ _____ Buyer # _____

HRW Farms #2 (Summers Farm)

Thurmond, NC - 10 miles north of Elkin, NC

Home-Raised, GAP-4, Natural, Backgrounded, Weaned**~34 Steers Wt: 675 lbs. Wt. Stop: 710 lbs. (35#) Variance: 150 lbs.****~40 Hfrs Wt: 660 lbs. Wt. Stop: 695 lbs. (35#) Variance: 150 lbs.****Heifers sell \$15/cwt back****Pickup Date:** February 23-27**Slide/Shrink:** 2% shrink and slide \$17/cwt topside only**Weigh:** Certified ground scales at farm**Notice:** 48 hours**Weaned:** 75+ days**Colors:** 65 hd (88%) blk/bwf, 6 hd ch-x, 3 hd red**Muscling:** 95% #1, 5% #1.5**Nutrition:** Bunk fed TMR of corn silage and DDGs with mineral pack and hay.**Vaccinations:** Bovi-Shield Gold One Shot (2x), Inforce 3 (1x), Ultrabac 7 (2x), Mycoplasma (1x), Pinkeye vaccine (1x)**Dewormer:** LongRange, Safeguard**Implants:** None**Genetics:** Sired by primarily Angus bulls from EBS Farms or a couple Charolais and SimAngus bulls out of crossbred cows. All chars are crossbred with a black nose or gray/yellow, no purebred pink-noses.**Programs:** GAP-4; Seller Affidavit Natural**Preg-checked:** Vet palpated, guaranteed open.**Comments:** Broke to bunks and waters. A fancy set of steers and heifers that were weaned and backgrounded at the Summers Farm location. Home-raised, high-growth steers with Angus and Charolais or Simmental genetics. Calves are primarily spring-born steers and heifers. GAP-4 certificate can transfer at no cost to buyer. (Recertification pending, audit date is 2/24/26).**MACS Rep:** Jimmy Dagenhart, 704-425-3587**Flesh:** Medium**Frame:** Medium**Programs:****Natural**
AFFIDAVIT**global animal**
PARTNERSHIP**SelectVAC****EBS**
FARMS**Quality That Counts**

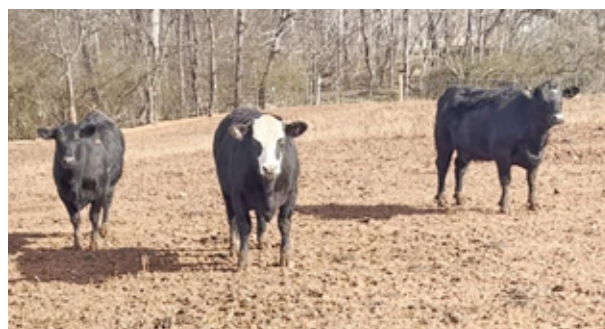
Lot 6068 0.65 Load of HEIFERS

Price: \$ _____ Buyer # _____

Gar-Mac Dairy

Harmony, NC - 10 miles northeast of Statesville, NC

Home-Raised, Backgrounded, Weaned, BEEF-ON-DAIRY HEIFERS



Base Wt: 775 lbs. Wt Stop: 810 lbs. (35#) Variance: 300 lbs.

Pickup Date: February 24-27 **Estimated Head Count** 40

Slide/Shrink: 2% shrink and slide \$15/cwt topside only

Weigh: Hauled 10 miles, certified ground scales at Harward Livestock Market (Turnersburg)

Notice to load: 48 hours **Weaned:** 200+ days

Colors: 100% black/bwf Angus-x-Holstein

Muscling: 100% #1.5

Nutrition: Bunk fed silage based TMR with mineral and free-choice hay.

Vaccinations: Vista Once (1x), Vista 5 (2x), Vision 7 (3x), Protivity (2x)

Dewormer: Yes **Implants:** None

Genetics: 50% or more Angus. All heifers are sired by the Angus AI-sire SS Brickyard from Genex with top 30% Marbling, Ribeye, and \$Beef EPDs and are out of Holstein cows.

Programs: EID Tagged. PI tested negative. Not natural but not implanted.

Heifers: Open, not palpated. Never exposed to any bulls.

Comments: Broke to bunks and waters. A good set of beef-on-dairy heifers that have been triple vaccinated and under a good herd health and nutrition program that have also been PI-tested negative. Heifers are all AI-sired and out of Holstein cows from Gar-Mac Dairy. 40-45 of the biggest heifers from the video will be sorted out for the load (smaller heifers will not go). This will be a partial load at approximately 32,000 lbs.

MACS Rep: Jimmy Dagenhart, 704-425-3587

Programs:



Flesh: Medium

Frame: 50% Medium, 50% Large



HARWARD BROTHERS LIVESTOCK MARKET

2207 Turnersburg Hwy. Statesville, NC

Phone: 704-546-2692

WWW.TURNERSBURGSTOCKYARDNC.COM

STANLY COUNTY LIVESTOCK MARKET

13215 Indian Mound Rd. Norwood, NC

Phone: 704-474-7681

WWW.NORWOODSTOCKYARDNC.COM

Weekly Sales - Every Monday at 11:30 am

Take in livestock on Sunday (12 pm - 7 pm) and Monday

3:00 pm - Holstein & Dairy Influenced Feeder Cattle

6:00 pm - Small Animal Sale (Baby Calves, Goats, Sheep)

Marcus Harward • 704-322-0840

Brooke Harward • 704-322-9770

Watch the sales live every week!

Weekly Sales - Every Wednesday at 10:30 am

Take in livestock on Tuesday (10 am - 8 pm) and Wednesday

Graded Feeder Calf Sale Schedule posted online at
www.norwoodfeederalf.com

Marcus Harward • 704-322-0840

Catherine Edwards • 704-550-7920

Will Edwards • 919-449-8064

CATCHING, HAULING, AND CATTLE WORK SERVICES AVAILABLE



MAC-VAC FEEDER CALVES

A marketing program available at both sale locations for vaccinated steers and heifers. Calves that meet vaccination requirements and have the sale tag in their ear will sell in the MAC-VAC portion of the sale at the beginning of the feeder calf sale each week. For more information, please visit www.norwoodfeederalf.com or contact any of the numbers listed here.

Catching, hauling, and cattle work services:

For hauling services, contact Marcus at 704-322-0840.

If you need help working your cattle, contact Marcus Harward at 704-322-0840 or Chuck Doolittle at 704-221-1447 for more information.

MID-ATLANTIC CATTLE SALES

WWW.MACSVIDEO.COM



UPCOMING SALES

March 3
March 17
April 7
April 21

May 5
May 19
June 2
June 16

Our motto - Working hard for you today and every day!

FROM PASTURE TO PROFIT

Practical Management for Profitable Cattle Operations



Friday, February 20, 2026

7:30 a.m.	Board of Directors Breakfast	(Hickory 3)
8:00 a.m.	Registration & Trade Show Open	(Lobby)
8:45 a.m.	Welcome	(Hickory 4)
9:00-9:45 a.m.	Opening Session	
	• Efficiency & Genomics in Commercial Cattle	
10:00 a.m.	Morning Break	(Hickory 1&2)
	• Hay Sampling Demonstration	
10:15-11:15 a.m.	Breakout Sessions	
	• Animal Health & Production	Dr. Tomas Gonzalez, N.C. State University CVM (Conover 1)
	• Nutrition & Pasture Management	Dr. Maggie Justice, Auburn University (Conover 2)
	• Market Outlook & Risk Management	Dr. Charles Martinez, University of Tennessee (Conover 3)
11:45 a.m.	Awards Luncheon	(Hickory 3&4)
	• Keynote Address	
1:30 p.m.	Trade Show Continues	Russ Useton, Region II Federation (Hickory 1&2)
2:00 p.m.	Committee Meetings (Everyone Welcome)	
	• N.C. Forage & Grasslands Council	(Conover 4)
	• Stocker & Cattle Feeders	Dr. Catherine Harris, NCDA & CS (Conover 3)
	• From Pasture to People: Getting Your Farm Ready for the Public	Janice Wright, Rooted in NC (Yount Meeting Room)
3:00 p.m.	Afternoon Break	
	• Hay Sampling Demonstration	(Hickory 1&2)
3:00 p.m.	Committee Meetings Continue (Everyone Welcome)	
	• Purebred Breeders Council	(Yount Meeting Room)
	• N.C. Beef Cattle Improvement Program (NC BCIP)	Dr. Charles Martinez, University of Tennessee (Conover 3)
	• Joint Legislative & Membership	Kent Bacus, NCBA & N.C. Rep. Karl Gillespie (Conover 1&2)
5:15 p.m.	NCCA Annual Business Meeting (Everyone Welcome)	(Conover 1&2)
5:00-8:00 p.m.	Social & NCBA PAC/NCCA Support Auction	(Hickory 2&4)
6:00-7:00 p.m.	Poster Presentations of NCCA Funded Research Projects	(Hickory 1&2)
8:30 p.m.	Social Ends & Trade Show Closes	

Educational Program, Presented By



N.C. Cattle Conference, Presented By



Saturday, February 21, 2026

7:00 a.m.	Registration Opens	(Lobby)
7:30 a.m.	Youth Recognition Breakfast	(Hickory 4)
9:00 a.m.	Trade Show Opens	(Hickory 1&2)
9:00-12:00 noon	Trade Show Activities	
	• Skillathon Contest	(Hickory 1&2)
	• Beef Quality Assurance (BQA) Certification	(NCSU Extension Booth)
9:00-10:00 a.m.	Breakout Sessions	
	• Enhancing Beef Efficiency in the Fescue Belt	Dr. E. Benjamin Rojo, N.C. State University (Conover 4)
	• Estate and Succession Planning	Stephen Bishop, N.C. Farmlink (Conover 3)
	• N.C. Tobacco Trust Fund Commission: United in Education	Dr. Erica Edwards, NCTTFC (Catawba 1)
10:00 a.m.	Morning Break	
	• Hay Sampling Demonstration	(Hickory 1&2)
10.15-11:15 a.m.	Breakout Sessions	
	• Farmland Preservation	Leslie Vanden Herik, American Farmland Trust (Conover 2)
	• From Pasture to Plate: Marketing Strategies from Local Beef Producers (Moderated by N.C. Choices)	Melissa Falcone, Anna Jackson, & Jeff Bradley (Conover 1)
12:00 noon	Adjourn	



FEB 20-21, 2026

HICKORY METRO CENTER • HICKORY, NC

Presented by



February 20-21, 2026

Hickory Metro Center
Hickory, NC



VISIT WITH NEWLY ELECTED NCBA
PRESIDENT GENE COPENHAVER AT
NC CATTLE CONFERENCE

GENE COPENHAVER
Washington County, Virginia

Presented by



Friday, February 20, 2026

Hickory Metro Center

Session Spotlight



10:15 A.M.
Market Outlook and
Risk Management

DR. CHARLEY MARTINEZ

Assistant Professor and Extension
Economist at University of Tennessee

Presented by



Session Spotlight



9:00 A.M.
Opening Session/
Efficiency and Genomics
in Commercial Cattle

LEE LEACHMAN
Leachman Cattle /CEO

Presented by



Session Spotlight



12:00 P.M.
Keynote Session:
Understanding Your
Beef Checkoff

RUSS USELTON
Region II Federation VP

Presented by



- YON FAMILY FARMS -

Spring Bull & Female Sale

FEBRUARY 21, 2026

11 A.M. IN RIDGE SPRING, SC

SELLING 200 BULLS & 60 FEMALES

Long Yearling Bulls • 3-in-1 Fall Pairs • Bred Cows • Bred Heifers

Forage – Developed Angus Cattle

HERD SIRE PROSPECTS



CED +9
WW +80
YW +141
SM +90
SB +229
SC +387

AAA 21085466

Yon Saluda x Fireball

Sorts straight to the top for his combination of Claw, Angle, HP, SM and SC.



CED +14
WW +84
YW +152
SM +126
SB +193
SC +376

AAA 21068003

Yon Discipline x Justified

Top 1% for SM & 2% SC. Selling 33 Discipline sons in this offering and he leads the pack.



CED +8
WW +88
YW +156
SM +100
SB +188
SC +344

AAA 21126101

Sunbeam x Patriarch

Ranks in the top 1% for SM and top 3% for SG & SC. Selling 18 Top Cut sons in this offering.

Free bull delivery with \$8,000 total bull purchases

YON SARAH D668 FLUSH OPPORTUNITY

Gauranteed minimum of six embryos and 3 pregnancies to the bull of your choice!
Semen, flush costs and shipping of embryos are the buyer's responsibility.

Her sons include:

Yon Saluda

Yon Top Cut

Yon Southern Comfort

Yon Strong



\$B 224
\$C 356

Yon Sarah D668

Kevin (803) 622-4140 Lydia (803) 622-8597 Drake (803) 622-5015 Sally (803) 312-4837 Corbin (803) 480-2307

Ridge Spring, South Carolina

www.yonfamilyfarms.com

YON
FAMILY FARMS

DVAuction



To view the sale or bid online, visit www.DVAuction.com. Find the "Mid-Atlantic Cattle Sales (Richfield, NC)" sale and click on "Details." From this page you can view the catalog, videos, or log in to watch the sale. If you have an account, log in and view the sale. If you do not, you must create an account under the "Create New Account" tab in the upper left hand corner of the screen. You will need to confirm this account through your e-mail.

You DO NOT have to be approved for a buyer's number just to watch the sale but you will still need to create an account with DVAuction.



Mid-Atlantic Cattle Sales, LLC
28978 Misenheimer Rd. Richfield, NC 28137
info@macsvideo.com • www.MACSvideo.com

**Bonded through USDA Packers & Stockyards*

SALE TERMS AND CONDITIONS - PAGE 1 OF 2

MID-ATLANTIC CATTLE SALES, LLC

1. Each bidder must be pre-registered and have a Buyer Number to participate in the auction. To register for the auction call 704-322-9770, 704-322-0840, or register through DV Auction. By participating in the auction, the Buyer expressly agrees to adhere to these Terms and Conditions and to the provisions set forth in the Livestock Purchase Agreement sent after the auction. All cattle being offered for sale are under standard Contracts for Sale. All cattle are purchased under standard Contracts for Purchase by the Buyers.
2. The cattle offered for sale are indicated on the sale sheets or online sale description as described to the MACS representatives by the owner. They are described by lot numbers, seller, location of the cattle, numbers of head, estimated weight, management practices, delivery date, conditions of sale and delivery, and verified programs. Representatives for each load are listed under each respective lot. Every effort has been made to assure the correctness of this information but all announcements from the auctioneer or official auction staff prior to or during the sale shall take precedence over printed matter herein.
3. Auction bids will be taken as voice bids by telephone and in person or online bids through DV Auction. Bids are asked with each lot of cattle and will be sold to the highest bidder on the basis of estimated weight. Seller reserves the right to "no sale" the load lot(s) of their cattle at the time the highest bid is made as long as the "no sale" announcement is made prior to the next lot being sold. Any departure from this procedure will be announced and all announcements made from the auctioneer or official auction staff will take precedence over printed matter herein.
4. The Auctioneer reserves the right to reject any and all bids. Auctioneer will settle all disputed bids. If a dispute arises between two or more bidders, the Auctioneer may immediately put the lot up for sale again and resell to the highest bidder. The decision of the Auctioneer shall be final and absolute.
5. One full load of stocker or feeder cattle will be contracted for approximately 48,000 lbs. and the respective head count at the base weight at the full truckload weight. No freight adjustment will be given if the average weight at delivery is under the base weight and the head count delivered is within 95% of the contracted head count. Mid-Atlantic Cattle Sales and its representatives will act as agents only in the sale of lots of cattle. As the marketing agency we cannot guarantee a minimum or maximum amount of shrink on any load. Any weight guarantees in regard to shrink must be given by Seller. Mid-Atlantic Cattle Sales cannot guarantee off truck weights.
6. Cattle that are picked up after the stated delivery dates will be subject to a 2# per head per day increase on the base weight and any weight stops for each day late after the last stated delivery date. Any deviation from this 2# per head per day will be posted in the catalog and announced on sale day.
7. Most loads have weight stops at 25-50 lbs. over the base weight. The individual weight stops are posted on each lot. If a weight stop is listed, cattle will slide after shrink up to the posted weight stop and be sold on a total net weight at the posted weight stop. Any pounds after shrink over the weight stop will not be billed to the buyer or paid to the seller unless other arrangements have been made in writing.
8. All cattle will be sold on a sliding scale as listed on each load. The "price slide" will go into effect when the average net weight of the live cattle is over the base weight the cattle are sold at. This will go into effect starting at 1 pound over the base weight.
Slide Example: The cattle were sold at a base weight of 700 lbs with a \$5/cwt topside slide for \$150/cwt and at delivery weighed 725 lbs after shrink. The cattle would slide \$1.25 for a new price of \$148.75 at 725 lbs.
[Slide (\$5/cwt) X Pounds Over (25) = \$1.25/cwt] Also can be shown as $[\$5 / 100 \times 25 = \$1.25]$
9. On split loads the heifer price will be \$____/cwt (as stated in the lot information) back of the original price of the steers. The steers will be based at their purchase price and base weight and the heifers will be based at their purchase price and base weight. At delivery, slides and weight stops will be calculated separately on each group.

*Updated March 28, 2023
Updated July 1, 2024*

SALE TERMS AND CONDITIONS - PAGE 2 OF 2

MID-ATLANTIC CATTLE SALES, LLC

- 10.** The Buyer is responsible for all arrangements and regulatory requirements with respect to the transportation of the livestock and the Buyer is responsible for sending trucks to adequately load the number of head and/or the total weight contracted in order to legally transport them to their final destination. Cattle sold will be sorted and delivered to the stated weigh point by the Seller and weighed on a certified scale. Buyer will receive the cattle at point of weighing under conditions as stated with respect to each lot. Buyer will take ownership of the cattle at the point of loading.
- 11.** Health entry requirements for the state of entry are the responsibility of the Buyer. The Seller will furnish any health certificates required for the state of origin and Federal Law at the request of the buyer. If additional health certificates, documentation or tests are required for shipment to the Buyer's destination, it shall be at the Buyer's request and expense.
- 12.** Any heifer that is sold as guaranteed open and is determined to be bred by the buyer will receive a \$200 per bred heifer refund given appropriate documentation is provided within 90 days (updated) of the cattle being delivered. Documentation must include lot information, heifer identification, and veterinarian documentation. **UPDATE: Effective July 1, 2024 all heifer loads, unless explicitly stated in the catalog, are sold with a 90-day bred heifer refund guarantee. The catalog will explicitly state if heifers have been checked for pregnancy prior to delivery so that the buyer can plan accordingly.**
- 13.** Payment by Buyer is due and payable in accordance with USDA P&S prompt pay policy upon delivery of the cattle and at such times as the value of the cattle is determined based on weight (subject to condition), price (subject to condition), and any other conditions stated at time of sale. Payment must be sent to Mid-Atlantic Cattle Sales within 1 day after the cattle are received by the Buyer. We request that all payments be sent by Wire Transfer, ACH, or overnight delivery of a check via FedEx or UPS. Payment sent via the U.S. Postal Service (1st Class or Priority Mail) are expected to be received within 7 business days of delivery. Any fees incurred for sending payment will be at the Buyer's expense.
- 14.** Mid-Atlantic Cattle Sales does not warrant the harvest date on source and age verified cattle and cannot guarantee back verification on any program requiring signed affidavits or 3rd party verification. Mid-Atlantic Cattle Sales will make all efforts to ensure verifications are met, but it is the Buyer's responsibility to verify all claims of the Seller to fit specific programs prior to purchase.
- 15.** There are no implied warranties of merchantability or fitness for a particular purpose on any livestock sold. Seller does not warrant that the livestock are free from any latent defect, condition, sickness, or disease. Seller does not assume responsibility for any loss after the livestock are delivered, which results from any latent defect, condition, sickness, or disease.



Marcus Harward: 704-322-0840

Brooke Harward: 704-322-9770

info@macsvideo.com

www.MACSvideo.com

28978 Misenheimer Rd • Richfield, NC 28137