



*A Family Owned and Operated  
Livestock Video Auction*

---

**AUGUST 3, 2016**

*Regular Video Auction*

9:30 AM est. / 8:30 AM cst.

---

Marcus: (704) 322-0840 // Brooke: (704) 322-9770

Office: (704) 463-5828 // Fax: (704) 463-5861

**MACSvideoauction@gmail.com**

**[www.MACSvideo.com](http://www.MACSvideo.com)**



# MID-ATLANTIC CATTLE SALES

## Table of Contents - August 3, 2016

Table of Contents & Video Information	Page 2
Call-In Numbers & DVAuction Online	Page 3
Lot 1 1 Load Steers 650 lbs. Atkinson Cattle Company <b>**All-Natural**</b>	Page 4
Lot 2 1 Load Steers 720 lbs. Alamance Co. Cattlemen <b>**All-Natural**</b>	Page 4
Lot 3 1 Load Steers 750 lbs. Herbie Dixon Farms	Page 5
Lot 4 1 Load Steers 770 lbs. Triple J Farm	Page 5
Lot 5 1 Load Steers 850 lbs. Talley Farms, Inc.	Page 6
Lot 6 1 Load Heifers 615 lbs. Patrick & Alamance Co. <b>**All-Natural**</b>	Page 6
Lot 7 Partial Load Heifers 735 lbs. Triple J Farm	Page 7
Lot 8 1 Load Heifers 750 lbs. Ridgecrest Farms	Page 7
Lot 9 1 S. Load Steers 625 lbs. Pee Dee Cattle Alliance <b>**All-Natural**</b>	Page 8
Heifers 560 lbs.	
Lot 10 1 S. Load Steers 725 lbs. Herbie Dixon Farms	Page 8
Heifers 700 lbs.	
Lot 11 1 S. Load Steers 825 lbs. Lassiter Farms <b>**All-Natural**</b>	Page 9
Heifers 740 lbs.	
2016 Fall Graded Feeder Calf Sales	Page 10
Upcoming Auction Schedule & September Select Sale	Page 11

***Effective November 1, 2015, all cattle that are picked up after the stated delivery dates will be subject to an increase on the base weight of 3# per day.***

*Most loads have weight stops at 25-50 lbs. over base weight. The individual weight stops are posted on each lot.*

## Video Information

To view the sale catalog and videos online  
please visit [www.MACSvideo.com](http://www.MACSvideo.com)

Videos of sale cattle are also located at  
[www.youtube.com/MACSvideoauction](http://www.youtube.com/MACSvideoauction)



**MID-ATLANTIC**  
CATTLE SALES

## Call-In Information

Call #: **1-866-906-9888**

Conference Code: **9461720 #**

**\*\*NEW TIME!\*\*** *The sale will begin at 9:30 am est. (8:30 cst.)*

### Steps for Conference Call:

- 1 Call **704-474-7681** prior to the sale to receive a **buyer's number**.
- 2 Call **1-866-906-9888** to enter the conference call.
- 3 Enter Code: **9461720**, followed by the **#** sign. You may state your name or simply press the **#** sign again to enter the call.
- 4 Please minimize all background noise. **To mute your phone press \*6.**  
To un-mute, press **\*6** again.
- 5 Simply hang up to leave the conference call.

*Thank you!*

**This sale will be broadcast live on the internet.**



**Call Brooke at 704-322-9770 to receive a buyer's number for online bidding. After you have received your number you may watch, listen, & bid online at [www.DVAuction.com](http://www.DVAuction.com)!**

**DVAuction provides a great opportunity for you to listen to the sale while also watching videos of the cattle in real-time.  
You do not have to have a number to watch the sale.**

**You may contact Brooke Harward at 704-322-9770 with any questions regarding watching the sale on DVAuction.**

# Mid-Atlantic Cattle Sales - August 3, 2016

**LOT 1 STEERS 1 LOAD**  
**Avg. Wt:** 650 lbs. **Variance:** 150 lbs.  
**Contractor:** Eddie Gordon

**Price:** \$ \_\_\_\_\_ **Buyer #** \_\_\_\_\_



**Atkinson Cattle Company**  
 Marion, SC at US 501 and SC 41-A  
 35 miles east of Florence, SC



<b>Blk/BWF</b>	100%	<b>Frame</b>	
<b>Char-X</b>	-	<b>Medium</b>	100%
<b>Red</b>	-	<b>Large</b>	-
<b>#1</b>	95%	<b>Flesh</b>	
<b>#1<sup>1/2</sup></b>	5%	<b>Medium</b>	100%



**Delivery Date:** September 12 - 16 **Shrink:** 2% **Slide:** \$8/CWT topside only  
**Conditions:** Cattle will be hauled 5 miles and weighed on the truck on Certified Scales.  
**Nutrition:** TMR Southern States 14% commodity feed 5 lbs./day. Free choice mineral, pasture, and hay.  
**Vaccinations:** Bovi-Shield Gold One Shot, Ultrabac 7  
**Implants:** None **Dewormer:** Safeguard (1x), Ivomec Pour-On (1x)

**COMMENTS** *Home-Raised, All-Natural, Backgrounded, Weaned, BQA Certified.*



A very nice set of home-raised, weaned, and backgrounded steers. The steers are sired by top quality Brangus and Ultra Black bulls from Cow Creek Genetics. They are thick-muscled and carry good winter hair, carrying about 1/16 ear. They are bunk broke and carrying a grass flesh. A fancy load of all-natural steers that would work well on grass or feed.

**LOT 2 STEERS 1 LOAD**  
**Avg. Wt:** 720 lbs. **Variance:** 150 lbs.  
**Contractor:** Marcus Harward

**Price:** \$ \_\_\_\_\_ **Buyer #** \_\_\_\_\_



**Alamance County Cattlemen's Alliance**  
 Burlington, NC  
 20 miles east of Greensboro, NC



<b>Blk/BWF</b>	95%	<b>Frame</b>	
<b>Char-X</b>	5%	<b>Medium</b>	100%
<b>Red</b>	-	<b>Large</b>	-
<b>#1</b>	100%	<b>Flesh</b>	
<b>#1<sup>1/2</sup></b>	-	<b>Medium</b>	100%



**Delivery Date:** August 15 - 20 **Shrink:** 2% **Slide:** \$8/CWT topside only  
**Conditions:** Cattle will be hauled 20-30 miles to Alamance Cattlemen's Barn and weighed on the ground.  
**Nutrition:** Cattle are fed a commodity soyhull pellet ration with grass, hay and a chelated mineral program  
**Vaccinations:** Bovi-Shield Gold 5 (1x), Bovi-Shield Gold One Shot (1x), Ultra Choice 8 (2x)  
**Implants:** None **Dewormer:** Dectomax Inject. (1x)

**COMMENTS** *Home-Raised, All-Natural, Backgrounded, Weaned, BQA Certified*



A fancy load of steers from the Alamance Cattlemen's Alliance that have been backgrounded 60+ days and will be all-natural. These calves are of top-quality genetics, mainly Angus-based with a little Simmental or Charolais. They are bunk broke and have been very well managed. An excellent load of calves ready to go to feed.



# Mid-Atlantic Cattle Sales - August 3, 2016

**LOT 3 STEERS 1 LOAD**  
**Avg. Wt:** 750 lbs. **Variance:** 125 lbs.  
**Contractor:** David McDannald

**Price:** \$ \_\_\_\_\_ **Buyer #** \_\_\_\_\_



**Herbie Dixon Farm**  
 Girard, GA  
 45 miles southeast of Augusta, GA



<b>Blk/BWF</b>	100%	<b>Frame</b>	
<b>Char-X</b>	-	<b>Medium</b>	100%
<b>Red</b>	-	<b>Large</b>	-
<b>#1</b>	100%	<b>Flesh</b>	
<b>#1<sup>1/2</sup></b>	-	<b>Medium</b>	100%



**Delivery Date:** ASAP by August 12 **Shrink:** 2% **Slide:** \$8/CWT topside only  
**Conditions:** Cattle will be weighed on the truck on Certified Scales.  
**Nutrition:** Cattle are on millet and ground oats and corn with access to free choice minerals.  
**Vaccinations:** Pyramid 5 + Presponse SQ, Vision 8 w/somnus  
**Implants:** None **Dewormer:** Safeguard, Ivermec, Longrange

## COMMENTS *Home-Raised, Backgrounded, Weaned, Heifers Guaranteed Open*



An excellent load of home-raised, backgrounded steers. They are Angus-Hereford cross, sired by Yon Family Farms Angus bulls, Yon Final Answer and Yon Upward bulls. They are pre-dominantly out of BWF momma cows. Cattle have been weaned over 60 days and have been backgrounded. They are also bunk broke. A fancy set of calves read to go to feed.

**LOT 4 STEERS 1 LOAD**  
**Avg. Wt:** 770 lbs. **Variance:** 150 lbs.  
**Contractor:** Bruce Shankle

**Price:** \$ \_\_\_\_\_ **Buyer #** \_\_\_\_\_

**Triple J Farm**  
 Marshville, NC  
 25 miles east of Charlotte, NC



<b>Blk/BWF</b>	66 hd.	<b>Frame</b>	
<b>Char-X</b>	3 hd.	<b>Medium</b>	100%
<b>Red</b>	1 hd.	<b>Large</b>	-
<b>#1</b>	100%	<b>Flesh</b>	
<b>#1<sup>1/2</sup></b>	-	<b>Medium</b>	100%



**Delivery Date:** August 15 - 20 **Shrink:** 2% **Slide:** \$8/CWT topside only  
**Conditions:** Cattle will be hauled 1/2 mile and weighed on the truck on Certified Scales.  
**Nutrition:** Southern States Jump Start feed with mineral, pasture, and hay.  
**Vaccinations:** Bovi-Shield Gold 5 (1x), Vista Once (1x), Vision 7 w/somnus (1x)  
**Implants:** Ralgro **Dewormer:** Safeguard (1x), Longrange (1x)

## COMMENTS *Home-Raised, Pre-Conditioned, Weaned, BQA Certified*



A very nice set of home-raised calves born in the fall of 2015. Calves are all Angus or Hereford sired out of Angus-based cows. They are weaned for 45+ days and double vaccinated. There are 70 steers to choose from for the load. A very good set of calves ready to go out mid-August.

# Mid-Atlantic Cattle Sales - August 3, 2016

**LOT 5 STEERS 1 LOAD** Price: \$ \_\_\_\_\_ Buyer # \_\_\_\_\_

**Avg. Wt:** 850 lbs. **Variance:** 125 lbs.

**Contractor:** Bruce Shankle

SelectVAC

**Talley Farms, Inc.**  
Stanfield, NC  
17 miles east of I-485 in Charlotte, NC



<b>Blk/BWF</b>	100%	<b>Frame</b>	
<b>Char-X</b>	-	<b>Medium</b>	100%
<b>Red</b>	-	<b>Large</b>	-
<b>#1</b>	95%	<b>Flesh</b>	
<b>#1<sup>1/2</sup></b>	5%	<b>Medium</b>	100%



**Delivery Date:** August 5 - 10 **Shrink:** 2% **Slide:** \$8/CWT topside only

**Conditions:** Cattle will be weighed on the truck at the farm on Certified Scales.

**Nutrition:** 14% TMR with haylage, wheat midds, and soyhulls as well as pasture, mineral, and hay.

**Vaccinations:** Bovi-Shield Gold One Shot (1x), Bovi-Shield Gold 5 (1x), Vision 7 (1x)

**Implants:** Ralgro (1x) **Dewormer:** Longrange & Ivermec

**COMMENTS** Backgrounded, Weaned, BQA Certified.



Another reputational load of steers from Talley Farms. Steers were purchased from the Norwood area Feeder Calf Sale in May and backgrounded at the farm. Steers have been weaned for 75+ days, double vaccinated, and are bunk broke. Steers were mainly on grass until the last couple of weeks have been fed a TMR. A fancy set of steers ready to go to feed.

**LOT 6 HEIFERS 1 LOAD** Price: \$ \_\_\_\_\_ Buyer # \_\_\_\_\_

**Avg. Wt:** 615 lbs. **Variance:** 300 lbs.

**Contractor:** Marcus Harward

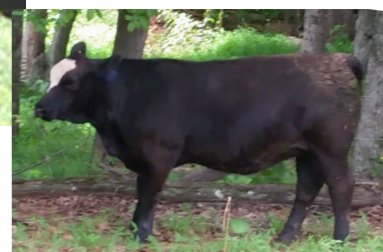
AllNATURAL

SelectVAC

**Patrick & Alamance County Alliances**  
Lawsonville, NC - 49 Head  
Burlington, NC - 40 Head.



<b>Blk/BWF</b>	92%	<b>Frame</b>	
<b>Char-X</b>	8%	<b>Medium</b>	95%
<b>Red</b>	-	<b>Large</b>	5%
<b>#1</b>	90%	<b>Flesh</b>	
<b>#1<sup>1/2</sup></b>	10%	<b>Medium</b>	100%



**Delivery Date:** ASAP **Shrink:** None **Slide:** \$8/CWT topside only

**Conditions:** Hauled 30 miles to weigh location and weighed on the ground on Certified Scales.

**Nutrition:** Cattle are fed a commodity soyhull pellet ration with grass, hay and free choice minerals

**Vaccinations:** Bovi-Shield Gold 5 (1x), Bovi-Shield Gold One Shot (1x), Ultra Choice 8 or Ultrabac (2x)

**Implants:** None **Dewormer:** Dectomax Inject. (1x)

**COMMENTS** Home-Raised, All-Natural, Weaned, Backgrounded, Guaranteed Open, BQA Certified



A very nice set of all-natural heifers. The load will include 2 producers (49 Head) from Patrick County, VA and 4 (~40 head) from Alamance County. All heifers are backgrounded and have been weaned for 80+ days. They are sired by performance tested bulls or AI sires. A very nice group of heifers that are all-natural.

# Mid-Atlantic Cattle Sales - August 3, 2016

**LOT 7 HEIFERS 55 HEAD - 1 LOAD** Price: \$ \_\_\_\_\_ Buyer # \_\_\_\_\_

**Avg. Wt:** 735 lbs. **Variance:** 200 lbs.

**Contractor:** Bruce Shankle

**Triple J Farm**  
Marshville, NC  
25 miles east of Charlotte, NC



<b>Blk/BWF</b>	54 hd.	<b>Frame</b>	
<b>Char-X</b>	-	<b>Medium</b>	100%
<b>Red</b>	1 hd.	<b>Large</b>	-
<b>#1</b>	100%	<b>Flesh</b>	
<b>#1<sup>1/2</sup></b>	-	<b>Medium</b>	100%

**Delivery Date:** August 22 - 27

**Shrink:** 2% **Slide:** \$8/CWT topside only

**Conditions:** Cattle will be hauled 1/2 mile and weighed on the truck on Certified Scales.

**Nutrition:** Southern States Jump Start feed with mineral, pasture, and hay.

**Vaccinations:** Bovi-Shield Gold 5 (1x), Vista Once (1x), Vision 7 w/somnus (1x)

**Implants:** Ralgro

**Dewormer:** Safeguard (1x), Longrange (1x)

**COMMENTS** *Home-Raised, Pre-Conditioned, Weaned, BQA Certified*



Another nice set of home-raised calves born in the fall of 2015. Calves are all Angus or Hereford sired out of Angus-based cows. They are weaned for 45+ days and double vaccinated. This will be a light load with 55 head to make about 40,000 lbs. A very good set of calves ready to go out late-August.

**LOT 8 HEIFERS 1 LOAD** Price: \$ \_\_\_\_\_ Buyer # \_\_\_\_\_

**Avg. Wt:** 750 lbs. **Variance:** 125 lbs.

**Contractor:** Mark Bray

**Ridgecrest Farms**  
Lawsonville, NC  
35 miles north of Winston-Salem, NC

<b>Blk/BWF</b>	65%	<b>Frame</b>	
<b>Char-X</b>	25%	<b>Medium</b>	100%
<b>Red</b>	10%	<b>Large</b>	
<b>#1</b>	95%	<b>Flesh</b>	
<b>#1<sup>1/2</sup></b>	5%	<b>Medium</b>	100%



**Delivery Date:** August 8 - 12

**Shrink:** 2% **Slide:** \$8/CWT topside only

**Conditions:** Cattle will be weighed on the farm on Certified Scales.

**Nutrition:** Corn silage, wet corn gluten, and soyhulls with pasture, hay, and minerals.

**Vaccinations:** Vista 5 (2x), Inforce 3, Vision 7, Nuplura

**Implants:** Ralgro (110+ days ago)

**Dewormer:** Ivermectin Pour-On, Safeguard

**COMMENTS** *Backgrounded, Weaned, Guaranteed Open, BQA Certified*



A very nice load of feeding heifers. Part of the load is home-raised and the rest were bought as 3 and 4 weights. There are about 80 head to choose from. They will be sleeved by a vet from Rocky Creek Vets and guaranteed open. They are bunk broke and broke to waters. There is one with tipped horns. A very good load of heifers ready to go to feed.



# Mid-Atlantic Cattle Sales - August 3, 2016

LOT 9 STRS/HFRS 1 SPLIT LOAD

Price: \$ Buyer #

Avg. Wt: Strs: 625 lbs. Variance: 150 lbs.  
Hfrs: 560 lbs. Variance: 150 lbs.

**allNATURAL**

**SelectVAC**



Contractor: Eddie Gordon

**Pee Dee Cattle Alliance**  
Marion, SC  
35 miles east of Florence, SC

**650**  
WEIGHT  
STOP

**585**  
WEIGHT  
STOP

<b>Blk/BWF</b>	100%	<b>Frame</b>	
<b>Char-X</b>	-	<b>Medium</b>	100%
<b>Red</b>	-	<b>Large</b>	-
<b>#1</b>	95%	<b>Flesh</b>	
<b>#1<sup>1/2</sup></b>	5%	<b>Medium</b>	100%



**Delivery Date:** September 19 - 23

**Shrink:** 2%

**Slide:** \$8/CWT topside only

**Conditions:** Cattle will be weighed on the truck on Certified Scales.

**Nutrition:** TMR 13% commodity feed 5 lbs./day. Free choice mineral, pasture, and hay.

**Vaccinations:** Bovi-Shield Gold One Shot, Ultrabac 7

**Implants:** None

**Dewormer:** Safeguard (1x), Ivomec Pour-On (1x)

**COMMENTS** Home-Raised, All-Natural, Backgrounded, Weaned, BQA Certified.



A very nice set of home-raised, all-natural calves from 3 producers-Johnson Atkinson, Matt Brown, and Seagroves Family Farms. Calves are out of Ultrablack mommas and Registered Angus bulls. They carry about 1/16 ear or less. They will be weaned 45+ days at delivery. They are a very docile group of calves. A fancy load of all-natural calves that would work well on grass or feed.

LOT 10 STRS/HFRS 1 SPLIT LOAD

Price: \$ Buyer #

Avg. Wt: Strs: 725 lbs. Variance: 125 lbs.  
Hfrs: 700 lbs. Variance: 125 lbs.

**YON**  
FAMILY FARMS

**mead**  
CATTLE ENTERPRISES

Contractor: David McDannald

**Herbie Dixon Farm**  
Girard, GA  
45 miles southeast of Augusta, GA

**760**  
WEIGHT  
STOP

**735**  
WEIGHT  
STOP

<b>Blk/BWF</b>	90%	<b>Frame</b>	
<b>Char-X</b>	10%	<b>Medium</b>	100%
<b>Red</b>	-	<b>Large</b>	-
<b>#1</b>	100%	<b>Flesh</b>	
<b>#1<sup>1/2</sup></b>	-	<b>Medium</b>	100%



**Delivery Date:** August 25 - 31

**Shrink:** 2%

**Slide:** \$8/CWT topside only

**Conditions:** Cattle will be weighed on the truck on Certified Scales. **Heifers sell \$0.06 back.**

**Nutrition:** Cattle are on millet and ground oats and corn with access to free choice minerals.

**Vaccinations:** Pyramid 5 + Presponse SQ, Vision 8 w/somnus

**Implants:** None

**Dewormer:** Safeguard, Ivermec, Longrange

**COMMENTS** Home-Raised, Backgrounded, Weaned, Heifers Guaranteed Open



An excellent load of home-raised, backgrounded calves. They are Angus-Hereford cross, sired by Yon Family Farms Angus bulls, Yon Final Answer and Yon Upward bulls. They are predominantly out of BWF momma cows. Cattle have been weaned over 60 days and have been backgrounded. They are also bunk broke. There are 9 smoke steers but the load may be able to be made all black. A fancy set of calves read to go to feed.



# Mid-Atlantic Cattle Sales - August 3, 2016

**LOT 11**      **STRS/HFRS**      **1 SPLIT LOAD**

Price: \$ \_\_\_\_\_ Buyer # \_\_\_\_\_

**Avg. Wt:**      34 Strs: 825 lbs. **Variance:**      150 lbs.  
                  26 Hfrs: 740 lbs. **Variance:**      150 lbs.

**AllNATURAL**      **SelectVAC.**

**Contractor:** Marcus Harward

**Lassiter Farm - David Lassiter**  
 Liberty, NC  
 20 miles southeast of Greensboro, NC

**850**  
WEIGHT  
STOP

**765**  
WEIGHT  
STOP

<b>Blk/BWF</b>	100%	<b>Frame</b>	
<b>Char-X</b>	-	<b>Medium</b>	100%
<b>Red</b>	-	<b>Large</b>	-
<b>#1</b>	95%	<b>Flesh</b>	
<b>#1<sup>1/2</sup></b>	5%	<b>Medium</b>	100%



**Delivery Date:** Augsut 15 - 19

**Shrink:**      2%

**Slide:**      \$8/CWT topside only

**Conditions:**      Cattle will be weighed on the farm on Certified Ground Scales. **Heifers sell \$0.07 back.**

**Nutrition:**      TMR with pasture and free choice minerals and hay.

**Vaccinations:**      Bovi-Shield Gold 5 (1x), Bovi-Shield Gold One Shot (1x), Calvary 9 (2x)

**Implants:**      None

**Dewormer:**      Dectomax Inject., Cydectin

**COMMENTS**      *Home-Raised, All-Natural, Backgrounded, Weaned, Heifers Guaranteed Open, BQA Certified*



A very nice set of home-raised steers and heifers from David Lassiter. They are double vaccinated, bunk broke, broke to ball waters, and broke to a hot wire fence. They are Angus-based with a little Simmental breeding, sired by Angus bulls. These calves will qualify as all-natural and have been weaned for 60+ days. A very nice split load of calves that are ready to go to feed.

**This sale will be broadcast live on the internet.**

# **DVAuction**

**Broadcasting Real-Time Auctions**



# 2016 GRADED FEEDER CALF SALES

*Held at Stanly County Livestock Market, Norwood, NC*

**August 11:** Feeder Calf Sale

**September 8:** Value-Added BQA Sale

**September 15:** Feeder Calf Sale

*Consignments are highly encouraged, even on the day of the sale.*

*To consign, call the barn at 704-474-7681 or Marcus Harward at 704-322-0840. Specific sale requirements may be found at [www.macsvideo.com](http://www.macsvideo.com).*

*Expecting 600-1,000 head at each sale.*

**Stanly County Livestock Market**

**13215 Indian Mound Rd. Norwood, NC 28128**

# Upcoming Auction Schedule

*All regular sales will be the first Wednesday of the month starting at 9:30 am est. (8:30 am cst.) unless otherwise noted\**

September 7

October 5

November 2

December 7

## September Select Bred Heifer & Performance Bull Sale

**Friday, September 23, 2016 | 7:00 pm**

**Stanly County Livestock Market**

*13215 Indian Mound Rd. Norwood, NC 28128*

*Complimentary supper served at 6:00 pm*

- Over 150 Bred Heifers, Young Cow/Calf Pairs, and Open Heifers
- 20 Angus & SimAngus Bulls

All animals consigned by local, reputable family farms. All bred females and young open heifers will be preg-checked by a licensed vet and checked for reproductive soundness.

*Update sheet will be available sale day.*

---

For sale updates, visit [www.MACSvideo.com](http://www.MACSvideo.com). Sale listing and pictures/videos will be posted in early September. For more information contact Marcus Harward at 704-322-0840.





**MID-ATLANTIC**  
**CATTLE SALES**

*28978 Misenheimer Rd. Richfield, NC 28137*

**Office:** (704) 463-5828

**Marcus Harward:** (704) 322-0840

**MACSvideoauction@gmail.com**  
**www.MACSvideo.com**