



MID-ATLANTIC CATTLE SALES

*A family owned and operated livestock video auction
with 30+ years of livestock marketing experience.*

APRIL 7, 2026

TUESDAY AT 1:00 PM EST

WWW.MACSVIDEO.COM



Mid-Atlantic Cattle Sales, LLC
28978 Misenheimer Rd. Richfield, NC 28137
704-322-0840 • 704-322-9770
info@macsvideo.com

DVAuction
Broadcasting Real-Time Auctions

Video Sale INFORMATION

The cattle offered for sale are indicated on the following sale sheets and the online sale description as described to the MACS representatives by the owner. They are described by lot numbers, seller, location of cattle, numbers of head, estimated weight, management practices, delivery date, conditions of sale and delivery, and verified programs. Representatives for each load are listed under each respective lot. Every effort has been made to assure the correctness of this information but all announcements from the auctioneer or official auction staff prior to or during the sale shall take precedence over printed matter herein.

SALE DATE & TIME:

Tuesday - April 7, 2026

1:00 pm est. | 12:00 pm cst.

CONTACT:

Marcus Harward704-322-0840

Brooke Harward704-322-9770

www.MACSvideo.com

View catalog, videos, and additional updates online.

www.vimeo.com/macsvideo

All videos of sale cattle are posted directly on our video page listed above and on DV Auction

***MACS Sale Terms and Conditions are listed in this catalog and online. All loads will sell under these terms and conditions.**

Bidding Options

We want to offer you the best opportunities we can to participate in our sales each month.
Below are three options for bidding on the sale.

1. CONFERENCE CALL

After 12:45 eastern on sale day, you can call the auction number to listen and bid on the sale. To bid during the sale, you will use your buyer number to bid on the lot. Contact Marcus or Brooke prior to the sale to receive a buyer's number. *Please keep background noise to a minimum as we will have multiple people on the line. To mute your phone, press *1. To un-mute, press *1 again.*

CALL-IN NUMBER: 1-866-906-9888

PASSCODE: 9461720 #



2. DV AUCTION - INTERNET VIEWING AND BIDDING

To view the sale or bid online, visit www.DVAuction.com. Find the "Mid-Atlantic Cattle Sales (Richfield, NC)" sale and click on "Details." From this page you can view the catalog, videos, or log in to watch the sale. If you have an account, log in and view the sale. If you do not, you must create an account under the "Create New Account" tab in the upper left hand corner of the screen. You will need to confirm this account through your e-mail. *It is best to do this at least a day before the sale.*

You DO NOT have to be approved just to watch the sale but you will still need to create an account with DVAuction. To register for a buyer's number, call Brooke at 704-322-9770 prior to the sale to be approved to bid online.

3. ABSENTEE BIDDING

For people who can not view or bid on the sale at sale time, we have can handle closed bids in house and assist you with absentee bidding. Contact Marcus at 704-322-0840 for more information.

*"Give thanks to the Lord, for he is good; his love endures forever.
Let the redeemed of the Lord tell their story—those he redeemed from the hand of the foe,"*

PSALM 107:1-2



LOT SUMMARY

TUESDAY, APRIL 7, 2026

Video Sale Information

Pg 2

Table of Contents / Lot Summary

Pg 3-4

LOT NUMBER	LOAD NUMBER	TYPE	BASE WT.	PRODUCER	STATE	DELIVERY	PAGE NUMBER
Lot 6101	1 Load	Steers	625 lbs.	Johnson & Owens Farm	NC	April 13-17	Pg 5
Lot 6102	1 Load	Steers	625 lbs.	T & R Farms * *Not weaned*	NC	May 14-16	Pg 5
Lot 6103	1 Load	Steers	645 lbs.	Wall Family Farms *GAP CARE VNB NHTC	GA	April 14-17	Pg 6
Lot 6104	2 Loads	Steers	650 lbs.	B6 Cattle	IN	April 13-17	Pg 6
Lot 6105	2 Loads	Steers	700 lbs.	B6 Cattle	IN	April 13-17	Pg 7
Lot 6106	1 Load	Steers	695 lbs.	Johnson & Owens Farm	NC	April 13-17	Pg 7
Lot 6107	1 Load	Steers	705 lbs.	Kairos Farms *GAP CARE VNB NHTC	GA	April 13-17	Pg 8
Lot 6108	1 Load	Steers	710 lbs.	Ward Farms	NC	April 13-18	Pg 8
Lot 6109	1 Load	Steers	725 lbs.	Howey Ranch *GAP VNB NHTC	NC	April 10-17	Pg 9
Lot 6110	1 Load	Steers	775 lbs.	Johnson & Owens Farm	NC	April 13-17	Pg 9
Lot 6111	1 Load	Steers	785 lbs.	Carmac Farms	NC	April 9-17	Pg 10
Lot 6112	1 Load	Steers	790 lbs.	Sinking Springs Farm *GAP VNB NHTC	VA	April 13-17	Pg 10
Lot 6113	1 Load	Steers	815 lbs.	Hemric Farms *GAP	NC	April 10-17	Pg 11
Lot 6114	1 Load	Steers	840 lbs.	Howey Ranch *GAP VNB NHTC	NC	April 10-17	Pg 11
Lot 6115	1 Load	Steers	845 lbs.	Rocking H Cattle Co *GAP CARE VNB NHTC	NC	April 9-17	Pg 12
Lot 6116	1 Load	Steers	845 lbs.	W & W Farms *	NC	April 14-17	Pg 12
Lot 6117A	2 Loads	Steers	880 lbs.	Donald Chriscoe Farm *	NC	April 9-17	Pg 12
Lot 6117B	2 Loads	Steers	880 lbs.	Donald Chriscoe Farm *	NC	April 9-17	Pg 13
Lot 6118	1 Load	Steers	900 lbs.	Vannoy Family Farms *GAP	NC	April 13-17	Pg 13
Lot 6119	1 Load	Steers	900 lbs.	Rocking H Cattle Co *GAP CARE VNB NHTC	NC	April 9-17	Pg 14
Lot 6120	1 Load	Steers	960 lbs.	Falling Creek Cattle Co	NC	April 13-17	Pg 14
Lot 6121	1 Load	Steers	990 lbs.	David & Brady Kirk *GAP VNB NHTC	SC	April 9-17	Pg 15

Continued on the next page

* = Affidavit Natural	GAP = GAP Certified	VNB = Verified Natural
NHTC = Non-Hormone Treated	CARE = BeefCARE Certified	ANGUS = AngusVerified Sires



LOT SUMMARY

TUESDAY, APRIL 7, 2026

LOT NUMBER	LOAD NUMBER	TYPE	BASE WT.	PRODUCER	STATE	DELIVERY	PAGE NUMBER
Lot 6122	1 Load	Heifers	650 lbs.	AMB Farms	NC	April 10-17	Pg 15
Lot 6123	1 Load	Heifers	660 lbs.	Johnson & Owens Farm	NC	April 13-17	Pg 16
Lot 6124	1 Load	Heifers	695 lbs.	Johnson & Owens Farm	NC	April 13-17	Pg 16
Lot 6125	2 Loads	Heifers	740 lbs.	Howey Ranch *GAP VNB NHTC	NC	April 10-17	Pg 17
Lot 6126	1 Load	Heifers	745 lbs.	Cox Land & Cattle	NC	April 10-17	Pg 17
Lot 6127	0.5 Load	Heifers	735 lbs.	Vannoy Family Farms *GAP	NC	April 13-17	Pg 18
Lot 6128	1 Load	Heifers	780 lbs.	Rocking H Cattle Co *GAP CARE VNB NHTC	NC	April 9-17	Pg 18
Lot 6129	1 Load	Heifers	790 lbs.	Donald Chriscoe Farm *	NC	April 9-17	Pg 19
Lot 6130	1 Load	Heifers	800 lbs.	Hemric Farms *GAP	NC	April 13-18	Pg 19
Lot 6131	1 Load	Heifers	850 lbs.	McDannald Cattle Company	SC	April 9-17	Pg 20
Lot 6132	1 Load	Heifers	925 lbs.	Langley Farms	NC	April 14-17	Pg 20
Lot 6133	1 Load	28 Strs 28 Hfrs	900 lbs. 925 lbs.	Black Farms *GAP VNB NHTC	SC	April 13-17	Pg 21
Lot 6134	0.5 Load	8 Strs 38 Hfrs	500 lbs. 540 lbs.	Wall Family Farms *GAP CARE VNB NHTC <i>*Selling heifers, steers sell up from heifers</i>	GA	April 14-17	Pg 21
Lot 6135	1 Load	61 Strs 23 Hfrs	595 lbs. 550 lbs.	Kairos Farms *GAP CARE VNB NHTC	GA	April 14-17	Pg 22
Lot 6136	1 Load	31 Strs 38 Hfrs	650 lbs. 690 lbs.	Sinking Springs Farm *GAP VNB NHTC	VA	April 13-17	Pg 22

Upcoming Video Sale Dates Pg 23
 DV Auction Information Pg 24
 MACS Sale Terms & Conditions Pgs 25-26

* = Affidavit Natural GAP = GAP Certified VNB = Verified Natural
 NHTC = Non-Hormone Treated CARE = BeefCARE Certified ANGUS = Angus Verified Sires



Lot 6101 1 Load of STEERS

Price: \$ _____ Buyer # _____

Johnson & Owens Farm
Snow Camp, NC - 20 miles southeast of Greensboro, NC

Backgrounded, Weaned



Base Wt: 625 lbs. Wt Stop: 655 lbs. (30#) Variance: 90 lbs.

Pickup Date: April 13-17 **Estimated Head Count** 78

Slide/Shrink: 1% shrink and slide \$17/cwt topside only

Weigh: Hauled 5 miles, 3 loads sorted, & weighed on certified MACS ground scales

Notice to load: 48 hours **Weaned:** 90+ days

Colors: 90% blk/bwf, 10% ch-x or red/rwf

Flesh: Medium

Muscling: 95% #1, 5% #1.5

Frame: Medium

Nutrition: Bunk fed 2% of body weight per day of corn and commodity blend feed with free choice mineral, pasture, and hay.

Vaccinations: Vista Once (3x), NasalGen 3 PMH (1x), Ultrabac 7 (2x), Pinkeye (2x)

Dewormer: Safeguard, Ivomec Pour-On & Inject. **Implants:** None

Genetics: Commercial Angus-based/crossbred.

Programs: No

Comments: Broke to bunks and waters. A very good group of background steers that were purchased as 3 & 4 weights from local sale barns, triple vaccinated, and backgrounded on pasture. There are 3 loads (225+ head) that have been running together and were individually weighed to sort three good loads. Need to load all 3 steer loads the same day, will be brought in on load out day, sorted, then weighed.

MACS Rep: Marcus Harward, 704-322-0840

Programs:  

Lot 6102 0.7 Load of STEERS

Price: \$ _____ Buyer # _____

T & R Farms (Travis & Robin Graves)
Burlington, NC - 15 miles east of Greensboro, NC

Home-Raised, Unweaned, Affidavit Natural, Vaccinated, BQA Certified



Base Wt: 625 lbs. Wt Stop: 655 lbs. (30#) Variance: 150 lbs.

Pickup Date: May 14-16 **Estimated Head Count** 55

Slide/Shrink: 2% shrink and slide \$17/cwt topside only

Weigh: Hauled 10 miles, sorted & weighed on certified MACS ground scales

Notice to load: 48 hours **Weaned:** No

Colors: 53 hd blk/bwf, 1 hd ch-x, 1 hd red

Flesh: Medium

Muscling: 95% #1, 5% #1.5

Frame: Medium

Nutrition: Bunk fed 5-6# per day of 15% commodity pellets and on the momma cow with pasture, hay, and free choice mineral.

Vaccinations: Vira Shield 6 VL5 (1x), Cavalry 9 w/ tet (2x)

Dewormer: Ivomec (1x), Safeguard (1x) **Implants:** None

Genetics: 70% or more Angus. Sired by Angus or SimAngus bulls and out of Angus-X and SimAngus-X dams. Many are AI-sired by Vermilion Spur, Tehama Tahoe, and Mead Magnitude. AI sires rank in the top 20% for Yearling Weight and 30% or better for Marb and \$Beef.

Programs: Seller Affidavit

Comments: Broke to bunks and waters. A fancy set of steers that are coming off the momma cow the day of pick up. These are high percentage Angus steers out of high performance, top-quality bulls. They have birthdates available on all calves. They have been vaccinated, hand fed a little, and qualify as all-natural - seller will sign natural affidavits. There are 55 head of steers at about 35,000 lbs.

MACS Rep: Marcus Harward, 704-322-0840

Programs:     

Lot 6103 1 Load of STEERS

Price: \$ _____ Buyer # _____

Wall Family Farms (Pete Wall)
Sylvania, GA - 15 miles north of Statesboro, GA

Home-Raised, GAP-4, BeefCare, Natural, Backgrounded, Weaned



Base Wt: 645 lbs. Wt Stop: 680 lbs. (35#) Variance: 200 lbs.

Pickup Date: April 14-17 **Estimated Head Count** 75

Slide/Shrink: 2% shrink and slide \$17/cwt topside only

Weigh: Hauled 15 miles, weighed on certified truck scales

Notice to load: 72 hours **Weaned:** 45+ days

Colors: 70% blk/bwf, 28% ch-x, 2% red

Flesh: Medium/Light

Muscling: 90% #1, 10% #1.5

Frame: Medium & Large

Nutrition: Bunk fed 8-10# of 13% commodity feed with free choice pasture, Vigortone mineral, and hay.

Vaccinations: Pyramid 5 Presponse (2x), Cavalry 9 (2x)

Dewormer: Synanthic, Eprinex **Implants:** None

Genetics: 75% or more Angus. Sired by Barnett Angus bulls or 1 Bieber Red Angus bull and out of Angus or Charolais-X cows. Char-x calves are 25% or less Charolais.

Programs: GAP-4; BeefCare; Verified Natural; NHTC; Affidavit

Comments: Broke to bunks and waters. A fancy group of steers that have been weaned for 45 days, are double vaccinated, and all natural. This herd has been built around 10+ years of extensive AI breeding and the cattle have proved it year after year in the feedlots. They know the age of all of their cows and calves can be tracked to each cow with individual birthdates. Would work great to go to grass or feed. Calves are all-natural and seller will sign affidavits as needed. GAP-4 Certificate can transfer at no cost to buyer (GAP#25155, Exp 7/24/26).

MACS Rep: Romaine Cartee, 912-531-0580



Lot 6104 2 Loads of STEERS

Price: \$ _____ Buyer # _____

B6 Cattle
Montezuma, IN - 10 miles E of Illinois state line; 65 miles West of Indianapolis

Backgrounded, Weaned



Base Wt: 650 lbs. Wt Stop: 675 lbs. (25#) Variance: 150 lbs.

Pickup Date: April 13-17 **Estimated Head Count** 149

Slide/Shrink: 2% shrink and slide \$17/cwt topside only

Weigh: Hauled 5 miles, weighed on certified truck scales

Notice to load: 48 hours **Weaned:** 90+ days

Colors: 80% blk/bwf, 20% ch-x (might be a couple reds)

Flesh: Medium

Muscling: 90% #1, 10% #1.5

Frame: Medium

Nutrition: Bunk fed TMR (silage, distillers, chopped hay) with mineral on grass lots.

Vaccinations: Vista Once (2x), Covexin 8 (2x)

Dewormer: Ivermec (1x), Safeguard (1x) **Implants:** None

Genetics: Commercial Angus-based/crossbred.

Programs: No

Comments: Broke to bunks and waters. A very good group of calves that were purchased 90+ days ago, brought in, vaccinated and all weaned and running together on grass lots. Two good loads of medium flesh, backgrounded steers ready to go to grass or feed.

MACS Rep: Jason Busenbark, 317-372-2331



Lot 6105 2 Loads of STEERS

Price: \$ _____ Buyer # _____

B6 Cattle

Montezuma, IN - 10 miles E of Illinois state line; 65 miles West of Indianapolis

Backgrounded, Weaned

Base Wt: 700 lbs. Wt Stop: 725 lbs. (25#) Variance: 150 lbs.



Pickup Date: April 13-17 **Estimated Head Count** 139

Slide/Shrink: 2% shrink and slide \$17/cwt topside only

Weigh: Hauled 5 miles, weighed on certified truck scales

Notice to load: 48 hours **Weaned:** 90+ days

Colors: 80% blk/bwf, 20% ch-x (might be a couple reds)

Flesh: Medium

Muscling: 90% #1, 10% #1.5

Frame: Medium

Nutrition: Bunk fed TMR (silage, distillers, chopped hay) with mineral on grass lots.

Vaccinations: Vista Once (2x), Covexin 8 (2x)

Dewormer: Ivermec (1x), Safeguard (1x) **Implants:** None

Genetics: Commercial Angus-based/crossbred.

Programs: No

Comments: Broke to bunks and waters. A very good group of calves that were purchased 90+ days ago, brought in, vaccinated and all weaned and running together on grass lots. Two good loads of medium flesh, backgrounded steers ready to go to grass or feed.

MACS Rep: Jason Busenbark, 317-372-2331

Programs:



Lot 6106 1 Load of STEERS

Price: \$ _____ Buyer # _____

Johnson & Owens Farm

Snow Camp, NC - 20 miles southeast of Greensboro, NC

Backgrounded, Weaned

Base Wt: 695 lbs. Wt Stop: 725 lbs. (30#) Variance: 65 lbs.



Pickup Date: April 13-17 **Estimated Head Count** 70

Slide/Shrink: 1% shrink and slide \$17/cwt topside only

Weigh: Hauled 5 miles, 3 loads sorted, & weighed on certified MACS ground scales

Notice to load: 48 hours **Weaned:** 90+ days

Colors: 90% blk/bwf, 10% ch-x or red/rwf

Flesh: Medium

Muscling: 95% #1, 5% #1.5

Frame: Medium

Nutrition: Bunk fed 2% of body weight per day of corn and commodity blend feed with free choice mineral, pasture, and hay.

Vaccinations: Vista Once (3x), NasalGen 3 PMH (1x), Ultrabac 7 (2x), Pinkeye (2x)

Dewormer: Safeguard, Ivomec Pour-On & Inject. **Implants:** None

Genetics: Commercial Angus-based/crossbred.

Programs: No

Comments: Broke to bunks and waters. A very good group of background steers that were purchased as 3 & 4 weights from local sale barns, triple vaccinated, and backgrounded on pasture. There are 3 loads (225+ head) that have been running together and were individually weighed to sort three good loads. Need to load all 3 steer loads the same day, will be brought in on load out day, sorted, then weighed.

MACS Rep: Marcus Harward, 704-322-0840

Programs:



Lot 6107 1 Load of STEERS

Price: \$ _____ Buyer # _____

Kairos Farms (Chap & David Cromley)
Brooklet, GA - 10 miles east of Statesboro, GA

Home-Raised, GAP-4, BeefCare, Natural, Backgrounded, Weaned



Base Wt: 705 lbs. Wt Stop: 740 lbs. (35#) Variance: 175 lbs.

Pickup Date: April 13-17 **Estimated Head Count** 69

Slide/Shrink: 2% shrink and slide \$15/cwt topside only

Weigh: Hauled 15 miles, weighed on certified truck scales

Notice to load: 72 hours **Weaned:** 45+ days

Colors: 100% blk/bwf

Flesh: Medium/Light

Muscling: 100% #1

Frame: Medium & Large

Nutrition: Bunk fed 8-10# of 13% commodity feed with free choice pasture, Vigortone mineral, and hay.

Vaccinations: Pyramid 5 Presponse (1x), Bovi-Shield Gold 5 (1x), Cavalry 9 (2x)

Dewormer: Synanthic, Eprinex **Implants:** None

Genetics: 75% or more Angus. Sired by Barnett and Yon Family Farms Angus bulls and out of Angus and SimAngus cows.

Programs: GAP-4; BeefCare; Verified Natural; NHTC; Affidavit

Comments: Broke to bunks and waters. A fancy group of steers that have been weaned for 45 days, are double vaccinated, and all natural. This herd has been built around 10+ years of extensive AI breeding and the cattle have proved it year after year in the feedlots. They know the age of all of their cows and calves can be tracked to each cow with individual birthdates. Would work great to go to grass or feed. Calves are all-natural and seller will sign affidavits as needed. GAP-4 Certificate can transfer at no cost to buyer (GAP#25155, Exp 7/24/26).

MACS Rep: Romaine Cartee, 912-531-0580



Lot 6108 1 Load of STEERS

Price: \$ _____ Buyer # _____

Ward Farms (Brian Ward)
Liberty, NC - 15 miles southeast of Greensboro, NC

Backgrounded, Weaned



Base Wt: 710 lbs. Wt Stop: 735 lbs. (25#) Variance: 150 lbs.

Pickup Date: April 13-18 **Estimated Head Count** 68

Slide/Shrink: No shrink and slide \$15/cwt topside only

Weigh: Hauled 20 miles, weighed on certified MACS ground scales

Notice to load: 48 hours **Weaned:** 150+ days

Colors: 60 hd blk/bwf, 5 hd ch-x, 5 hd red/rwf

Flesh: Medium

Muscling: 95% #1, 5% #1.5

Frame: Medium

Nutrition: Bunk fed 5# of feed (3# corn, 2# DDG) with free choice pasture, mineral, and hay

Vaccinations: Bovi-Shield Gold One Shot (1x), Cavalry 9 (1x), Pinkeye (1x)

Dewormer: Ivermectin (1x), Valbazen (1x) **Implants:** Ralgro (1x)

Genetics: Commercial Angus-based/crossbred.

Programs: No

Comments: Broke to bunks and waters. A good set of backgrounded steers that will work to go to grass or feed. Steers were brought in as 4 weights and backgrounded for over 150 days. Cattle will be gathered, hauled 20 miles to sorting barn, unloaded and then weighed on the ground.

MACS Rep: Marcus Harward, 704-322-0840



Lot 6109 1 Load of STEERS

Price: \$ _____ Buyer # _____

Howey Ranch (Frank Howey)
Troy, NC - 25 miles south of Asheboro, NC



Home-Raised, GAP-4, Verified Natural, NHTC, Backgrounded, Weaned

Base Wt: 725 lbs. Wt Stop: 750 lbs. (25#) Variance: 150 lbs.

Pickup Date: April 10-17 **Estimated Head Count** 67
Slide/Shrink: 2% shrink and slide \$15/cwt topside only
Weigh: Certified MACS ground scales at farm
Notice to load: 72 hours **Weaned:** 90+ days
Colors: 48 hd (72%) blk/bwf, 15 hd red/rwf, 4 hd char-x -- 25% Brah-X (no excessive ear) **Flesh:** Medium
Muscling: 95% #1, 5% #1.5 **Frame:** 90% Medium, 10% Large
Nutrition: 10-12# ph/pd of 12% pellet feed with free choice pasture, hay, and VitaFerm GainSmart minerals and stress tubs.
Vaccinations: Vista Once (1x), Vista 5 (1x), Vision 7 20/20 spur (2x), VitaCharge Drench
Dewormer: Cydectin, Safeguard **Implants:** None
Genetics: 50% or more Angus. Primarily sired by Red Angus and Angus bulls with a few SimAngus bulls. Bulls are high-growth bulls primarily from Bieber, Pieper, EBS, and Black Grove. Out of Angus-based and crossbred cows. 16 head will show 1/16 to 1/8 ear.
Programs: GAP-4; IMI Verified Natural; NHTC; Source & Age; Seller Affidavit
Comments: Broke to bunks and waters. A very good set of high-growth steers that will finish as a big set of feeders. Calves are out of excellent Red Angus and Angus genetics in both the bulls and cows. Calves have been on the VitaFerm program with minerals, drench, and stress tubs. They are all natural and can be EID tagged for verified natural and NHTC with IMI Global. GAP recertification pending audit. Steers were sorted and weighed on March 28th and should be very close on their weights.
MACS Rep: Marcus Harward, 704-322-0840

Programs:



Lot 6110 1 Load of STEERS

Price: \$ _____ Buyer # _____

Johnson & Owens Farm
Snow Camp, NC - 20 miles southeast of Greensboro, NC



Backgrounded, Weaned

Base Wt: 775 lbs. Wt Stop: 805 lbs. (30#) Variance: 135 lbs.

Pickup Date: April 13-17 **Estimated Head Count** 63
Slide/Shrink: 1% shrink and slide \$15/cwt topside only
Weigh: Hauled 5 miles, 3 loads sorted, & weighed on certified MACS ground scales
Notice to load: 48 hours **Weaned:** 90+ days
Colors: 90% blk/bwf, 10% ch-x or red/rwf **Flesh:** Medium
Muscling: 95% #1, 5% #1.5 **Frame:** Medium
Nutrition: Bunk fed 2% of body weight per day of corn and commodity blend feed with free choice mineral, pasture, and hay.
Vaccinations: Vista Once (3x), NasalGen 3 PMH (1x), Ultrabac 7 (2x), Pinkeye (2x)
Dewormer: Safeguard, Ivomec Pour-On & Inject. **Implants:** None
Genetics: Commercial Angus-based/crossbred.
Programs: No
Comments: Broke to bunks and waters. A very good group of background steers that were purchased as 3 & 4 weights from local sale barns, triple vaccinated, and backgrounded on pasture. There are 3 loads (225+ head) that have been running together and were individually weighed to sort three good loads. Need to load all 3 steer loads the same day, will be brought in on load out day, sorted, then weighed.
MACS Rep: Marcus Harward, 704-322-0840

Programs:



Lot 6111 1 Load of STEERS

Price: \$ _____ Buyer # _____

Carmac Farms
 Ramseur, NC - 10 miles east of Asheboro, NC

Backgrounded, Weaned, BQA Certified

Base Wt: 785 lbs. Wt Stop: 810 lbs. (25#) Variance: 200 lbs.



Pickup Date: April 9-17 **Estimated Head Count** 62
Slide/Shrink: No shrink and slide \$15/cwt topside only
Weigh: Hauled 25 miles, sorted, and weighed on the ground
Notice to load: 48 hours **Weaned:** 150+ days
Colors: 85% blk/bwf, 7 hd ch-x, 4 hd red
Muscling: 80% #1, 20% #1.5
Nutrition: Bunk fed 10# ph/pd of soyhulls & DDGs with pasture, mineral, and hay.
Vaccinations: Bovi-Shield Gold One Shot (1x), Bovi-Shield Gold 5 (1x), Cavalry 9 (2x)
Dewormer: Cydectin (2x) **Implants:** None
Genetics: Commercial Angus-based/crossbred.
Programs: No
Comments: Broke to bunks and waters. A good set of green yearling steers that will work to go to grass or feed. Steers were bought as 3 and 4 weights and backgrounded on mainly pasture. There is one head with a blue eye. There are 85 head to sort a lot out of.
MACS Rep: Marcus Harward, 704-322-0840

Flesh: Medium/Light
Frame: 95% Medium, 5% Large

Programs:



Lot 6112 1 Load of STEERS

Price: \$ _____ Buyer # _____

Sinking Springs Farm
 Middlebrook, VA - 10 miles south of Staunton, VA

Home-Raised, GAP-4, Verified Natural, Backgrounded, Weaned

Base Wt: 790 lbs. Wt Stop: 825 lbs. (35#) Variance: 150 lbs.



Pickup Date: April 13-17 **Estimated Head Count** 61
Slide/Shrink: 2% shrink and slide \$15/cwt topside only
Weigh: Hauled 5 miles, weighed on certified truck scales
Notice to load: 72 hours **Weaned:** 60+ days
Colors: 98% blk/bwf, 1 hd ch-x
Muscling: 100% #1
Nutrition: Bunk fed silage-based TMR with free choice mineral, pasture, and hay.
Vaccinations: Pyramid 5 Presponse (3x), Vision 7 (2x)
Dewormer: LongRange (1x), Synanthic (2x), Cydectin (2x) **Implants:** None
Genetics: 75% or more Angus. Sired by high performing Angus and SimAngus bulls and out of Angus-based cows. About half of the steers are out of AI sires.
Programs: GAP-4; IMI Verified Natural; NHTC; Source & Age; Seller Affidavit
Comments: Broke to bunks and waters. A fancy set of Northern-type steers that are weaned, have been triple vaccinated, and qualify as all-natural. In the past these cattle have fed out as a high percentage high choice and prime and will make a big set of feeders. GAP 4 certificate can transfer at no cost to buyer. Cattle can be EID tagged for verified natural if needed. (GAP#25012, Exp 6/24/26)
MACS Rep: Marcus Harward, 704-322-0840

Flesh: Medium
Frame: Medium

Programs:



Lot 6113 1 Load of STEERS

Price: \$ _____ Buyer # _____

Hemric Farms (Van Hemric)
Ronda, NC - 40 miles northwest of Statesville, NC

Home-Raised, GAP-4, Affidavit Natural, Backgrounded, Weaned, BQA Cert.



Base Wt: 815 lbs. Wt Stop: 845 lbs. (30#) Variance: 150 lbs.

Pickup Date: April 13-18 **Estimated Head Count** 60

Slide/Shrink: 2% shrink and slide \$15/cwt topside only

Weigh: Weighed on ground scales at farm

Notice to load: 48 hours **Weaned:** 100+ days

Colors: 57 hd blk/bwf, 2 hd ch-x, 1 hd red

Flesh: Medium

Muscling: 95% #1, 5% #1.5

Frame: Medium

Nutrition: Bunk fed TMR of corn silage, DDGs, hay, and mineral on pasture.

Vaccinations: Pyramid 5 Presponse (1x), Nasalgen 3 (1x), Triangle 10 (1x), Covexin 8 (2x), Pinkeye (1x)

Dewormer: Cydectin (2x) **Implants:** None

Genetics: 50-75% Angus. Sired by purebred Angus bulls out of predominantly Angus-based cows.

Programs: GAP-4; Seller Affidavit

Comments: Broke to bunks and waters. A fancy set of GAP, all natural steers that are high percentage Angus, double vaccinated, weaned over 100 days. GAP-4 certificate can transfer at no cost to buyer (GAP#25523; Exp 8/28/26). Also willing to sign additional natural affidavits. There may be 1-2 with a blue eye.

MACS Rep: Jimmy Dagenhart, 704-425-3587

Programs:    

Lot 6114 1 Load of STEERS

Price: \$ _____ Buyer # _____

Howey Ranch (Frank Howey)
Troy, NC - 25 miles south of Asheboro, NC

Home-Raised, GAP-4, Verified Natural, NHTC, Backgrounded, Weaned



Base Wt: 840 lbs. Wt Stop: 865 lbs. (25#) Variance: 150 lbs.

Pickup Date: April 10-17 **Estimated Head Count** 58

Slide/Shrink: 2% shrink and slide \$15/cwt topside only

Weigh: Certified MACS ground scales at farm

Notice to load: 72 hours **Weaned:** 90+ days

Colors: 38 hd (62%) blk/bwf, 18 hd red/rwf, 5 hd char-x -- 30% Brah-X (no excessive ear) **Flesh:** Medium

Muscling: 95% #1, 5% #1.5

Frame: 90% Medium, 10% Large

Nutrition: 10-12# ph/pd of 12% pellet feed with free choice pasture, hay, and VitaFerm GainSmart minerals and stress tubs.

Vaccinations: Vista Once (1x), Vista 5 (1x), Vision 7 20/20 spur (2x), VitaCharge Drench

Dewormer: Cydectin, Safeguard **Implants:** None

Genetics: 50% or more Angus. Primarily sired by Red Angus and Angus bulls with a few SimAngus bulls. Bulls are high-growth bulls primarily from Bieber, Pieper, EBS, and Black Grove. Out of Angus-based and crossbred cows. 18 head will show 1/16 to 1/8 ear.

Programs: GAP-4; IMI Verified Natural; NHTC; Source & Age; Seller Affidavit

Comments: Broke to bunks and waters. A very good set of high-growth steers that will finish as a big set of feeders. Calves are out of excellent Red Angus and Angus genetics in both the bulls and cows. Calves have been on the VitaFerm program with minerals, drench, and stress tubs. They are all natural and can be EID tagged for verified natural and NHTC with IMI Global. GAP recertification pending audit. Steers were sorted and weighed on March 28th and should be very close on their weights.

MACS Rep: Marcus Harward, 704-322-0840

Programs:           

Lot 6115 1 Load of STEERS

Price: \$ _____ Buyer # _____

Rocking H Cattle Company
Norwood, NC - 40 miles east of Charlotte, NC

Home-Raised, GAP-4, CARE, Verified Natural, NHTC, Backgrounded, Weaned



Base Wt: 845 lbs. Wt Stop: 870 lbs. (25#) Variance: 150 lbs.

Pickup Date: April 9-17 **Estimated Head Count** 57

Slide/Shrink: 2% shrink and slide \$15/cwt topside only

Weigh: Certified ground scales at farm

Notice to load: 24-48 hours **Weaned:** 100+ days

Colors: 55 hd (95%) blk/bwf, 3 hd ch-x

Flesh: Medium

Muscling: 90% #1, 10% #1.5

Frame: Medium

Nutrition: Bunk fed TMR of corn silage, ground hay, soyhulls, wet corn gluten, corn, and mineral mixed in ration.

Vaccinations: Vista Once (1x), Vista 5 (1x), Vision 7 spur (1x), Vision 7 somnus (1x), Inforce 3 (1x)

Dewormer: Safeguard (2x), Cydectin (1x) **Implants:** None

Genetics: 50-75% Angus. Sired by Angus & SimAngus bulls and out of Angus-based, SimAngus, and Char-X cows. Majority of the sires have EPDs in the top 30% or better for growth, marbling, and ribeye.

Programs: GAP-4; BeefCare; IMI Verified Natural; NHTC; Source & Age; Affidavit

Comments: Broke to bunks and waters. BQA Certified. A good set of early 2025 born steers with several years of high-performing genetics behind them. Angus and continental-influenced cattle that will grow big. Past years these calves have finished out as high percentage Choice and Prime. Have had three rounds of vaccinations, were brought in from several pastures and weaned together for 90+ days. Natural certifications are able to transfer at no cost to the buyer. (GAP#25458, Exp 7/8/26). **CARE certified and Rocking H has not previously or are currently involved in selling any carbon credits.

MACS Rep: Catherine Edwards, 704-550-7920

Programs:



Lot 6116 1 Load of STEERS

Price: \$ _____ Buyer # _____

W & W Farms
Randleman, NC - 15 miles south of Greensboro, NC

Affidavit Natural, Backgrounded, Weaned



Base Wt: 845 lbs. Wt Stop: 870 lbs. (25#) Variance: 150 lbs.

Pickup Date: April 14-17 **Estimated Head Count** 57

Slide/Shrink: 2% shrink and slide \$15/cwt topside only

Weigh: Certified ground scales at farm

Notice to load: 48 hours **Weaned:** 100+ days

Colors: 50 hd (88%) blk/bwf, 5 hd red, 2 hd rwf

Flesh: Medium

Muscling: 95% #1, 5% #1.5

Frame: 95% Medium, 5% Large

Nutrition: Bunk fed TMR of silage, wet corn gluten, soyhulls, and cotton trash with free choice pasture, mineral, and hay.

Vaccinations: Bovi-Shield Gold 5 (1x), CattleMaster (1x), Cavalry 9 (2x)

Dewormer: Dectomax (2x) **Implants:** None

Genetics: Commercial Angus-based/crossbred.

Programs: Seller Affidavit

Comments: Broke to bunks and waters. Purchased from two producers and backgrounded together on pasture for over 100 days; running on grass with a TMR feed supplement. Owner affidavit natural - signed natural affidavit from original producer and W&W that can transfer with the cattle. Cattle are carrying just a medium flesh.

MACS Rep: Marcus Harward, 704-322-0840

Programs:



Lot 6117A 2 Loads of STEERS

Price: \$ _____ Buyer # _____

Lot 6117B 2 Loads of STEERS

Price: \$ _____ Buyer # _____

Donald Chriscoe Farm
Asheboro, NC - 40 miles south of Greensboro, NC

Affidavit Natural, Backgrounded, Weaned

Base Wt: 880 lbs. Wt Stop: 905 lbs. (25#) Variance: 175 lbs.



Pickup Date: April 9-17 **Estimated Head Count** 220

Slide/Shrink: 2% shrink and slide \$15/cwt topside only

Weigh: Certified ground scales at farm

Notice to load: 48 hours **Weaned:** 150+ days

Colors: 202 hd (92%) blk/bwf, 9 hd ch-x, 5 hd red, 4 hd rwf

Flesh: Medium

Muscling: 95% #1, 5% #1.5

Frame: Medium

Nutrition: Bunk fed haylage and TMR (wet corn gluten, cotton) with access to mineral and hay.

Vaccinations: Vista 5 (2x), Nuplura (1x), Vision 7 20/20 (1x), Ocuguard Pinkeye (1x)

Dewormer: Ivomec Inject. (2x) **Implants:** None

Genetics: Commercial Angus-based. Mainly sired by Angus and SimAngus bulls.

Programs: Seller Affidavit Natural

Comments: Broke to bunks and waters. Reputational calves purchased from local producers and backgrounded at Chriscoe's for well over 100 days. Owner affidavit natural - signed natural affidavits from original producers that will transfer with the cattle. **BUYER HAS THE OPTION TO TAKE 2 OR 4 LOADS.**

MACS Rep: Marcus Harward, 704-322-0840

Programs:    

Lot 6118 1 Load of STEERS

Price: \$ _____ Buyer # _____

Vannoy Family Farms
Sparta, NC - 35 miles north of Wilkesboro, NC

Home-Raised, GAP-4, Affidavit Natural, Backgrounded, Weaned

Base Wt: 900 lbs. Wt Stop: 925 lbs. (25#) Variance: 150 lbs.



Pickup Date: April 13-17 **Estimated Head Count** 54

Slide/Shrink: 1% shrink and slide \$12/cwt topside only

Weigh: Hauled 15 miles, weighed on the ground on certified scales

Notice to load: 48 hours **Weaned:** 100+ days

Colors: 100% blk/bwf

Flesh: Medium

Muscling: 95% #1, 5% #1.5

Frame: Medium

Nutrition: Bunk fed 5# commodity pellets every few days with free choice pasture, mineral, and hay

Vaccinations: Pyramid 5 Presponse (1x), Inforce 3 (1x), Vision 8 somnus (1x), Vision 7 (1x), Pinkeye (1x)

Dewormer: Eprinex (1x), Longrange (1x) **Implants:** None

Genetics: 65-90% Angus. Sired by Angus bulls out of black Angus-based cows.

Programs: GAP-4; Seller Affidavit

Comments: Broke to bunks and waters. A fancy set of natural and GAP steers that will make an excellent set of feeding cattle. They have not been pushed hard, running out on pasture and getting hand fed to keep them coming up. May be 1 or 2 with a blue eye. GAP-4 certificate can transfer at no cost to buyer.

MACS Rep: Jimmy Dagenhart, 704-425-3587

Programs:    

Lot 6119 1 Load of STEERS

Price: \$ _____ Buyer # _____

Rocking H Cattle Company
Norwood, NC - 40 miles east of Charlotte, NC

Home-Raised, GAP-4, Verified Natural, NHTC, Backgrounded, Weaned



Base Wt: 900 lbs. Wt Stop: 925 lbs. (25#) Variance: 150 lbs.

Pickup Date: April 9-17 **Estimated Head Count** 54

Slide/Shrink: 2% shrink and slide \$12/cwt topside only

Weigh: Certified ground scales at farm

Notice to load: 24-48 hours **Weaned:** 100+ days

Colors: 39 hd (75%) blk/bwf, 3 hd ch-x, 12 hd red/rwf (15% showing a little ear) **Flesh:** Medium

Muscling: 95% #1, 5% #1.5 **Frame:** 90% Medium, 10% Large

Nutrition: Bunk fed TMR of corn silage, ground hay, soyhulls, wet corn gluten, corn, and mineral mixed in ration.

Vaccinations: Vista Once (1x), Vista 5 (1x), Vision 7 20/20 spur (2x), Inforce 3 (1x)

Dewormer: Safeguard (2x), Cydectin (1x) **Implants:** None

Genetics: 50-75% Angus. Sired by Angus, SimAngus bulls, and Red Angus bulls and out of Angus-based, SimAngus, and Char-X cows. 15% show 1/16 to 1/4 ear

Programs: GAP-4; IMI Verified Natural; NHTC; Source & Age; Affidavit

Comments: Broke to bunks and waters. BQA Certified. A good set of early 2025 born steers with several years of high-performing genetics behind them. Angus and and continental-influenced cattle that will grow big. Past years these calves have finished out as high percentage Choice and Prime. Have had three rounds of vaccinations, were brought in from several pastures and weaned together for 90+ days. Natural certifications are able to transfer at no cost to the buyer. (GAP#25458, Exp 7/8/26).

MACS Rep: Catherine Edwards, 704-550-7920



Lot 6120 1 Load of STEERS

Price: \$ _____ Buyer # _____

Falling Creek Cattle Co
Grantham, NC - 50 miles southeast of Raleigh, NC

Purchased Locally, Backgrounded, Weaned



Base Wt: 960 lbs. Wt Stop: 995 lbs. (35#) Variance: 150 lbs.

Pickup Date: April 13-17 **Estimated Head Count** 51

Slide/Shrink: 2% shrink and slide \$12/cwt topside only

Weigh: Hauled 10 miles, weighed on the truck on certified scales

Notice to load: 48 hours **Weaned:** 150+ days

Colors: 100% blk/bwf **Flesh:** Medium

Muscling: 95% #1, 5% #1.5 **Frame:** Medium

Nutrition: Bunk fed TMR (corn silage, cotton seed, chopped hay) with mineral.

Vaccinations: Vista Once (1x), Vista 5 (1x), Vision 7 20/20 (2x)

Dewormer: Ivermec (1x), Safeguard (1x), Cydectin (1x) **Implants:** Ralgro (1x)

Genetics: Commercial Angus-based/crossbred.

Programs: No

Comments: Broke to bunks and waters. Docile. Purchased from local producers as 4 & 5-weights and weaned and backgrounded for over 150-200 days. Fancy steers ready to go on feed carrying just a medium flesh. May be 1-2 with a blue eye.

MACS Rep: Jeff Martin, 910-379-9173



Lot 6121 1 Load of STEERS

Price: \$ _____ Buyer # _____

David & Brady Kirk (B&D Farms)
Lancaster, SC - 35 miles southeast of Charlotte, NC

Home-Raised, GAP-4, Verified Natural, Backgrounded, Weaned



Base Wt: 990 lbs. Wt Stop: 1025 lbs. Variance: 150 lbs.

Pickup Date: April 9-17 **Estimated Head Count** 49

Slide/Shrink: 2% shrink and slide \$12/cwt topside only

Weigh: Hauled 3 miles, weighed on ground scales.

Notice to load: 48 hours **Weaned:** 150+ days

Colors: 40% blk/bwf, 40% ch-x, 20% red/rwf

Flesh: Medium

Muscling: 90% #1, 10% #1.5

Frame: 95% Medium, 5% Med-Small

Nutrition: Bunk fed 3-4# ph/pd of commodity pellet feed with free choice mineral, pasture, and hay

Vaccinations: Bovi-Shield Gold One Shot (1x), Bovi-Shield Gold 5 (1x), Ultrabac 7 somubac (1x), Ultrabac 7 (1x)

Dewormer: Safeguard, Ivermectin **Implants:** None

Genetics: 50%+ Angus. Out of Angus-based cows and sired by Angus, Charolais, or Hereford bulls. A few with nub horns or scurs.

Programs: GAP-4; IMI Verified Natural; NHTC; Source and Age; Seller Affidavit

Comments: Broke to bunks and waters. Hand fed and have not been pushed at all, weaned well over 100 days, and carrying just a medium grass flesh. Will be a couple with nub horns and may be a couple with a blue eye. There are 80 head to sort a load out of. GAP-4 certificate can transfer at no cost to buyer. (GAP#24849, Exp. 6/6/26).

MACS Rep: Chuck Doolittle, 704-221-1447



Lot 6122 1 Load of HEIFERS

Price: \$ _____ Buyer # _____

AMB Farms (Andrew Williams)
Ramseur, NC - 10 miles east of Asheboro, NC

Backgrounded, Weaned, BQA Certified



Base Wt: 650 lbs. Wt Stop: 685 lbs. (35#) Variance: 150 lbs.

Pickup Date: April 10-17 **Estimated Head Count** 77

Slide/Shrink: 2% shrink and slide \$17/cwt topside only

Weigh: Hauled 10 miles, weighed on certified MACS ground scales

Notice to load: 48 hours **Weaned:** 150+ days

Colors: 72 hd blk/bwf, 5 hd chx

Flesh: Medium

Muscling: 90% #1, 10% #1.5

Frame: Medium

Nutrition: Bunk fed 10# ph/pd of 16% pellet feed with pasture, mineral, and hay.

Vaccinations: Vista Once (1x), Vista 5 (1x), Nasalgen 3 (1x), Vision 7 somnus (1x), Vision 7 20/20 (1x)

Dewormer: Safeguard, Ivermectin **Implants:** None

Genetics: Commercial Angus-based/crossbred.

Programs: No

Heifers: Open, not palpated.

Comments: Broke to bunks and waters. A good set of green, 6 weight heifers that will work to go to grass or feed. Heifers were bought as 3 and 4 weights and backgrounded on mainly pasture. Heifers have been hand fed, getting a 16% pellet feed.

MACS Rep: Marcus Harward, 704-322-0840



Lot 6123 1 Load of HEIFERS

Price: \$ _____ Buyer # _____

Johnson & Owens Farm
Snow Camp, NC - 20 miles southeast of Greensboro, NC

Backgrounded, Weaned

Base Wt: 660 lbs. Wt Stop: 690 lbs. (30#) Variance: 100 lbs.



Pickup Date: April 13-17 **Estimated Head Count** 73

Slide/Shrink: 1% shrink and slide \$17/cwt topside only

Weigh: Hauled 5 miles, 2 loads sorted, & weighed on certified MACS ground scales

Notice to load: 48 hours **Weaned:** 90+ days

Colors: 90% blk/bwf, 10% ch-x or red/rwf

Flesh: Medium

Muscling: 95% #1, 5% #1.5

Frame: Medium

Nutrition: Bunk fed 2% of body weight per day of corn and commodity blend feed with free choice mineral, pasture, and hay.

Vaccinations: Vista Once (3x), NasalGen 3 PMH (1x), Ultrabac 7 (2x), Pinkeye (2x), Estrumate (2x)

Dewormer: Safeguard, Ivomec Pour-On & Inject. **Implants:** None

Genetics: Commercial Angus-based/crossbred.

Programs: No

Heifers: Open, not palpated, given 2 rounds of Estrumate.

Comments: Broke to bunks and waters. A very good group of background heifers that were purchased as 4 weights from local sale barns, triple vaccinated, and backgrounded on pasture. Heifers were individually weighed and should be very close on weights. **Can not load on same day as 3 steer loads selling earlier in the sale.

MACS Rep: Marcus Harward, 704-322-0840

Programs:  

Lot 6124 1 Load of HEIFERS

Price: \$ _____ Buyer # _____

Johnson & Owens Farm
Snow Camp, NC - 20 miles southeast of Greensboro, NC

Backgrounded, Weaned

Base Wt: 695 lbs. Wt Stop: 725 lbs. (30#) Variance: 65 lbs.



Pickup Date: April 13-17 **Estimated Head Count** 70

Slide/Shrink: 1% shrink and slide \$17/cwt topside only

Weigh: Hauled 5 miles, 2 loads sorted, & weighed on certified MACS ground scales

Notice to load: 48 hours **Weaned:** 90+ days

Colors: 90% blk/bwf, 10% ch-x or red/rwf

Flesh: Medium

Muscling: 95% #1, 5% #1.5

Frame: Medium

Nutrition: Bunk fed 2% of body weight per day of corn and commodity blend feed with free choice mineral, pasture, and hay.

Vaccinations: Vista Once (3x), NasalGen 3 PMH (1x), Ultrabac 7 (2x), Pinkeye (2x), Estrumate (2x)

Dewormer: Safeguard, Ivomec Pour-On & Inject. **Implants:** None

Genetics: Commercial Angus-based/crossbred.

Programs: No

Heifers: Open, not palpated, given 2 rounds of Estrumate.

Comments: Broke to bunks and waters. A very good group of background heifers that were purchased as 4 weights from local sale barns, triple vaccinated, and backgrounded on pasture. Heifers were individually weighed and should be very close on weights. **Can not load on same day as 3 steer loads selling earlier in the sale.

MACS Rep: Marcus Harward, 704-322-0840

Programs:  

Lot 6125 2 Loads of HEIFERS

Price: \$ _____ Buyer # _____

Howey Ranch (Frank Howey)
Troy, NC - 25 miles south of Asheboro, NC



Home-Raised, GAP-4, Verified Natural, NHTC, Backgrounded, Weaned

Base Wt: 740 lbs. Wt Stop: 765 lbs. (25#) Variance: 150 lbs.

Pickup Date: April 10-17 **Estimated Head Count** 131

Slide/Shrink: 2% shrink and slide \$15/cwt topside only

Weigh: Certified MACS ground scales at farm

Notice to load: 72 hours **Weaned:** 90+ days

Colors: 106 hd (80%) blk/bwf, 20 hd red/rwf, 5 hd char-x -- 15% Brah-X (no excessive ear) **Flesh:** Medium

Muscling: 95% #1, 5% #1.5 **Frame:** 90% Medium, 10% Large

Nutrition: 10-12# ph/pd of 12% pellet feed with free choice pasture, hay, and VitaFerm GainSmart minerals and stress tubs.

Vaccinations: Vista Once (1x), Vista 5 (1x), Vision 7 20/20 spur (2x), VitaCharge Drench

Dewormer: Cydectin, Safeguard **Implants:** None

Genetics: 50% or more Angus. Primarily sired by Red Angus and Angus bulls with a few SimAngus bulls. Bulls are high-growth bulls primarily from Bieber, Pieper, EBS, and Black Grove. Out of Angus-based and crossbred cows. 20 head will show 1/16 to 1/8 ear.

Programs: GAP-4; IMI Verified Natural; NHTC; Source & Age; Seller Affidavit

Heifers: Vet palpated, guaranteed open

Comments: Broke to bunks and waters. A very good set of high-growth heifers that will finish as a big set of feeders. Calves are out of excellent Red Angus and Angus genetics in both the bulls and cows. Calves have been on the VitaFerm program with minerals, drench, and stress tubs. They are all natural and can be EID tagged for verified natural and NHTC with IMI Global. GAP recertification pending audit. Heifers were sorted and weighed on March 28th and should be very close on their weights.

MACS Rep: Marcus Harward, 704-322-0840



Lot 6126 1 Load of HEIFERS

Price: \$ _____ Buyer # _____

Cox Land & Cattle (Will Cox)
Coleridge, NC - 15 miles southeast of Asheboro, NC



Home-Raised & Purchased, Affidavit Natural, Backgrounded, Weaned

Base Wt: 745 lbs. Wt Stop: 775 lbs. (30#) Variance: 125 lbs.

Pickup Date: April 10-17 **Estimated Head Count** 68

Slide/Shrink: 2% shrink and slide \$15/cwt topside only

Weigh: Certified MACS ground scales at farm

Notice to load: 48 hours **Weaned:** 120+ days

Colors: 60 hd blk/bwf, 5 hd ch-x, 3 hd red **Flesh:** Medium

Muscling: 95% #1, 5% #1.5 **Frame:** Medium

Nutrition: Bunk fed a TMR of corn silage, DDG, wet corn gluten, chopped hay, with a balancer mineral pack.

Vaccinations: Vista Once (1x), Vista 5 (1x), NasalGen 3 PMH (1x), Vision 7 somnus (1x), Vision 7 20/20 (1x), Endovac Beef (2x)

Dewormer: Safeguard (1x), Pour-On (2x) **Implants:** None

Genetics: 65%+ Angus. Sired by Angus bulls out of Angus-X cows.

Programs: Seller Affidavit Natural

Heifers: Palpated, guaranteed open.

Comments: Broke to bunks and waters. A good load of northern-type feeding heifers that are weaned 120+ days and all-natural. Buyer will sign all-natural affidavits as needed. Part of these are home-raised and the rest were locally purchased to make a full load. All have been running together since weaning. There are 68 head for the load to make about 51,000 lbs.

MACS Rep: Marcus Harward, 704-322-0840



Lot 6127 0.5 Load of HEIFERS

Price: \$ _____ Buyer # _____

Vannoy Family Farms
Sparta, NC - 35 miles north of Wilkesboro, NC

Home-Raised, GAP-4, Affidavit Natural, Backgrounded, Weaned

Base Wt: 735 lbs. Wt Stop: 760 lbs. (25#) Variance: 150 lbs.



Pickup Date: April 13-17 **Estimated Head Count** 30

Slide/Shrink: 1% shrink and slide \$15/cwt topside only

Weigh: Hauled 15 miles, weighed on the ground on certified scales

Notice to load: 48 hours **Weaned:** 100+ days

Colors: 100% blk/bwf

Flesh: Medium

Muscling: 95% #1, 5% #1.5

Frame: Medium

Nutrition: Bunk fed 5# commodity pellets every few days with free choice pasture, mineral, and hay

Vaccinations: Pyramid 5 Presponse (1x), Inforce 3 (1x), Vision 8 somnus (1x), Vision 7 (1x), Pinkeye (1x)

Dewormer: Eprinex (1x), Longrange (1x) **Implants:** None

Genetics: 65-90% Angus. Sired by Angus bulls out of black Angus-based cows.

Programs: GAP-4; Seller Affidavit

Heifers: Open, not palpated.

Comments: Broke to bunks and waters. A fancy set of natural and GAP heifers that will make an excellent set of feeding cattle or a good set of replacements to breed. They have not been pushed hard, running out on pasture and getting hand fed to keep them coming up. May be 1 or 2 with a blue eye. GAP-4 certificate can transfer at no cost to buyer. A partial load at about 23,000 lbs.

MACS Rep: Jimmy Dagenhart, 704-425-3587

Programs:



Lot 6128 1 Load of HEIFERS

Price: \$ _____ Buyer # _____

Rocking H Cattle Company
Norwood, NC - 40 miles east of Charlotte, NC

Home-Raised, GAP-4, CARE, Verified Natural, NHTC, Backgrounded, Weaned

Base Wt: 780 lbs. Wt Stop: 805 lbs. (25#) Variance: 175 lbs.



Pickup Date: April 13-17 **Estimated Head Count** 62

Slide/Shrink: 2% shrink and slide \$15/cwt topside only

Weigh: Certified ground scales at farm

Notice to load: 24-48 hours **Weaned:** 75+ days

Colors: 60 hd (97%) blk/bwf, 2 hd ch-x

Flesh: Medium

Muscling: 90% #1, 10% #1.5

Frame: Medium

Nutrition: Bunk fed TMR of corn silage, ground hay, soyhulls, wet corn gluten, corn, and mineral mixed in ration.

Vaccinations: Vista Once (1x), Vista 5 (1x), Vision 7 spur (1x), Vision 7 somnus (1x), Inforce 3 (1x)

Dewormer: Safeguard (2x), Cydectin (1x) **Implants:** None

Genetics: 50-75% Angus. Sired by Angus & SimAngus bulls and out of Angus-based, SimAngus, and Char-X cows. Majority of the sires have EPDs in the top 30% or better for growth, marbling, and ribeye.

Programs: GAP-4; BeefCare; IMI Verified Natural; NHTC; Source & Age; Affidavit

Heifers: Vet palpated, guaranteed open.

Comments: Broke to bunks and waters. BQA Certified. A good set of Spring 2025 born heifers with several years of high-performing genetics behind them that could feed or make a nice set of replacement females. Past years these calves have finished out as high percentage Choice and Prime. Have been double vaccinated and were brought in from several pastures and weaned together for 75+ days. Natural certifications are able to transfer at no cost to the buyer. (GAP#25458, Exp 7/8/26). **CARE certified and Rocking H has not previously or are currently involved in selling any carbon credits.

MACS Rep: Catherine Edwards, 704-550-7920

Programs:

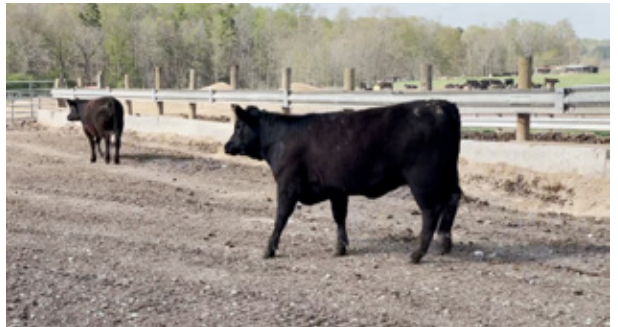


Lot 6129 1 Load of HEIFERS

Price: \$ _____ Buyer # _____

Donald Chriscoe Farm
Asheboro, NC - 40 miles south of Greensboro, NC

Affidavit Natural, Backgrounded, Weaned



Base Wt: 790 lbs. Wt Stop: 815 lbs. (25#) Variance: 150 lbs.

Pickup Date: April 9-17 **Estimated Head Count** 61

Slide/Shrink: 2% shrink and slide \$15/cwt topside only

Weigh: Certified ground scales at farm

Notice to load: 48 hours **Weaned:** 120+ days

Colors: 57 hd (93%) blk/bwf, 3 hd ch-x, 1 hd red

Flesh: Medium

Muscling: 95% #1, 5% #1.5

Frame: Medium

Nutrition: Bunk fed haylage and TMR (wet corn gluten, cotton) with access to mineral and hay.

Vaccinations: Vista 5 (2x), Nuplura (1x), Vision 7 20/20 (1x), Ocuguard Pinkeye (1x)

Dewormer: Ivomec Inject. (2x) **Implants:** None

Genetics: Commercial Angus-based. Mainly sired by Angus and SimAngus bulls.

Programs: Seller Affidavit Natural

Heifers: Palpated, guaranteed open

Comments: Broke to bunks and waters. Reputational calves purchased from local producers and backgrounded at Chriscoe's for well over 100 days. Owner affidavit natural - signed natural affidavits from original producers that will transfer with the cattle. Selling two loads as one lot.

MACS Rep: Marcus Harward, 704-322-0840



Lot 6130 1 Load of HEIFERS

Price: \$ _____ Buyer # _____

Hemric Farms (Van Hemric)
Ronda, NC - 40 miles northwest of Statesville, NC

Home-Raised, GAP-4, Affidavit Natural, Backgrounded, Weaned, BQA Cert.



Base Wt: 800 lbs. Wt Stop: 830 lbs. (30#) Variance: 150 lbs.

Pickup Date: April 13-18 **Estimated Head Count** 61

Slide/Shrink: 2% shrink and slide \$15/cwt topside only

Weigh: Weighed on ground scales at farm

Notice to load: 48 hours **Weaned:** 100+ days

Colors: 60 hd blk/bwf, 1 hd ch-x

Flesh: Medium

Muscling: 95% #1, 5% #1.5

Frame: Medium

Nutrition: Bunk fed TMR of corn silage, DDGs, hay, and mineral.

Vaccinations: Pyramid 5 Presponse (1x), Nasalgen 3 (1x), Triangle 10 (1x), Covexin 8 (2x), Pinkeye (1x)

Dewormer: Cydectin (2x) **Implants:** None

Genetics: 50-75% Angus. Sired by purebred Angus bulls out of predominantly Angus-based cows.

Programs: GAP-4; Seller Affidavit

Heifers: Vet palpated, guaranteed open

Comments: Broke to bunks and waters. A good set of verified natural, GAP-4 heifers that are high percentage Angus, double vaccinated, weaned over 120 days. GAP certificate can transfer at no cost to buyer (GAP#22553; Exp 5/27/25). Heifers are EID tagged for verified natural and NHTC through BeefTraxx. There may be 1 or 2 with a blue eye.

MACS Rep: Jimmy Dagenhart, 704-425-3587



Lot 6131 1 Load of HEIFERS

Price: \$ _____ Buyer # _____

McDannald Cattle Company
Fountain Inn, SC - 20 miles southeast of Greenville, SC

Backgrounded, Weaned

Base Wt: 850 lbs. Wt Stop: 875 lbs. (25#) Variance: 100 lbs.

Pickup Date: April 9-17 **Estimated Head Count** 57
Slide/Shrink: 2% shrink and slide \$15/cwt topside only
Weigh: Certified ground scales at farm
Notice to load: 48 hours **Weaned:** 120+ days
Colors: 59 hd blk/bwf, 2 hd ch-x, 1 hd red
Muscling: 95% #1, 5% #1.5
Nutrition: Bunk fed 25# ph/pd of TMR (silage, corn gluten, soyhulls) with free choice mineral, pasture, and hay.
Vaccinations: Vista Once (1x), Vista 5 (1x), Cavalry 9 (2x)
Dewormer: Dectomax Inj (1x), Safeguard (1x) **Implants:** None
Genetics: Commercial Angus-based/crossbred.
Programs: No
Heifers: Open, not palpated.
Comments: Broke to bunks and waters. A very good group of calves that were purchased 90+ days ago, brought in, vaccinated and all weaned and running together on grass lots. Heifers have been double vaccinated and not implanted. A very good set of heifers ready to go to feed.
MACS Rep: David McDannald, 864-360-0481



Flesh: Medium

Frame: Medium

Programs:



Lot 6132 1 Load of HEIFERS

Price: \$ _____ Buyer # _____

Langley Farms
Grantville, NC - 20 miles south of Greensboro, NC

Backgrounded, Weaned

Base Wt: 925 lbs. Wt Stop: 950 lbs. (25#) Variance: 150 lbs.

Pickup Date: April 14-17 **Estimated Head Count** 52
Slide/Shrink: 2% shrink and slide \$15/cwt topside only
Weigh: Certified ground scales at farm
Notice to load: 48 hours **Weaned:** 150+ days
Colors: 80 head to sort from - 64 hd blk/bwf, 12 hd ch-x, 2 hd red, 2 hd rwf **Flesh:** Medium
Muscling: 95% #1, 5% #1.5 **Frame:** Medium
Nutrition: Bunk fed TMR (silage, wet corn gluten, soyhulls, and gin trash). Free choice mineral, pasture, and hay.
Vaccinations: Bovi-Shield Gold 5 (1x), CattleMaster (1x), Cavalry 9 (2x), Lutalyse & Dexamethasone
Dewormer: Dectomax (2x) **Implants:** None
Genetics: Commercial Angus-based/crossbred. NO cattle with ear will be on the load.
Programs: No
Heifers: Open, have not been palpated. Given lut and dex as 5-6 weights.
Comments: Broke to bunks and waters. Purchased as 5 weights and backgrounded on pasture and getting a TMR silage feed. May be a couple with a blue eye. Heifers have not been palpated but were all give lut and dex on arrival at 500-600 lbs. NO ear heifers will be on the load.
MACS Rep: Marcus Harward, 704-322-0840



Programs:



Lot 6133 1 Load of STRS/HFRS

Price: \$ _____ Buyer # _____

Black Farms (Wayne & Henry Black)
Prosperity, SC - 40 miles west of Columbia, SC

Home-Raised, GAP-4, Verified Natural, Backgrounded, Weaned, BQA Cert.



~28 Steers Wt: 900 lbs. Wt. Stop: 935 lbs. (35#) Variance: 150 lbs.
~28 Hfrs Wt: 925 lbs. Wt. Stop: 960 lbs. (35#) Variance: 150 lbs.
Heifers sell \$15/cwt back

Pickup Date: April 13-17
Slide/Shrink: 2% shrink and slide \$12/cwt topside only
Weigh: Certified MACS ground scales at farm
Notice: 48 hours **Weaned:** 90+ days
Colors: 98% blk/bwf, 1 hd ch-x (steer)
Muscling: 95% #1, 5% #1.5
Flesh: Medium
Frame: Medium
Nutrition: Bunk fed 8-10# ph/pd of 13% CPC grower feed with free choice Purina Wind & Rain mineral, pasture, and hay
Vaccinations: Vista Once (1x), Vista 5 (1x), Vision 7 somnus (2x)
Dewormer: Eprinex (2x) **Implants:** None
Genetics: 50-75% Angus. Sired by Angus bulls from Yon & Clemson and out of Angus, Char-X, & Sim-X cows.
Programs: GAP-4; BeefTraxx Verified Natural; NHTC; Source & Age; Seller Affidavit
Preg-checked: Vet palpated, guaranteed open.
Comments: Broke to bunks and waters. A very fancy set of reputational steers & heifers, all born last fall and qualify as all-natural. EID tagged for verified natural. Calves are certified for GAP-4; GAP certificate owned by Pineland Farms and can transfer at buyer's expense (GAP#24603, Exp 4/19/26). Member of Saluda County Cattlemen's Assoc.
MACS Rep: Austin Landreth, 864-484-7153

Programs:

Lot 6134 0.5 Load of STRS/HFRS

Price: \$ _____ Buyer # _____

Wall Family Farms (Pete Wall)
Sylvania, GA - 15 miles north of Statesboro, GA

Home-Raised, GAP-4, BeefCare, Natural, Backgrounded, Weaned



~8 Steers Wt: 500 lbs. Wt. Stop: 535 lbs. (35#) Variance: 100 lbs.
~38 Hfrs Wt: 540 lbs. Wt. Stop: 575 lbs. (35#) Variance: 200 lbs.
SELL HEIFERS, STEERS SELL \$20/cwt UP

Pickup Date: April 14-17
Slide/Shrink: 2% shrink and slide \$20/cwt topside only
Weigh: Hauled 15 miles, weighed on certified truck scales
Notice: 72 hours **Weaned:** 45+ days
Colors: 70% blk/bwf, 28% ch-x, 2% red
Muscling: 90% #1, 10% #1.5
Flesh: Medium/Light
Frame: Medium & Large
Nutrition: Bunk fed 8-10# of 13% commodity feed with free choice pasture, Vigortone mineral, and hay.
Vaccinations: Pyramid 5 Presponse (2x), Cavalry 9 (2x)
Dewormer: Synanthic, Eprinex **Implants:** None
Genetics: 75% or more Angus. Sired by Barnett Angus bulls or 1 Bieber Red Angus bull and out of Angus or Charolais-X cows. Char-x calves are 25% or less Charolais.
Programs: GAP-4; BeefCare; Verified Natural; NHTC; Affidavit
Preg-checked: Open, not palpated.
Comments: Broke to bunks and waters. A fancy group of steers and heifers that have been weaned for 45 days, are double vaccinated, and all natural. There are 27 heifers averaging 550 and 9 heifers at 400 lbs. This herd has been built around 10+ years of extensive AI breeding and the cattle have proved it year after year in the feedlots. They know the age of all of their cows and calves can be tracked to each cow with individual birthdates. Calves are all-natural and seller will sign affidavits as needed. GAP-4 Certificate can transfer at no cost to buyer (GAP#25155, Exp 7/24/26).
MACS Rep: Romaine Cartee, 912-531-0580

Programs:

Lot 6135 1 Load of STRS/HFRS

Price: \$ _____ Buyer # _____

Kairos Farms (Chap & David Cromley)
Brooklet, GA - 10 miles east of Statesboro, GA

Home-Raised, GAP-4, BeefCare, Natural, Backgrounded, Weaned



~61 Steers Wt: 595 lbs. Wt. Stop: 630 lbs. (35#) Variance: 175 lbs.
~23 Hfrs Wt: 550 lbs. Wt. Stop: 585 lbs. (35#) Variance: 175 lbs.
Heifers sell \$15/cwt back

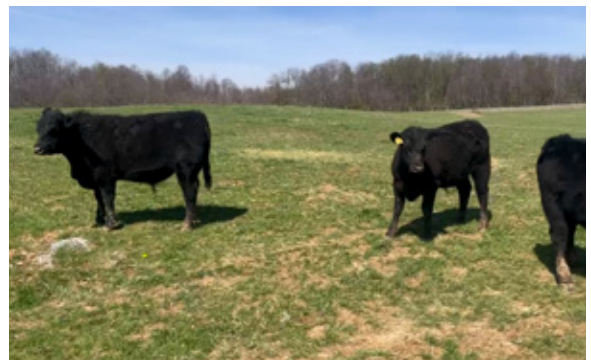
Pickup Date: April 14-17
Slide/Shrink: 2% shrink and slide \$17/cwt topside only
Weigh: Hauled 15 miles, weighed on certified truck scales
Notice: 72 hours **Weaned:** 45+ days
Colors: 100% blk/bwf **Flesh:** Medium/Light
Muscling: 100% #1 **Frame:** Medium & Large
Nutrition: Bunk fed 8-10# of 13% commodity feed with free choice pasture, Vigortone mineral, and hay.
Vaccinations: Pyramid 5 Presponse (1x), Bovi-Shield Gold 5 (1x), Cavalry 9 (2x)
Dewormer: Synanthic, Eprinex **Implants:** None
Genetics: 75% or more Angus. Sired by Barnett and Yon Family Farms Angus bulls and out of Angus and SimAngus cows.
Programs: GAP-4; BeefCare; Verified Natural; NHTC; Affidavit
Preg-checked: Open, not palpated.
Comments: Broke to bunks and waters. A fancy group of steers that have been weaned for 45 days, are double vaccinated, and all natural. This herd has been built around 10+ years of extensive AI breeding and the cattle have proved it year after year in the feedlots. They know the age of all of their cows and calves can be tracked to each cow with individual birthdates. Would work great to go to grass or feed. Calves are all-natural and seller will sign affidavits as needed. GAP-4 Certificate can transfer at no cost to buyer (GAP#25155, Exp 7/24/26).
MACS Rep: Romaine Cartee, 912-531-0580

Programs:

Lot 6136 0.95 Load of STRS/HFRS

Price: \$ _____ Buyer # _____

Sinking Springs Farm
Middlebrook, VA - 10 miles south of Staunton, VA



Home-Raised, GAP-4, Verified Natural, Backgrounded, Weaned

~31 Steers Wt: 650 lbs. Wt. Stop: 685 lbs. (35#) Variance: 150 lbs.
~38 Hfrs Wt: 690 lbs. Wt. Stop: 725 lbs. (35#) Variance: 150 lbs.
Heifers sell \$20/cwt back

Pickup Date: April 13-17
Slide/Shrink: 2% shrink and slide \$17/cwt topside only
Weigh: Hauled 5 miles, weighed on certified truck scales
Notice: 72 hours **Weaned:** 60+ days
Colors: 67 hd (97%) blk/bwf, 1 hd ch-x, 1 hd red **Flesh:** Medium
Muscling: 100% #1 **Frame:** Medium
Nutrition: Bunk fed silage-based TMR with free choice mineral, pasture, and hay.
Vaccinations: Pyramid 5 Presponse (3x), Vision 7 (2x)
Dewormer: LongRange (1x), Synanthic (2x), Cydectin (2x) **Implants:** None
Genetics: 75% or more Angus. Sired by high performing Angus and SimAngus bulls and out of Angus-based cows. About 25% of the calves are out of AI sires.
Programs: GAP-4; IMI Verified Natural; NHTC; Source & Age; Seller Affidavit
Preg-checked: Open, not palpated.
Comments: Broke to bunks and waters. A fancy set of Northern-type steers and heifers that are weaned, have been triple vaccinated, and qualify as all-natural. In the past these cattle have fed out as a high percentage high choice and prime and will make a big set of feeders. GAP 4 certificate can transfer at no cost to buyer. Cattle can be EID tagged for verified natural if needed. (GAP#25012, Exp 6/24/26). Not quite a full load at about 47,000 lbs.
MACS Rep: Marcus Harward, 704-322-0840

Programs:

MID-ATLANTIC CATTLE SALES

WWW.MACSVIDEO.COM



UPCOMING SALES

April 7	June 2
April 21	June 16
May 5	July 7
May 19	July 21

Our motto - Working hard for you today and every day!



To view the sale or bid online, visit www.DVAuction.com. Find the "Mid-Atlantic Cattle Sales (Richfield, NC)" sale and click on "Details." From this page you can view the catalog, videos, or log in to watch the sale. If you have an account, log in and view the sale. If you do not, you must create an account under the "Create New Account" tab in the upper left hand corner of the screen. You will need to confirm this account through your e-mail.

You DO NOT have to be approved for a buyer's number just to watch the sale but you will still need to create an account with DVAuction.



Mid-Atlantic Cattle Sales, LLC
28978 Misenheimer Rd. Richfield, NC 28137
info@macsvideo.com • www.MACSVideo.com

**Bonded through USDA Packers & Stockyards*

SALE TERMS AND CONDITIONS - PAGE 1 OF 2

MID-ATLANTIC CATTLE SALES, LLC

1. Each bidder must be pre-registered and have a Buyer Number to participate in the auction. To register for the auction call 704-322-9770, 704-322-0840, or register through DV Auction. By participating in the auction, the Buyer expressly agrees to adhere to these Terms and Conditions and to the provisions set forth in the Livestock Purchase Agreement sent after the auction. All cattle being offered for sale are under standard Contracts for Sale. All cattle are purchased under standard Contracts for Purchase by the Buyers.
2. The cattle offered for sale are indicated on the sale sheets or online sale description as described to the MACS representatives by the owner. They are described by lot numbers, seller, location of the cattle, numbers of head, estimated weight, management practices, delivery date, conditions of sale and delivery, and verified programs. Representatives for each load are listed under each respective lot. Every effort has been made to assure the correctness of this information but all announcements from the auctioneer or official auction staff prior to or during the sale shall take precedence over printed matter herein.
3. Auction bids will be taken as voice bids by telephone and in person or online bids through DV Auction. Bids are asked with each lot of cattle and will be sold to the highest bidder on the basis of estimated weight. Seller reserves the right to "no sale" the load lot(s) of their cattle at the time the highest bid is made as long as the "no sale" announcement is made prior to the next lot being sold. Any departure from this procedure will be announced and all announcements made from the auctioneer or official auction staff will take precedence over printed matter herein.
4. The Auctioneer reserves the right to reject any and all bids. Auctioneer will settle all disputed bids. If a dispute arises between two or more bidders, the Auctioneer may immediately put the lot up for sale again and resell to the highest bidder. The decision of the Auctioneer shall be final and absolute.
5. One full load of stocker or feeder cattle will be contracted for approximately 48,000 lbs. and the respective head count at the base weight at the full truckload weight. No freight adjustment will be given if the average weight at delivery is under the base weight and the head count delivered is within 95% of the contracted head count. Mid-Atlantic Cattle Sales and its representatives will act as agents only in the sale of lots of cattle. As the marketing agency we cannot guarantee a minimum or maximum amount of shrink on any load. Any weight guarantees in regard to shrink must be given by Seller. Mid-Atlantic Cattle Sales cannot guarantee off truck weights.
6. Cattle that are picked up after the stated delivery dates will be subject to a 2# per head per day increase on the base weight and any weight stops for each day late after the last stated delivery date. Any deviation from this 2# per head per day will be posted in the catalog and announced on sale day.
7. Most loads have weight stops at 25-50 lbs. over the base weight. The individual weight stops are posted on each lot. If a weight stop is listed, cattle will slide after shrink up to the posted weight stop and be sold on a total net weight at the posted weight stop. Any pounds after shrink over the weight stop will not be billed to the buyer or paid to the seller unless other arrangements have been made in writing.
8. All cattle will be sold on a sliding scale as listed on each load. The "price slide" will go into effect when the average net weight of the live cattle is over the base weight the cattle are sold at. This will go into effect starting at 1 pound over the base weight.
Slide Example: The cattle were sold at a base weight of 700 lbs with a \$5/cwt topside slide for \$150/cwt and at delivery weighed 725 lbs after shrink. The cattle would slide \$1.25 for a new price of \$148.75 at 725 lbs.
[Slide (\$5/cwt) X Pounds Over (25) = \$1.25/cwt] Also can be shown as $[\$5 / 100 \times 25 = \$1.25]$
9. On split loads the heifer price will be \$___/cwt (as stated in the lot information) back of the original price of the steers. The steers will be based at their purchase price and base weight and the heifers will be based at their purchase price and base weight. At delivery, slides and weight stops will be calculated separately on each group.

SALE TERMS AND CONDITIONS - PAGE 2 OF 2

MID-ATLANTIC CATTLE SALES, LLC

- 10.** The Buyer is responsible for all arrangements and regulatory requirements with respect to the transportation of the livestock and the Buyer is responsible for sending trucks to adequately load the number of head and/or the total weight contracted in order to legally transport them to their final destination. Cattle sold will be sorted and delivered to the stated weigh point by the Seller and weighed on a certified scale. Buyer will receive the cattle at point of weighing under conditions as stated with respect to each lot. Buyer will take ownership of the cattle at the point of loading.
- 11.** Health entry requirements for the state of entry are the responsibility of the Buyer. The Seller will furnish any health certificates required for the state of origin and Federal Law at the request of the buyer. If additional health certificates, documentation or tests are required for shipment to the Buyer's destination, it shall be at the Buyer's request and expense.
- 12.** Any heifer that is sold as guaranteed open and is determined to be bred by the buyer will receive a \$200 per bred heifer refund given appropriate documentation is provided within 90 days (updated) of the cattle being delivered. Documentation must include lot information, heifer identification, and veterinarian documentation. **UPDATE: Effective July 1, 2024 all heifer loads, unless explicitly stated in the catalog, are sold with a 90-day bred heifer refund guarantee. The catalog will explicitly state if heifers have been checked for pregnancy prior to delivery so that the buyer can plan accordingly.**
- 13.** Payment by Buyer is due and payable in accordance with USDA P&S prompt pay policy upon delivery of the cattle and at such times as the value of the cattle is determined based on weight (subject to condition), price (subject to condition), and any other conditions stated at time of sale. Payment must be sent to Mid-Atlantic Cattle Sales within 1 day after the cattle are received by the Buyer. We request that all payments be sent by Wire Transfer, ACH, or overnight delivery of a check via FedEx or UPS. Payment sent via the U.S. Postal Service (1st Class or Priority Mail) are expected to be received within 7 business days of delivery. Any fees incurred for sending payment will be at the Buyer's expense.
- 14.** Mid-Atlantic Cattle Sales does not warrant the harvest date on source and age verified cattle and cannot guarantee back verification on any program requiring signed affidavits or 3rd party verification. Mid-Atlantic Cattle Sales will make all efforts to ensure verifications are met, but it is the Buyer's responsibility to verify all claims of the Seller to fit specific programs prior to purchase.
- 15.** There are no implied warranties of merchantability or fitness for a particular purpose on any livestock sold. Seller does not warrant that the livestock are free from any latent defect, condition, sickness, or disease. Seller does not assume responsibility for any loss after the livestock are delivered, which results from any latent defect, condition, sickness, or disease.



Marcus Harward: 704-322-0840
Brooke Harward: 704-322-9770

info@macsvideo.com
www.MACsvideo.com

28978 Misenheimer Rd • Richfield, NC 28137