



MID-ATLANTIC CATTLE SALES

*A family owned and operated livestock video auction
with 30+ years of livestock marketing experience.*

DECEMBER 16, 2025

TUESDAY AT 1:00 PM EST

WWW.MACSVIDEO.COM



Mid-Atlantic Cattle Sales, LLC
28978 Misenheimer Rd. Richfield, NC 28137
704-322-0840 • 704-322-9770
info@macsvideo.com

DVAuction
Broadcasting Real-Time Auctions

Video Sale INFORMATION

The cattle offered for sale are indicated on the following sale sheets and the online sale description as described to the MACS representatives by the owner. They are described by lot numbers, seller, location of cattle, numbers of head, estimated weight, management practices, delivery date, conditions of sale and delivery, and verified programs. Representatives for each load are listed under each respective lot. Every effort has been made to assure the correctness of this information but all announcements from the auctioneer or official auction staff prior to or during the sale shall take precedence over printed matter herein.

SALE DATE & TIME:

Tuesday - December 16, 2025

1:00 pm est. | 12:00 pm cst.

CONTACT:

Marcus Harward704-322-0840

Brooke Harward704-322-9770

www.MACSvideo.com

View catalog, videos, and additional updates online.

www.vimeo.com/macsvideo

All videos of sale cattle are posted directly on our video page listed above and on DV Auction

***MACS Sale Terms and Conditions are listed in this catalog and online. All loads will sell under these terms and conditions.**

Bidding Options

*We want to offer you the best opportunities we can to participate in our sales each month.
Below are three options for bidding on the sale.*

1. CONFERENCE CALL

After 12:45 eastern on sale day, you can call the auction number to listen and bid on the sale. To bid during the sale, you will use your buyer number to bid on the lot. Contact Marcus or Brooke prior to the sale to receive a buyer's number. *Please keep background noise to a minimum as we will have multiple people on the line. To mute your phone, press *1. To un-mute, press *1 again.*

CALL-IN NUMBER: 1-866-906-9888

PASSCODE: 9461720 #



2. DV AUCTION - INTERNET VIEWING AND BIDDING

To view the sale or bid online, visit www.DVAuction.com. Find the "Mid-Atlantic Cattle Sales (Richfield, NC)" sale and click on "Details." From this page you can view the catalog, videos, or log in to watch the sale. If you have an account, log in and view the sale. If you do not, you must create an account under the "Create New Account" tab in the upper left hand corner of the screen. You will need to confirm this account through your e-mail. *It is best to do this at least a day before the sale.*

You DO NOT have to be approved just to watch the sale but you will still need to create an account with DVAuction. To register for a buyer's number, call Brooke at 704-322-9770 prior to the sale to be approved to bid online.

3. ABSENTEE BIDDING

For people who can not view or bid on the sale at sale time, we have can handle closed bids in house and assist you with absentee bidding. Contact Marcus at 704-322-0840 for more information.

"But the angel said to them, "Do not be afraid. I bring you good news that will cause great joy for all the people. Today in the town of David a Savior has been born to you; he is the Messiah, the Lord."

LUKE 2: 10-11



LOT SUMMARY

TUESDAY, DECEMBER 16, 2025

Video Sale Information Pg 2

Table of Contents / Lot Summary Pg 3

LOT NUMBER	LOAD NUMBER	TYPE	BASE WT.	PRODUCER	STATE	DELIVERY	PAGE NUMBER
Lot 5469	1 Load	Steers	710 lbs.	5H Livestock *	NC	December 18-23	Pg 4
Lot 5470	1 Load	Steers	650 lbs.	Howey Ranch *GAP VNB NHTC	SC	December 18-24	Pg 5
Lot 5471	1 Load	Steers	725 lbs.	Howey Ranch *GAP VNB NHTC	SC	December 18-24	Pg 5
Lot 5472	1 Load	Steers	800 lbs.	Second Chance Farms *GAP VNB NHTC	NC	December 18-23	Pg 6
Lot 5473	1 Load	Steers	800 lbs.	HRW Farms *GAP	NC	December 18-23	Pg 6
Lot 5474	1 Load	Steers	815 lbs.	R & R Cattle *	GA	December 18-23	Pg 7
Lot 5475	1 Load	Steers	970 lbs.	Rocking H Cattle Co *GAP VNB NHTC CARE	NC	December 18-23	Pg 7
Lot 5476	1 Load	Heifers	600 lbs.	Howey Ranch *GAP VNB NHTC	SC	December 18-24	Pg 8
Lot 5477	1 Load	Heifers	790 lbs.	R & R Cattle *	GA	December 18-23	Pg 8
Lot 5478	1 Load	Heifers	830 lbs.	Rocking H Cattle Co *GAP VNB NHTC	NC	December 18-23	Pg 9

EBS Farms Select Sale - January 3, 2026 Pgs 10-11

Upcoming Video Sale Dates Pg 12

DV Auction Information Pg 13

MACS Sale Terms & Conditions Pgs 14-15

* = Affidavit Natural GAP = GAP Certified VNB = Verified Natural
 NHTC = Non-Hormone Treated CARE = BeefCARE Certified ANGUS = AngusVerified Sires





Lot 5469 1 Load of STEERS

Price: \$ _____ Buyer # _____

5H Livestock (Brian Hamilton)

Jackson Springs, NC - 40 miles south of Asheboro, NC

Affidavit Natural, Backgrounded, Weaned

Base Wt: 710 lbs. Wt Stop: 730 lbs. (20#) Variance: 150 lbs.



Pickup Date: ASAP - December 18-23 **Estimated Head Count** 68

Slide/Shrink: 2% shrink and slide \$15/cwt topside only

Weigh: Certified ground scales at farm

Notice to load: 48 hours **Weaned:** 90+ days

Colors: 92% blk/bwf, 4 hd char-x, 1 hd red, 1 hd rwf

Muscling: 90% #1, 10% #1.5

Nutrition: Bunk fed 3# of 14% feed with free choice pasture, mineral, hay, and baleage.

Vaccinations: Inforce 3 (1x), Triangle 10 (2x), Vision 7 (2x), MultiMin 90 (2x)

Dewormer: Dectomax, Ivermectin

Implants: None

Genetics: Commercial Angus-based.

Programs: Seller Affidavit

Comments: Broke to bunks and waters. A good set of steers that have not been pushed hard on feed and carry a light medium flesh. 1 or 2 may have a white spot in their eye. Calves qualify as all-natural and seller will sign natural affidavits as needed. Calves will be weighed with a 2% shrink, \$15/cwt top slide, and a 20 lbs. weight stop.

MACS Rep: Marcus Harward, 704-322-0840

Programs:

Natural
AFFIDAVIT

zoetis



Flesh: Medium

Frame: Medium

Lot 5470 1 Load of STEERS

Price: \$ _____ Buyer # _____

Howey Ranch (Frank Howey)

Mount Croghan, SC - 40 miles southeast of Charlotte, NC

Home-Raised, GAP-4, Verified Natural, NHTC, Backgrounded, Weaned

Base Wt: 650 lbs. Wt Stop: 685 lbs. (35#) Variance: 175 lbs.

Pickup Date: December 18-24 **Estimated Head Count** 75

Slide/Shrink: No shrink and slide \$15/cwt topside only

Weigh: Hauled 30 miles to Norwood, weighed on certified ground scales

Notice to load: 72 hours **Weaned:** 60+ days

Colors: 70% blk/bwf, 30% red/rwf -- 15-20% Brah-X (no excessive ear)

Flesh: Medium

Muscling: 90% #1, 10% #1.5

Frame: 90% Medium, 10% Large

Nutrition: 10-12# ph/pd of 12% pellet feed with free choice pasture, hay, and VitaFerm GainSmart minerals and stress tubs.

Vaccinations: Vista Once (1x), Vista 5 (1x), Vision 7 20/20 spur (2x), VitaCharge Drench

Dewormer: Cydectin, Safeguard

Implants: None

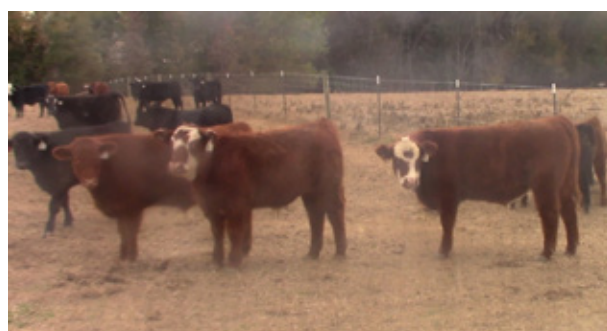
Genetics: 50% or more Angus. Primarily sired by Red Angus and Angus bulls with a few SimAngus bulls. Bulls are high-growth bulls primarily from Bieber, Pieper, EBS, and Black Grove. Out of Angus-based and crossbred cows. ~15-20% will show 1/16 to 1/4 ear.

Programs: GAP-4; IMI Verified Natural; NHTC; Source & Age; Seller Affidavit

Comments: Broke to bunks and waters. A very good set of high-growth steers that will finish as a big set of feeders. Calves are out of excellent Red Angus and Angus genetics in both the bulls and cows. Calves have been on the VitaFerm program with minerals, drench, and stress tubs. They are all natural and can be EID tagged for verified natural and NHTC with IMI Global. The GAP-4 certificate can transfer at no cost to buyer. (GAP#24858, Exp 3/21/26)

MACS Rep: Marcus Harward, 704-322-0840

Programs:



Lot 5471 1 Load of STEERS

Price: \$ _____ Buyer # _____

Howey Ranch (Frank Howey)

Mount Croghan, SC - 40 miles southeast of Charlotte, NC

Home-Raised, GAP-4, Verified Natural, NHTC, Backgrounded, Weaned

Base Wt: 725 lbs. Wt Stop: 760 lbs. (35#) Variance: 175 lbs.

Pickup Date: December 18-24 **Estimated Head Count** 67

Slide/Shrink: No shrink and slide \$15/cwt topside only

Weigh: Hauled 30 miles to Norwood, weighed on certified ground scales

Notice to load: 72 hours **Weaned:** 60+ days

Colors: 70% blk/bwf, 30% red/rwf -- 15-20% Brah-X (no excessive ear)

Flesh: Medium

Muscling: 95% #1, 5% #1.5

Frame: 90% Medium, 10% Large

Nutrition: 10-12# ph/pd of 12% pellet feed with free choice pasture, hay, and VitaFerm GainSmart minerals and stress tubs.

Vaccinations: Vista Once (1x), Vista 5 (1x), Vision 7 20/20 spur (2x), VitaCharge Drench

Dewormer: Cydectin, Safeguard

Implants: None

Genetics: 50% or more Angus. Primarily sired by Red Angus and Angus bulls with a few SimAngus bulls. Bulls are high-growth bulls primarily from Bieber, Pieper, EBS, and Black Grove. Out of Angus-based and crossbred cows. ~15-20% will show 1/16 to 1/4 ear.

Programs: GAP-4; IMI Verified Natural; NHTC; Source & Age; Seller Affidavit

Comments: Broke to bunks and waters. A very good set of high-growth steers that will finish as a big set of feeders. Calves are out of excellent Red Angus and Angus genetics in both the bulls and cows. Calves have been on the VitaFerm program with minerals, drench, and stress tubs. They are all natural and can be EID tagged for verified natural and NHTC with IMI Global. The GAP-4 certificate can transfer at no cost to buyer. (GAP#24858, Exp 3/21/26)

MACS Rep: Marcus Harward, 704-322-0840

Programs:



Lot 5472 1 Load of STEERS

Price: \$ _____ Buyer # _____

Second Chance Farms Inc

Pink Hill, NC - 30 miles southeast of Goldsboro, NC

Home-Raised, GAP-4, Verified Natural, Backgrounded, Weaned

Base Wt: 800 lbs. Wt Stop: 835 lbs. (35#) Variance: 175 lbs.

Pickup Date: December 18-23 **Estimated Head Count** 60

Slide/Shrink: 1% shrink and slide \$15/cwt topside only

Weigh: Hauled 15 miles, weighed on certified truck scales

Notice to load: 48 hours **Weaned:** 90+ days

Colors: 58 hd blk/bwf, 2 hd ch-x

Muscling: 100% #1

Nutrition: Bunk fed TMR (baleage, soyhulls, wet corn gluten) with calcium and minerals and on grass lots.

Vaccinations: Vista Once (2x), Vision 7 (2x), Multimin (1x)

Dewormer: Synanthic (1x), Dectomax Inject (1x) **Implants:** None

Genetics: 50-60% Angus, 40-50% Sim. Sired by SimAngus bulls from Gibbs Farms & Fred Smith or an Angus sire from Echo Ridge Farm, out of Angus-based and SimAngus cows. Sires average in the top 25% or better for Terminal Index and \$Beef, Marbling, and Yearling Weight. Genetics include Triple Crown, Mountaineer, Stonewall, Statement, Nighthawk, Xceed, Kenworth, and more. Tested and rank as Neogen Igenity Elite.

Programs: GAP-4; BeefTraxx Verified Natural; NHTC; Source & Age; Seller Affidavit

Comments: Broke to bunks and waters. An excellent, fancy set of calves with top genetics. Calves are EID tagged and natural certifications are complete and will transfer at no cost. GAP-4 certified (GAP#24820; Exp 5/2/26). Recent calf crops have averaged 95% Prime & Choice. An excellent set of feeding genetics. Tested and rank as Neogen Igenity Elite.

MACS Rep: Jeff Martin, 910-379-9173

Programs:



Flesh: Medium

Frame: Medium



Lot 5473 1 Load of STEERS

Price: \$ _____ Buyer # _____

HRW Farms #1

Thurmond, NC - 10 miles north of Elkin, NC

Home-Raised, GAP-4, Natural, NHTC, Backgrounded, Weaned

Base Wt: 800 lbs. Wt Stop: 835 lbs. (35#) Variance: 150 lbs.

Pickup Date: December 18-23 **Estimated Head Count** 61

Slide/Shrink: 2% shrink and slide \$15/cwt topside only

Weigh: Certified ground scales at farm

Notice to load: 48 hours **Weaned:** 75+ days

Colors: 88 hd to sort - 15 hd blk/bwf, 71 hd ch-x, 2 hd red

Muscling: 95% #1, 5% #1.5

Nutrition: Bunk fed 15# ph/pd of 14% feed and silage with free choice mineral and hay.

Vaccinations: Bovi-Shield Gold One Shot (1x), Bovi-Shield Gold 5 (1x), Alpha 7 (2x), Vision 7 20/20 (1x)

Dewormer: Dectomax **Implants:** None

Genetics: Sired by Angus, Charolais, and SimAngus bulls out of crossbred cows. All chars are crossbred with a black nose or gray/yellow. Might be a couple light-nosed but are all crossbred calves.

Programs: GAP-4; Seller Affidavit

Comments: Broke to bunks and waters. Weaned & backgrounded at the Thurmond Farm location. Home-raised, high-growth steers with Charolais and Angus genetics that will grow and make a big set of feeders. Reputational calves from a very good program. These are fall & winter born calves weaned 75+ days. GAP-4 certificate can transfer at no cost to buyer. (GAP#24060, Exp 12/23/25).

MACS Rep: Jimmy Dagenhart, 704-425-3587

Programs:



Flesh: Medium

Frame: Medium

Lot 5474 1 Load of STEERS

Price: \$ _____ Buyer # _____

R & R Cattle (Ronnie Johnson)

Millen, GA - 30 miles northwest of Statesboro, GA

Home-Raised, Affidavit Natural, Backgrounded, Weaned



Base Wt: 815 lbs. Wt Stop: 850 lbs. (35#) Variance: 150 lbs.

Pickup Date: December 19-23 **Estimated Head Count** 60

Slide/Shrink: 2% shrink and slide \$10/cwt topside only

Weigh: Hauled 10 miles, weighed on certified truck scales

Notice to load: 72 hours **Weaned:** 90+ days

Colors: 85% blk/bwf, 12% char-x, 3% red/rwf

Muscling: 100% #1

Nutrition: Bunk fed TMR (corn silage, corn gluten, WB Flemming mineral) with free choice hay.

Vaccinations: Pyramid 5 Presponse (2x), Cavalry 9 (2x), Autogenous pinkeye (1x) (July & Sep)

Dewormer: LongRange, Synanthic

Implants: None

Genetics: 60% or more Angus. Sired by Yon Family Farms Angus bulls or Bieber Red Angus bulls and out of Angus or Charolais-X cows.

Programs: Seller Affidavit Natural

Comments: Broke to bunks and waters. A very good set of yearling steers, weaned in early September and double vaccinated (vaccinations given by contractor). Calves meet natural certifications and will sign buyer's natural affidavits. A good set of steers with just a medium flesh and selling with a 35# weight stop.

MACS Rep: Romaine Cartee, 912-531-0580

Programs:     

Lot 5475 1 Load of STEERS

Price: \$ _____ Buyer # _____

Rocking H Cattle Company

Norwood, NC - 40 miles east of Charlotte, NC

Home-Raised, GAP-4, CARE, Verified Natural, NHTC, Backgrounded, Weaned



Base Wt: 970 lbs. Wt Stop: 995 lbs. (25#) Variance: 200 lbs.

Pickup Date: December 17-23 **Estimated Head Count** 50

Slide/Shrink: 2% shrink and slide \$12/cwt topside only

Weigh: Certified ground scales at farm

Notice to load: 24-48 hours **Weaned:** 120+ days

Colors: 36 hd blk/bwf, 14 hd char-x (1 w/ small horns)

Muscling: 95% #1, 5% #1.5

Nutrition: Bunk fed TMR of corn silage, ground hay, soyhulls, wet corn gluten, corn, and mineral mixed in ration.

Vaccinations: October: Vista Once, Vision 7. November: Vista 5, Vision 7 somnus. Also Triangle 10 (2x)

Dewormer: Safeguard, LongRange, Pour On

Implants: None

Genetics: 50-75% Angus. Sired by Angus & SimAngus bulls and out of Angus-based, SimAngus, and Char-X cows. Majority of the sires have EPDs in the top 30% or better for growth, marbling, and ribeye. 1 steer with small horns.

Programs: GAP-4; BeefCare; IMI Verified Natural; NHTC; Source & Age; Affidavit

Comments: Broke to bunks and waters. BQA Certified. A good set of Fall 2024 born steers with several years of high-performing genetics behind them. Past years these calves have finished out as high percentage Choice and Prime. Have had three rounds of vaccinations, were brought in from several pastures and weaned together for 90+ days. Natural certifications are able to transfer at no cost to the buyer. (GAP#25458, Exp 7/8/26). ****CARE certified and Rocking H has not previously or are currently involved in selling any carbon credits.**

MACS Rep: Catherine Edwards, 704-550-7920

Programs:         

Lot 5476 1 Load of HEIFERS

Price: \$ _____ Buyer # _____

Howey Ranch (Frank Howey)

Mount Croghan, SC - 40 miles southeast of Charlotte, NC

Home-Raised, GAP-4, Verified Natural, NHTC, Backgrounded, Weaned

Base Wt: 600 lbs. Wt Stop: 635 lbs. (35#) Variance: 200 lbs.



Pickup Date: December 18-24 **Estimated Head Count** 81

Slide/Shrink: No shrink and slide \$15/cwt topside only

Weigh: Hauled 30 miles to Norwood, weighed on certified ground scales

Notice to load: 72 hours **Weaned:** 60+ days

Colors: 70% blk/bwf, 30% red/rwf -- 15-20% Brah-X (no excessive ear)

Flesh: Medium

Muscling: 90% #1, 10% #1.5

Frame: 90% Medium, 10% Large

Nutrition: 10-12# ph/pd of 12% pellet feed with free choice pasture, hay, and VitaFerm GainSmart minerals and stress tubs.

Vaccinations: Vista Once (1x), Vista 5 (1x), Vision 7 20/20 spur (2x), VitaCharge Drench

Dewormer: Cydectin, Safeguard

Implants: None

Genetics: 50% or more Angus. Primarily sired by Red Angus and Angus bulls with a few SimAngus bulls. Bulls are high-growth bulls primarily from Bieber, Pieper, EBS, and Black Grove. Out of Angus-based and crossbred cows. ~15-20% will show 1/16 to 1/4 ear.

Programs: GAP-4; IMI Verified Natural; NHTC; Source & Age; Seller Affidavit

Heifers: Open. Heifers can be palpated at load out at buyers request with a 48 hour notice. Cattle will be hauled 30 miles, weighed on the ground, and then palpated by the vet.

Comments: Broke to bunks and waters. A very good set of high-growth heifers that will finish as a big set of feeders. Calves are out of excellent Red Angus and Angus genetics in both the bulls and cows. Calves have been on the VitaFerm program with minerals, drench, and stress tubs. They are all natural and can be EID tagged for verified natural and NHTC with IMI Global. The GAP-4 certificate can transfer at no cost to buyer. (GAP#24858, Exp 3/21/26)

MACS Rep: Marcus Harward, 704-322-0840

Programs:



Lot 5477 1 Load of HEIFERS

Price: \$ _____ Buyer # _____

R & R Cattle (Ronnie Johnson)

Millen, GA - 30 miles northwest of Statesboro, GA

Home-Raised, Affidavit Natural, Backgrounded, Weaned

Base Wt: 790 lbs. Wt Stop: 825 lbs. (35#) Variance: 150 lbs.



Pickup Date: December 19-23 **Estimated Head Count** 61

Slide/Shrink: 2% shrink and slide \$10/cwt topside only

Weigh: Hauled 10 miles, weighed on certified truck scales

Notice to load: 72 hours **Weaned:** 90+ days

Colors: 85% blk/bwf, 12% char-x, 3% red/rwf

Flesh: Medium

Muscling: 100% #1

Frame: 80% Med, 20% Large

Nutrition: Bunk fed TMR (corn silage, corn gluten, WB Flemming mineral) with free choice hay.

Vaccinations: Pyramid 5 Presponse (2x), Cavalry 9 (2x), Autogenous pinkeye (1x) (July & Sep)

Dewormer: LongRange, Synanthic

Implants: None

Genetics: 60% or more Angus. Sired by Yon Family Farms Angus bulls or Bieber Red Angus bulls and out of Angus or Charolais-X cows.

Programs: Seller Affidavit Natural

Heifers: Open, not palpated.

Comments: Broke to bunks and waters. A very good set of yearling heifers, weaned in early September and double vaccinated (vaccinations given by contractor). Calves meet natural certifications and will sign buyer's natural affidavits. A good set of heifers with just a medium flesh and selling with a 35# weight stop.

MACS Rep: Romaine Cartee, 912-531-0580

Programs:



Lot 5478 1 Load of HEIFERS

Price: \$ _____ Buyer # _____

Rocking H Cattle Company

Norwood, NC - 40 miles east of Charlotte, NC

Home-Raised, GAP-4, Verified Natural, NHTC, Backgrounded, Weaned

Base Wt: 830 lbs. Wt Stop: 855 lbs. (25#) Variance: 150 lbs.



Pickup Date: December 18-23 **Estimated Head Count** 58

Slide/Shrink: 2% shrink and slide \$15/cwt topside only

Weigh: Certified ground scales at farm

Notice to load: 24-48 hours **Weaned:** 120+ days

Colors: 34 hd blk/bwf, 17 hd red/rwf, 4 hd ch-x, 3 hd yellow (6-8 hd with flick) **Flesh:** Medium

Muscling: 95% #1, 5% #1.5 **Frame:** Medium

Nutrition: Bunk fed TMR of corn silage, ground hay, soyhulls, wet corn gluten, corn, and mineral mixed in ration.

Vaccinations: Vista Once (1x), Vista 5 (1x), Vision 7 20/20 spur (2x)

Dewormer: Cydectin, Safeguard **Implants:** None

Genetics: 50% or more Angus. Primarily sired by Red Angus and Angus bulls with a few SimAngus bulls. Bulls are high-growth bulls primarily from Bieber, Pieper, EBS, and Black Grove. Out of Angus-based and crossbred cows. 6-8 hd with a flick of ear.

Programs: GAP-4; IMI Verified Natural; NHTC; Source & Age; Seller Affidavit

Heifers: Vet palpated, guaranteed open.

Comments: Broke to bunks and waters. BQA Certified. A good set of Fall/Winter 2024 born heifers with several years of high-performing genetics behind them. Past years these calves have finished out as high percentage Choice and Prime. Have been double vaccinated and were brought in from several pastures and weaned together for 60+ days. Natural certifications are able to transfer at no cost to the buyer. (GAP#25458, Exp 7/8/26).

MACS Rep: Catherine Edwards, 704-550-7920

Programs:



HARWARD BROTHERS LIVESTOCK MARKET

2207 Turnersburg Hwy. Statesville, NC

Phone: 704-546-2692

WWW.TURNERSBURGSTOCKYARDNC.COM

STANLY COUNTY LIVESTOCK MARKET

13215 Indian Mound Rd. Norwood, NC

Phone: 704-474-7681

WWW.NORWOODSTOCKYARDNC.COM

Weekly Sales - Every Monday at 11:30 am

Take in livestock on Sunday (12 pm - 7 pm) and Monday

3:00 pm - Holstein & Dairy Influenced Feeder Cattle
6:00 pm - Small Animal Sale (Baby Calves, Goats, Sheep)

Marcus Harward • 704-322-0840

Brooke Harward • 704-322-9770

Watch the sales live every week!

Weekly Sales - Every Wednesday at 10:30 am

Take in livestock on Tuesday (10 am - 8 pm) and Wednesday

Graded Feeder Calf Sale Schedule posted online at
www.norwoodfeederalf.com

Marcus Harward • 704-322-0840

Catherine Edwards • 704-550-7920

Will Edwards • 919-449-8064

CATCHING, HAULING, AND CATTLE WORK SERVICES AVAILABLE



MAC-VAC FEEDER CALVES

A marketing program available at both sale locations for vaccinated steers and heifers. Calves that meet vaccination requirements and have the sale tag in their ear will sell in the MAC-VAC portion of the sale at the beginning of the feeder calf sale each week. For more information, please visit www.norwoodfeederalf.com or contact any of the numbers listed here.

Catching, hauling, and cattle work services:

For hauling services, contact Marcus at 704-322-0840.

If you need help working your cattle, contact Marcus Harward at 704-322-0840 or Chuck Doolittle at 704-221-1447 for more information.

17TH ANNUAL

DVAuction

THE Select Sale

JANUARY 3, 2026

NORWOOD, NC • 12:00 PM EST

SELLING 80 BULLS & 100 FEMALES

Registered Angus, SimAngus, Simmental, and Charolais Bulls
Registered and Commercial Open Heifers, Bred Heifers, Bred Cows, & Pairs



**EBS 568 - Basin Jameson x
SydGen Bonus**



**EBS 558 - Basin Jameson x
SydGen Enhance**



**EBS 555 - Basin Jameson x
SydGen CC&7**



**EBS 510 - EZAR Step Up x
CoX Excaliber 8590**



PERFORMANCE TESTED BULLS

Complete AHIR Performance Records • DNA Genomic Tested with Genomic-Enhanced EPDs • Ultrasound Data Provided
Breeding Soundness Guaranteed • BVD-PI Tested Negative • Complete Herd Health Vaccination Program



BRUCE & CARLA SHANKLE
704-694-8686 • 704-826-8848
EBSFARMS@WINDSTREAM.NET

HARWARD
Sisters CATTLE CO

**BROOKE, MARCIE, & MATTIE
HARWARD** • 704-322-9770
704-322-5201 • 704-322-0831
WWW.HARWARDSISTERS.COM

**SALE HELD AT STANLY COUNTY LIVESTOCK MARKET
CATALOG AVAILABLE EARLY DECEMBER | ONLINE BIDDING ON DVAUCTION**



LOT 1 EBS JAMESON 569
WW +98 • YW +165 • \$C +347



LOT 2 EBS JAMESON 558
WW +99 • MARB +1.22 • \$C +332



LOT 3 EBS JAMESON 568
WW +107 • \$W +112 • \$B +192



LOT 4 EBS LAST CALL 555
WW +86 • MARB +1.64 • \$C +349



LOT 7 EBS STEP UP 549
RE +1.01 • \$B +193 • \$C +300



LOT 10 EBS FIREBALL 515
CED +8 • WW +93 • YW +164
MARB +1.76 • \$B +251 • \$C +380



LOT 11 EBS B BANDOLIER 511
CED +12 • \$B +201 • \$C +334



LOT 14 EBS JAMESON 575
CED +10 • WW +98 • YW +162



LOT 24 AF DOMINANCE 508
WW +92 • YW +164 • \$C +354



LOT 38 HSCC MAN IN BLACK M70
WW +91 • YW +154 • \$C +297



LOT 39 HSCC MAN IN BLACK M83
WW +99 • YW +168 • \$C +301



LOT 42 HSCC ICONIC M66
CED +8 • BW +1.1 • MARB +1.08



LOT 69 HSCC BOUNTY M69
SIMANGUS • WW +100 • YW +160



LOT 70 HSCC BOUNTY M69
SIMANGUS • WW +82 • YW +142



LOT 73 HSCC SILVERSMITH M79
CHAROLAIS • MARB +.28 • RE +.89

MID-ATLANTIC CATTLE SALES

WWW.MACSVIDEO.COM



UPCOMING SALES

January 6
January 20
February 3
February 17

March 3
March 17
April 7
April 21

Our motto - Working hard for you today and every day!



To view the sale or bid online, visit www.DVAuction.com. Find the "Mid-Atlantic Cattle Sales (Richfield, NC)" sale and click on "Details." From this page you can view the catalog, videos, or log in to watch the sale. If you have an account, log in and view the sale. If you do not, you must create an account under the "Create New Account" tab in the upper left hand corner of the screen. You will need to confirm this account through your e-mail.

You DO NOT have to be approved for a buyer's number just to watch the sale but you will still need to create an account with DVAuction.



Mid-Atlantic Cattle Sales, LLC
28978 Misenheimer Rd. Richfield, NC 28137
info@macsvideo.com • www.MACSvideo.com

**Bonded through USDA Packers & Stockyards*

SALE TERMS AND CONDITIONS - PAGE 1 OF 2

MID-ATLANTIC CATTLE SALES, LLC

1. Each bidder must be pre-registered and have a Buyer Number to participate in the auction. To register for the auction call 704-322-9770, 704-322-0840, or register through DV Auction. By participating in the auction, the Buyer expressly agrees to adhere to these Terms and Conditions and to the provisions set forth in the Livestock Purchase Agreement sent after the auction. All cattle being offered for sale are under standard Contracts for Sale. All cattle are purchased under standard Contracts for Purchase by the Buyers.
2. The cattle offered for sale are indicated on the sale sheets or online sale description as described to the MACS representatives by the owner. They are described by lot numbers, seller, location of the cattle, numbers of head, estimated weight, management practices, delivery date, conditions of sale and delivery, and verified programs. Representatives for each load are listed under each respective lot. Every effort has been made to assure the correctness of this information but all announcements from the auctioneer or official auction staff prior to or during the sale shall take precedence over printed matter herein.
3. Auction bids will be taken as voice bids by telephone and in person or online bids through DV Auction. Bids are asked with each lot of cattle and will be sold to the highest bidder on the basis of estimated weight. Seller reserves the right to "no sale" the load lot(s) of their cattle at the time the highest bid is made as long as the "no sale" announcement is made prior to the next lot being sold. Any departure from this procedure will be announced and all announcements made from the auctioneer or official auction staff will take precedence over printed matter herein.
4. The Auctioneer reserves the right to reject any and all bids. Auctioneer will settle all disputed bids. If a dispute arises between two or more bidders, the Auctioneer may immediately put the lot up for sale again and resell to the highest bidder. The decision of the Auctioneer shall be final and absolute.
5. One full load of stocker or feeder cattle will be contracted for approximately 48,000 lbs. and the respective head count at the base weight at the full truckload weight. No freight adjustment will be given if the average weight at delivery is under the base weight and the head count delivered is within 95% of the contracted head count. Mid-Atlantic Cattle Sales and its representatives will act as agents only in the sale of lots of cattle. As the marketing agency we cannot guarantee a minimum or maximum amount of shrink on any load. Any weight guarantees in regard to shrink must be given by Seller. Mid-Atlantic Cattle Sales cannot guarantee off truck weights.
6. Cattle that are picked up after the stated delivery dates will be subject to a 2# per head per day increase on the base weight and any weight stops for each day late after the last stated delivery date. Any deviation from this 2# per head per day will be posted in the catalog and announced on sale day.
7. Most loads have weight stops at 25-50 lbs. over the base weight. The individual weight stops are posted on each lot. If a weight stop is listed, cattle will slide after shrink up to the posted weight stop and be sold on a total net weight at the posted weight stop. Any pounds after shrink over the weight stop will not be billed to the buyer or paid to the seller unless other arrangements have been made in writing.
8. All cattle will be sold on a sliding scale as listed on each load. The "price slide" will go into effect when the average net weight of the live cattle is over the base weight the cattle are sold at. This will go into effect starting at 1 pound over the base weight.
Slide Example: The cattle were sold at a base weight of 700 lbs with a \$5/cwt topside slide for \$150/cwt and at delivery weighed 725 lbs after shrink. The cattle would slide \$1.25 for a new price of \$148.75 at 725 lbs.
[Slide (\$5/cwt) X Pounds Over (25) = \$1.25/cwt] Also can be shown as $[\$5 / 100 \times 25 = \$1.25]$
9. On split loads the heifer price will be \$____/cwt (as stated in the lot information) back of the original price of the steers. The steers will be based at their purchase price and base weight and the heifers will be based at their purchase price and base weight. At delivery, slides and weight stops will be calculated separately on each group.

*Updated March 28, 2023
Updated July 1, 2024*

SALE TERMS AND CONDITIONS - PAGE 2 OF 2

MID-ATLANTIC CATTLE SALES, LLC

- 10.** The Buyer is responsible for all arrangements and regulatory requirements with respect to the transportation of the livestock and the Buyer is responsible for sending trucks to adequately load the number of head and/or the total weight contracted in order to legally transport them to their final destination. Cattle sold will be sorted and delivered to the stated weigh point by the Seller and weighed on a certified scale. Buyer will receive the cattle at point of weighing under conditions as stated with respect to each lot. Buyer will take ownership of the cattle at the point of loading.
- 11.** Health entry requirements for the state of entry are the responsibility of the Buyer. The Seller will furnish any health certificates required for the state of origin and Federal Law at the request of the buyer. If additional health certificates, documentation or tests are required for shipment to the Buyer's destination, it shall be at the Buyer's request and expense.
- 12.** Any heifer that is sold as guaranteed open and is determined to be bred by the buyer will receive a \$200 per bred heifer refund given appropriate documentation is provided within 90 days (updated) of the cattle being delivered. Documentation must include lot information, heifer identification, and veterinarian documentation. **UPDATE: Effective July 1, 2024 all heifer loads, unless explicitly stated in the catalog, are sold with a 90-day bred heifer refund guarantee. The catalog will explicitly state if heifers have been checked for pregnancy prior to delivery so that the buyer can plan accordingly.**
- 13.** Payment by Buyer is due and payable in accordance with USDA P&S prompt pay policy upon delivery of the cattle and at such times as the value of the cattle is determined based on weight (subject to condition), price (subject to condition), and any other conditions stated at time of sale. Payment must be sent to Mid-Atlantic Cattle Sales within 1 day after the cattle are received by the Buyer. We request that all payments be sent by Wire Transfer, ACH, or overnight delivery of a check via FedEx or UPS. Payment sent via the U.S. Postal Service (1st Class or Priority Mail) are expected to be received within 7 business days of delivery. Any fees incurred for sending payment will be at the Buyer's expense.
- 14.** Mid-Atlantic Cattle Sales does not warrant the harvest date on source and age verified cattle and cannot guarantee back verification on any program requiring signed affidavits or 3rd party verification. Mid-Atlantic Cattle Sales will make all efforts to ensure verifications are met, but it is the Buyer's responsibility to verify all claims of the Seller to fit specific programs prior to purchase.
- 15.** There are no implied warranties of merchantability or fitness for a particular purpose on any livestock sold. Seller does not warrant that the livestock are free from any latent defect, condition, sickness, or disease. Seller does not assume responsibility for any loss after the livestock are delivered, which results from any latent defect, condition, sickness, or disease.



Marcus Harward: 704-322-0840

Brooke Harward: 704-322-9770

info@macsvideo.com

www.MACSvideo.com

28978 Misenheimer Rd • Richfield, NC 28137