

# MID-ATLANTIC CATTLE SALES

*A family owned and operated livestock video auction  
with 30+ years of livestock marketing experience.*

---

**JULY 20, 2021**  
**TUESDAY AT 1:00 PM EDT**

**WWW.MACSVIDEO.COM**



**Mid-Atlantic Cattle Sales, LLC**  
28978 Misenheimer Rd. Richfield, NC 28137  
704-322-0840 • 704-322-9770  
info@macsvideo.com



# Video Sale INFORMATION

The cattle offered for sale are indicated on the following sale sheets and the online sale description as described to the MACS representatives by the owner. They are described by lot numbers, seller, location of cattle, numbers of head, estimated weight, management practices, delivery date, conditions of sale and delivery, and verified programs. Representatives for each load are listed under each respective lot. Every effort has been made to assure the correctness of this information but all announcements from the auctioneer or official auction staff prior to or during the sale shall take precedence over printed matter herein.

## SALE DATE & TIME:

**Tuesday - July 20, 2021**

**1:00 pm edt. | 12:00 pm cdt.**

## CONTACT:

Marcus Harward .....704-322-0840

Brooke Harward .....704-322-9770

See our website for MACS representatives' contact information.

## WEBSITES:

**[www.MACSvideo.com](http://www.MACSvideo.com)**

*View catalog, videos, and additional updates online on our website.*

**[www.vimeo.com/macsvideo](http://www.vimeo.com/macsvideo)**

*All videos of sale cattle are posted directly on our video page listed above.*

## Bidding Options

*We want to offer you the best opportunities we can to participate in our sales each month. Below are three options for bidding on the sale.*

### 1. CONFERENCE CALL

After 12:45 eastern on sale day, you can call the auction number to listen and bid on the sale. To bid during the sale, you will use your buyer number to bid on the lot. Contact Marcus or Brooke prior to the sale to receive a buyer's number. *Please keep background noise to a minimum as we will have multiple people on the line. To mute your phone, press \*6. To un-mute, press \*6 again.*

**CALL-IN NUMBER: 1-866-906-9888**

**PASSCODE: 9461720 #**

### 2. DV AUCTION - INTERNET VIEWING AND BIDDING



To view the sale or bid online, visit [www.DVAuction.com](http://www.DVAuction.com). Find the "Mid-Atlantic Cattle Sales (Richfield, NC)" sale and click on "Details." From this page you can view the catalog, videos, or log in to watch the sale. If you have an account, log in and view the sale. If you do not, you must create an account under the "Create New Account" tab in the upper left hand corner of the screen. You will need to confirm this account through your e-mail. *It is best to do this at least a day before the sale.*

**You DO NOT have to be approved just to watch the sale but you will still need to create an account with DVAuction. To register for a buyer's number, call Brooke at 704-322-9770 prior to the sale to be approved to bid online.**

### 3. ABSENTEE BIDDING

For people who can not view or bid on the sale at sale time, we have can handle closed bids in house and assist you with absentee bidding. Contact Marcus at 704-322-0840 for more information.

*"Blessed is the nation whose God is the Lord"*

**PSALM 33:12**



# TABLE OF CONTENTS

## TUESDAY - JULY 20, 2021 - 1:00 PM

Video Sale Information	Page 2
Table of Contents	Page 3
Sale Terms and Conditions	Page 4
<b>Lot 20-004 - 2 Truckloads of Bred Cows from HVF Farms</b>	Page 6
Lot 1202 1 Load Steers 570 lbs Triple M Farms Inc	Page 7
Lot 1203 1 Load Steers 585 lbs Catawba Cattlemen's Alliance *VNB NHTC	Page 7
Lot 1204 1 Load Steers 650 lbs Rosenbaum Feeder Cattle	Page 8
Lot 1205 1 Load Steers 675 lbs Allen Farms *GAP	Page 8
Lot 1206 0.5 Load Steers 695 lbs D.A. Hill Farms *GAP	Page 9
Lot 1207 1 Load Steers 700 lbs Donald Chriscoe Farm *	Page 9
Lot 1208 1 Load Steers 715 lbs Catawba Cattlemen's Alliance *VNB NHTC	Page 10
Lot 1209 2 Loads Steers 725 lbs Randy Ratliff	Page 10
Lot 1210 1 Load Steers 730 lbs Randy Ratliff	Page 11
Lot 1211 1 Load Steers 775 lbs Frank Howey Farms *GAP VNB NHTC	Page 11
Lot 1212 1 Load Steers 795 lbs D.A. Hill Farms *GAP	Page 12
Lot 1213 1 Load Steers 800 lbs P & D Farm	Page 12
Lot 1214 0.7 Load Steers 815 lbs Fall Line Farm *GAP	Page 13
Lot 1215 1 Load Steers 825 lbs Wester Farms	Page 13
Lot 1216 1 Load Steers 835 lbs Catawba Cattlemen's Alliance *VNB NHTC	Page 14
Lot 1217 1 Load Steers 875 lbs Wester Farms	Page 14
Lot 1218 1 Load Heifers 540 lbs Triple M Farms Inc	Page 15
Lot 1219 1 Load Heifers 585 lbs Rosenbaum Feeder Cattle	Page 15
Lot 1220 1 Load Heifers 600 lbs Mike Hope Farms *GAP	Page 16
Lot 1221 1 Load Heifers 650 lbs Mike Hope Farms *GAP	Page 16
Lot 1222 0.8 Load Heifers 635 lbs D.A. Hill Farms *GAP	Page 17
Lot 1223 1 Load Heifers 665 lbs Catawba Cattlemen's Alliance *VNB NHTC	Page 17
Lot 1224 1 Load Heifers 700 lbs Donald Chriscoe Farm *	Page 18
Lot 1225 2 Loads Heifers 775 lbs P & D Farm	Page 18
Lot 1226 1 Load Steers 550 lbs Rocking H Cattle Co *GAP VNB CARE NHTC	Page 19
Heifers 550 lbs	
Lot 1227 1 Load Steers 725 lbs Wes Knight *GAP	Page 19
Heifers 650 lbs	

\* = All-Natural    **GAP** = GAP Certified    **VNB** = Verified Natural    **NE3** = Never Ever 3  
**NHTC** = Non-Hormone Treated    **CARE** = BeefCARE Certified

Most loads have weight stops at 25-50 lbs. over the base weight.

**UPDATE:** The individual weight stops are posted on each lot. Cattle that are picked up after the stated delivery dates will be subject to a **2# PER DAY** increase on the base weight and any weight stops for each day late after the last stated delivery date.

# Sale Terms and Conditions

1. Each bidder must be pre-registered and have a Buyer Number to participate in the auction. To register for the auction call 704-322-9770 or register through DV Auction. By participating in the auction the Buyer expressly agrees to adhere to these Terms and Conditions and to the provisions set forth in the Livestock Purchase Agreement sent after the auction. All cattle being offered for sale are under standard Contracts for Sale. All cattle are purchased under standard Contracts for Purchase by the Buyers.
2. The cattle offered for sale are indicated on the sale sheets or online sale description as described to the MACS representatives by the owner. They are described by lot numbers, seller, location of cattle, numbers of head, estimated weight, management practices, delivery date, conditions of sale and delivery, and verified programs. Representatives for each load are listed under each respective lot. Every effort has been made to assure the correctness of this information but all announcements from the auctioneer or official auction staff prior to or during the sale shall take precedence over printed matter herein.
3. Auction bids will be taken as voice bids by telephone and in person or online bids through DV Auction. Bids are asked with each lot of cattle and will be sold to the highest bidder on the basis of estimated weight. Seller reserves the right to "no sale" the load lot(s) of his cattle at the time the highest bid is made as long as the "no sale" announcement is made prior to the next lot being sold. Any departure from this procedure will be announced and all announcements made from the auctioneer or official auction staff will take precedence over printed matter herein.
4. The Auctioneer reserves the right to reject any and all bids. Auctioneer will settle all disputed bids. If a dispute arises between two or more bidders the Auctioneer may immediately put the lot up for sale again and resell to the highest bidder. The decision of the Auctioneer shall be final and absolute.
5. One full load of stocker or feeder cattle will be contracted for approximately 48,000 lbs. and the respective head count at the base weight at the full truckload weight. No freight adjustment will be given if the average weight at delivery is under the base weight and the head count delivered is within 95% of the contracted head count. Mid-Atlantic Cattle Sales and its representatives will act as agents only in the sale of lots of cattle. As the marketing agency we cannot guarantee a minimum or maximum amount of shrink on any load. Any weight guarantees in regards to shrink must be given by Seller. Mid-Atlantic Cattle Sales cannot guarantee off truck weights.
6. Cattle that are picked up after the stated delivery dates will be subject to a 2# per head per day increase on the base weight and any weight stops for each day late after the last stated delivery date.
7. Most loads have weight stops at 25-50 lbs. over the base weight. The individual weight stops are posted on each lot. All cattle will be sold on a sliding scale as listed on each load.
8. On split loads the heifer price will be \$\_\_\_/cwt (as stated in the lot information) back of the original price of the steers.
9. The Buyer is responsible for all arrangements and regulatory requirements with respect to the transportation of the livestock and the Buyer is responsible for sending trucks to adequately load the number of head and/or the total weight contracted in order to legally transport them to their final destination. Cattle sold will be sorted and delivered to the stated weigh point by the Seller and weighed on a certified scale. Buyer will receive the cattle at point of weighing under conditions as stated with respect to each lot. Buyer will take ownership of the cattle at the point of loading.
10. Health entry requirements for the state of entry are the responsibility of the Buyer. The Seller will furnish any health certificates required for the state of origin and Federal Law. If additional health certificates, documentation or tests are required for shipment to the Buyer's destination, it shall be at the Buyer's request and expense.
11. Any heifer that is sold as guaranteed open and is determined to be bred by the buyer will receive a \$200 per bred heifer refund given appropriate documentation is provided within 60 days of the cattle being delivered. Documentation must include lot information, heifer identification, and veterinarian documentation.
12. Payment by Buyer is due and payable in accordance with USDA P&S prompt pay policy upon delivery of the cattle and at such times as the value of the cattle is determined based on weight (subject to condition), price (subject to condition), and any other conditions stated at time of sale. Payment must be sent to Mid-Atlantic Cattle Sales the day after they are received by the Buyer. We request that all payments be sent by Wire Transfer, ACH, or overnight delivery of a check via FedEx or UPS. Payment sent via the U.S. Postal Service (1st Class or Priority Mail) are expected to be received within 7 business days of delivery. Any fees incurred for sending payment will be at the Buyer's expense.
13. Mid-Atlantic Cattle Sales does not warrant the harvest date on source and age verified cattle and cannot guarantee back verification on any program requiring signed affidavits or 3rd party verification. Mid-Atlantic Cattle Sales will make all efforts to ensure verifications are met, but it is the Buyer's responsibility to verify all claims of the Seller to fit specific programs prior to purchase.
14. There are no implied warranties of merchantability or fitness for a particular purpose on any livestock sold. Seller does not warrant that the livestock are free from any latent defect, condition, sickness, or disease. Seller does not assume responsibility for any loss after the livestock are delivered, which results from any latent defect, condition, sickness, or disease.





# Bid with Confidence

Manage risk and increase reward by selecting marketed calves with verified genomic data.

Make data driven decisions, look for lots marked with the IGENITY logo to get more FERTILITY, POUNDS, and PROFIT.

**Igenity<sup>®</sup>**  
Maternal

**Igenity<sup>®</sup>**  
Terminal

**Elite:** Best of the best. These calves rank genetically superior to 75% of Igenity tested cattle.

**Premier:** The next level. Based on an Igenity profile, these calves rank in the top 50% for genomic merit geared towards end-product or maternal characteristics.

**Choice:** Entry level tier. Calves have received a verified Igenity genomic profile.

All three tiers are available in both maternal and terminal.

Call NEOGEN AT 877-IGENITY to learn more



## PERFORMANCE TESTED TRAITS:

Residual Feed Intake  
Average Daily Gain  
Weaning Weight  
Yearling Weight

## CARCASS TESTED TRAITS:

Tenderness  
Marbling  
Ribeye Area  
Fat Thickness  
Hot Carcass Weight

## Catawba County Cattle Alliance

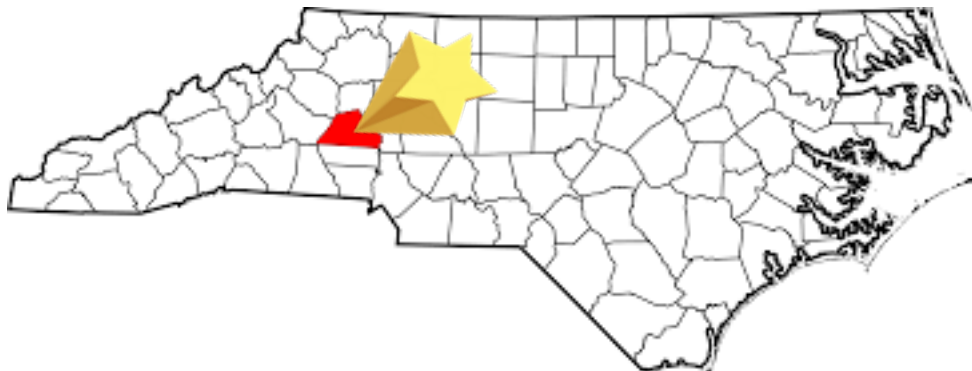
Catawba, NC    *15 miles west of Statesville, NC*

The CCCA is comprised of 8 producers who follow the same vaccination and management protocols and all use similar genetics. ***Calves are all home-raised, weaned 50+ days, and follow the NC BQA Sale Protocols.*** These cattle always perform well and the Alliance cattlemen to an excellent job of preparing their cattle. This year the CCCA will sell 4 loads of cattle.

**This year, all cattle are Verified Natural and NHTC through BeefTraxx. Cattle are 982 EID tagged and natural shipping paperwork will go with the loads.**

**Each seller will also sign an all-natural affidavit for the cattle at load out if needed.**

## CCCA Loads - Lots 1203, 1208, 1216, & 1223

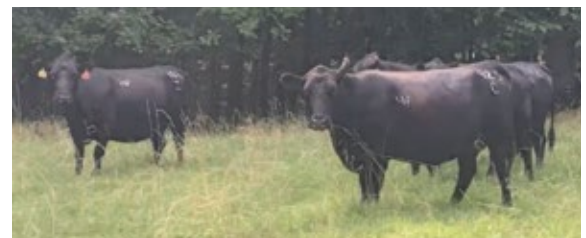
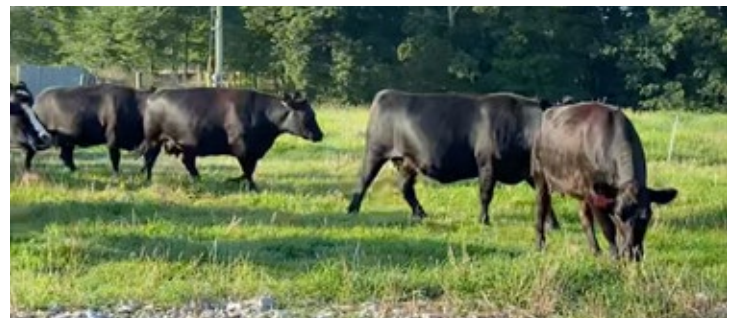


## **Bred Cows from HVF Farm**

All cows bred to calve this fall. Cows are 3-8 years old.

Contact the office for more information!

**We will start the sale selling two truckloads of these cows. ~40 head each**





**Lot 1202 1 Load of STEERS**

Price: \$ \_\_\_\_\_ Buyer # \_\_\_\_\_

**Triple M Farms Inc**

Clinton, NC - 40 miles east of Fayetteville, NC

**Home-Raised, Backgrounded, Weaned, BQA Certified****Base Weight:** 570 lbs. **Wt. Stop:** 610 lbs. **Variance:** 125 lbs.**Pickup Date:** July 26-30 **Estimated Head Count** 85**Slide/Shrink:** 2% shrink and slide \$10/cwt topside only**Weigh:** On the truck on certified scales**Notice to load:** 48-72 hours **Weaned:** 60+ days**Colors:** 60% blk/bwf, 30% ch-x, 10% red/rwf**Muscling:** 95% #1, 5% #1.5**Nutrition:** 10# ph/pd of 16% performance feed and grain with free choice oat hay and mineral**Vaccinations:** Vista Once (1x), Vista 5 (1x), Vision 7 w/somnus (1x), Vision 7 (1x)**Dewormer:** Safeguard (1x), Ivomec (1x)**Implants:** Ralgro**Genetics:** Every calf is 50% or more Angus. Sired by Angus, SimAngus, or Charolais bulls.**Natural Status:** No**Heifers Open:** N/A**Comments:** Broke to bunks and waters. A very good set of reputational home-raised steers from high-quality genetics. Calves born last Aug-October, weaned, and backgrounded.**MACS Rep:** Marcus Harward, 704-322-0840**Programs:****Flesh:** Medium**Frame:** Medium**Lot 1203 1 Load of STEERS**

Price: \$ \_\_\_\_\_ Buyer # \_\_\_\_\_

**Catawba Cattlemen's Alliance**

Catawba, NC - 15 miles west of Statesville, NC

**Home-Raised, Verified Natural, NHTC, Backgrounded, Weaned, BQA Certified****Base Weight:** 585 lbs. **Wt. Stop:** 620 lbs. **Variance:** 160 lbs.**Pickup Date:** August 4-10 **Estimated Head Count** 83**Slide/Shrink:** 1% shrink and slide \$10/cwt topside only**Weigh:** Hauled 10-29 miles, weighed on the ground on certified scales**Notice to load:** 48-72 hours **Weaned:** 60+ days**Colors:** 94% blk/bwf, 6% ch-x or red**Muscling:** 95% #1, 5% #1.5**Nutrition:** Hand fed commodity pellets with free choice mineral and pasture or hay.**Vaccinations:** Bovi-Shield Gold One Shot (1x), Bovi-Shield Gold 5 (1x), Ultrabac 7 (2x)**Dewormer:** Safeguard, LongRange**Implants:** None**Genetics:** 50-75%+ Angus. Sired by Angus or SimAngus bulls out of Angus-x-Continental cows.**Natural Status:** Verified Natural; NHTC; Seller Affidavit**Comments:** Broke to bunks and waters. Born last fall. A great set of calves from reputational producers. 7 producers on this load - all verified natural and NHTC. Range 500-660 lbs.**MACS Rep:** Jimmy Dagenhart, 704-425-3587**Programs:****Flesh:** Medium**Frame:** Medium

**Lot 1204 1 Load of STEERS**

Price: \$ \_\_\_\_\_ Buyer # \_\_\_\_\_

**Rosenbaum Feeder Cattle**

Glade Springs, VA - 15 miles east of Abingdon, VA

**Backgrounded, Weaned****Base Weight:** 650 lbs. **Wt. Stop:** 685 lbs. **Variance:** 150 lbs.**Pickup Date:** July 23-30 **Estimated Head Count** 75**Slide/Shrink:** 2% shrink and slide \$7/cwt topside only**Weigh:** Certified ground scales at farm**Notice to load:** 48 hours **Weaned:** 90+ days**Colors:** 80% blk/bwf, 20% red or ch-x**Muscling:** 90% #1, 10% #1.5**Nutrition:** 5# ph/pd of TMR feed and on rye pasture with free choice hay and minerals**Vaccinations:** Bovi-Shield Gold 5 (2x), Presponse (2x), Inforce 3 (1x), Ultrabac 7 somubac (1x), UltraChoice 8 (1x)**Dewormer:** Ivomec Pour-On (2x)**Implants:** None**Genetics:** Angus-X commercial.**Natural Status:** No**Comments:** Broke to bunks and waters. Purchased and backgrounded for 90+ days. Running together out on grass for 30-45 days.**MACS Rep:** Marcus Harward, 704-322-0840**Programs:****Flesh:** Medium**Frame:** Medium**Lot 1205 1 Load of STEERS**

Price: \$ \_\_\_\_\_ Buyer # \_\_\_\_\_

**Allen Farms - Scotty Allen**

Polkton, NC - 12 mi. south of Norwood, NC; 25 mi east of Charlotte, NC

**Home-Raised, GAP-4, Natural, Backgrounded, Weaned****Base Weight:** 675 lbs. **Wt. Stop:** 710 lbs. **Variance:** 200 lbs.**Pickup Date:** July 21-August 1 **Estimated Head Count** 72**Slide/Shrink:** 2% shrink and slide \$7/cwt topside only**Weigh:** Certified MACS ground scales at farm**Notice to load:** 48 hours **Weaned:** 50+ days**Colors:** 73 hd blk/bwf, 2 hd ch-x**Muscling:** 95% #1, 5% #1.5**Nutrition:** 16% PowerStroke feed with sudex pasture and free choice minerals and hay**Vaccinations:** Vista Once (1x), Vista 5 (1x), Vision 7 w/somnus (1x), Vision 7 (1x)**Dewormer:** Ivomec, Safeguard**Implants:** None**Genetics:** 75%+ Angus - Sired by high-performing Angus bulls that qualify for CAB Targeting the Brand out of commercial Angus cows.**Natural Status:** GAP-4; Seller Affidavit**Comments:** Broke to bunks and waters. Born last fall with complete records. Fancy set of high-quality, high-performing genetics from a reputational program. They are GAP 4 Certified and can transfer at no cost to buyer. DNA tested through NeoGen and rank high as Igenity Elite (top 25% for carcass and growth).**MACS Rep:** Bruce Shankle, 704-694-8686**Programs:**



**Lot 1206 0.5 Load of STEERS**

Price: \$ \_\_\_\_\_ Buyer # \_\_\_\_\_

**D.A. Hill Farms - David Hill**

Ansonville, NC - 35 miles east of Charlotte, NC

**Home-Raised, GAP-4, Natural, Backgrounded, Weaned****Base Weight:** 695 lbs. **Wt. Stop:** 730 lbs. **Variance:** 200 lbs.**Pickup Date:** July 27-30 **Estimated Head Count** 34**Slide/Shrink:** 2% shrink and slide \$7/cwt topside only**Weigh:** Certified MACS ground scales at farm**Notice to load:** 48 hours **Weaned:** 60+ days**Colors:** 12 hd blk/bwf, 11 hd char-x, 11 hd red/rwf**Muscling:** 90% #1, 10% #1.5**Nutrition:** 14% pellet feed with free choice pasture and minerals**Vaccinations:** Vista Once (1x), Vista 5 (1x), Vision 7 w/somnus (1x), Vision 7 (1x)**Dewormer:** Ivomec, Safeguard **Implants:** None**Genetics:** 50%+ Angus - Sired by Angus, Charolais, or Hereford bulls out of Angus-based crossbred cows.**Natural Status:** GAP-4; Seller Affidavit**Comments:** Broke to bunks and waters. Born last fall with complete records. No pink-nosed Chars on the load. Larger framed cattle that will grow and finish well at the feedyard.**MACS Rep:** Bruce Shankle, 704-694-8686**Programs:***Natural*  
**AFFIDAVIT****PrimeVAC**  
BY MERCK ANIMAL HEALTH**Flesh:** Medium**Frame:** 32 hd Medium, 2 hd Large**Lot 1207 1 Load of STEERS**

Price: \$ \_\_\_\_\_ Buyer # \_\_\_\_\_

**Donald Chriscoe Farm**

Asheboro, NC - 40 miles south of Greensboro, NC

**All-Natural, Backgrounded, Weaned****Base Weight:** 700 lbs. **Wt. Stop:** 735 lbs. **Variance:** 150 lbs.**Pickup Date:** July 23-30 **Estimated Head Count** 69**Slide/Shrink:** 2% shrink and slide \$5/cwt topside only**Weigh:** Certified ground scales at farm**Notice to load:** 24-48 hours **Weaned:** 90+ days**Colors:** 90% blk/bwf, 10% ch-x or red**Muscling:** 95% #1, 5% #1.5**Nutrition:** Haylage and DDG TMR with access to mineral, hay, and pasture**Vaccinations:** Vista 5 (2x), Nuplura (1x), Vision 7 20/20 (1x), Ocu-guard Pinkeye (1x)**Dewormer:** Ivomec Inject. (2x) **Implants:** None**Genetics:** Angus-X commercial. Mainly sired by Angus and SimAngus bulls.**Natural Status:** Owner affidavit natural - signed Meyer's affidavits from original producers.**Comments:** Broke to bunks and waters. Purchased from local producers and backgrounded for 90+ days.**MACS Rep:** Marcus Harward, 704-322-0840**Programs:***Natural*  
**AFFIDAVIT****Flesh:** Medium**Frame:** Medium

**Lot 1208 1 Load of STEERS**

Price: \$ \_\_\_\_\_ Buyer # \_\_\_\_\_

**Catawba Cattlemen's Alliance**

Catawba, NC - 15 miles west of Statesville, NC

Home-Raised, Verified Natural, NHTC, Backgrounded, Weaned, BQA Certified

**Base Weight:** 715 lbs. **Wt. Stop:** 750 lbs. **Variance:** 125 lbs.**Pickup Date:** August 4-10 **Estimated Head Count** 68**Slide/Shrink:** 1% shrink and slide \$5/cwt topside only**Weigh:** Hauled 10-20 miles, weighed on the ground on certified scales**Notice to load:** 48-72 hours **Weaned:** 60+ days**Colors:** 94% blk/bwf, 6% ch-x or red**Muscling:** 95% #1, 5% #1.5**Nutrition:** Hand fed commodity pellets with free choice mineral and pasture or hay.**Vaccinations:** Bovi-Shield Gold One Shot (1x), Bovi-Shield Gold 5 (1x), Ultrabac 7 (2x)**Dewormer:** Safeguard, LongRange**Implants:** None**Genetics:** 50-75%+ Angus. Sired by Angus or SimAngus bulls out of Angus-x-Continental cows.**Natural Status:** Verified Natural; NHTC; Seller Affidavit**Comments:** Broke to bunks and waters. Born last fall. A great set of calves from reputational producers. 6 producers on this load - all verified natural and NHTC. Range 650-775 lbs.**MACS Rep:** Jimmy Dagenhart, 704-425-3587**Programs:****Flesh:** Medium**Frame:** Medium**Lot 1209 2 Loads of STEERS**

Price: \$ \_\_\_\_\_ Buyer # \_\_\_\_\_

**Randy Ratliff**

Marshville, NC - 20 miles southeast of Charlotte, NC

Backgrounded, Weaned

**Base Weight:** 725 lbs. **Wt. Stop:** 760 lbs. **Variance:** 150 lbs.**Pickup Date:** July 21-31 **Estimated Head Count** 134**Slide/Shrink:** 2% shrink and slide \$5/cwt topside only**Weigh:** Certified MACS ground scales at farm**Notice to load:** 24-48 hours **Weaned:** 200+ days**Colors:** 100% blk/bwf**Muscling:** 80% #1, 10% #1.5**Nutrition:** Grazing pasture with 5-10 lbs of mixed feed pellet supplemented. On silage through spring, but grazing grass pastures over the summer with supplemented feed.**Vaccinations:** Vista Once (1x), Vista 5 (1x), Cavalry 9 (2x)**Dewormer:** Ivermectin (2x)**Implants:** None**Genetics:** Crossbred Angus-based.**Natural Status:** No**Comments:** Broke to bunks & waters. Purchased last fall as light 4-weights and backgrounded together for over 200 days. Northern type feeding calves.**MACS Rep:** Marcus Harward, 704-322-0840**Programs:****Flesh:** Medium**Frame:** Medium

**Lot 1210 1 Load of STEERS**

Price: \$ \_\_\_\_\_ Buyer # \_\_\_\_\_

**Randy Ratliff**

Marshville, NC - 20 miles southeast of Charlotte, NC

**Backgrounded, Weaned****Base Weight:** 730 lbs. **Wt. Stop:** 765 lbs. **Variance:** 150 lbs.**Pickup Date:** July 21-31 **Estimated Head Count** 66**Slide/Shrink:** 2% shrink and slide \$5/cwt topside only**Weigh:** Certified MACS ground scales at farm**Notice to load:** 24-48 hours **Weaned:** 200+ days**Colors:** 10 hd blk/bwf, 23 hd ch-x, 34 hd red/rwf**Muscling:** 85% #1, 15% #1.5**Nutrition:** Grazing pasture with 5-10 lbs of mixed feed pellet supplemented. On silage through spring, but grazing grass pastures over the summer with supplemented feed.**Vaccinations:** Vista Once (1x), Vista 5 (1x), Cavalry 9 (2x)**Dewormer:** Ivermectin (2x)**Implants:** None**Genetics:** All crossbred calves. 15-20% will have a flick of ear. 3-4 with tipped horns.**Natural Status:** No**Comments:** Broke to bunks & waters. Purchased last fall as light 4-weights and backgrounded together for over 200 days. A very nice set of feeding calves.**MACS Rep:** Marcus Harward, 704-322-0840**Programs:**PrimeVAC  
BY MERCK ANIMAL HEALTH**Flesh:** Medium**Frame:** Medium**Lot 1211 1 Load of STEERS**

Price: \$ \_\_\_\_\_ Buyer # \_\_\_\_\_

**Frank Howey Farms - Frank Howey Jr**

Mount Croghan, SC - 40 miles southeast of Charlotte, NC

**Home-Raised, IMI Verified Natural, GAP-4, Backgrounded, Weaned****Base Weight:** 775 lbs. **Wt. Stop:** 825 lbs. **Variance:** 150 lbs.**Pickup Date:** July 22-30 **Estimated Head Count** 63**Slide/Shrink:** No shrink and slide \$5/cwt topside only**Weigh:** Hauled 30 miles to SCLM, weighed on certified ground scales**Notice to load:** 48-72 hours **Weaned:** 60+ days**Colors:** 60% blk/bwf, 5% ch-x, 35% red/rwf**Muscling:** 95% #1, 5% #1.5**Nutrition:** 10 lbs ph/pd of 12% pellet feed with free choice pasture, hay, and VitaFerm minerals.**Vaccinations:** Vista Once (1x), Vista 5 (1x), Vision 7 (2x)**Dewormer:** Cydectin, Safeguard**Implants:** None**Genetics:** Sired by Angus, Red Angus, and SimAngus bulls out of crossbred cows.**Natural Status:** GAP-4; IMI Verified Natural; NHTC; Seller Affidavit**Comments:** Broke to bunks and waters. A very good set of high-growth steers that will finish big. Qualify for Verified Natural, NHTC, and GAP-4. A few will have a flick of ear.**MACS Rep:** Marcus Harward, 704-322-0840**Programs:**Natural  
AFFIDAVIT**Flesh:** Medium**Frame:** 90% Medium, 10% Large



**Lot 1212 1 Load of STEERS**

Price: \$ \_\_\_\_\_ Buyer # \_\_\_\_\_

**D.A. Hill Farms - David Hill**

Ansonville, NC - 35 miles east of Charlotte, NC

**Home-Raised, GAP-4, Natural, Backgrounded, Weaned****Base Weight:** 795 lbs. **Wt. Stop:** 830 lbs. **Variance:** 150 lbs.**Pickup Date:** July 22-28 **Estimated Head Count** 61**Slide/Shrink:** 2% shrink and slide \$5/cwt topside only**Weigh:** Certified MACS ground scales at farm**Notice to load:** 48 hours **Weaned:** 60+ days**Colors:** 50% blk/bwf, 50% char-x (no pink nose)**Muscling:** 95% #1, 5% #1.5**Nutrition:** 14% pellet feed with free choice pasture and minerals**Vaccinations:** Vista Once (1x), Vista 5 (1x), Vision 7 w/somnus (1x), Vision 7 (1x)**Dewormer:** Ivomec, Safeguard**Implants:** None**Genetics:** 50%+ Angus - Sired by Angus, Charolais, or Hereford bulls out of Angus-based crossbred cows.**Natural Status:** GAP-4; Seller Affidavit**Comments:** Broke to bunks and waters. Born last fall with complete records. No pink-nosed Chars on the load. Larger framed cattle that will grow and finish well at the feedyard.**MACS Rep:** Bruce Shankle, 704-694-8686**Programs:***Natural*  
**AFFIDAVIT***global animal*  
PARTNERSHIP**PrimeVAC**  
BY MERCK ANIMAL HEALTH**Flesh:** Medium**Frame:** 80% Medium, 20% Large**Lot 1213 1 Load of STEERS**

Price: \$ \_\_\_\_\_ Buyer # \_\_\_\_\_

**P & D Farm**

Wilkesboro, NC - 35 miles northwest of Statesville, NC

**Backgrounded, Weaned****Base Weight:** 800 lbs. **Wt. Stop:** 835 lbs. **Variance:** 125 lbs.**Pickup Date:** July 23-28 **Estimated Head Count** 61**Slide/Shrink:** 1% shrink and slide \$5/cwt topside only**Weigh:** Hauled 30 miles to HBLM, weighed on certified ground scales**Notice to load:** 48-72 hours **Weaned:** 150+ days**Colors:** 94% blk/bwf, 2-3 hd ch-x**Muscling:** 95% #1, 5% #1.5**Nutrition:** 4 lbs of grower feed with free choice pasture, mineral, and hay**Vaccinations:** Vista Once (1x), Vista 5 (1x), Vision 7 w/somnus (2x)**Dewormer:** Safeguard, Dectomax**Implants:** None**Genetics:** Angus-X commercial.**Natural Status:** No**Comments:** Broke to bunks & waters. Purchased and put together as 3 and 4-weights and backgrounded together. Hand fed a little to keep them coming up, mainly running out on pasture. A very nice set of feeding calves.**MACS Rep:** Marcus Harward, 704-322-0840**Programs:****PrimeVAC**  
BY MERCK ANIMAL HEALTH**Flesh:** Medium**Frame:** Medium

**Lot 1214 0.7 Load of STEERS**

Price: \$ \_\_\_\_\_ Buyer # \_\_\_\_\_

**Fall Line Farm - Dr. Les Sales**

Crawfordville, GA - 40 miles southeast of Athens, GA

**Home-Raised, GAP-4, Natural, Backgrounded, Weaned****Base Weight:** 815 lbs. **Wt. Stop:** 850 lbs. **Variance:** 150 lbs.**Pickup Date:** July 26-30 **Estimated Head Count** 40-45**Slide/Shrink:** No shrink and slide \$5/cwt topside only**Weigh:** Hauled 20 miles, weighed on certified ground scales**Notice to load:** 48-72 hours **Weaned:** 60+ days**Colors:** 98% blk, 1 hd ch-x**Muscling:** 95% #1, 5% #1.5**Nutrition:** 10 lbs ph/pd of 16% grower feed with free choice pasture, hay, and minerals.**Vaccinations:** Bovi-Shield Gold FP5 L5 (1x), Pyramid 5 w/presponse (2x), Vision 7 w/somnus (2x), Multimin (1x)**Dewormer:** Synanthic (1x), Dectomax (2x) **Implants:** None**Genetics:** 75%+ Angus - Sired by Angus bulls out of mostly straight Angus cows. 50% AI sired by ABS bulls Southside & Magnitude. Clean up bulls sired by GAR Surefire and SAV Mustang**Natural Status:** GAP-4; Seller Affidavit**Comments:** Broke to bunks and waters. Born last fall. Excellent Angus genetics under a great herd health program. 40-45 head of steers for a partial load - have 12-15 head of heifers at 675 can be used to make load ~42,000 lbs if buyer wants them (sell \$10 back).**MACS Rep:** David Landreth, 864-444-8214**Programs:****Natural AFFIDAVIT**

global animal PARTNERSHIP

SelectVAC

ABS

MEAT QUALITY ASSURANCE GEORGIA

**Flesh:** Medium**Frame:** Medium**Lot 1215 1 Load of STEERS**

Price: \$ \_\_\_\_\_ Buyer # \_\_\_\_\_

**Wester Farms**

Louisburg, NC - 30 miles northeast of Raleigh, NC

**Home-Raised, Backgrounded, Weaned, BQA Certified****Base Weight:** 825 lbs. **Wt. Stop:** 860 lbs. **Variance:** 125 lbs.**Pickup Date:** August 2-6 **Estimated Head Count** 59**Slide/Shrink:** 2% shrink and slide \$5/cwt topside only**Weigh:** Hauled 10 miles, weighed on the truck**Notice to load:** 48 hours **Weaned:** 45+ days**Colors:** 57 hd blk/bwf, 2 hd ch-x**Muscling:** 100% #1**Nutrition:** TMR Ration corn silage, corn gluten, cotton by product, veg scraps, rumensin with free choice mineral, pasture, and hay**Vaccinations:** KCH Market Ready - Pyramid 5 + Presponse (1x), Pyramid 5 (1x), Caliber 7 (2x), Inforce 3 (1x), Multimin (1x)**Dewormer:** Dectomax, Safeguard**Implants:** Synovex S**Genetics:** 50-75% Angus - Sired by Angus, SimAngus, or Balancer bulls out of Angus, SimAngus, or Balancer based cows.**Natural Status:** No**Comments:** Broke to bunks and waters. Born last fall with complete records. An excellent set of high growth steers from a reputational program that will feed and finish well.**MACS Rep:** Catherine Edwards, 704-550-7920**Programs:**

MARKET READY

**Flesh:** Medium**Frame:** Medium

**Lot 1216 1 Load of STEERS**

Price: \$ \_\_\_\_\_ Buyer # \_\_\_\_\_

**Catawba Cattlemen's Alliance**

Catawba, NC - 15 miles west of Statesville, NC

**Home-Raised, Verified Natural, NHTC, Backgrounded, Weaned, BQA Certified****Base Weight:** 835 lbs. **Wt. Stop:** 870 lbs. **Variance:** 175 lbs.**Pickup Date:** August 4-10 **Estimated Head Count** 58**Slide/Shrink:** 1% shrink and slide \$5/cwt topside only**Weigh:** Hauled 10-20 miles, weighed on the ground on certified scales**Notice to load:** 48-72 hours **Weaned:** 60+ days**Colors:** 94% blk/bwf, 6% ch-x or red**Muscling:** 95% #1, 5% #1.5**Nutrition:** Hand fed commodity pellets with free choice mineral and pasture or hay.**Vaccinations:** Bovi-Shield Gold One Shot (1x), Bovi-Shield Gold 5 (1x), Ultrabac 7 (2x)**Dewormer:** Safeguard, LongRange**Implants:** None**Genetics:** 50-75%+ Angus. Sired by Angus or SimAngus bulls out of Angus-x-Continental cows.**Natural Status:** Verified Natural; NHTC; Seller Affidavit**Comments:** Broke to bunks and waters. Born last fall. A great set of calves from reputational producers. 5 producers on this load - all verified natural and NHTC. Range 780-955 lbs.**MACS Rep:** Jimmy Dagenhart, 704-425-3587**Programs:****Flesh:** Medium**Frame:** Medium**Lot 1217 1 Load of STEERS**

Price: \$ \_\_\_\_\_ Buyer # \_\_\_\_\_

**Wester Farms**

Louisburg, NC - 30 miles northeast of Raleigh, NC

**Home-Raised, Backgrounded, Weaned, BQA Certified****Base Weight:** 875 lbs. **Wt. Stop:** 910 lbs. **Variance:** 125 lbs.**Pickup Date:** August 2-6 **Estimated Head Count** 55**Slide/Shrink:** 2% shrink and slide \$5/cwt topside only**Weigh:** Hauled 10 miles, weighed on the truck**Notice to load:** 48 hours **Weaned:** 45+ days**Colors:** 52 hd blk/bwf, 3 hd red**Muscling:** 100% #1**Nutrition:** TMR Ration corn silage, corn gluten, cotton by product, veg scraps, rumensin with free choice mineral, pasture, and hay**Vaccinations:** KCH Market Ready - Pyramid 5 + Presponse (1x), Pyramid 5 (1x), Caliber 7 (2x), Inforce 3 (1x), Multimin (1x)**Dewormer:** Dectomax, Safeguard**Implants:** Synovex S**Genetics:** 50-75% Angus - Sired by Angus, SimAngus, or Balancer bulls out of Angus, SimAngus, or Balancer based cows.**Natural Status:** No**Comments:** Broke to bunks and waters. Born last fall with complete records. An excellent set of high growth steers from a reputational program that will feed and finish well.**MACS Rep:** Catherine Edwards, 704-550-7920**Programs:****Flesh:** Medium**Frame:** Medium



**Lot 1218 1 Load of HEIFERS**

Price: \$ \_\_\_\_\_ Buyer # \_\_\_\_\_

**Triple M Farms Inc**

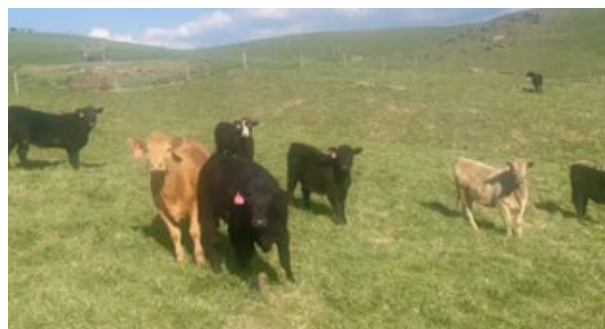
Clinton, NC - 40 miles east of Fayetteville, NC

**Home-Raised, Backgrounded, Weaned, BQA Certified****Base Weight:** 540 lbs. **Wt. Stop:** 580 lbs. **Variance:** 125 lbs.**Pickup Date:** July 26-30 **Estimated Head Count** 90**Slide/Shrink:** 2% shrink and slide \$10/cwt topside only**Weigh:** On the truck on certified scales**Notice to load:** 48-72 hours **Weaned:** 60+ days**Colors:** 60% blk/bwf, 30% ch-x, 10% red/rwf**Muscling:** 95% #1, 5% #1.5**Nutrition:** 10# ph/pd of 16% performance feed and grain with free choice oat hay and mineral**Vaccinations:** Vista Once (1x), Vista 5 (1x), Vision 7 w/somnus (1x), Vision 7 (1x)**Dewormer:** Safeguard (1x), Ivomec (1x)**Implants:** None**Genetics:** Every calf is 50% or more Angus. Sired by Angus, SimAngus, or Charolais bulls.**Natural Status:** No**Heifers Open:** Guaranteed open, not palpated.**Comments:** Broke to bunks and waters. A very good set of reputational home-raised heifers from high-quality genetics. Calves born last Aug-October, weaned, and backgrounded.**MACS Rep:** Marcus Harward, 704-322-0840**Programs:****Flesh:** Medium**Frame:** Medium**Lot 1219 1 Load of HEIFERS**

Price: \$ \_\_\_\_\_ Buyer # \_\_\_\_\_

**Rosenbaum Feeder Cattle**

Glade Springs, VA - 15 miles east of Abingdon, VA

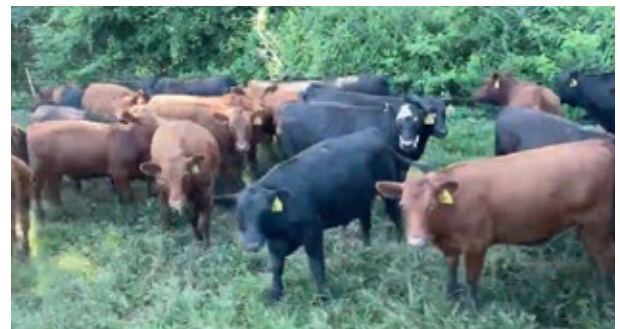
**Backgrounded, Weaned****Base Weight:** 585 lbs. **Wt. Stop:** 620 lbs. **Variance:** 150 lbs.**Pickup Date:** July 23-30 **Estimated Head Count** 83**Slide/Shrink:** 2% shrink and slide \$10/cwt topside only**Weigh:** Certified ground scales at farm**Notice to load:** 48 hours **Weaned:** 90+ days**Colors:** 80% blk/bwf, 20% red or ch-x**Muscling:** 90% #1, 10% #1.5**Nutrition:** 5# ph/pd of TMR feed and on rye pasture with free choice hay and minerals**Vaccinations:** Bovi-Shield Gold 5 (2x), Presponse (2x), Inforce 3 (1x), Ultrabac 7 somubac (1x), UltraChoice 8 (1x)**Dewormer:** Ivomec Pour-On (2x)**Implants:** None**Genetics:** Angus-X commercial.**Natural Status:** No**Heifers Open:** Guaranteed open, not palpated.**Comments:** Broke to bunks and waters. Purchased and backgrounded for 90+ days. Running together out on grass for 30-45 days.**MACS Rep:** Marcus Harward, 704-322-0840**Programs:****Flesh:** Medium**Frame:** Medium

**Lot 1220 1 Load of HEIFERS**

Price: \$ \_\_\_\_\_ Buyer # \_\_\_\_\_

**Hope Farms - Mike Hope**

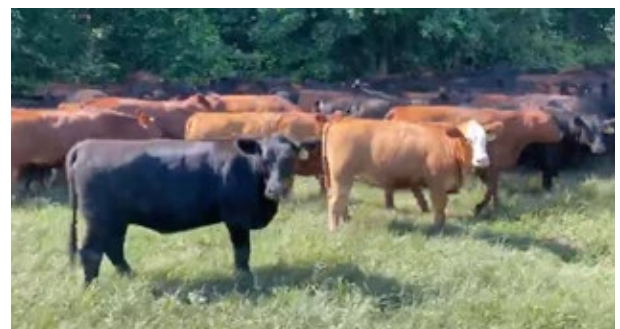
Roseboro, NC - 10 miles west of Clinton, NC

**Home-Raised, GAP Natural, Backgrounded, Weaned****Base Weight:** 600 lbs. **Wt. Stop:** 640 lbs. **Variance:** 125 lbs.**Pickup Date:** July 23-30 **Estimated Head Count** 81**Slide/Shrink:** No shrink and slide \$8/cwt topside only**Weigh:** Hauled 20 miles, weighed on certified ground scales**Notice to load:** 48 hours **Weaned:** 60+ days**Colors:** 50% blk/bwf, 50% red/rwf (Red Angus)**Muscling:** 95% #1, 5% #1.5**Nutrition:** No creep feed prior to weaning. Hand fed 5 lb/day of commodity pellet now with hay and rye grass and free choice minerals.**Vaccinations:** Vista Once SQ (2x), Vision 7 w/spur (2x)**Dewormer:** LongRange (1x), Matrix (1x)**Implants:** None**Genetics:** Sired by Angus and Red Angus bulls out of Angus-X cows.**Natural Status:** GAP-4; Seller Affidavit**Heifers Open:** Guaranteed open, not palpated.**Comments:** Broke to bunks and waters. Excellent set of reputational calves that are high percentage Angus or Red Angus genetics. Calves will feed out and finish well.**MACS Rep:** Jeff Martin, 910-379-9173**Programs:****Natural AFFIDAVIT****PrimeVAC**  
BY MERCK ANIMAL HEALTH**Flesh:** Medium**Frame:** Medium**Lot 1221 1 Load of HEIFERS**

Price: \$ \_\_\_\_\_ Buyer # \_\_\_\_\_

**Hope Farms - Mike Hope**

Roseboro, NC - 10 miles west of Clinton, NC

**Home-Raised, GAP Natural, Backgrounded, Weaned****Base Weight:** 650 lbs. **Wt. Stop:** 690 lbs. **Variance:** 125 lbs.**Pickup Date:** July 23-30 **Estimated Head Count** 75**Slide/Shrink:** No shrink and slide \$7/cwt topside only**Weigh:** Hauled 20 miles, weighed on certified ground scales**Notice to load:** 48 hours **Weaned:** 60+ days**Colors:** 50% blk/bwf, 50% red/rwf (Red Angus)**Muscling:** 95% #1, 5% #1.5**Nutrition:** No creep feed prior to weaning. Hand fed 5 lb/day of commodity pellet now with hay and rye grass and free choice minerals.**Vaccinations:** Vista Once SQ (2x), Vision 7 w/spur (2x)**Dewormer:** LongRange (1x), Matrix (1x)**Implants:** None**Genetics:** Sired by Angus and Red Angus bulls out of Angus-X cows.**Natural Status:** GAP-4; Seller Affidavit**Heifers Open:** Guaranteed open, not palpated.**Comments:** Broke to bunks and waters. Excellent set of reputational calves that are high percentage Angus or Red Angus genetics. Calves will feed out and finish well.**MACS Rep:** Jeff Martin, 910-379-9173**Programs:****Natural AFFIDAVIT****PrimeVAC**  
BY MERCK ANIMAL HEALTH**Flesh:** Medium**Frame:** Medium

**Lot 1222 0.8 Load of HEIFERS**

Price: \$ \_\_\_\_\_ Buyer # \_\_\_\_\_

**D.A. Hill Farms - David Hill**

Ansonville, NC - 35 miles east of Charlotte, NC

**Home-Raised, GAP-4, Natural, Backgrounded, Weaned****Base Weight:** 635 lbs. **Wt. Stop:** 685 lbs. **Variance:** 200 lbs.**Pickup Date:** July 26-30 **Estimated Head Count** 60**Slide/Shrink:** 2% shrink and slide \$7/cwt topside only**Weigh:** Certified MACS ground scales at farm**Notice to load:** 48 hours **Weaned:** 60+ days**Colors:** 36 hd blk/bwf, 18 hd char-x, 6 hd red/rwf**Muscling:** 95% #1, 5% #1.5**Nutrition:** 14% pellet feed with free choice pasture and minerals**Vaccinations:** Vista Once (1x), Vista 5 (1x), Vision 7 w/somnus (1x), Vision 7 (1x)**Dewormer:** Ivomec, Safeguard**Implants:** None**Genetics:** 50%+ Angus - Sired by Angus, Charolais, or Hereford bulls out of Angus-based crossbred cows.**Natural Status:** GAP-4; Seller Affidavit**Heifers Open:** Guaranteed open, not palpated.**Comments:** Broke to bunks and waters. Born last fall with complete records. No pink-nosed Chars on the load. Larger framed cattle that will grow and finish well at the feedyard.**MACS Rep:** Bruce Shankle, 704-694-8686**Programs:****Natural AFFIDAVIT****global animal PARTNERSHIP****PrimeVAC** BY MERCK ANIMAL HEALTH**Flesh:** Medium**Frame:** Medium**Lot 1223 1 Load of HEIFERS**

Price: \$ \_\_\_\_\_ Buyer # \_\_\_\_\_

**Catawba Cattlemen's Alliance**

Catawba, NC - 15 miles west of Statesville, NC

**Home-Raised, Verified Natural, NHTC, Backgrounded, Weaned, BQA Certified****Base Weight:** 665 lbs. **Wt. Stop:** 700 lbs. **Variance:** 165 lbs.**Pickup Date:** August 4-10 **Estimated Head Count** 73**Slide/Shrink:** 1% shrink and slide \$7/cwt topside only**Weigh:** Hauled 10-20 miles, weighed on the ground on certified scales**Notice to load:** 48-72 hours **Weaned:** 60+ days**Colors:** 94% blk/bwf, 6% ch-x or red**Muscling:** 95% #1, 5% #1.5**Nutrition:** Hand fed commodity pellets with free choice mineral and pasture or hay.**Vaccinations:** Bovi-Shield Gold One Shot (1x), Bovi-Shield Gold 5 (1x), Ultrabac 7 (2x)**Dewormer:** Safeguard, LongRange**Implants:** None**Genetics:** 50-75%+ Angus. Sired by Angus or SimAngus bulls out of Angus-x-Continental cows.**Natural Status:** Verified Natural; NHTC; Seller Affidavit**Heifers Open:** Guaranteed open, not palpated.**Comments:** Broke to bunks and waters. Born last fall. A great set of calves from reputational producers. 8 producers on this load - all verified natural and NHTC. Range 600-765 lbs.**MACS Rep:** Jimmy Dagenhart, 704-425-3587**Programs:****Natural AFFIDAVIT****BeefTrax** VERIFY TO QUALIFY**NHTC****SelectVAC****Flesh:** Medium**Frame:** Medium



**Lot 1224 1 Load of HEIFERS**

Price: \$ \_\_\_\_\_ Buyer # \_\_\_\_\_

**Donald Chriscoe Farm**

Asheboro, NC - 40 miles south of Greensboro, NC

**All-Natural, Backgrounded, Weaned****Base Weight:** 700 lbs. **Wt. Stop:** 735 lbs. **Variance:** 150 lbs.**Pickup Date:** July 23-30 **Estimated Head Count** 69**Slide/Shrink:** 2% shrink and slide \$5/cwt topside only**Weigh:** Certified ground scales at farm**Notice to load:** 24-48 hours **Weaned:** 90+ days**Colors:** 90% blk/bwf, 10% ch-x or red**Muscling:** 95% #1, 5% #1.5**Nutrition:** Haylage and DDG TMR with access to mineral, hay, and pasture**Vaccinations:** Vista 5 (2x), Nuplura (1x), Vision 7 20/20 (1x), Ocu-guard Pinkeye (1x)**Dewormer:** Ivomec Inject. (2x)**Implants:** None**Genetics:** Angus-X commercial. Mainly sired by Angus and SimAngus bulls.**Natural Status:** Owner affidavit natural**Heifers Open:** Palpated, guaranteed open.**Comments:** Broke to bunks and waters. Purchased from local producers and together for 90+ days. Owner affidavit natural - signed Meyer's affidavits from original producers.**MACS Rep:** Marcus Harward, 704-322-0840**Programs:***Natural*  
**AFFIDAVIT****Flesh:** Medium**Frame:** Medium**Lot 1225 2 Loads of HEIFERS**

Price: \$ \_\_\_\_\_ Buyer # \_\_\_\_\_

**P & D Farm**

Wilkesboro, NC - 35 miles northwest of Statesville, NC

**Backgrounded, Weaned****Base Weight:** 775 lbs. **Wt. Stop:** 810 lbs. **Variance:** 150 lbs.**Pickup Date:** July 23-28 **Estimated Head Count** 125**Slide/Shrink:** 1% shrink and slide \$5/cwt topside only**Weigh:** Hauled 30 miles to HBLM, weighed on certified ground scales**Notice to load:** 48-72 hours **Weaned:** 150+ days**Colors:** 95% blk/bwf, 5% ch-x**Muscling:** 95% #1, 5% #1.5**Nutrition:** 4 lbs of grower feed with free choice pasture, mineral, and hay**Vaccinations:** Vista Once (1x), Vista 5 (1x), Vision 7 w/somnus (2x)**Dewormer:** Safeguard, Dectomax**Implants:** None**Genetics:** Angus-X commercial.**Natural Status:** No**Heifers Open:** Guaranteed open, not palpated.**Comments:** Broke to bunks & waters. Purchased and put together as 3 and 4-weights and backgrounded together. Hand fed a little to keep them coming up, mainly running out on pasture. A very nice set of feeding calves.**MACS Rep:** Marcus Harward, 704-322-0840**Programs:****PrimeVAC**  
BY MERCK ANIMAL HEALTH**Flesh:** Medium**Frame:** Medium

**Lot 1226 1 Load of STRS/HFRS**

Price: \$ \_\_\_\_\_ Buyer # \_\_\_\_\_

**Rocking H Cattle Company**

Gold Hill, NC - 40 miles northeast of Charlotte, NC

**Home-Raised, Verified Natural, GAP-4, BeefCare, NHTC, Backgrounded****~30 Steers Wt: 550 lbs. Wt. Stop: 585 lbs. Variance: 150 lbs.****~60 Hfrs Wt: 550 lbs. Wt. Stop: 585 lbs. Variance: 150 lbs.****Heifers sell \$0.15/cwt back****Pickup Date:** July 23-30**Slide/Shrink:** 2% shrink and slide \$10/cwt topside only**Weigh:** Certified MACS ground scales at farm**Notice:** 48 hours **Weaned:** 60+ days**Colors:** 92% blk/bwf, 8% ch-x or red**Muscling:** 95% #1, 5% #1.5**Nutrition:** TMR (silage, wet corn gluten, gin trash, soyhulls) with free choice mineral and hay.**Vaccinations:** Vista Once (1x), Vista 5 (1x), Vision 7 (2x)**Dewormer:** Cydectin, LongRange **Implants:** None**Genetics:** Sired by Angus & SimAngus bulls out of Angus-X cows. 60-75% Angus, 25-40% continental.**Natural Status:** GAP-4; BeefCare; Verified Natural; NHTC; Seller Affidavit. **Heifers Open:** Palpated, guaranteed open**Comments:** Broke to bunks and waters. BQA Certified. GAP-4 certificate can transfer at no cost. Can be EID tagged at load out for verified natural status. \*\*115 head to sort a load out of\*\***MACS Rep:** Marcus Harward, 704-322-0840**Flesh:** Medium**Frame:** Medium**Programs:****Lot 1227 1 Load of STRS/HFRS**

Price: \$ \_\_\_\_\_ Buyer # \_\_\_\_\_

**Wes Knight**

Honea Path, SC - 20 miles south of Greenville, SC

**Home-Raised, GAP Natural, Backgrounded, Weaned****~35 Steers Wt: 725 lbs. Wt. Stop: 760 lbs. Variance: 150 lbs.****~35 Hfrs Wt: 650 lbs. Wt. Stop: 685 lbs. Variance: 150 lbs.****Heifers sell \$0.08/cwt back****Pickup Date:** August 2-6**Slide/Shrink:** No shrink and slide \$5/cwt topside only**Weigh:** Hauled 20 miles, weighed on certified ground scales**Notice:** 48 hours **Weaned:** 60+ days**Colors:** 96% blk/bwf, 4% ch-x**Muscling:** 95% #1, 5% #1.5**Nutrition:** 6-7# per head per day of 13% CPC Grower with free choice mineral, pasture, and hay**Vaccinations:** Vista Once SQ (1x), ViraShield 6 (1x), Vision 7 w/somnus (2x)**Dewormer:** Eprinex **Implants:** None**Genetics:** Sired by Angus & SimAngus bulls out of high % Angus cows. High marb & \$B. Yon Family Farms & Black Crest genetics. Angus sires - Full Force, Ten X, Belton. SimAngus sire - Olie.**Natural Status:** GAP-4; Seller Affidavit **Heifers Open:** Guaranteed open, not palpated**Comments:** Broke to bunks and waters. A fancy set of GAP, reputational cattle that are very docile. Out of high-performing genetics that will feed well at the feedyard.**MACS Rep:** David Landreth, 864-444-8214**Flesh:** Medium**Frame:** Medium**Programs:**

## **UPCOMING VIDEO SALE SCHEDULE**

***FIRST and THIRD Tuesdays of the month at 1:00 pm est.***

**August 3  
August 17  
September 7  
September 21**

**October 5  
October 19  
November 2  
November 16  
December 7**



28978 Misenheimer Rd • Richfield, NC 28137  
Brooke Harward: 704-322-9770 • Marcus Harward: 704-322-0840

info@macsvideo.com • [www.MACSvideo.com](http://www.MACSvideo.com)