



**MID-ATLANTIC**  
CATTLE SALES

*A Family Owned and Operated  
Livestock Video Auction*

**WWW.MACSVIDEO.COM**

---

**MARCH 6, 2019**

Start Time: 9:30 AM est. / 8:30 AM cst.

Marcus Harward: 704-322-0840

Office: 704-463-5828

# Video Sale INFORMATION

Video sales are a marketing mechanism that have grown in popularity due to the opportunities they present to producers who deal in large numbers of stocker and feeder cattle. Cattle are generally marketed in trailer-load lots weighing approximately 48,500 pounds; however, we can also sell "partial loads" if there are not enough cattle to make a full trailer-load. Before the sale, a representative from MACS goes to the farm to record video of the cattle while also documenting important information about the cattle including breed, frame, muscling, and fleshing as well as health and nutrition programs. *The following catalog provides this information from our consignors and contractors to assist with marketing the consigned cattle. If you have any questions regarding the stated information, please contact a MACS representative listed throughout this catalog.*

## SALE DATE & TIME:

**March 6, 2019 - Wednesday**

**9:30 am est. | 8:30 am cst.**

## CONTACT:

Office .....704-463-5828

Marcus Harward .....704-322-0840

Bruce Shankle .....704-694-8686

Brooke Harward .....704-322-9770

macsvideoauction@gmail.com

## WEBSITES:

**www.MACSvideo.com**

View catalog, videos, and additional updates online on our website.

**www.YouTube.com/MACSvideoauction**

All videos of sale cattle are posted directly on our YouTube channel listed above.

## ANNOUNCEMENTS:

Announcements made on sale day will take precedence over what is stated in the catalog.

## TERMS & CONDITIONS:

- Most loads have weight stops at 25-50 lbs. over the base weight. The individual weight stops are posted on each lot.
- Cattle that are picked up after the stated delivery dates will be subject to a 3# per day increase on the base weight and any weight stops for each day late after the last stated delivery date.
- Payment by Buyer is due to Mid-Atlantic Cattle Sales at such times as the value of the cattle is determined based on weight (subject to condition), price (subject to condition), and any other conditions stated at time of sale. All payment due will be in accordance with USDA P & S prompt pay policy.



Family owned and operated since 2010

## Bidding Options

*We want to offer you the best opportunities we can to participate in our sales each month. Below are three options for bidding on the sale.*

### 1. Conference Call

The most common resource used is our conference call line. Contact Marcus or Brooke prior to the sale to receive a buyer's number. After 9:15 est. on sale day, you can call the auction number to listen and bid on the sale. *Please keep background noise to a minimum as we will have multiple people on the line.*

**CALL-IN NUMBER: 1-866-906-9888**

**PASSCODE: 9461720 #**

*When asked for your name, you may state your name OR simply press the # sign to enter the call.*

***To mute your phone, press \*6. To un-mute, press \*6 again.***



### 2. Internet Viewing & Bidding

To view the sale or bid online, visit [www.DVAuction.com](http://www.DVAuction.com). Find the "Mid-Atlantic Cattle Sales (Richfield, NC)" sale and click on "Details." From this page you can view the catalog, videos, or log in to watch the sale. If you have an account, log in and view the sale. If you do not, you must create an account under the "Create New Account" tab in the upper left hand corner of the screen. You will need to confirm this account through your e-mail. It is best to do this at least a day before the sale.

**You DO NOT have to be approved just to watch the sale but you will still need to create an account with DVAuction.**

***To register for a buyer's number, call Brooke at 704-322-9770 prior to the sale to be approved to bid online.***

### 3. Absentee Bidding

For people who can not view the sale at sale time, we have independent contractors who can assist you with absentee bidding. Contact Marcus at 704-322-0840 for more information.

*"Let us acknowledge the Lord; let us press on to acknowledge him. As surely as the sun rises, he will appear; he will come to us like the winter rains, like the spring rains that water the earth."*

**Hosea 6:3 (NIV)**

# TABLE OF CONTENTS

## March 6, 2019

Video Sale Information	Page 2
Table of Contents	Page 3
Lot 9032 1 Load Steers 550 lbs. Donald Chriscoe Farm	Page 4
Lot 9033 1 Load Steers 585 lbs. Dixon Family Farms	Page 4
Lot 9034 1 Load Steers 640 lbs. Hannah Cattle Company	Page 5
Lot 9035 2 Loads Steers 650 lbs. Donald Chriscoe Farm	Page 5
Lot 9036 2 Loads Steers 750 lbs. Donald Chriscoe Farm	Page 6
Lot 9037 1 Load Steers 775 lbs. Circle T Farm <b>**All-Natural**</b>	Page 6
Lot 9038 1 Load Steers 800 lbs. Rocking H Cattle Co. <b>**All-Natural**</b>	Page 7
Lot 9039 1 Load Steers 800 lbs. O'Neill Cattle Company	Page 7
Lot 9040 2 Loads Steers 800 lbs. Donald Chriscoe Farm	Page 8
Lot 9041 2 Loads Steers 850 lbs. Donald Chriscoe Farm	Page 8
Lot 9042 1 Load Heifers 550 lbs. Donald Chriscoe Farm	Page 9
Lot 9043 1 Load Heifers 650 lbs. Donald Chriscoe Farm	Page 9
Lot 9044 1 Load Heifers 725 lbs. Rocking H Cattle Co. <b>**All-Natural**</b>	Page 10
Lot 9045 1 Load Heifers 750 lbs. Donald Chriscoe Farm	Page 10
Lot 9046 1 S. Load Steers 765 lbs. Hill Creek Farms <b>**All-Natural**</b> Heifers 700 lbs.	Page 11
Lot 9047 1 S. Load Steers 770 lbs. McDannald Cattle Co. <b>**All-Natural**</b> Heifers 720 lbs.	Page 11
Lot 9048 1 S. Load Steers 775 lbs. Frank Howey Farm <b>**All-Natural**</b> Heifers 750 lbs.	Page 12
Lot 9049 1 S. Load Steers 775 lbs. K Farms <b>**All-Natural**</b> Heifers 750 lbs.	Page 12
Lot 9050 1 S. Load Steers 785 lbs. Sandy Hill Farms <b>**All-Natural**</b> Heifers 700 lbs.	Page 13
Lot 9051 1 S. Load Steers 835 lbs. McDannald Cattle Co. <b>**All-Natural**</b> Heifers 850 lbs.	Page 13
Graded Feeder Calf Sale Schedule	Page 14
Upcoming Video Sale Schedule	Page 15

Most loads have weight stops at 25-50 lbs. over the base weight.  
The individual weight stops are posted on each lot. →



Cattle that are picked up after the stated delivery dates will be subject to a 3# per day increase on the base weight and any weight stops for each day late after the last stated delivery date.

**Lot 9032 STEERS 1 Load ~90 head**

Price: \$ \_\_\_\_\_ Buyer # \_\_\_\_\_

**Base Weight:** 550 lbs. **Wt Stop:** 575 lbs. **Variance:** 125 lbs.**Contractor:** Marcus Harward 704-322-0840**Donald Chriscoe Farm**

Asheboro, NC

40 miles south of Greensboro, NC



<b>BLK/BWF</b>	92%	<b>#1</b>	95%	<b>FRAME:</b> Medium
<b>CH-X</b>	4%	<b>#1<sup>1/2</sup></b>	5%	
<b>RED</b>	4%	<b>#2</b>		<b>FLESH:</b> Medium
<b>RWF</b>				
<b>Other</b>				

**Delivery Date:** March 14 - 20**Shrink:** 2%**Notice to load:** 24 - 48 hours**Slide:** \$6/cwt topside only**Conditions:** Weighed on the ground on Certified Scales.**Nutrition:** Haylage and DDG TMR with access to mineral, hay, and some pasture.**Vaccinations:** Bovi-Shield Gold 5 (2x), Vision 7 20/20 (1x), Nuplura (1x), Occuguard Pinkeye**Implants:** None**Dewormer:** Ivomec Inject (2x)**Genetics:** Angus-X commercial. Sired by Angus and SimAngus bulls.**Other:** Weaned 90+ days. Bunk broke, broke to waters.**Backgrounded, Weaned, BQA Certified**

A very good set of reputational steers from Donald Chriscoe. They have been weaned for over 90 days, are bunk broke, broke to Ritchie waters, and under a good health program. They were purchased from local producers, mainly using high-quality Angus bulls on Angus-X cows.

**Lot 9033 STEERS 3/4 Load 60 head**

Price: \$ \_\_\_\_\_ Buyer # \_\_\_\_\_

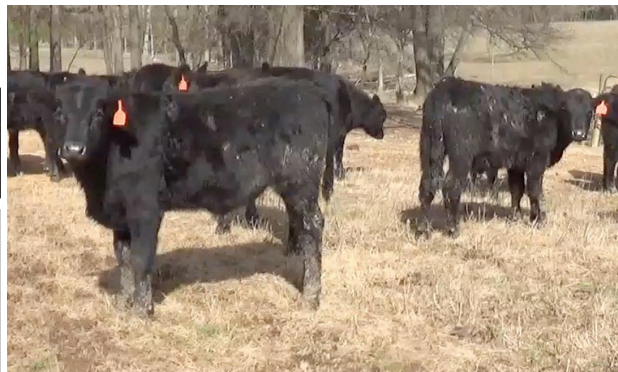
**Base Weight:** 585 lbs. **Wt Stop:** 620 lbs. **Variance:** 150 lbs.**Contractor:** Marcus Harward 704-322-0840**Dixon Family Farms**

Graham, NC

20 miles east of Greensboro, NC



<b>BLK/BWF</b>	100%	<b>#1</b>	90%	<b>FRAME:</b> Medium
<b>CH-X</b>		<b>#1<sup>1/2</sup></b>	10%	
<b>RED</b>		<b>#2</b>		<b>FLESH:</b> Medium-Thin
<b>RWF</b>				
<b>Other</b>				



SelectVAC

**Delivery Date:** ASAP by March 15**Shrink:** 2%**Notice to load:** 48 hours**Slide:** \$6/cwt topside only**Conditions:** Hauled 5 miles, weighed on the truck.**Nutrition:** A little silage with grain on top with pasture grass, hay, and free choice minerals.**Vaccinations:** Bovi-Shield Gold One Shot (1x), Bovi-Shield Gold 5 (1x), Ultrabac 7 (2x)**Implants:** None**Dewormer:** Ivomec Injectable**Genetics:** Angus-X commercial. Sired by Angus bulls.**Other:** Weaned 90+ days. Bunk broke, broke to waters.**Backgrounded, Weaned, BQA Certified**

A very good set of backgrounded, grass-flesh steers. Calves were purchased as 3 weights and backgrounded at the farm. They were all knife cut and double vaccinated. They have been running on grass with just a little silage and grain. Calves would work great to go to a grazing program or go to feed. A fancy set of 60 steers at about 35,000 lbs.

**Lot 9034 STEERS 1 Load ~77 head**

Price: \$ \_\_\_\_\_ Buyer # \_\_\_\_\_

**Base Weight:** 640 lbs. **Wt Stop:** 675 lbs. **Variance:** 150 lbs.**Contractor:** Marcus Harward 704-322-0840**Hannah Cattle Company - Matt Hannah**

Mocksville, NC

25 miles northeast of Statesville, NC



<b>BLK/BWF</b>	90%	<b>#1</b>	90%	<b>FRAME:</b> Medium 95%
<b>CH-X</b>	5 hd.	<b>#1<sup>1/2</sup></b>	10%	Large 5%
<b>RED</b>	3 hd.	<b>#2</b>		
<b>RWF</b>				<b>FLESH:</b> Medium/grass
<b>Other</b>				

**Delivery Date:** March 11 - 15**Shrink:** 2%**Notice to load:** 48 hours**Slide:** \$6/cwt topside only**Conditions:** Hauled 10 miles, weighed on the truck**Nutrition:** 8-10# of a high-fiber commodity feed with access to mineral, hay, and pasture.**Vaccinations:** Vista Once (1x), Vista 5 (1x), Cavalry 9 (2x)**Implants:** Revalor (1x)**Dewormer:** Safeguard (1x), Cydectin Inject. (1x)**Genetics:** Angus-X commercial.**Other:** Weaned 60+ days.
**PrimeVAC**  
 BY MERCK ANIMAL HEALTH
**Backgrounded, Weaned, BQA Certified**

A very good set of backgrounded, reputational steers. There are over 100 head to sort a load out of. They were brought in as 4-weights and have mainly been grazing grass with a little feed. They have been double vaccinated under a very good health program. They are carrying just a medium to medium-grass flesh and would work well on feed or grass.

**Lot 9035 STEERS 2 Loads ~150 head**

Price: \$ \_\_\_\_\_ Buyer # \_\_\_\_\_

**Base Weight:** 650 lbs. **Wt Stop:** 675 lbs. **Variance:** 125 lbs.**Contractor:** Marcus Harward 704-322-0840**Donald Chriscoe Farm**

Asheboro, NC

40 miles south of Greensboro, NC



<b>BLK/BWF</b>	92%	<b>#1</b>	95%	<b>FRAME:</b> Medium
<b>CH-X</b>	4%	<b>#1<sup>1/2</sup></b>	5%	
<b>RED</b>	4%	<b>#2</b>		
<b>RWF</b>				<b>FLESH:</b> Medium
<b>Other</b>				

**Delivery Date:** March 14 - 20**Shrink:** 2%**Notice to load:** 24 - 48 hours**Slide:** \$6/cwt topside only**Conditions:** Weighed on the ground on Certified Scales.**Nutrition:** Haylage and DDG TMR with access to mineral, hay, and some pasture.**Vaccinations:** Bovi-Shield Gold 5 (2x), Vision 7 20/20 (1x), Nuplura (1x), Occuguard Pinkeye**Implants:** None**Dewormer:** Ivomec Inject (2x)**Genetics:** Angus-X commercial. Sired by Angus and SimAngus bulls.**Other:** Weaned 90+ days. Bunk broke, broke to waters.**Backgrounded, Weaned, BQA Certified**

A very good set of reputational steers from Donald Chriscoe. They have been weaned for over 90 days, are bunk broke, broke to Ritchie waters, and under a good health program. They were purchased from local producers, mainly using high-quality Angus bulls on Angus-X cows. There will be 2 loads of steers weighing 650 lbs.



*Cattle that are picked up after the stated delivery dates will be subject to a 3# per day increase on the base weight and any weight stops for each day late after the last stated delivery date.*

**Lot 9036 STEERS 2 Loads ~130 head**

Price: \$ \_\_\_\_\_ Buyer # \_\_\_\_\_

**Base Weight:** 750 lbs. **Wt Stop:** 775 lbs. **Variance:** 125 lbs.**Contractor:** Marcus Harward 704-322-0840**Donald Chriscoe Farm**

Asheboro, NC

40 miles south of Greensboro, NC



<b>BLK/BWF</b>	92%	<b>#1</b>	95%	<b>FRAME:</b> Medium
<b>CH-X</b>	4%	<b>#1<sup>1/2</sup></b>	5%	
<b>RED</b>	4%	<b>#2</b>		<b>FLESH:</b> Medium
<b>RWF</b>				
<b>Other</b>				

**Delivery Date:** ASAP by March 15**Shrink:** 2%**Notice to load:** 24 - 48 hours**Slide:** \$5/cwt topside only**Conditions:** Weighed on the ground on Certified Scales.**Nutrition:** Haylage and DDG TMR with access to mineral, hay, and some pasture.**Vaccinations:** Bovi-Shield Gold 5 (2x), Vision 7 20/20 (1x), Nuplura (1x), Occuguard Pinkeye**Implants:** None**Dewormer:** Ivomec Inject (2x)**Genetics:** Angus-X commercial. Sired by Angus and SimAngus bulls.**Other:** Yearlings weaned 100+ days. Bunk broke, broke to waters.**Backgrounded, Weaned, BQA Certified**

Another fancy set of reputational steers from Donald Chriscoe. They have been weaned for over 100 days, are bunk broke, broke to Ritchie waters, and under a good health program. They were purchased from local producers, mainly using high-quality Angus bulls on Angus-X cows. There will be 2 loads of steers weighing 750 lbs.

**Lot 9037 STEERS 1 Load ~63 head**

Price: \$ \_\_\_\_\_ Buyer # \_\_\_\_\_

**Base Weight:** 775 lbs. **Wt Stop:** 810 lbs. **Variance:** 200 lbs.**Contractor:** Marcus Harward 704-322-0840**Circle T Farm**

Asheboro, NC

40 miles south of Greensboro, NC



<b>BLK/BWF</b>	96%	<b>#1</b>	95%	<b>FRAME:</b> Medium
<b>CH-X</b>	2%	<b>#1<sup>1/2</sup></b>	5%	
<b>RED</b>	2%	<b>#2</b>		<b>FLESH:</b> Medium
<b>RWF</b>				
<b>Other</b>				

**Delivery Date:** ASAP by March 15**Shrink:** 1%**Notice to load:** 48 hours**Slide:** \$5/cwt topside only**Conditions:** Hauled 10 miles, weighed on ground scales**Nutrition:** TMR of corn silage, gluten, and ground corn with pasture, minerals, and hay.**Vaccinations:** Bovi-Shield Gold 5 (2x), Ultrabac 7 (2x)**Implants:** None**Dewormer:** LongRange**Genetics:** Sired by Angus bulls out of Angus-X cows. Angus-based with 10-20% continental.**Other:** Yearlings weaned 120+ days. Bunk broke.

allNATURAL

**Home-Raised, All-Natural, Backgrounded, Weaned, BQA Certified**

A good set of home-raised, Angus-based steers. Steers are bunk broke, double vaccinated, and have been under a good management program. They were born Spring of 2018 and weaned November 1. They are a good set of stout, growthy steers that are ready to go to feed. They also qualify as all-natural.

**Lot 9038 STEERS 1 Load ~62 head**

Price: \$ \_\_\_\_\_ Buyer # \_\_\_\_\_

**Base Weight:** 800 lbs. **Wt Stop:** 835 lbs. **Variance:** 125 lbs.**Contractor:** Marcus Harward 704-322-0840**Rocking H Cattle Company**

Gold Hill, NC

40 miles northwest of Charlotte, NC



<b>BLK/BWF</b>	94%	<b>#1</b>	100%	<b>FRAME:</b> Medium
<b>CH-X</b>	4%	<b>#1<sup>1/2</sup></b>		
<b>RED</b>	2%	<b>#2</b>		
<b>RWF</b>				<b>FLESH:</b> Medium
<b>Other</b>				

**Delivery Date:** March 18 - 22**Shrink:** 2%**Notice to load:** 48 hours**Slide:** \$5/cwt topside only**Conditions:** Hauled 5 miles, weighed on the truck**Nutrition:** TMR with pasture, minerals, and hay.**Vaccinations:** Vista Once (1x), Vista 5 (1x), Vision 7 w/somnus (2x)**Implants:** None**Dewormer:** LongRange**Genetics:** Sired by Angus and SimAngus bulls out of Angus-X cows. Angus-based with ~25% continental.**Other:** Yearlings weaned 100+ days. Bunk broke, broke to waters.PrimeVAC<sup>™</sup>  
BY MERCK ANIMAL HEALTH

allNATURAL

**Home-Raised, All-Natural, Backgrounded, Weaned, BQA Certified**

A good set of home-raised, all-natural, Angus-based steers. Steers are Angus-based with 25% continental or less. Many are sired by EBS Farms genetics and out of Angus-continental cross cows. They have been weaned for well over 100 days. Cattle are independently GAP 4 Certified and the certificate can transfer with the cattle.

**Lot 9039 STEERS 1 Load 60 head**

Price: \$ \_\_\_\_\_ Buyer # \_\_\_\_\_

**Base Weight:** 800 lbs. **Wt Stop:** 825 lbs. **Variance:** 150 lbs.**Contractor:** Marcus Harward 704-322-0840**O'Neill Cattle Company LLC**

Kenansville, NC

20 miles east of Clinton, NC • 10 miles east of I-40



<b>BLK/BWF</b>	100%	<b>#1</b>	90%	<b>FRAME:</b> Medium
<b>CH-X</b>		<b>#1<sup>1/2</sup></b>	10%	
<b>RED</b>		<b>#2</b>		
<b>RWF</b>				<b>FLESH:</b> Medium
<b>Other</b>				

**Delivery Date:** March 25 - 30**Shrink:** None**Notice to load:** 48 hours**Slide:** \$5/cwt topside only**Conditions:** Hauled 25 miles, weighed on the ground.**Nutrition:** Grazing rye grass and rye/turnip mix forage for the last 100+ days with free choice minerals.**Vaccinations:** Bovi-Shield Gold One Shot (1x), Bovi-Shield Gold 5 (1x), Ultrabac 7 (2x)**Implants:** None**Dewormer:** Dectomax Inject (1x); Ivermectin Pour-On (1x)**Genetics:** Angus-X commercial. Sired by Angus bulls.**Other:** Yearlings weaned 180+ days. Bunk broke at weaning, broke to waters.

SelectVAC

**Backgrounded, Weaned, BQA Certified**

A very good set of backgrounded, grass-flesh steers. Steers were purchased as 5-weights and stockered on annual forage over the winter, gaining an average of 2 lbs/day on just forage. These steers have had no health issues over the winter and are extremely calm and docile. They are ready to go to feed and have the growth and frame to finish well.

*Cattle that are picked up after the stated delivery dates will be subject to a 3# per day increase on the base weight and any weight stops for each day late after the last stated delivery date.*

**Lot 9040 STEERS 2 Loads ~125 head**

Price: \$ \_\_\_\_\_ Buyer # \_\_\_\_\_

**Base Weight:** 800 lbs. **Wt Stop:** 825 lbs. **Variance:** 125 lbs.**Contractor:** Marcus Harward 704-322-0840**Donald Chriscoe Farm**

Asheboro, NC

40 miles south of Greensboro, NC



<b>BLK/BWF</b>	92%	<b>#1</b>	95%	<b>FRAME:</b> Medium
<b>CH-X</b>	4%	<b>#1<sup>1/2</sup></b>	5%	
<b>RED</b>	4%	<b>#2</b>		<b>FLESH:</b> Medium
<b>RWF</b>				
<b>Other</b>				

**Delivery Date:** ASAP by March 15**Shrink:** 2%**Notice to load:** 24 - 48 hours**Slide:** \$5/cwt topside only**Conditions:** Weighed on the ground on Certified Scales.**Nutrition:** Haylage and DDG TMR with access to mineral, hay, and some pasture.**Vaccinations:** Bovi-Shield Gold 5 (2x), Vision 7 20/20 (1x), Nuplura (1x), Occuguard Pinkeye**Implants:** None**Dewormer:** Ivomec Inject (2x)**Genetics:** Angus-X commercial. Sired by Angus and SimAngus bulls.**Other:** Yearlings weaned 120+ days. Bunk broke, broke to waters.**Backgrounded, Weaned, BQA Certified**

Another fancy set of reputational steers from Donald Chriscoe. They have been weaned for over 120 days, are bunk broke, broke to Ritchie waters, and under a good health program. They were purchased from local producers, mainly using high-quality Angus bulls on Angus-X cows. There will be 2 loads of steers weighing 800 lbs.

**Lot 9041 STEERS 2 Loads ~115 head**

Price: \$ \_\_\_\_\_ Buyer # \_\_\_\_\_

**Base Weight:** 850 lbs. **Wt Stop:** 875 lbs. **Variance:** 125 lbs.**Contractor:** Marcus Harward 704-322-0840**Donald Chriscoe Farm**

Asheboro, NC

40 miles south of Greensboro, NC



<b>BLK/BWF</b>	92%	<b>#1</b>	95%	<b>FRAME:</b> Medium
<b>CH-X</b>	4%	<b>#1<sup>1/2</sup></b>	5%	
<b>RED</b>	4%	<b>#2</b>		<b>FLESH:</b> Medium
<b>RWF</b>				
<b>Other</b>				

**Delivery Date:** ASAP by March 15**Shrink:** 2%**Notice to load:** 24 - 48 hours**Slide:** \$5/cwt topside only**Conditions:** Weighed on the ground on Certified Scales.**Nutrition:** Haylage and DDG TMR with access to mineral, hay, and some pasture.**Vaccinations:** Bovi-Shield Gold 5 (2x), Vision 7 20/20 (1x), Nuplura (1x), Occuguard Pinkeye**Implants:** None**Dewormer:** Ivomec Inject (2x)**Genetics:** Angus-X commercial. Sired by Angus and SimAngus bulls.**Other:** Yearlings weaned 120+ days. Bunk broke, broke to waters.**Backgrounded, Weaned, BQA Certified**

A fancy set of reputational steers from Donald Chriscoe. They have been weaned for over 120 days, are bunk broke, broke to Ritchie waters, and under a good health program. They were purchased from local producers, mainly using high-quality Angus bulls on Angus-X cows. There will be 2 loads of steers weighing 850 lbs.

**Lot 9042 HEIFERS 1 Load ~90 head**

Price: \$ \_\_\_\_\_ Buyer # \_\_\_\_\_

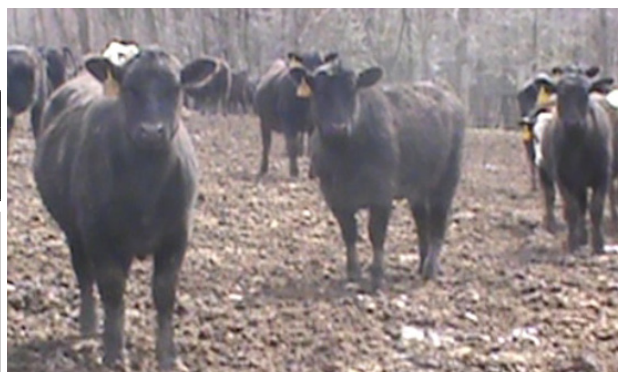
**Base Weight:** 550 lbs. **Wt Stop:** 575 lbs. **Variance:** 125 lbs.**Contractor:** Marcus Harward 704-322-0840**Donald Chriscoe Farm**

Asheboro, NC

40 miles south of Greensboro, NC



<b>BLK/BWF</b>	92%	<b>#1</b>	95%	<b>FRAME:</b> Medium
<b>CH-X</b>	4%	<b>#1<sup>1/2</sup></b>	5%	
<b>RED</b>	4%	<b>#2</b>		<b>FLESH:</b> Medium
<b>RWF</b>				
<b>Other</b>				

**Delivery Date:** March 14 - 20**Shrink:** 2%**Notice to load:** 24 - 48 hours**Slide:** \$6/cwt topside only**Conditions:** Weighed on the ground on Certified Scales.**Nutrition:** Haylage and DDG TMR with access to mineral, hay, and some pasture.**Vaccinations:** Bovi-Shield Gold 5 (2x), Vision 7 20/20 (1x), Nuplura (1x), Occuguard Pinkeye**Implants:** None**Dewormer:** Ivomec Inject (2x)**Genetics:** Angus-X commercial. Sired by Angus and SimAngus bulls.**Other:** Weaned 90+ days. Bunk broke, broke to waters.**Backgrounded, Weaned, Guaranteed Open, BQA Certified**

A very good set of reputational heifers from Donald Chriscoe. They have been weaned for over 90 days, are bunk broke, broke to Ritchie waters, and under a good health program. They were purchased from local producers, mainly using high-quality Angus bulls on Angus-X cows. Heifers have been palpated and are guaranteed open.

**Lot 9043 HEIFERS 2 Loads ~150 head**

Price: \$ \_\_\_\_\_ Buyer # \_\_\_\_\_

**Base Weight:** 650 lbs. **Wt Stop:** 675 lbs. **Variance:** 125 lbs.**Contractor:** Marcus Harward 704-322-0840**Donald Chriscoe Farm**

Asheboro, NC

40 miles south of Greensboro, NC



<b>BLK/BWF</b>	92%	<b>#1</b>	95%	<b>FRAME:</b> Medium
<b>CH-X</b>	4%	<b>#1<sup>1/2</sup></b>	5%	
<b>RED</b>	4%	<b>#2</b>		<b>FLESH:</b> Medium
<b>RWF</b>				
<b>Other</b>				

**Delivery Date:** March 14 - 20**Shrink:** 2%**Notice to load:** 24 - 48 hours**Slide:** \$6/cwt topside only**Conditions:** Weighed on the ground on Certified Scales.**Nutrition:** Haylage and DDG TMR with access to mineral, hay, and some pasture.**Vaccinations:** Bovi-Shield Gold 5 (2x), Vision 7 20/20 (1x), Nuplura (1x), Occuguard Pinkeye**Implants:** None**Dewormer:** Ivomec Inject (2x)**Genetics:** Angus-X commercial. Sired by Angus and SimAngus bulls.**Other:** Weaned 90+ days. Bunk broke, broke to waters.**Backgrounded, Weaned, Guaranteed Open, BQA Certified**

Another good set of reputational heifers selling as two loads from Donald Chriscoe. They have been weaned for over 90 days, are bunk broke, broke to Ritchie waters, and under a good health program. They were purchased from local producers, mainly using high-quality Angus bulls on Angus-X cows. Heifers have been palpated and are guaranteed open.

*Cattle that are picked up after the stated delivery dates will be subject to a 3# per day increase on the base weight and any weight stops for each day late after the last stated delivery date.*

**Lot 9044 HEIFERS 1 Load ~68 head**

Price: \$ \_\_\_\_\_ Buyer # \_\_\_\_\_

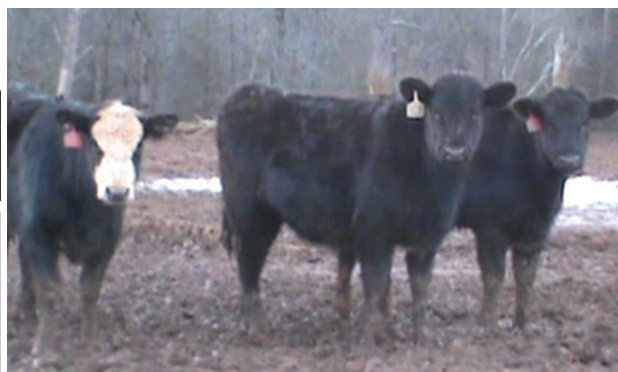
**Base Weight:** 725 lbs. **Wt Stop:** 760 lbs. **Variance:** 125 lbs.**Contractor:** Marcus Harward 704-322-0840**Rocking H Cattle Company**

Turnersburg, NC

10 miles north of Statesville, NC



<b>BLK/BWF</b>	92%	<b>#1</b>	100%	<b>FRAME:</b> Medium
<b>CH-X</b>	4%	<b>#1<sup>1/2</sup></b>		
<b>RED</b>	4%	<b>#2</b>		
<b>RWF</b>				<b>FLESH:</b> Medium
<b>Other</b>				

**Delivery Date:** March 18 - 22**Shrink:** 1%**Notice to load:** 48 hours**Slide:** \$5/cwt topside only**Conditions:** Hauled into the barn, weighed on the ground**Nutrition:** TMR with pasture, minerals, and hay.**Vaccinations:** Vista Once (1x), Vista 5 (1x), Vision 7 w/somnus (2x)**Implants:** None**Dewormer:** LongRange**Genetics:** Sired by Angus and SimAngus bulls out of Angus-X cows. Angus-based with ~25% continental.**Other:** Yearlings weaned 100+ days. Bunk broke, broke to waters.PrimeVAC<sup>™</sup>  
BY MERCK ANIMAL HEALTH

allNATURAL

**Home-Raised, All-Natural, Backgrounded, Weaned, Guaranteed Open, BQA Certified**

A good set of home-raised, all-natural, Angus-based heifers with 25% continental or less. Many are sired by EBS Farms genetics and out of Angus-continental cross cows. They have been weaned for well over 100 days. Heifers palpated by Rocky Creek Vets and guaranteed open. *Cattle are independently GAP 4 Certified and the certificate can transfer with the cattle.*

**Lot 9045 HEIFERS 2 Loads ~130 head**

Price: \$ \_\_\_\_\_ Buyer # \_\_\_\_\_

**Base Weight:** 750 lbs. **Wt Stop:** 775 lbs. **Variance:** 125 lbs.**Contractor:** Marcus Harward 704-322-0840**Donald Chriscoe Farm**

Asheboro, NC

40 miles south of Greensboro, NC



<b>BLK/BWF</b>	92%	<b>#1</b>	95%	<b>FRAME:</b> Medium
<b>CH-X</b>	4%	<b>#1<sup>1/2</sup></b>	5%	
<b>RED</b>	4%	<b>#2</b>		
<b>RWF</b>				<b>FLESH:</b> Medium
<b>Other</b>				

**Delivery Date:** ASAP by March 15**Shrink:** 2%**Notice to load:** 24 - 48 hours**Slide:** \$6/cwt topside only**Conditions:** Weighed on the ground on Certified Scales.**Nutrition:** Haylage and DDG TMR with access to mineral, hay, and some pasture.**Vaccinations:** Bovi-Shield Gold 5 (2x), Vision 7 20/20 (1x), Nuplura (1x), Occuguard Pinkeye**Implants:** None**Dewormer:** Ivomec Inject (2x)**Genetics:** Angus-X commercial. Sired by Angus and SimAngus bulls.**Other:** Yearlings weaned 120+ days. Bunk broke, broke to waters.**Backgrounded, Weaned, Guaranteed Open, BQA Certified**

Another good set of reputational heifers selling as two loads from Donald Chriscoe. They have been weaned for 120+ days, are bunk broke, broke to Ritchie waters, and under a good health program. They were purchased from local producers, mainly using high-quality Angus bulls on Angus-X cows. Heifers have been palpated and are guaranteed open.

**Lot 9046 STRS / HFRS 1 Load 70 head**

Price: \$ \_\_\_\_\_ Buyer # \_\_\_\_\_

33 Steers - Wt: 765 lbs. Wt Stop: 800 lbs. Variance: 150 lbs.  
 35 Heifers - Wt: 700 lbs. Wt Stop: 735 lbs. Variance: 150 lbs.  
 Contractor: Marcus Harward 704-322-0840

**Hill Creek Farms - John Rogers**

Hartsville, SC

20 miles northwest of Florence, SC off US Hwy 15

**Heifers sell \$.08 back.**

BLK/BWF	85%	#1	95%	FRAME: Medium
CH-X	8%	#1 <sup>1/2</sup>	5%	
RED	7%	#2		
RWF				FLESH: Medium
Other				

**Delivery Date:** March 7 - 15**Shrink:** 2%**Notice to load:** 48 hours**Slide:** \$5/cwt topside only**Conditions:** Hauled 10 miles, weighed on the truck**Nutrition:** TMR with pasture, minerals, and hay**Vaccinations:** Bovi-Shield Gold One Shot (1x), Bovi-Shield 5 (1x), Ultrabac 7 w/som (2x)**Implants:** None**Dewormer:** Safeguard (1x), LongRange (1x)**Genetics:** Predominantly Angus genetics, sired by Angus bulls and out of Angus-x cows.**Other:** Weaned 75+ days. Broke to waters and a hot wire fence.**Home-Raised, All-Natural, Backgrounded, Weaned, Heifers Guaranteed Open, BQA Certified**

A very nice set of home-raised, double vaccinated, steers and heifers. They are under a very good vaccination program and have complete records on all calves. They are broke to automatic waters and also to a hot wire fence. These cattle qualify as all-natural. An excellent load of cattle ready to go to feed or a grass program.

**Lot 9047 STRS / HFRS 1 Load 70 head**

Price: \$ \_\_\_\_\_ Buyer # \_\_\_\_\_

30 Steers - Wt: 770 lbs. Wt Stop: 800 lbs. Variance: 150 lbs.  
 40 Heifers - Wt: 720 lbs. Wt Stop: 750 lbs. Variance: 150 lbs.  
 Contractor: David McDannald 864-360-0481

**McDannald Cattle Company**

Fountain Inn, SC

20 miles southeast of Greenville, SC

**Heifers sell \$.08 back.**

BLK/BWF	63 hd.	#1	100%	FRAME: Medium
CH-X	4 hd.	#1 <sup>1/2</sup>		
RED	3 hd.	#2		
RWF				FLESH: Medium
Other				

**Delivery Date:** March 7 - 15**Shrink:** 2%**Notice to load:** 24 hours**Slide:** \$5/cwt topside only**Conditions:** Weighed on the ground**Nutrition:** 6-7# of 14% CPC Developer with free choice mineral, pasture, and hay.**Vaccinations:** Vista Once SQ (1x), Vista 5 SQ (1x), Vision 7 w/somnus (2x)**Implants:** None**Dewormer:** Safeguard (1x), Dectomax Inject. (1x)**Genetics:** Sired by Angus and SimAngus bulls out of Angus-X cows.**Other:** Yearlings weaned 100+ days. Bunk broke, broke to waters.**Home-Raised, All-Natural, Backgrounded, Weaned, Heifers Guaranteed Open, BQA Certified**

A very good set of all-natural calves that are sired by Angus and SimAngus bulls. They have been double vaccinated and weaned for over 100 days. They are bunk broke, getting a little feed each day. These cattle qualify as all-natural but are not GAP certified. A very good load of steers and heifers ready to go to feed.

*Cattle that are picked up after the stated delivery dates will be subject to a 3# per day increase on the base weight and any weight stops for each day late after the last stated delivery date.*

**Lot 9048 STRS / HFRS 1 Load ~65 head**

Price: \$ \_\_\_\_\_ Buyer # \_\_\_\_\_

33 Steers - Wt: 775 lbs. Wt Stop: 810 lbs. Variance: 150 lbs.

32 Heifers - Wt: 750 lbs. Wt Stop: 785 lbs. Variance: 150 lbs.

Contractor: Marcus Harward 704-322-0840

**Frank Howey Farms**

Mount Croghan, SC

15 miles southwest of Wadesboro, NC

*Heifers sell \$.08 back.***PrimeVAC**  
BY MERCK ANIMAL HEALTH**allNATURAL**

BLK/BWF	75%	#1	95%	FRAME: Medium
CH-X	10%	#1 <sup>1/2</sup>	5%	
RED	15%	#2		
RWF				FLESH: Medium
Other				

Delivery Date: ASAP by March 15

Shrink: None

Notice to load: 48 hours

Slide: \$5/cwt topside only

Conditions: Hauled 35+ miles, weighed on the ground

Nutrition: 10# of 14% CPC Developer with free choice mineral, pasture, and hay.

Vaccinations: Vista Once (1x), Vista 5 (1x), Vision 7 w/somnus (2x)

Implants: None

Dewormer: Safeguard (1x)

Genetics: Sired by Angus and Red Angus bulls, out of Angus-X (SimAngus, Charolais, Red Angus) cows.

Other: Yearlings weaned 100+ days.

**Home-Raised, All-Natural, Backgrounded, Weaned, BQA Certified**

A fancy set of home-raised, all-natural calves. Cattle were born February-March 2018, sired by high-performing Angus and Red Angus bulls. Cattle were weaned 60+ days ago and have been under a good herd health program.

*Calves qualify as all-natural and are GAP-4 Certified through Pineland Farms.***Lot 9049 STRS / HFRS 1 Load ~65 head**

Price: \$ \_\_\_\_\_ Buyer # \_\_\_\_\_

33 Steers - Wt: 775 lbs. Wt Stop: 810 lbs. Variance: 150 lbs.

32 Heifers - Wt: 750 lbs. Wt Stop: 785 lbs. Variance: 150 lbs.

Contractor: Marcus Harward 704-322-0840

**K Farms**

Burlington, NC

20 miles east of Greensboro, NC

*Heifers sell \$.08 back.***PrimeVAC**  
BY MERCK ANIMAL HEALTH**allNATURAL**

BLK/BWF	100%	#1	100%	FRAME: Medium
CH-X		#1 <sup>1/2</sup>		
RED		#2		
RWF				FLESH: Medium
Other				

Delivery Date: March 13 - 15

Shrink: 1%

Notice to load: 48 hours

Slide: \$5/cwt topside only

Conditions: Hauled 10 miles, weighed on the ground

Nutrition: 5-6# of commodity ration with free choice mineral, pasture, and hay.

Vaccinations: Bovi-Shield Gold One Shot (2x), Ultrabac 7 w/somnus (2x)

Implants: None

Dewormer: LongRange (1x), Dectomax (1x)

Genetics: Sired by Angus and SimAngus bulls out of Angus-X cows.

Other: Yearlings weaned 100+ days. Bunk broke, broke to waters.

**Home-Raised, All-Natural, Backgrounded, Weaned, Heifers Guaranteed Open, BQA Certified**

A very good set of all-natural calves that are sired by Angus and SimAngus bulls. They have been double vaccinated and weaned for over 100 days. They were born February - April 2018. There are 110 head to sort a load out of. A good split load of calves that are ready to go to feed.

**Lot 9050 STRS / HFRS 1 Load 66 head**

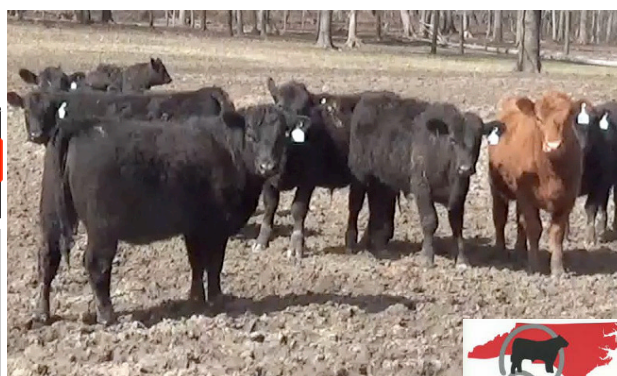
Price: \$ \_\_\_\_\_ Buyer # \_\_\_\_\_

36 Steers - Wt: 785 lbs. Wt Stop: 820 lbs. Variance: 300 lbs.  
 30 Heifers - Wt: 700 lbs. Wt Stop: 735 lbs. Variance: 300 lbs.  
 Contractor: Marcus Harward 704-322-0840

**Sandy Hill Farm - Don York**  
 Burlington, NC  
 20 miles east of Greensboro, NC

820  
WEIGHT  
STOP735  
WEIGHT  
STOP

BLK/BWF	88%	#1	95%	FRAME: Medium
CH-X	4-5 hd	#1 <sup>1/2</sup>	5%	
RED	3-4 hd	#2		FLESH: Medium
RWF				
Other				



Heifers sell \$.06 back.

SelectVAC

AllNATURAL

global animal  
PARTNERSHIP

Delivery Date: March 11 - 15

Shrink: 1%

Notice to load: 48 hours

Slide: \$5/cwt topside only

Conditions: Hauled 15 miles, weighed on the ground

Nutrition: 10# of 14% CPC Developer with free choice mineral, pasture, and hay.

Vaccinations: Inforce 3 (1x), Bovi-Shield One Shot (1x), Bovi-Shield Gold 5 (1x), Ultrabac 7 w/som (2x)

Implants: None

Dewormer: Dectomax (1x)

Genetics: 75% Angus, 25% Simmental. Sired by SimAngus bulls (SDS Alumni, TC Total 410, Entourage, Dual Focus sons). Angus cow lines are Impression, Prophet, and Connealy genetics.

Other: Yearlings weaned 60+ days. Broke to waters. Source &amp; Age Verified with EID tags.

**Home-Raised, All-Natural, Backgrounded, Weaned, Heifers Guaranteed Open, EID Tagged, BQA Certified**

A fancy set of home-raised, all-natural calves. Cattle were born January-March 2018, sired by high-performing SimAngus bulls. Cattle were weaned 60+ days ago and have been under a good herd health program. Cattle are very docile.  
 Cattle are independently GAP 4 Certified and the certificate can transfer with the cattle.

**Lot 9051 STRS / HFRS 1 Load 60 head**

Price: \$ \_\_\_\_\_ Buyer # \_\_\_\_\_

30 Steers - Wt: 835 lbs. Wt Stop: 870 lbs. Variance: 100 lbs.  
 30 Heifers - Wt: 850 lbs. Wt Stop: 885 lbs. Variance: 100 lbs.  
 Contractor: David McDannald 864-360-0481

**McDannald Cattle Company**  
 Fountain Inn, SC  
 20 miles southeast of Greenville, SC

870  
WEIGHT  
STOP885  
WEIGHT  
STOP

BLK/BWF	56 hd.	#1	100%	FRAME: Medium
CH-X	4 hd.	#1 <sup>1/2</sup>		
RED		#2		FLESH: Medium
RWF				
Other				



Heifers sell \$.08 back.

PrimeVAC  
BY MERCK ANIMAL HEALTH

AllNATURAL

global animal  
PARTNERSHIP

Delivery Date: March 7 - 15

Shrink: 2%

Notice to load: 24 hours

Slide: \$5/cwt topside only

Conditions: Weighed on the ground

Nutrition: 6-7# of 14% CPC Developer with free choice mineral, pasture, and hay.

Vaccinations: Vista Once SQ (1x), Vista 5 SQ (1x), Vision 7 w/somnus (2x)

Implants: None

Dewormer: Safeguard (1x), Dectomax Inject. (1x)

Genetics: Sired by Angus and SimAngus bulls out of Angus-X cows.

Other: Yearlings weaned 100+ days. Bunk broke, broke to waters.

**Home-Raised, All-Natural, Backgrounded, Weaned, Heifers Guaranteed Open, BQA Certified**

A fancy set of all-natural calves that are sired by Angus and SimAngus bulls. They have been double vaccinated and weaned for over 100 days. They are bunk broke, getting a little feed each day. A very good load of steers and heifers ready to go to feed. These cattle qualify as all-natural and are GAP-4 Certified through Pineland Farms.

Cattle that are picked up after the stated delivery dates will be subject to a 3# per day increase on the base weight and any weight stops for each day late after the last stated delivery date.



# **MARCH 21**

## **VALUE-ADDED BQA GRADED FEEDER CALF SALE**

***All calves weaned 45+ days and double vaccinated!***

**Stanly County Livestock Market • Norwood, NC**

**Sale time: 6:00 pm est.**

**Conference call available at sale time!**

### **Value-Added BQA Weaned Sales**

- Steers or heifer calves that are at least 400 lbs. No bulls are allowed.
- Steers must be properly castrated and healed.
- Calves must not have horns - either be polled or properly dehorned and healed.
- Producer must be BQA Certified. [www.bqa.org/certification/online-certification](http://www.bqa.org/certification/online-certification)
- Producer must submit the "BQA Sale Health Verification Form" on or before sale day (provided through Stanly County Livestock Market or the local extension office).

### **Vaccinations**

- Two doses of a Modified Live Respiratory vaccine including one with Pasteurella
- Two doses of a Clostridial/Blackleg vaccine (one with somnus)
- At least one round of parasite control with a recognized de-wormer

### **Other Conditions**

- Calves must be weaned for at least 45+ days.
- Heifers must be guaranteed open.
- Calves need to be tagged with a BQA sale ear tag (yellow tag) prior to sale day.

# 2019 Schedule

*All regular sales will be the first Wednesday of the month starting at 9:30 am est. (8:30 am cst.) unless noted with an asterisk (\*).*

April 3

May 8\*

June 5

July 10\*

August 7

September 4

October 2

November 6

December 4

**This sale will be broadcast live on the internet.**

***DVAuction***

***Broadcasting Real-Time Auctions***



28978 Misenheimer Rd • Richfield, NC 28137  
Office: 704-463-5828 • Marcus Harward: 704-322-0840

MACSvideoauction@gmail.com  
[www.MACSvideo.com](http://www.MACSvideo.com)